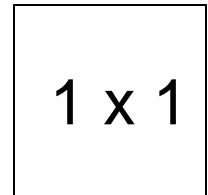


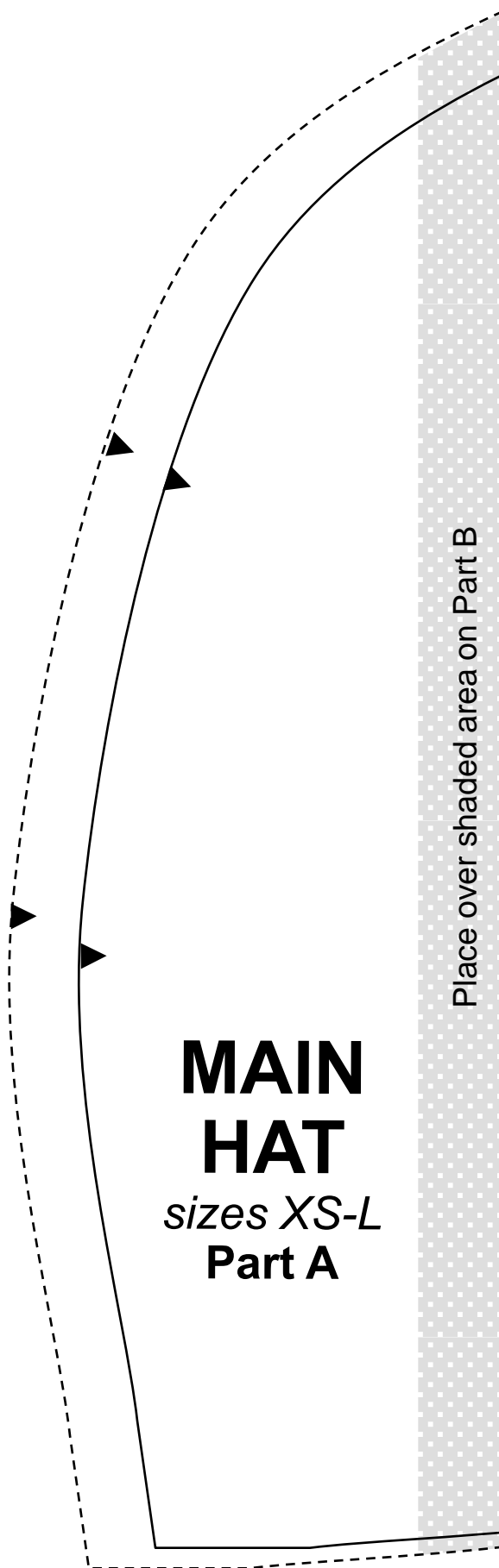
Unicorn Hat (with Narwhal Option)

Important note:

The pattern pieces are designed to be printed at 100%. Before printing the patterns, make sure that page scaling is set to none in Adobe Acrobat print window. To be sure that your patterns are going to print at the correct size, measure the box on the first pattern page. It should measure exactly 1 inch by 1 inch.



1 x 1



**MAIN
HAT**
sizes XS-L
Part A

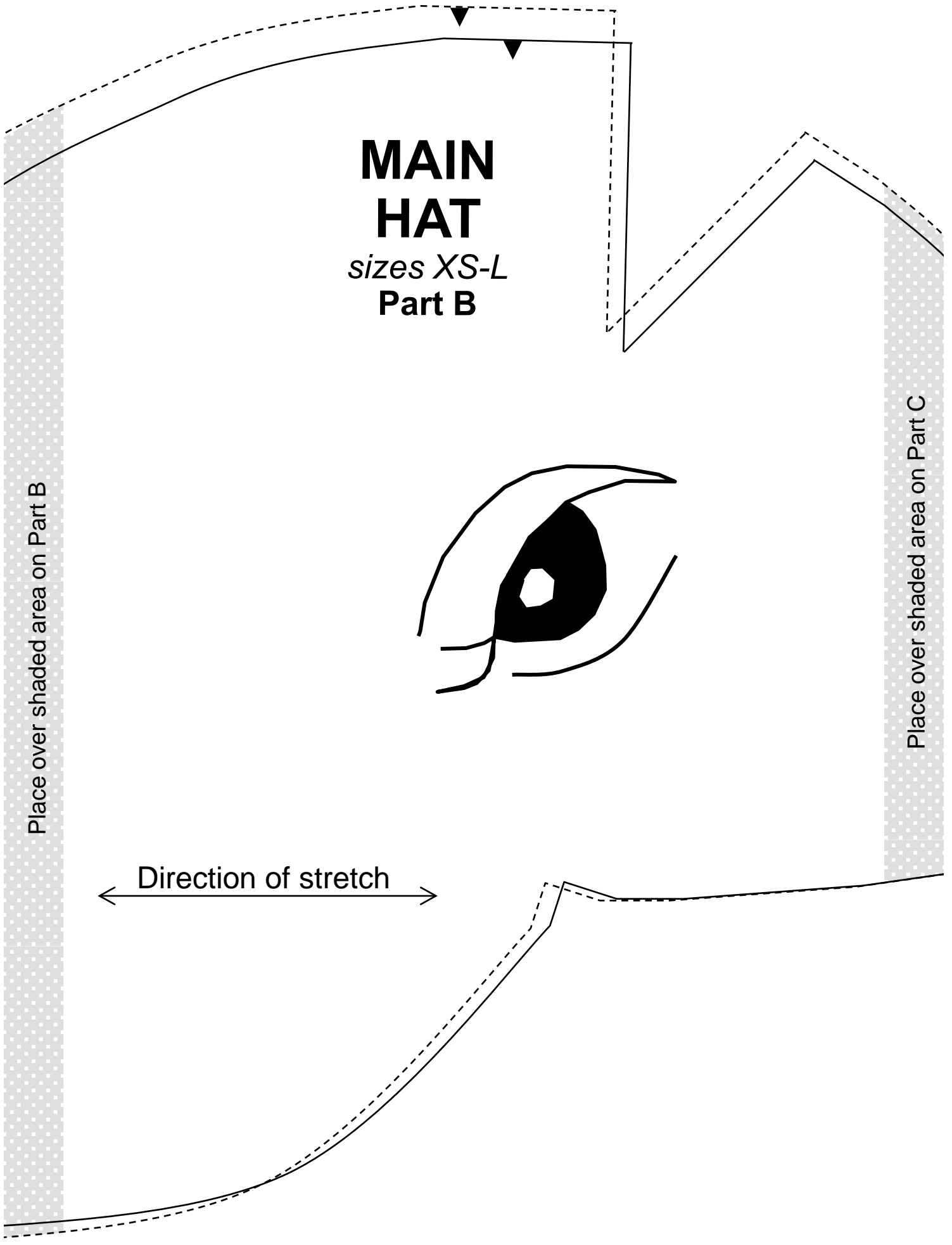
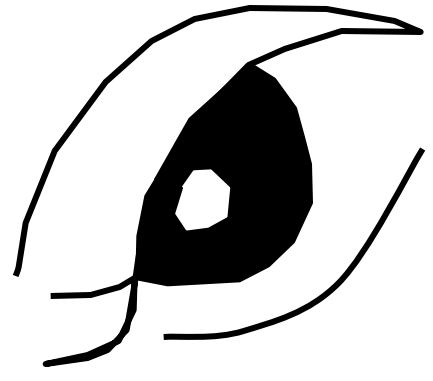
Place over shaded area on Part B

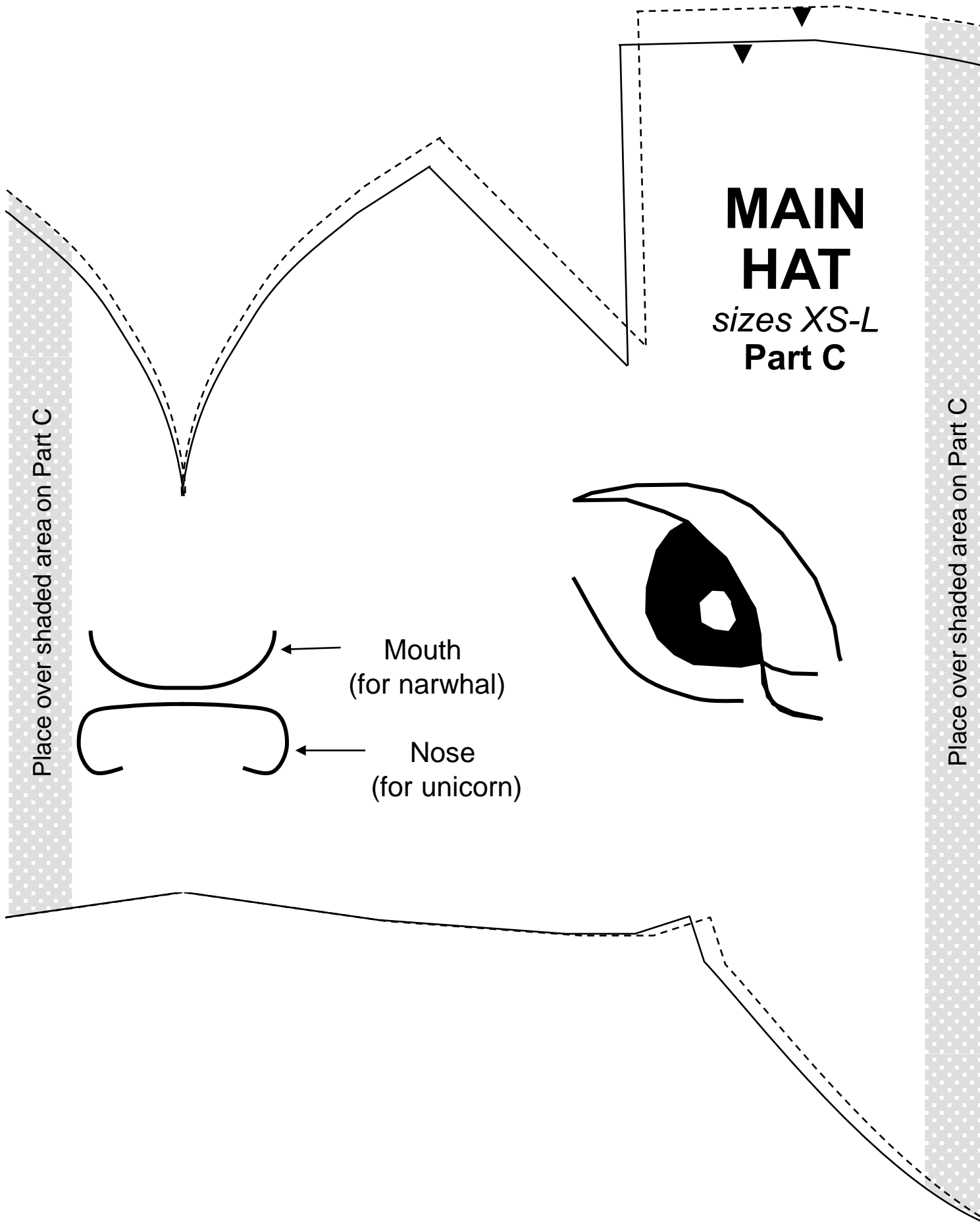
**MAIN
HAT**
sizes XS-L
Part B

Place over shaded area on Part B

Place over shaded area on Part C

← Direction of stretch →





**MAIN
HAT**
sizes XS-L
Part C

Place over shaded area on Part C

Place over shaded area on Part C

Mouth
(for narwhal)

Nose
(for unicorn)

Place over shaded area on Part C

Unicorn Hat

MAIN HAT

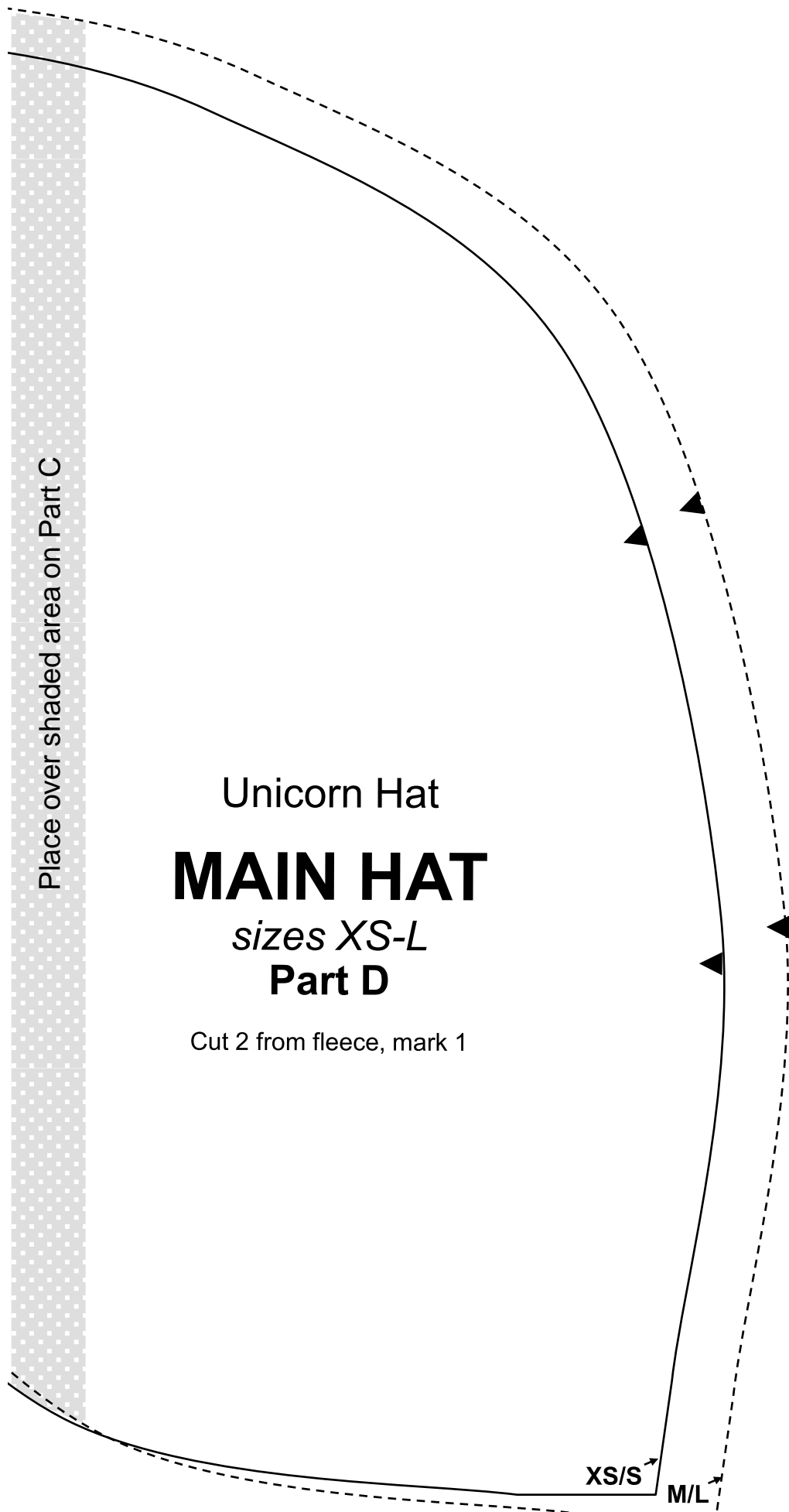
sizes XS-L

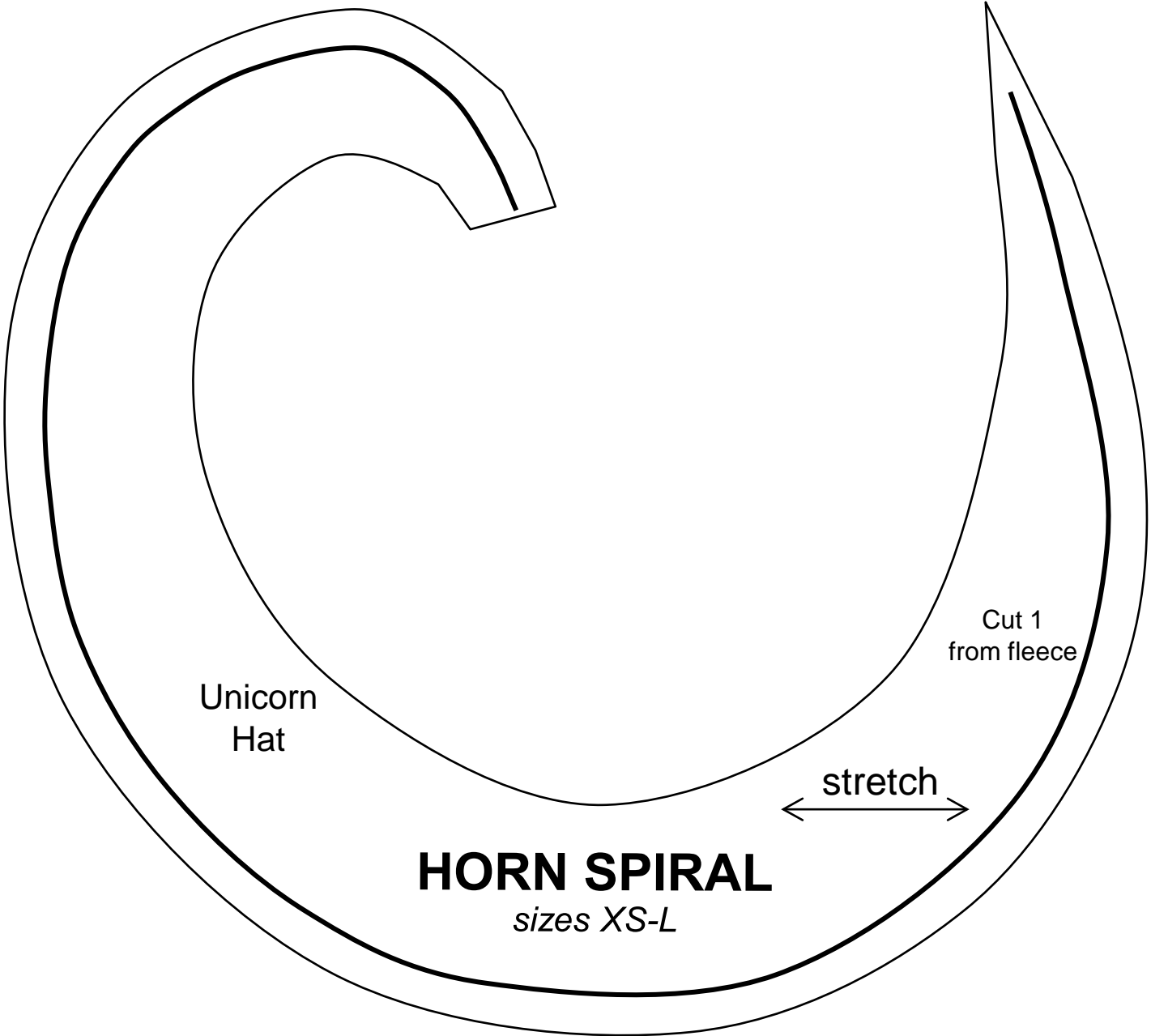
Part D

Cut 2 from fleece, mark 1

XS/S

M/L



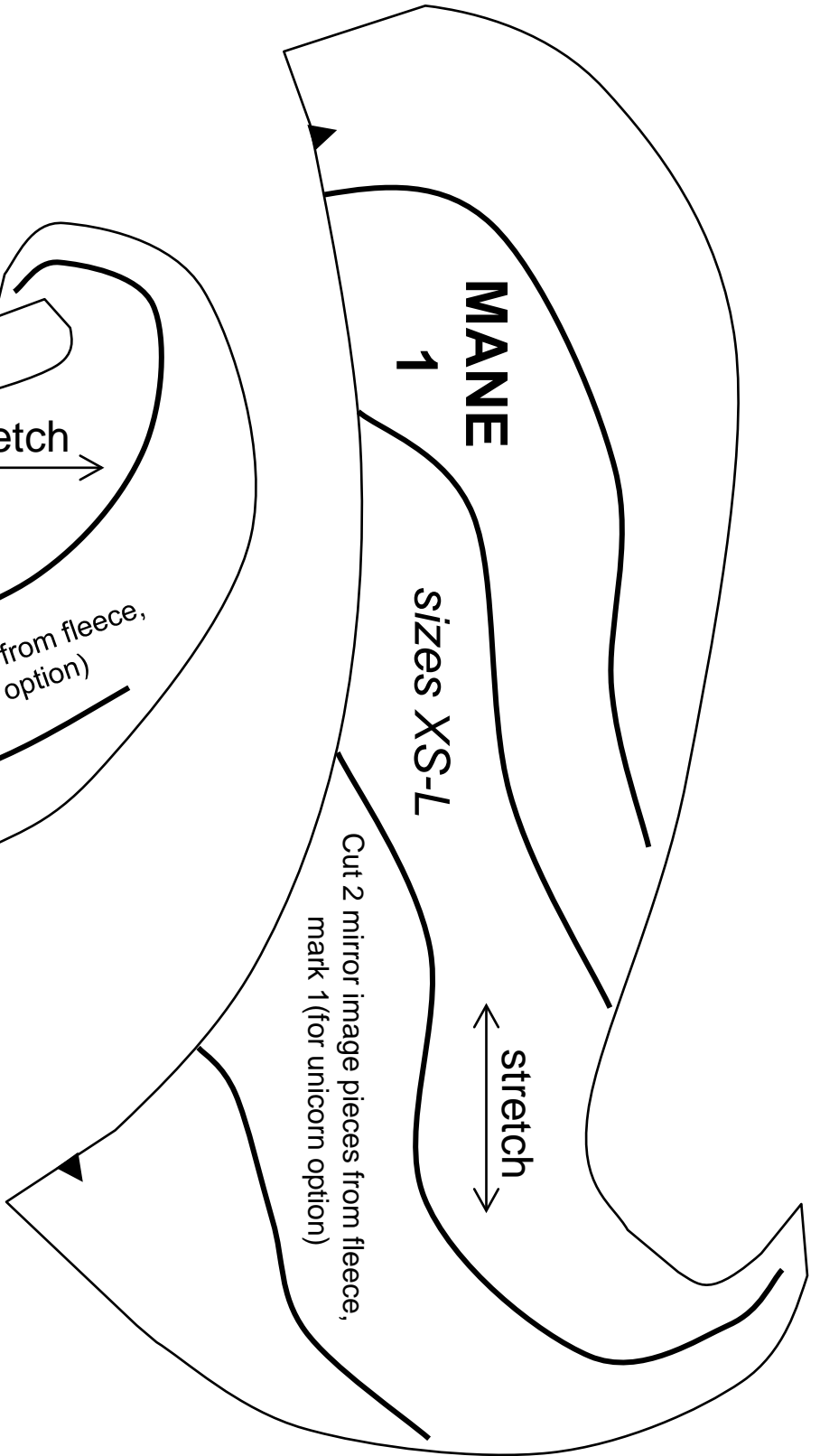
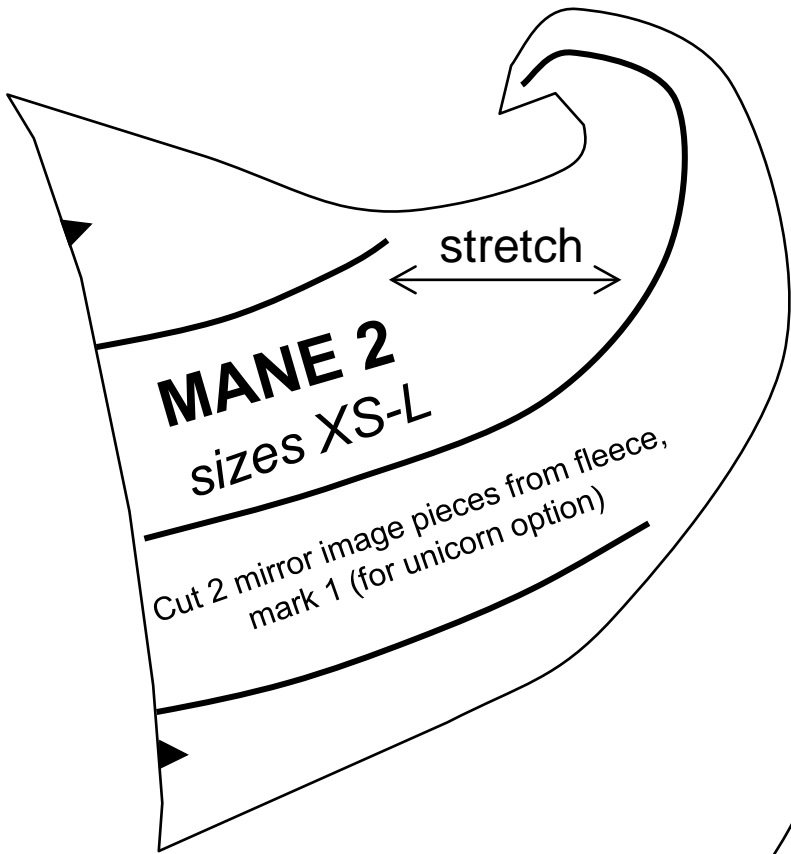


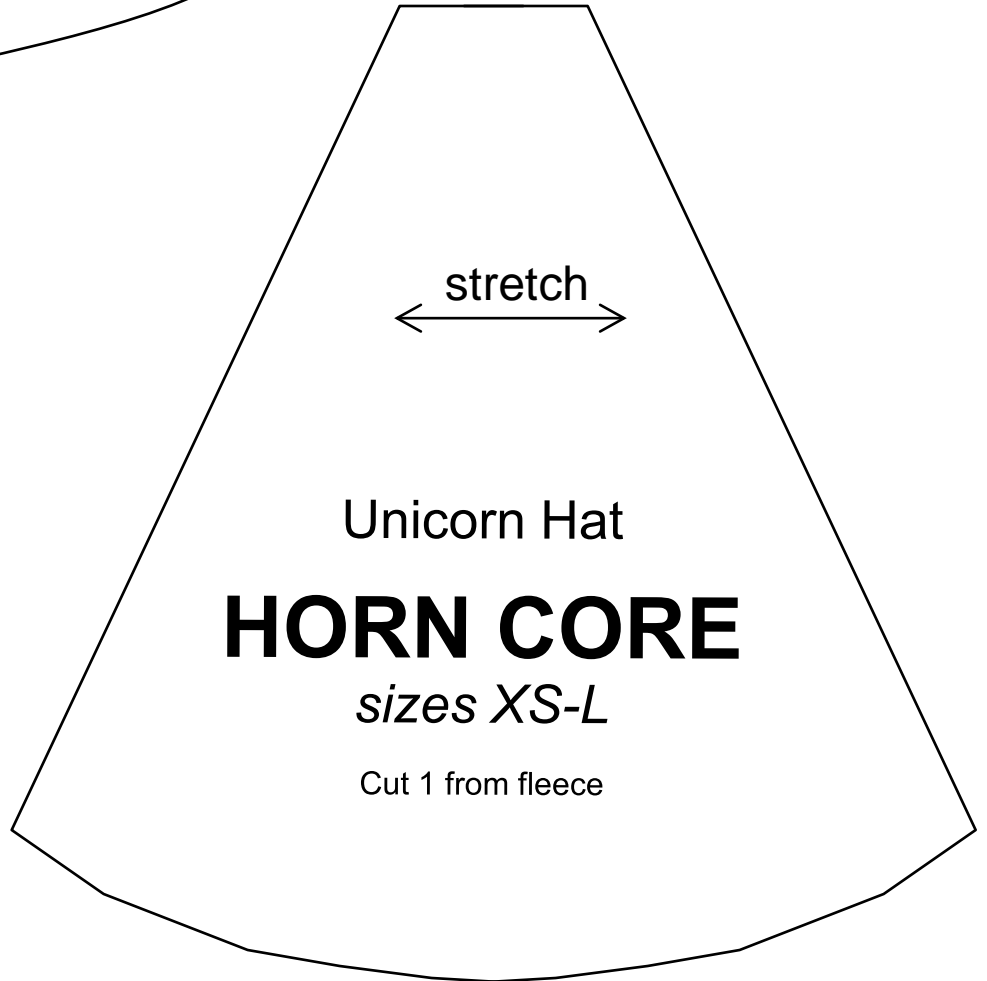
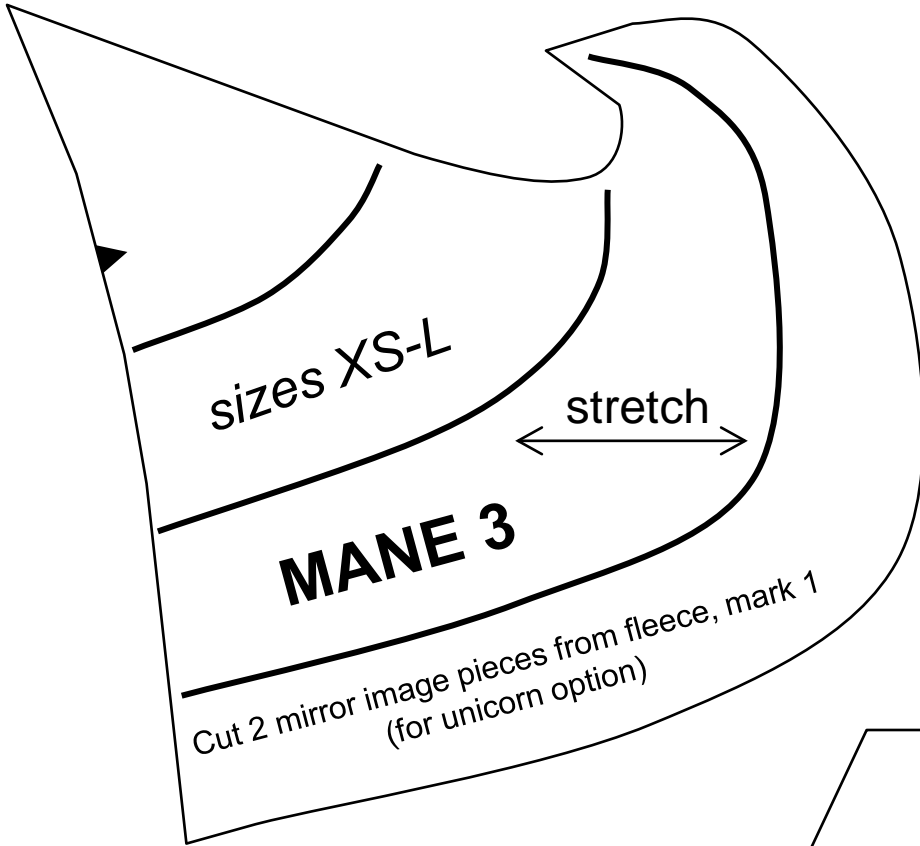
Unicorn
Hat

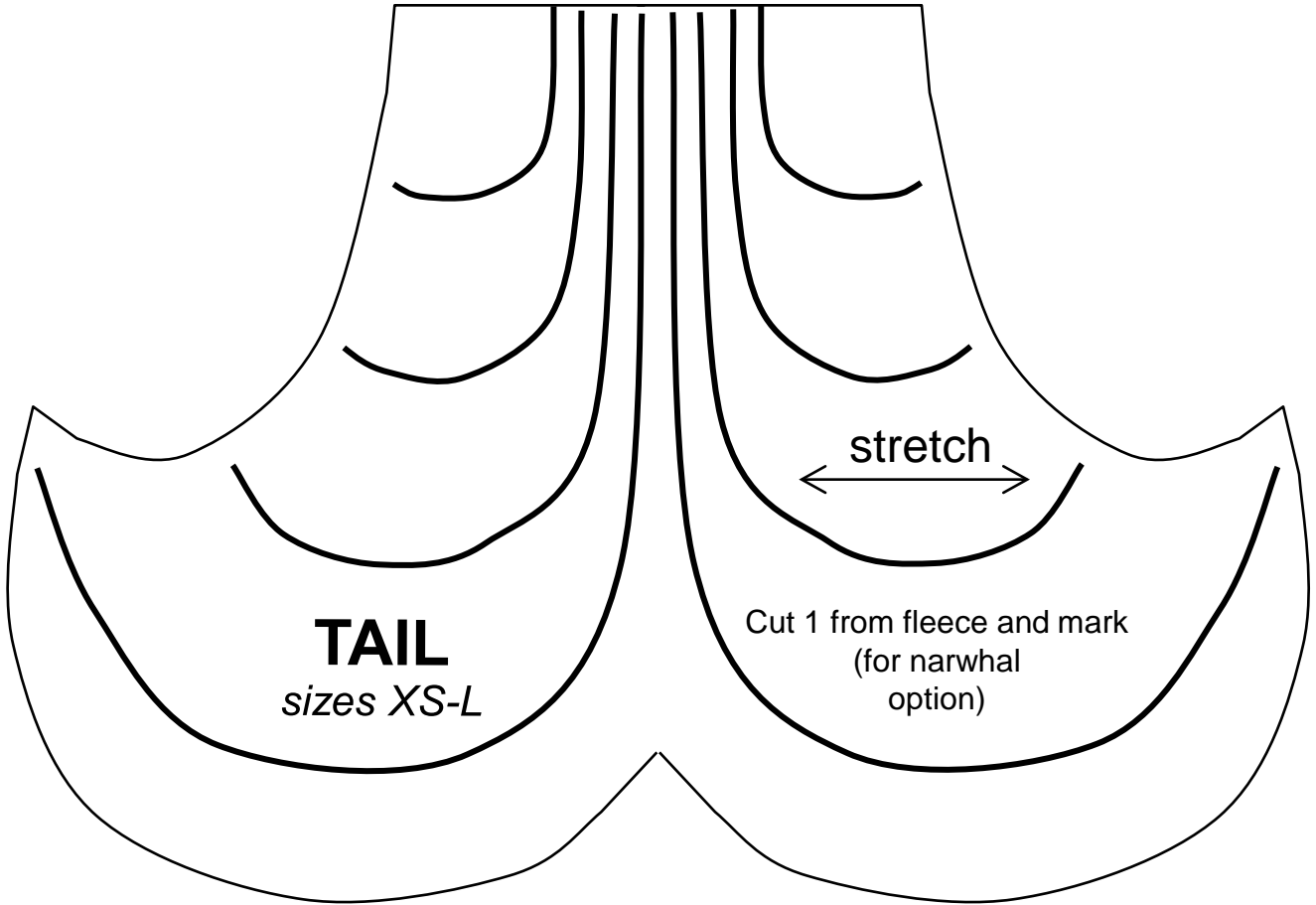
Cut 1
from fleece

stretch

HORN SPIRAL
sizes XS-L







TAIL
sizes XS-L

Cut 1 from fleece and mark
(for narwhal
option)

stretch