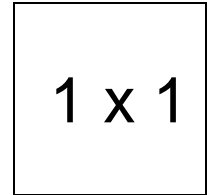


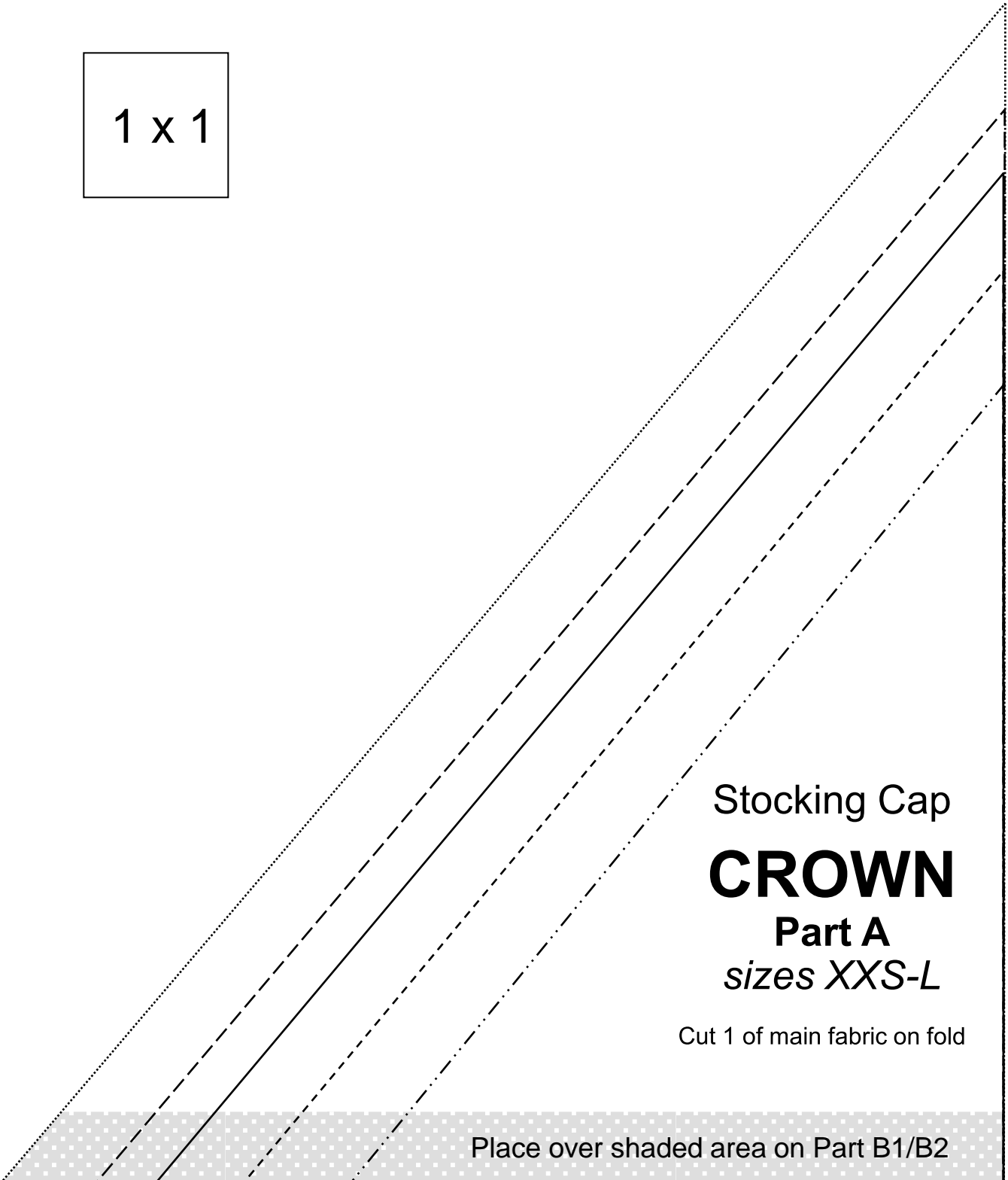
Stocking Cap

Important note:

The pattern pieces are designed to be printed at 100%. Before printing the patterns, make sure that page scaling is set to none in Adobe Acrobat print window. To be sure that your patterns are going to print at the correct size, measure the box on the first pattern page. It should measure exactly 1 inch by 1 inch.



1 x 1



Stocking Cap

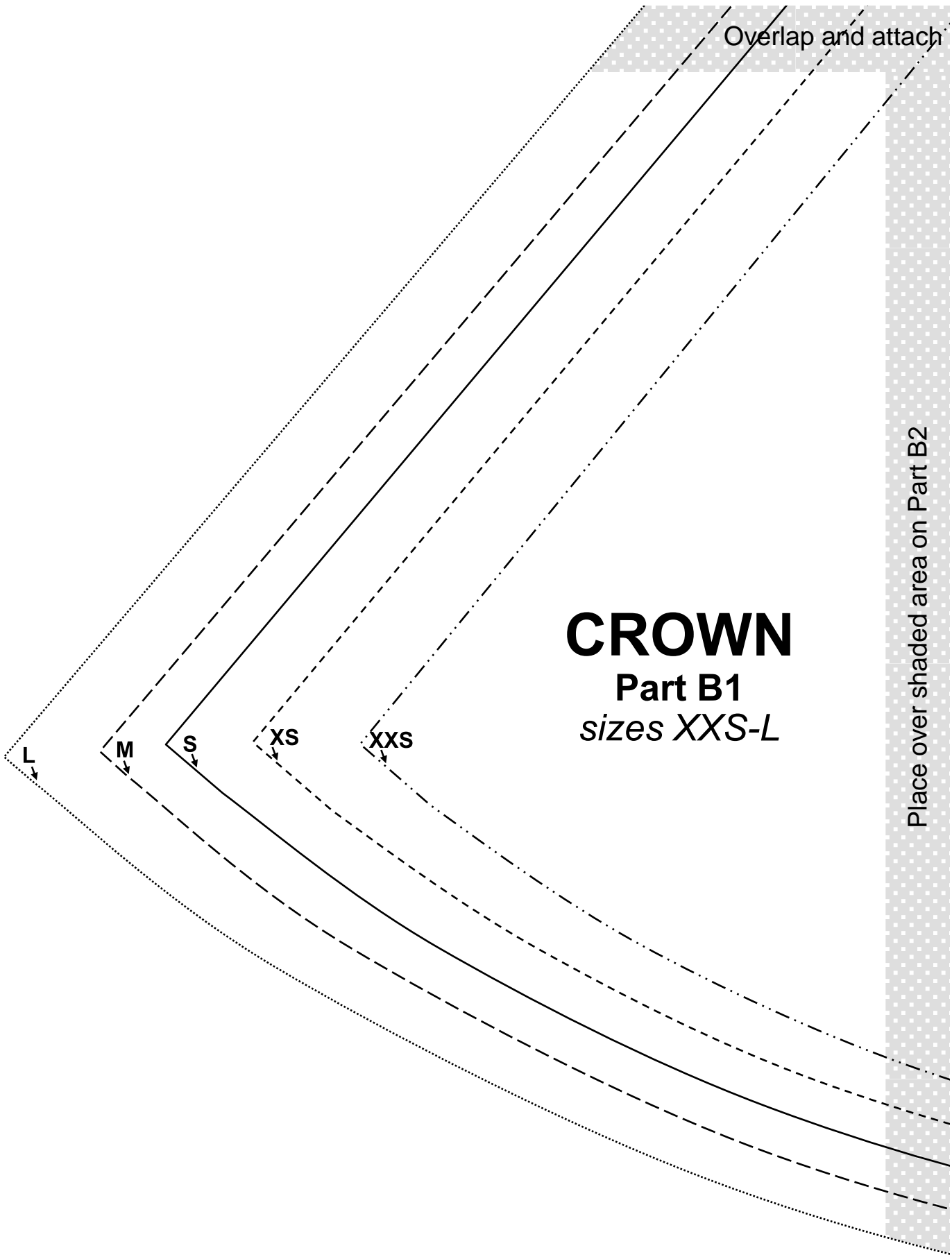
CROWN

Part A

sizes XXS-L

Cut 1 of main fabric on fold

Place over shaded area on Part B1/B2



Overlap and attach

CROWN
Part B1
sizes *XXS-L*

Place over shaded area on Part B2

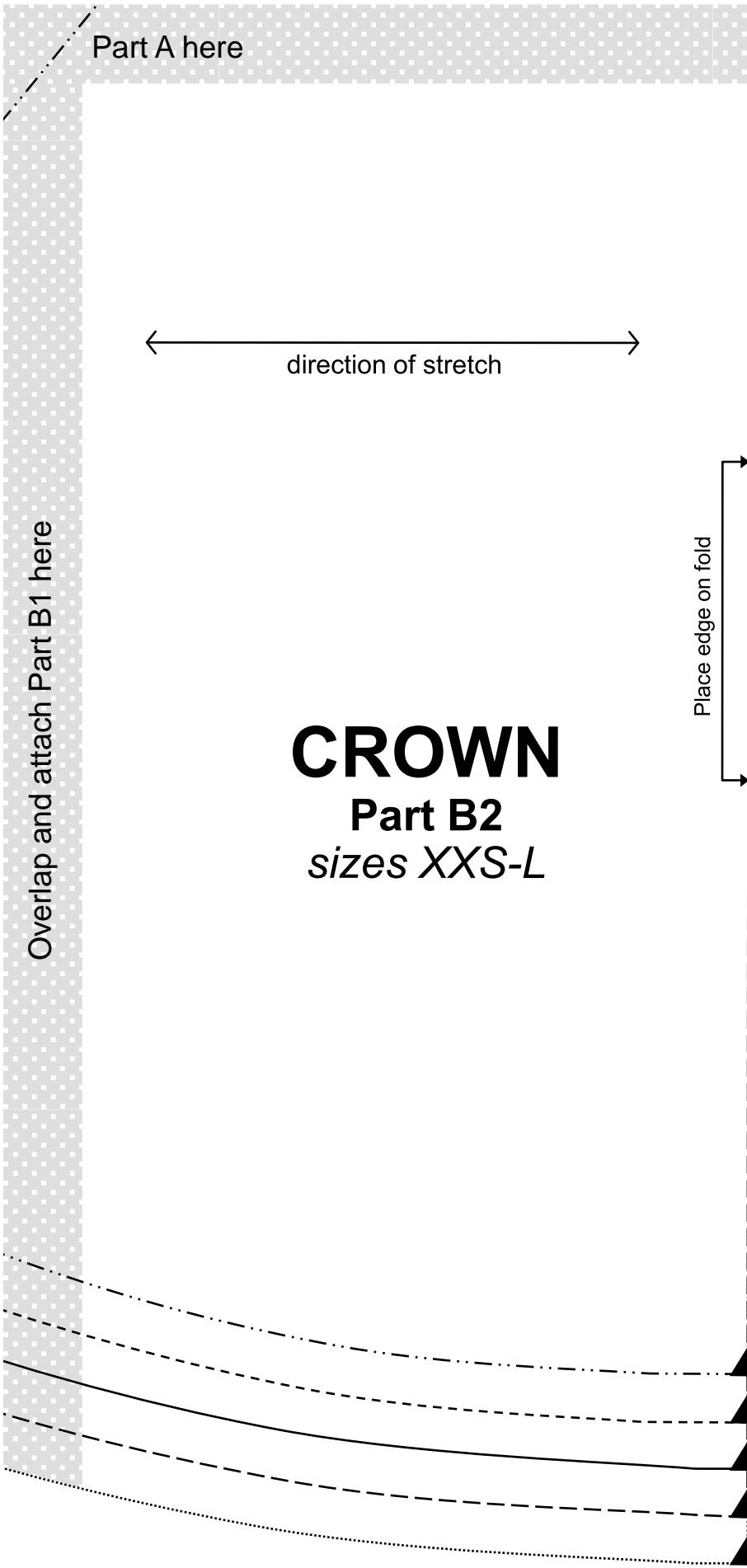
L

M

S

XS

XXS



Part A here

← direction of stretch →

Overlap and attach Part B1 here

Place edge on fold

CROWN
Part B2
sizes XXS-L

