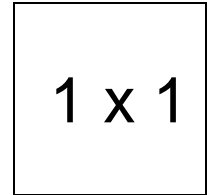


Raindrop Hat

Important note:

The pattern pieces are designed to be printed at 100%. Before printing the patterns, make sure that page scaling is set to none in Adobe Acrobat print window. To be sure that your patterns are going to print at the correct size, measure the box on the first pattern page. It should measure exactly 1 inch by 1 inch.



1 x 1

Raindrop Hat

CROWN

sizes *XXS-L*

grain line

Cut 5 of laminated cotton
Cut 5 of interfacing
Cut 5 of lining

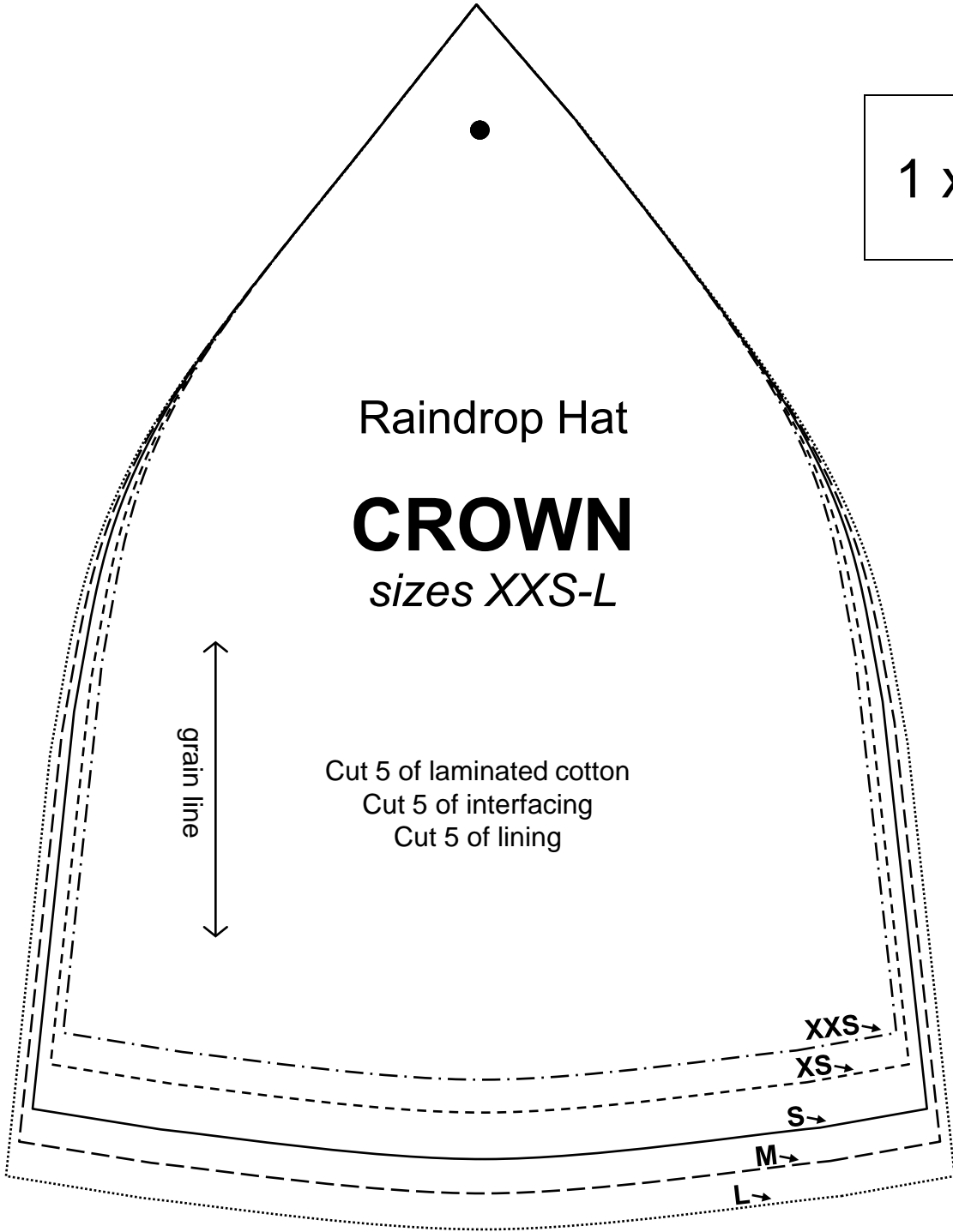
XXS →

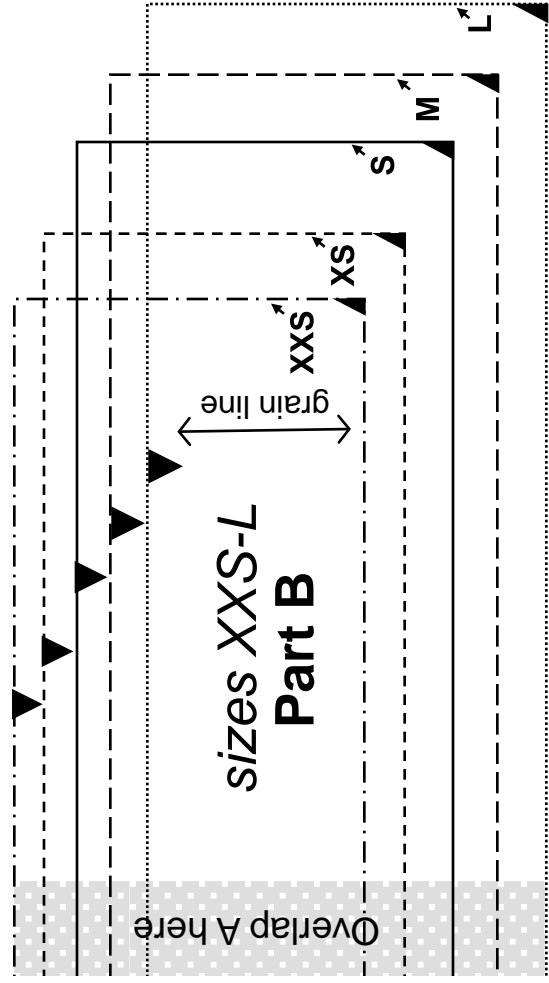
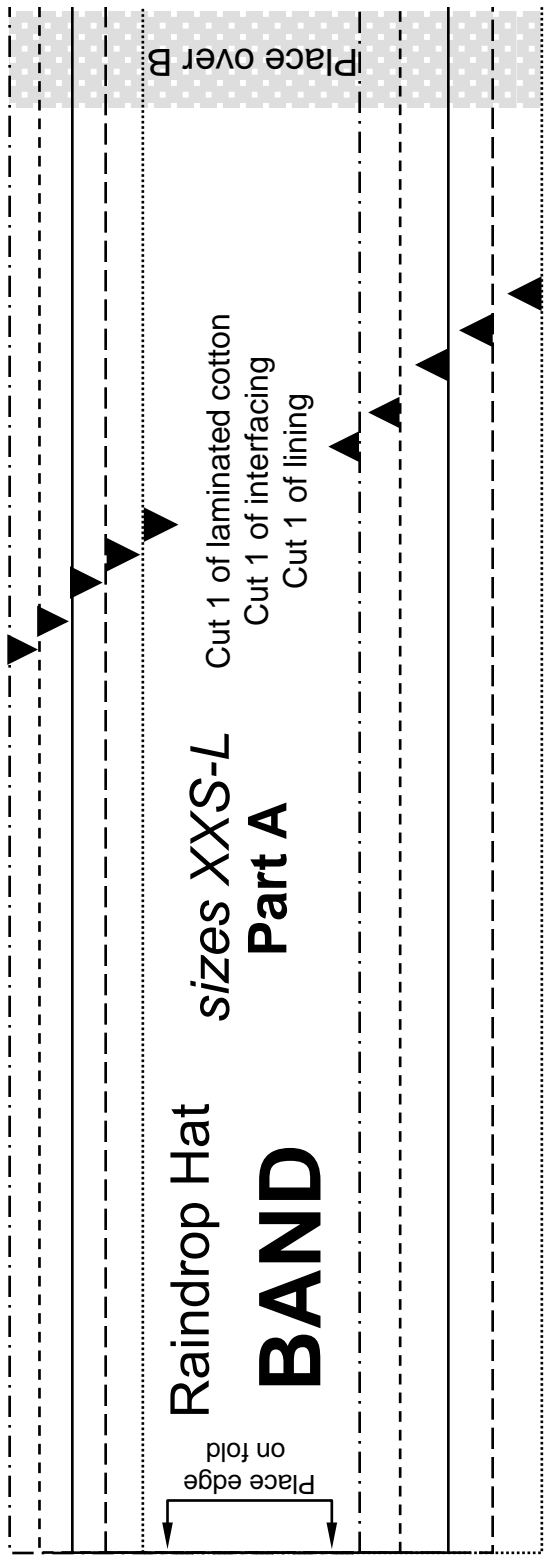
XS →

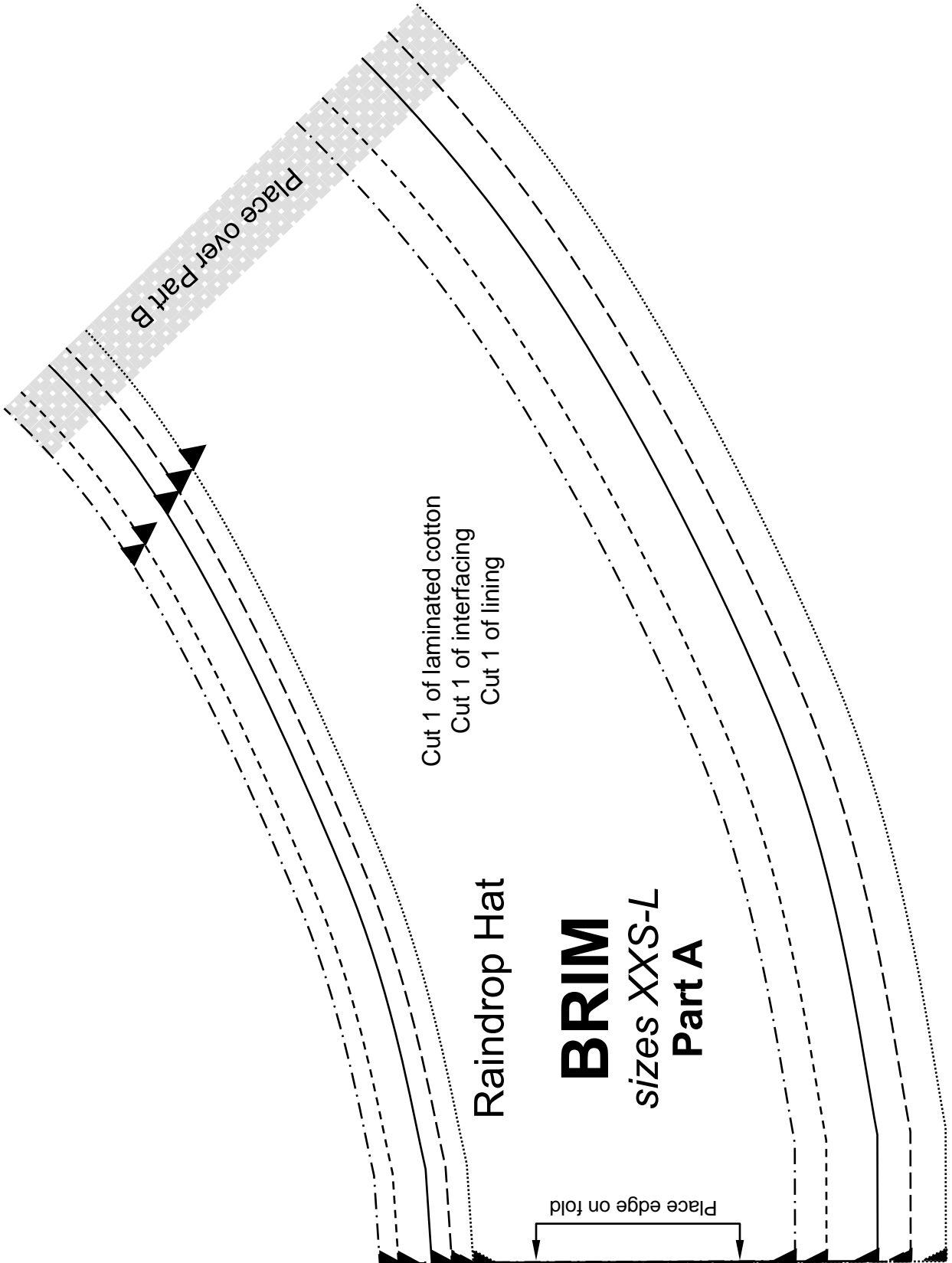
S →

M →

L →







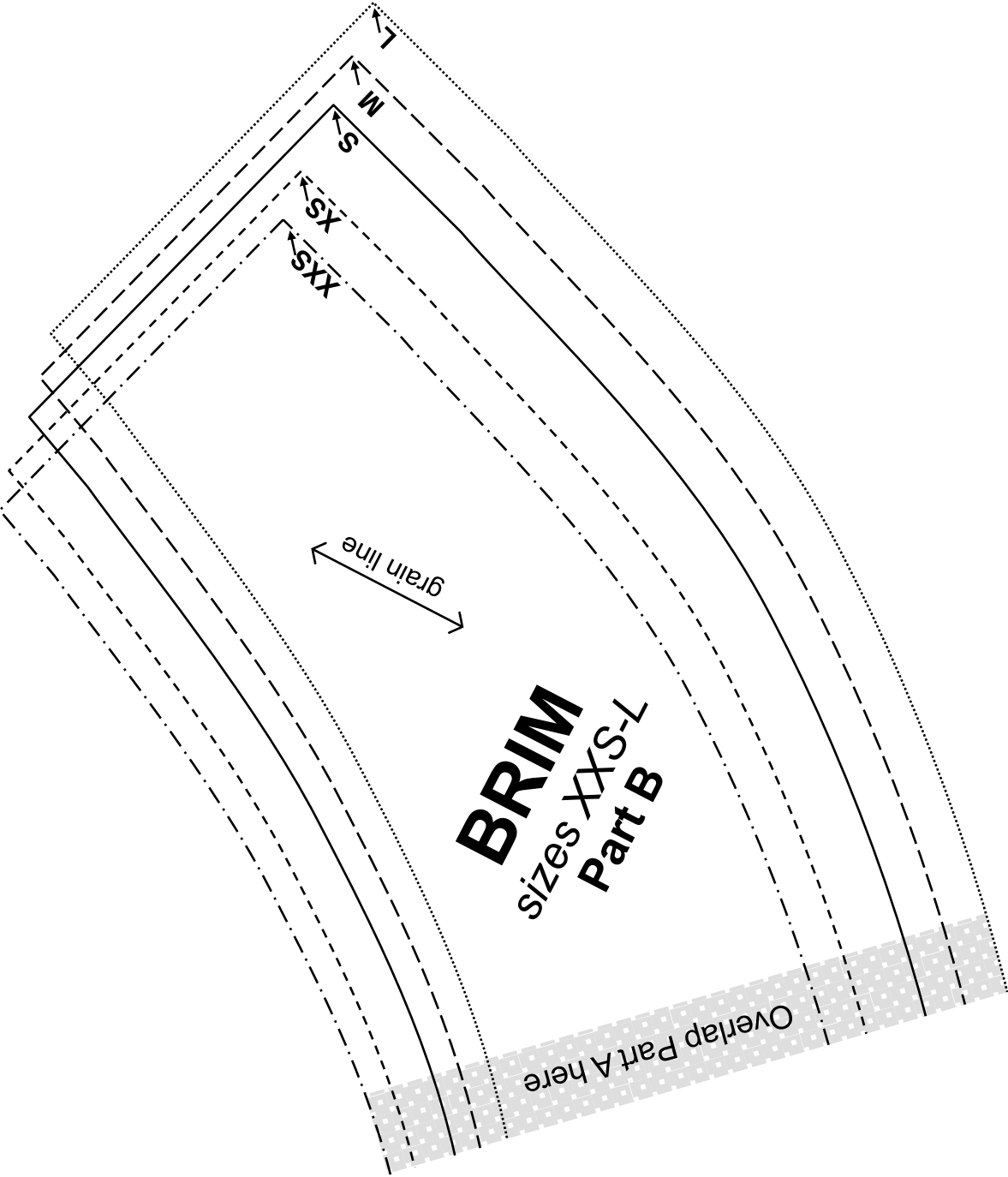
Place over Part B

Cut 1 of laminated cotton
Cut 1 of interfacing
Cut 1 of lining

Raindrop Hat

BRIM
sizes XXS-L
Part A

Place edge on fold



BRIM
sizes XXS-L
Part B

grain line

Overlap Part A here

L
M
S
XS
XXS