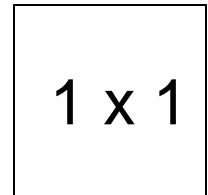
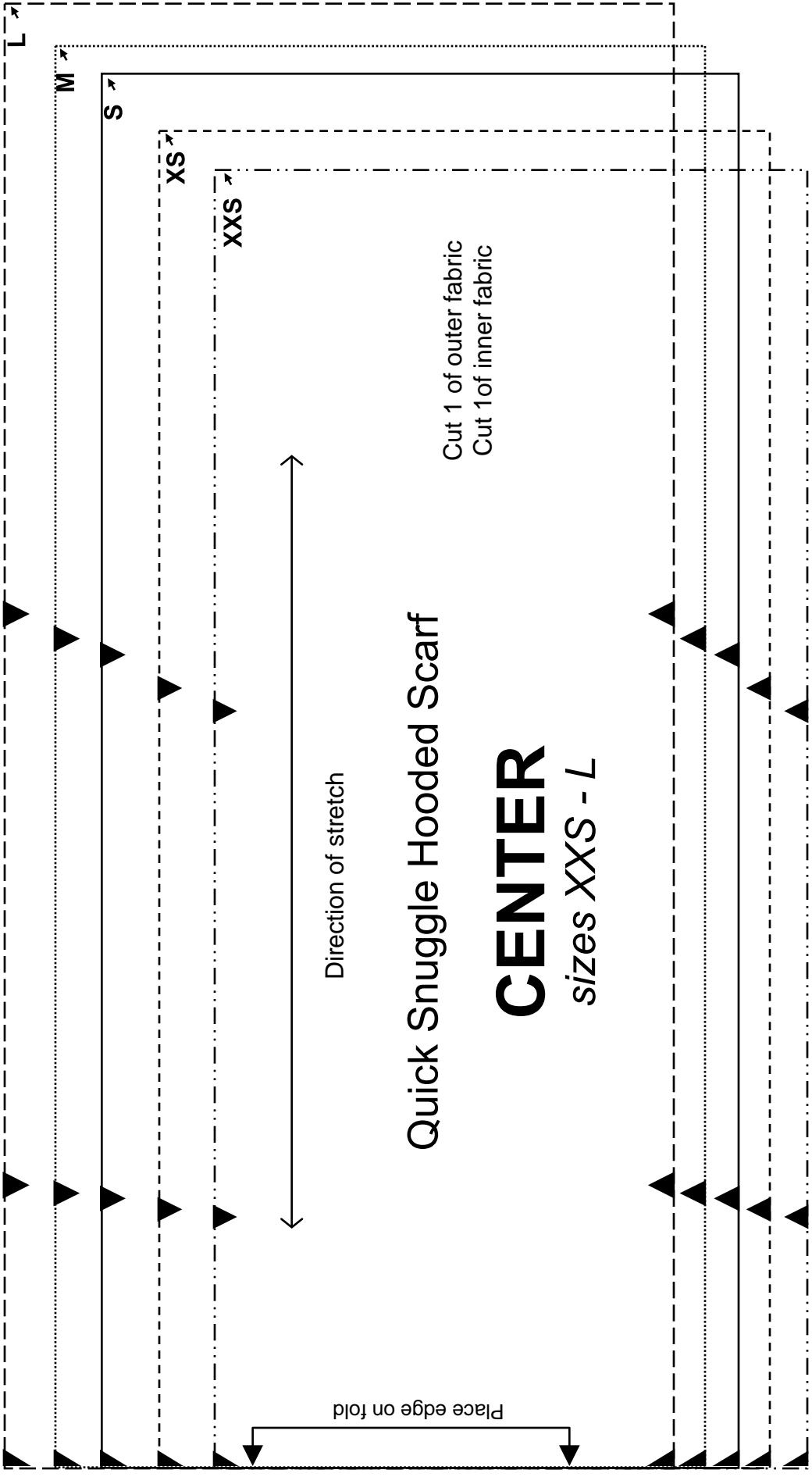


Quick Snuggle Hooded Scarf

Important note:

The pattern pieces are designed to be printed at 100%. Before printing the patterns, make sure that page scaling is set to none in Adobe Acrobat print window. To be sure that your patterns are going to print at the correct size, measure the box on the first pattern page. It should measure exactly 1 inch by 1 inch.





Quick Snuggle Hooded Scarf

CENTER
sizes XXS - L

Cut 1 of outer fabric
Cut 1 of inner fabric

Direction of stretch

Place edge on fold

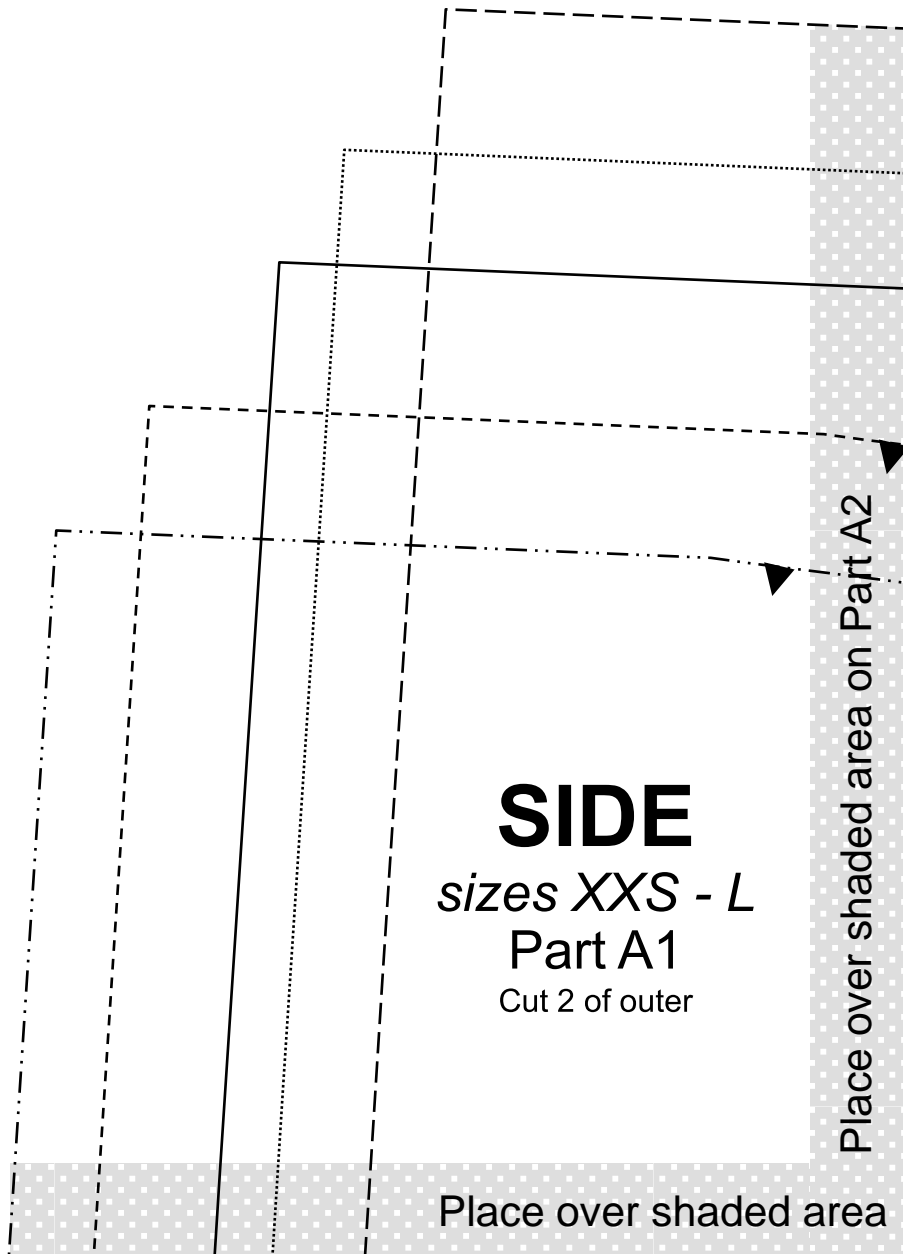
L

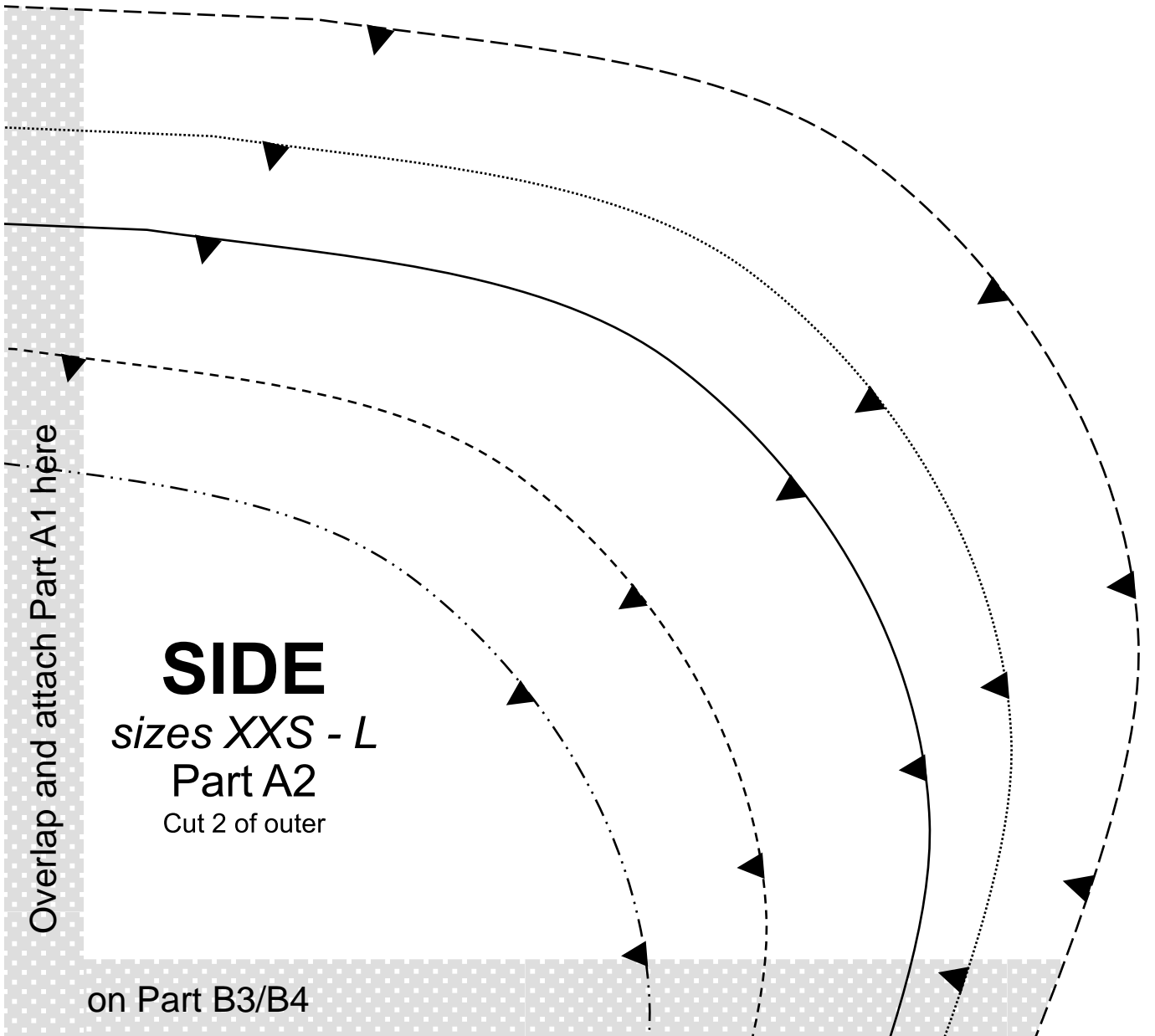
M

S

XS

XXS





SIDE

sizes XXS - L

Part A2

Cut 2 of outer

Overlap and attach Part A1 here

on Part B3/B4



Quick Snuggle Hooded Scarf

SIDE

sizes XXS - L

Part B1

Cut 2 of outer fabric

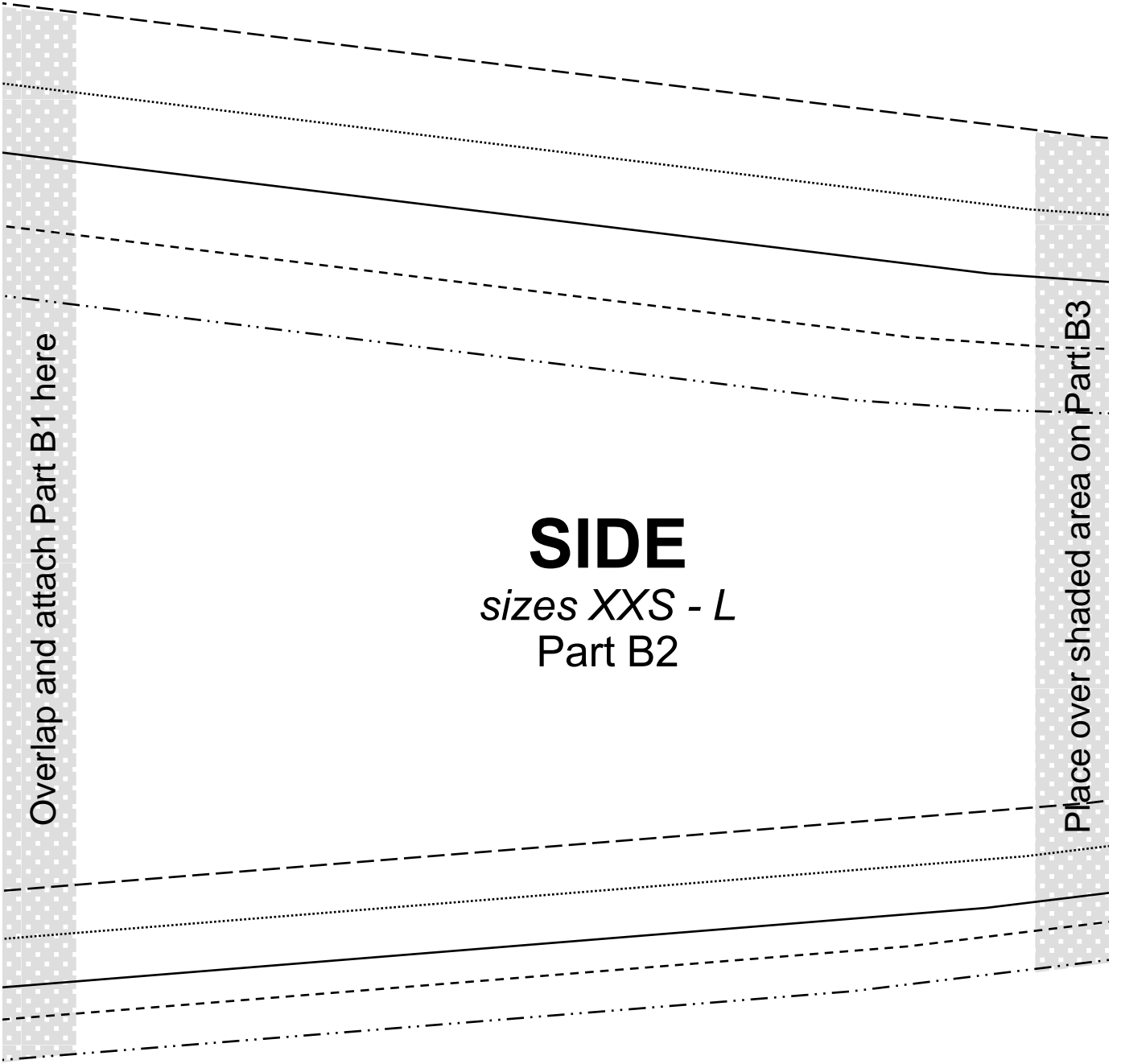
Cut 2 of inner fabric

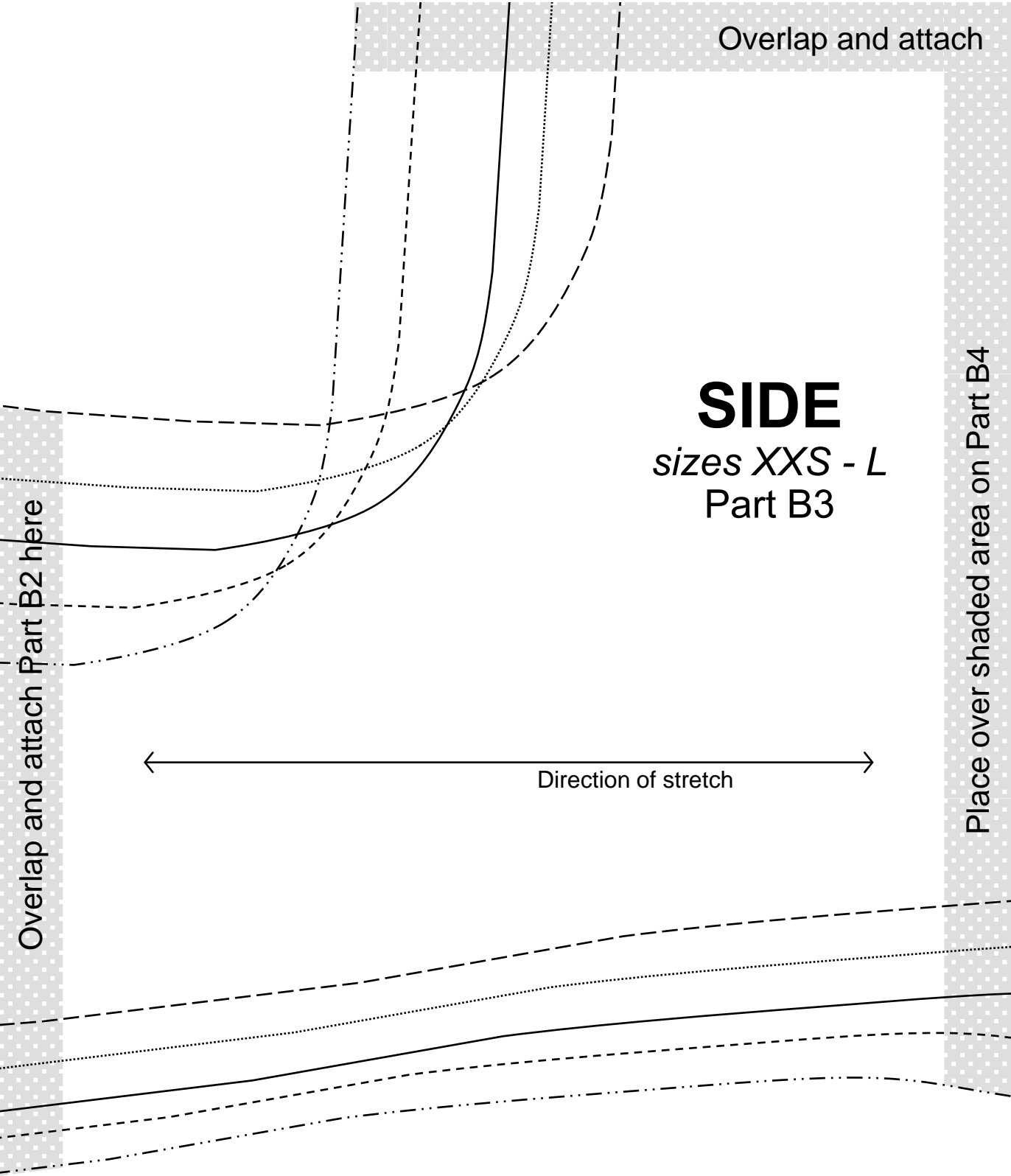
Place over shaded area on Part B2

Overlap and attach Part B1 here

SIDE
sizes XXS - L
Part B2

Place over shaded area on Part B3





Overlap and attach

SIDE

sizes *XXS - L*
Part B3

Overlap and attach Part B2 here

Place over shaded area on Part B4

← Direction of stretch →

Part A1/A2 here

Overlap and attach Part B3 here

SIDE

sizes *XXS - L*
Part B4

