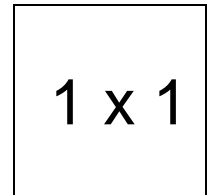


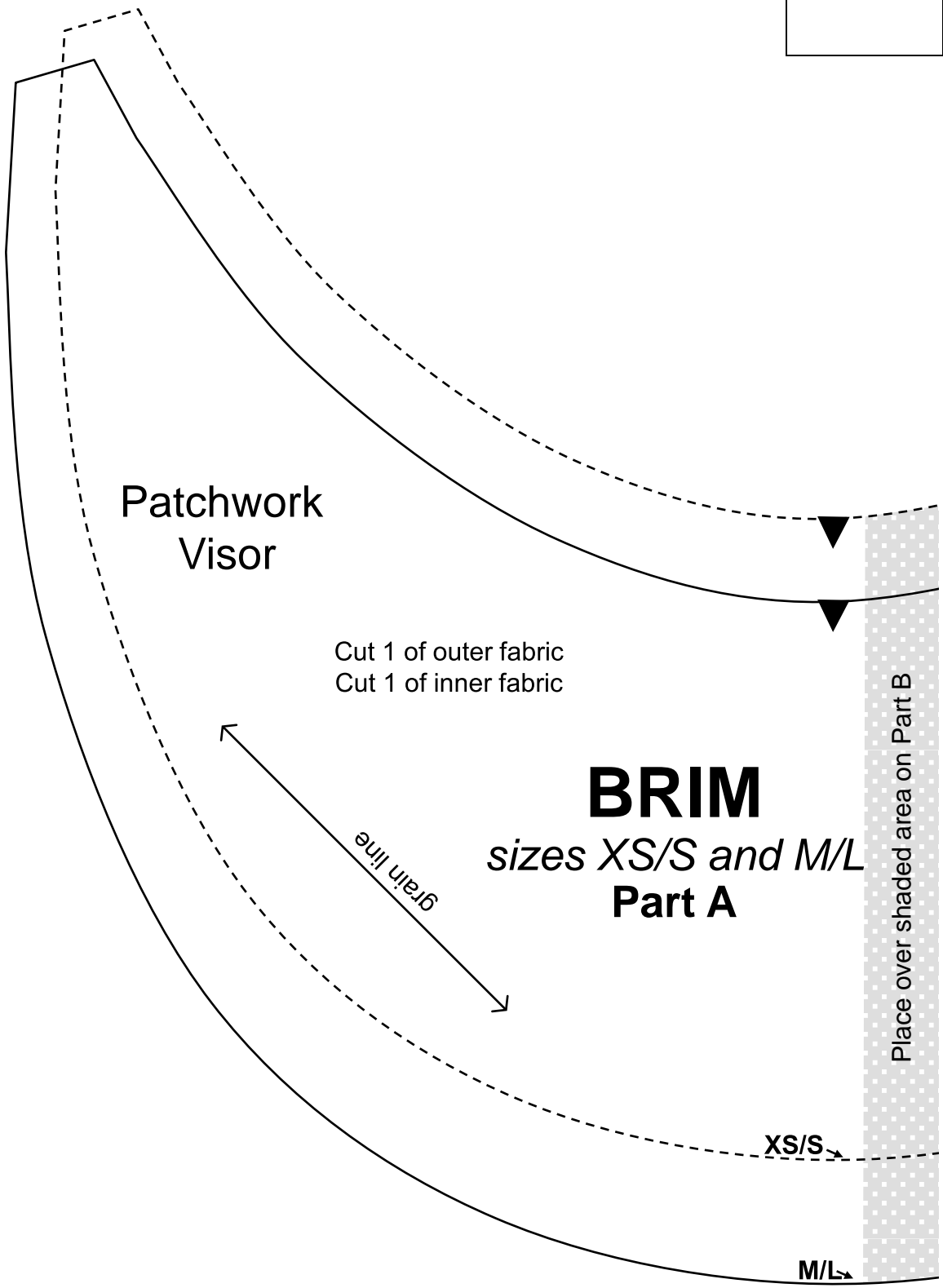
Patchwork Visor

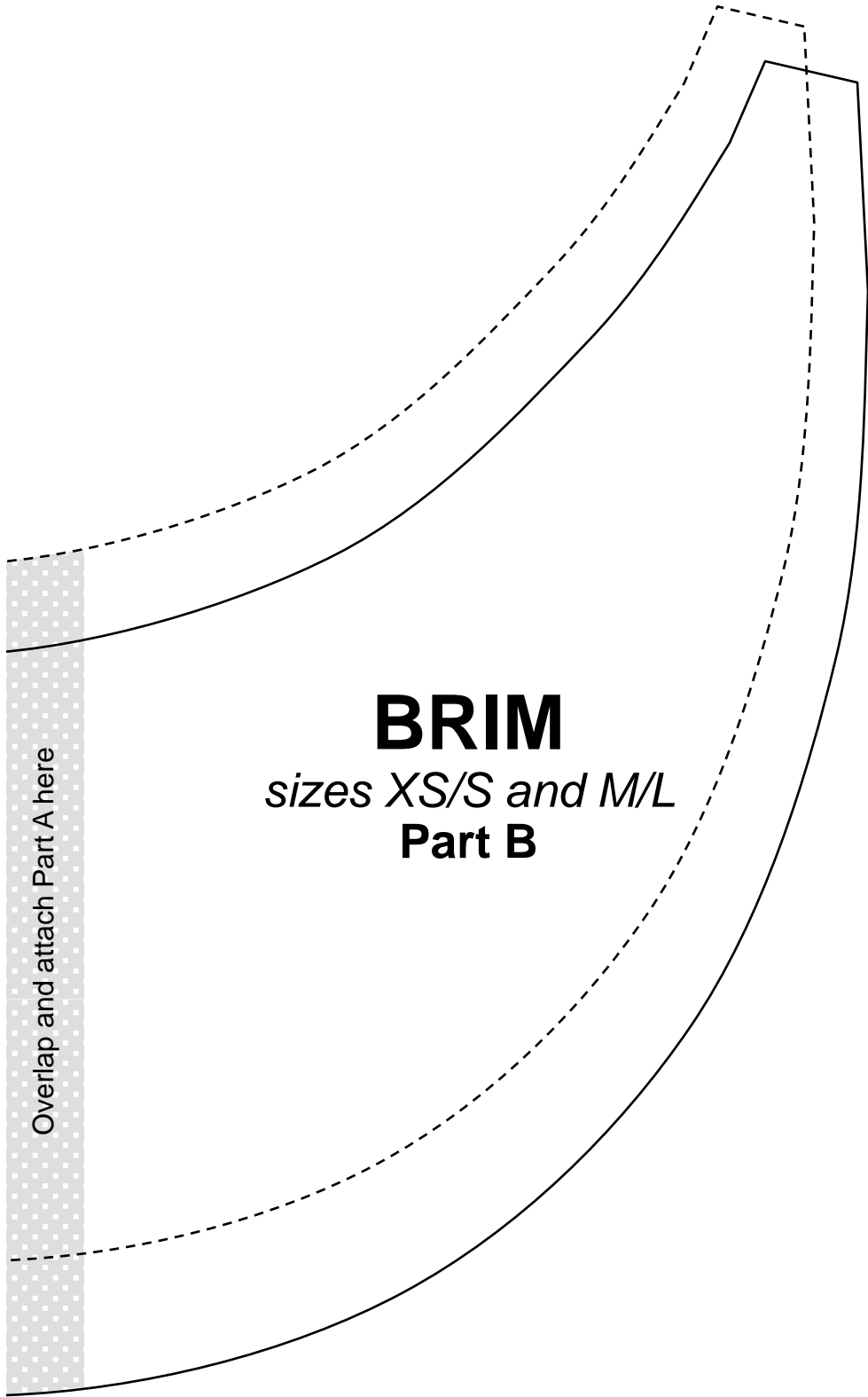
Important note:

The pattern pieces are designed to be printed at 100%. Before printing the patterns, make sure that page scaling is set to none in Adobe Acrobat print window. To be sure that your patterns are going to print at the correct size, measure the box on the first pattern page. It should measure exactly 1 inch by 1 inch.



1 x 1





Overlap and attach Part A here

BRIM
sizes XS/S and M/L
Part B

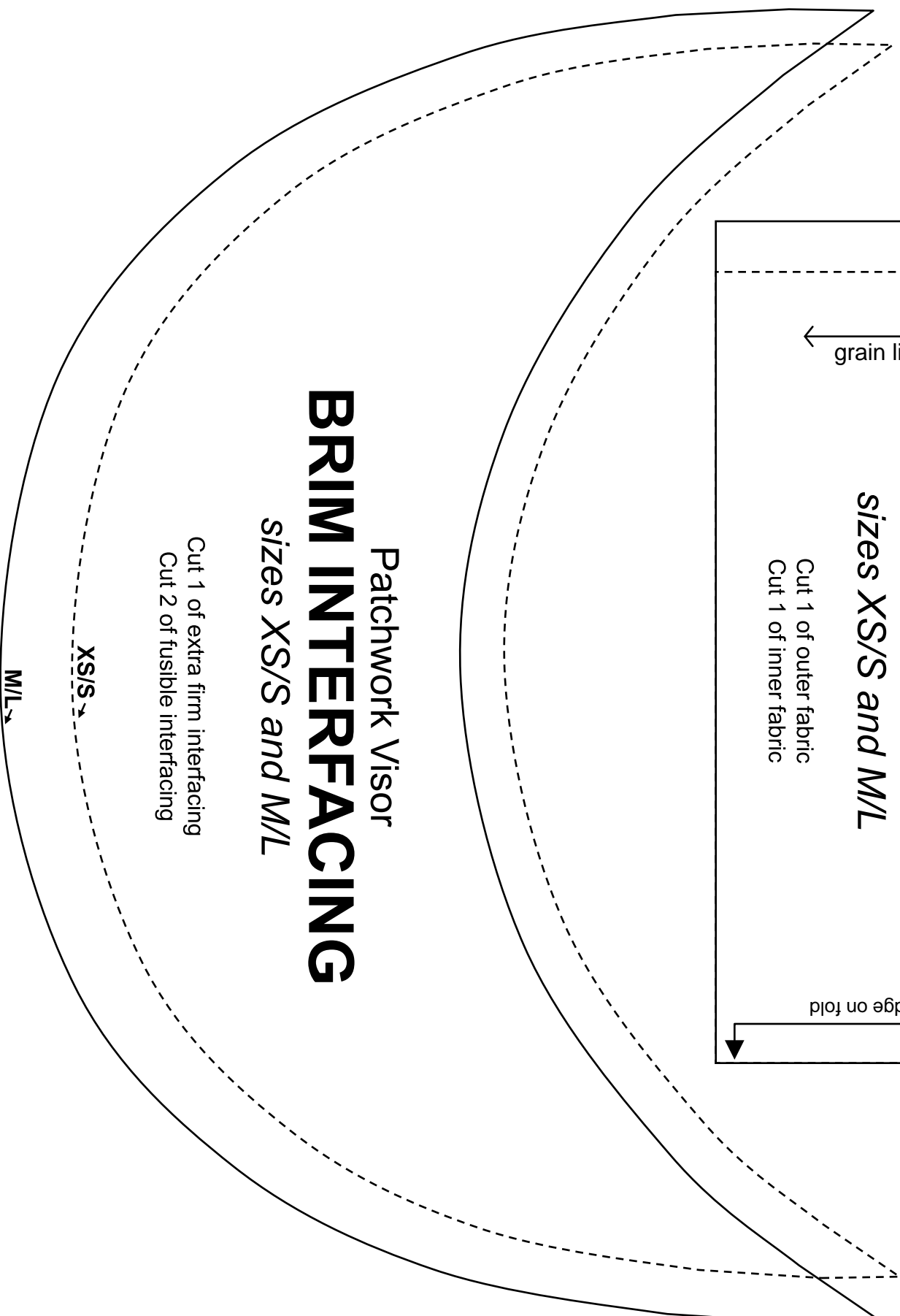


Patchwork Visor

BACK BAND

sizes XS/S and M/L

Cut 1 of outer fabric
Cut 1 of inner fabric



Patchwork Visor

BRIM INTERFACING

sizes XS/S and M/L

Cut 1 of extra firm interfacing
Cut 2 of fusible interfacing

