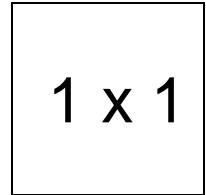


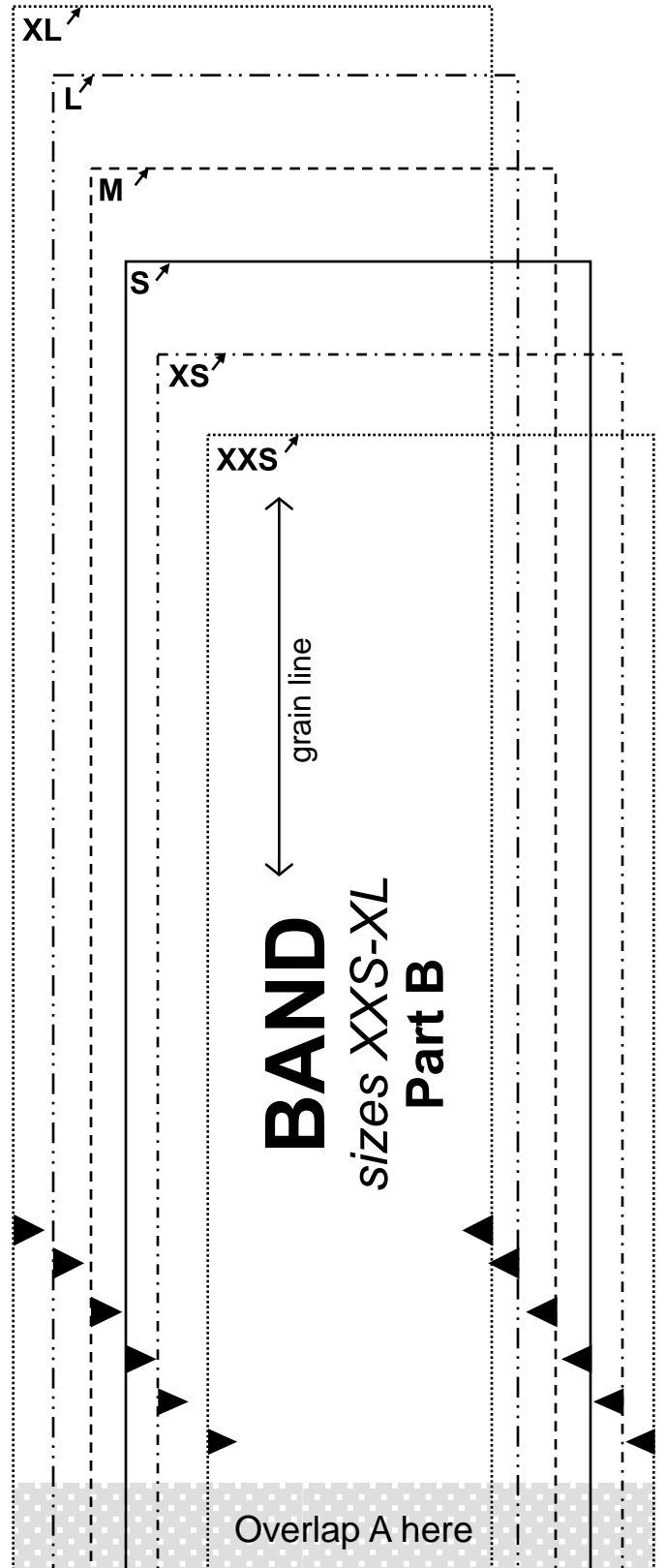
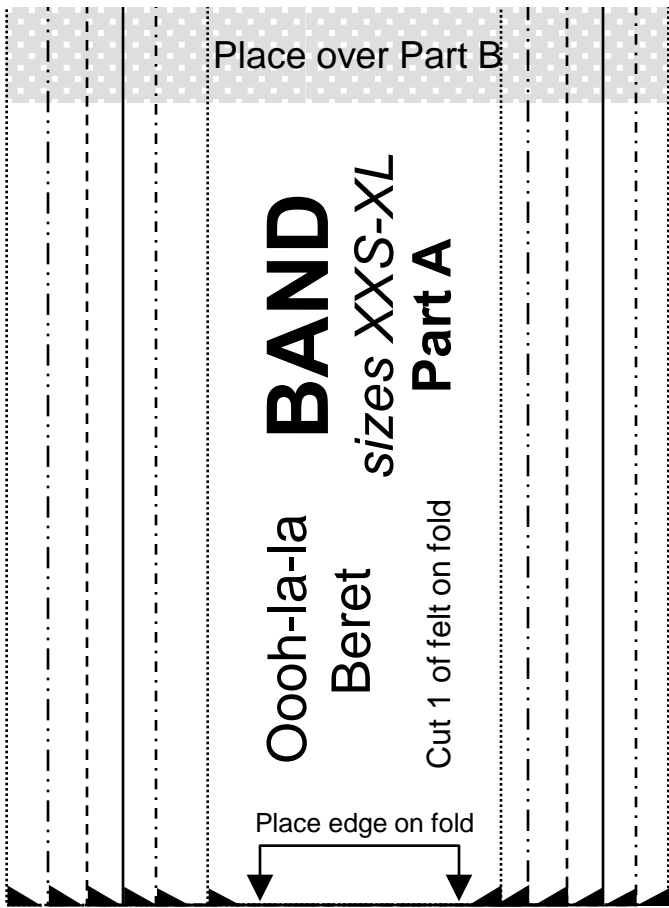
Oooh-La-La Beret

Important note:

The pattern pieces are designed to be printed at 100%. Before printing the patterns, make sure that page scaling is set to none in Adobe Acrobat print window. To be sure that your patterns are going to print at the correct size, measure the box on the first pattern page. It should measure exactly 1 inch by 1 inch.



1 x 1





Oooh-la-la Beret

TOP CROWN

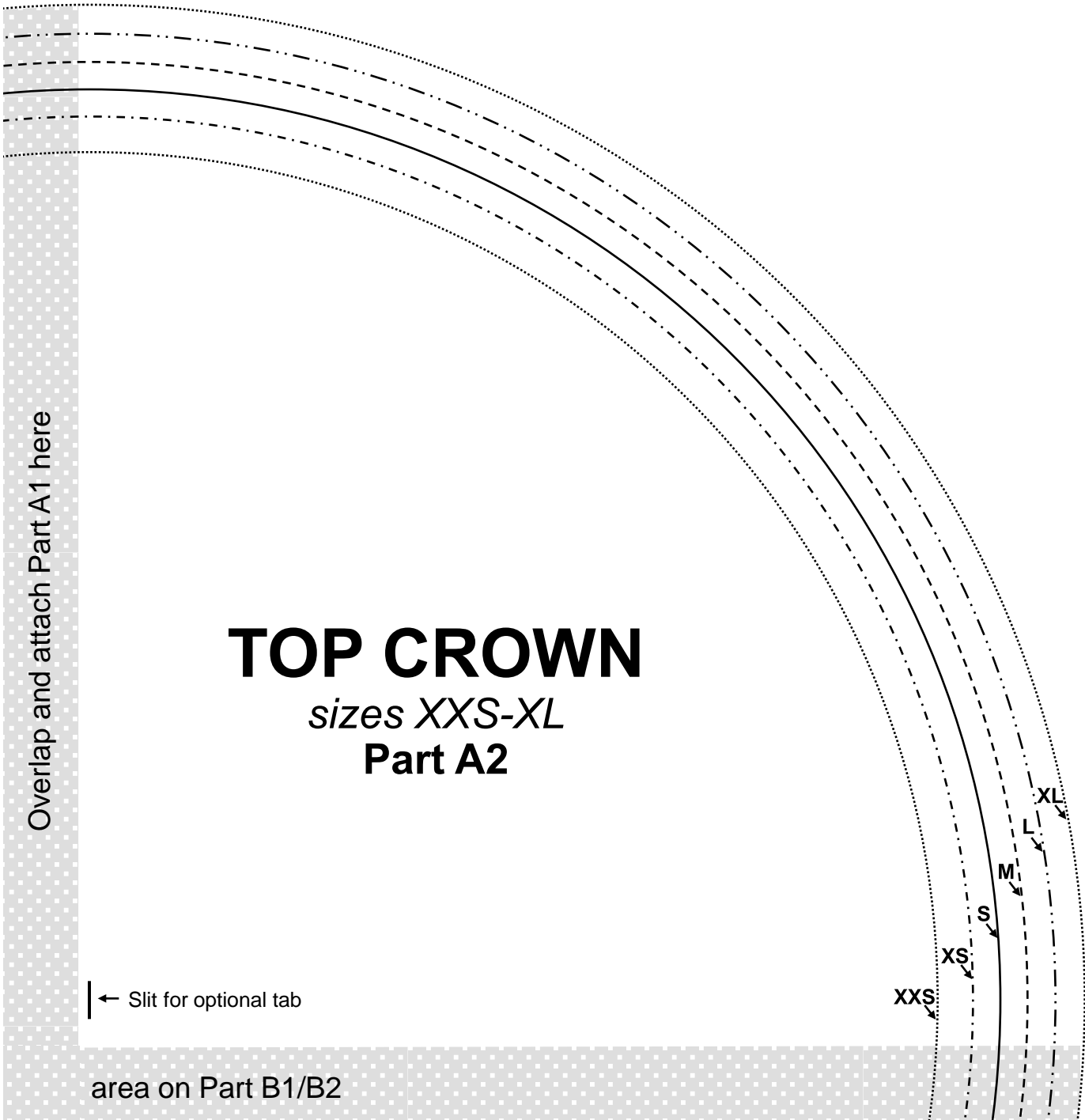
sizes *XXS-XL*

Part A1

Cut 1 of felt
Cut 1 of lining fabric

Place over shaded area on Part A2

Place over shaded



Overlap and attach Part A1 here

TOP CROWN

sizes *XXS-XL*
Part A2

← Slit for optional tab

area on Part B1/B2

XXS
XS
S
M
L
XL

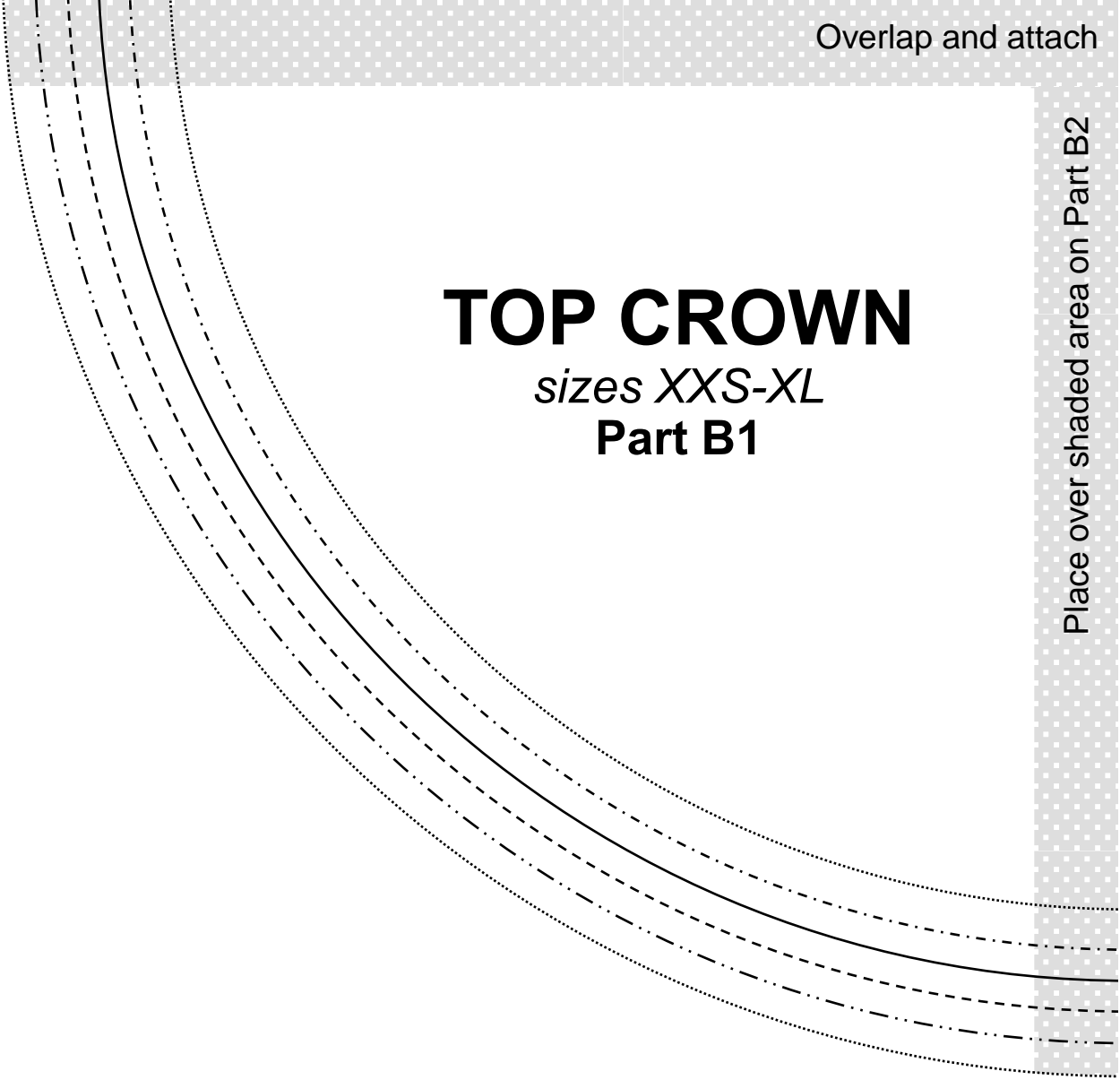
Overlap and attach

TOP CROWN

sizes XXS-XL

Part B1

Place over shaded area on Part B2



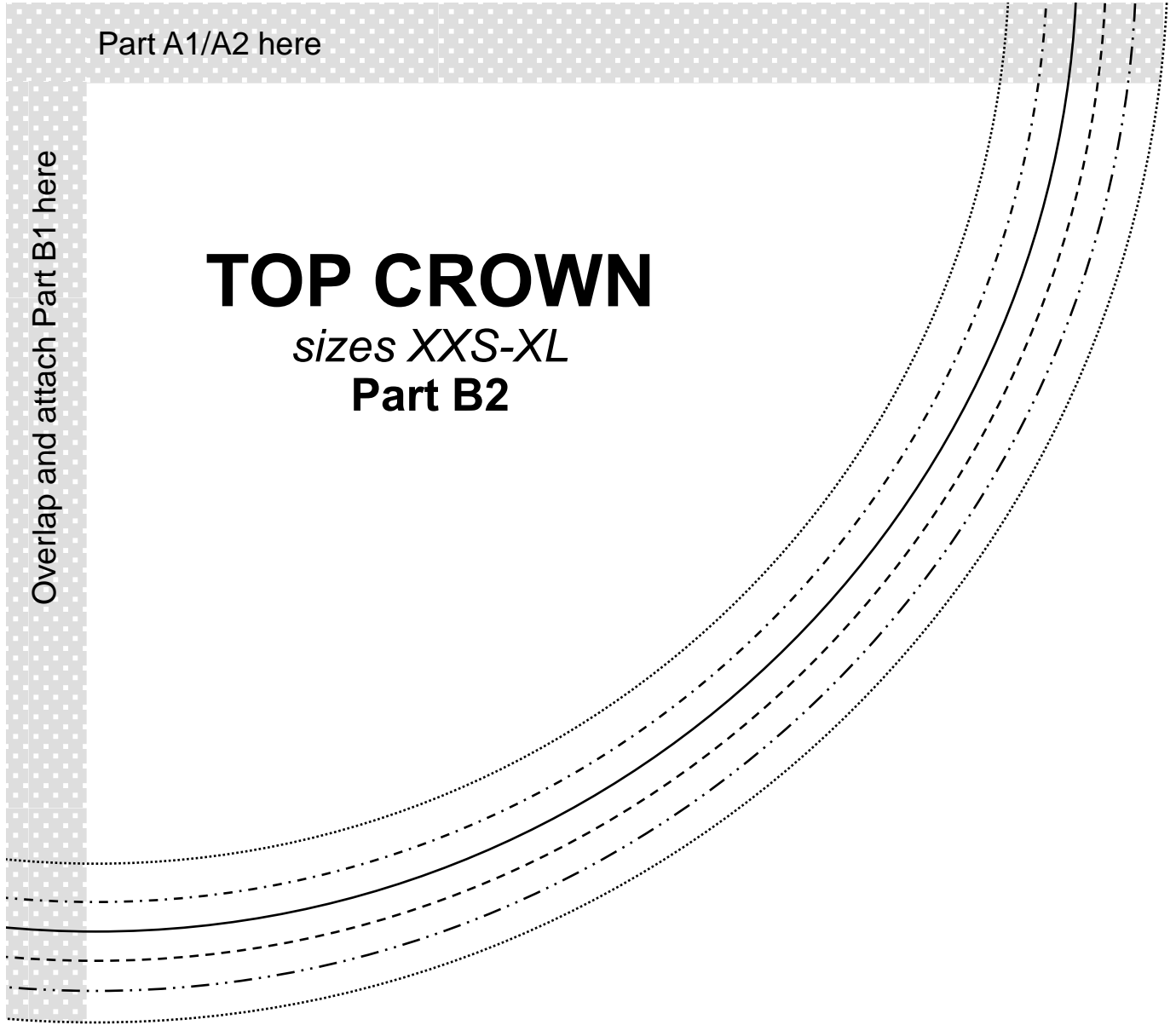
Part A1/A2 here

Overlap and attach Part B1 here

TOP CROWN

sizes *XXS-XL*

Part B2



Oooh-la-la
Beret

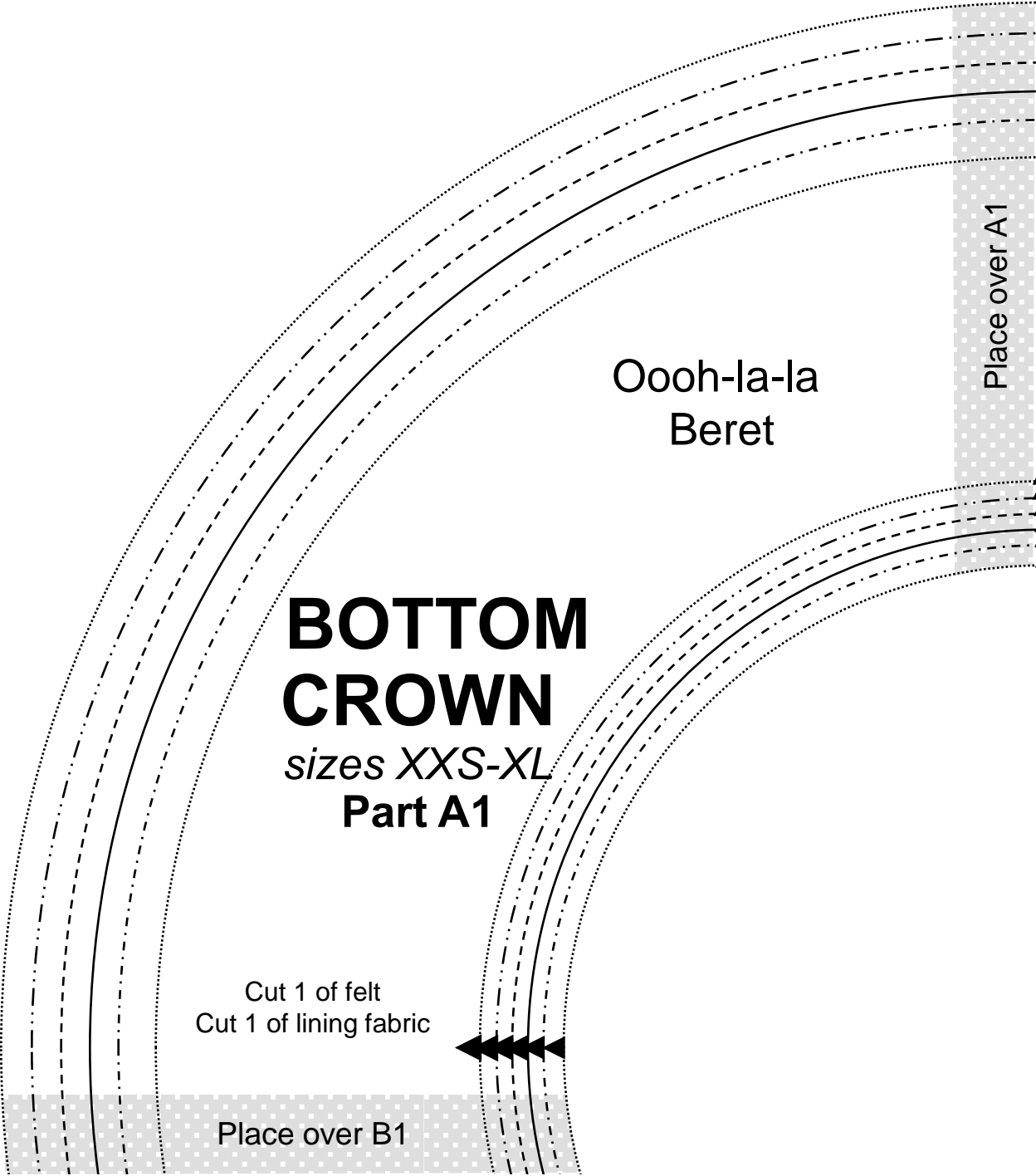
Place over A1

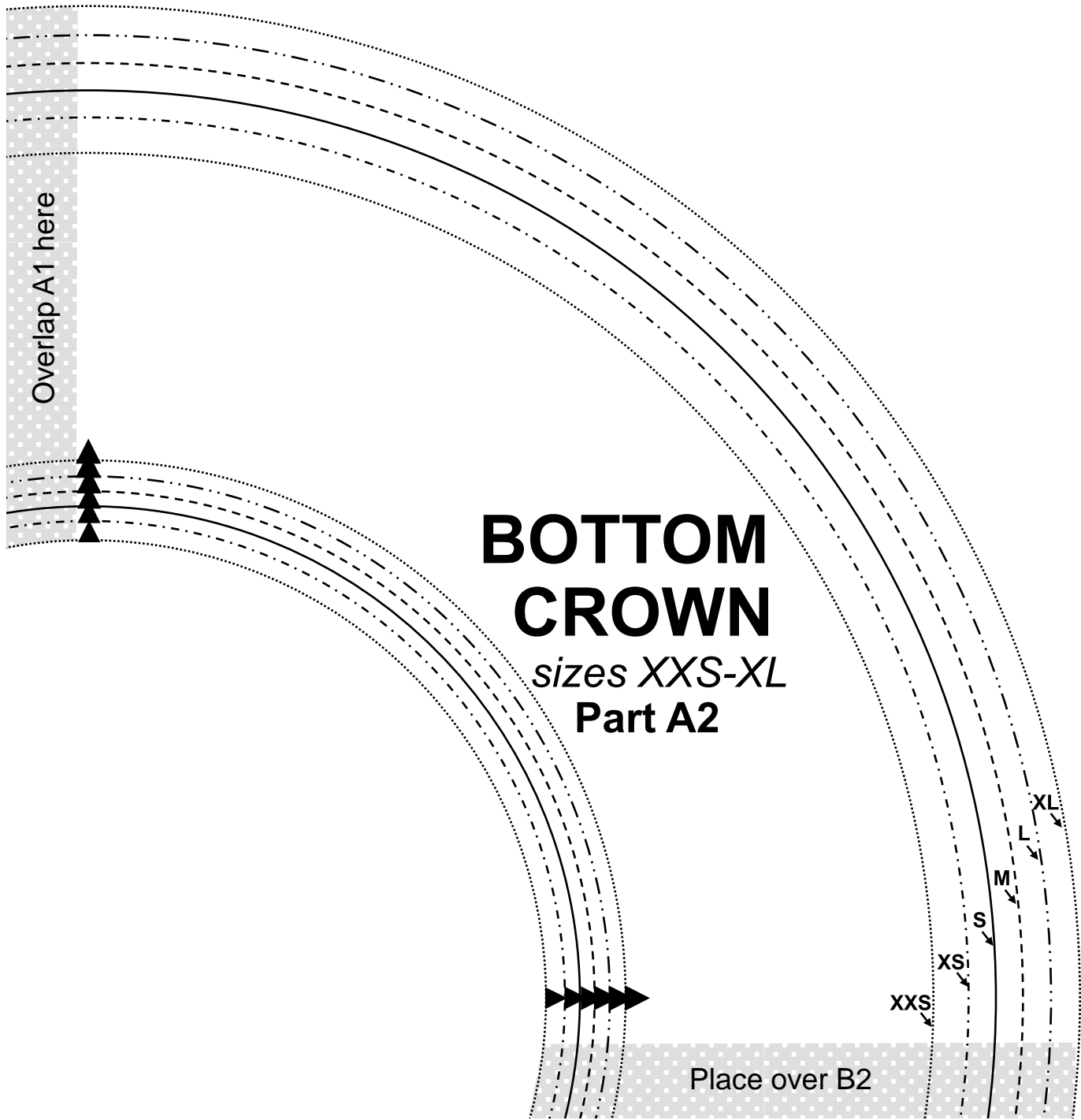
**BOTTOM
CROWN**
sizes XXS-XL
Part A1

Cut 1 of felt
Cut 1 of lining fabric



Place over B1





Overlap A1 here

BOTTOM CROWN

sizes *XXS-XL*
Part A2

Place over B2

XXS
XS
S
M
XL

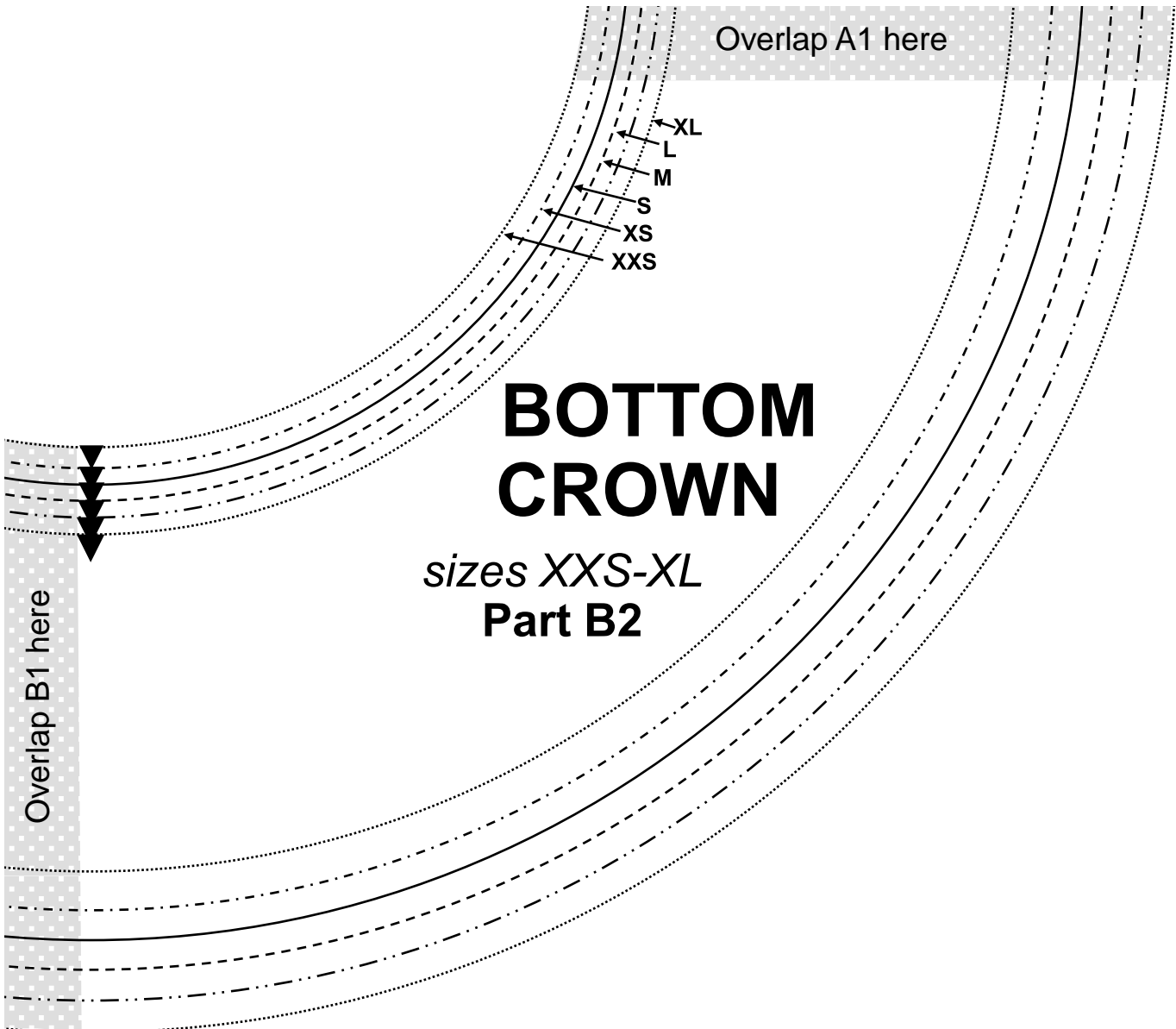


Overlap A1 here

BOTTOM CROWN

sizes XXS-XL
Part B1

Place over B2



Overlap A1 here

XL
L
M
S
XS
XXS

BOTTOM CROWN

sizes XXS-XL
Part B2

Overlap B1 here