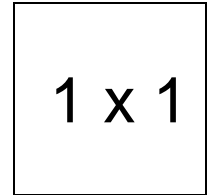


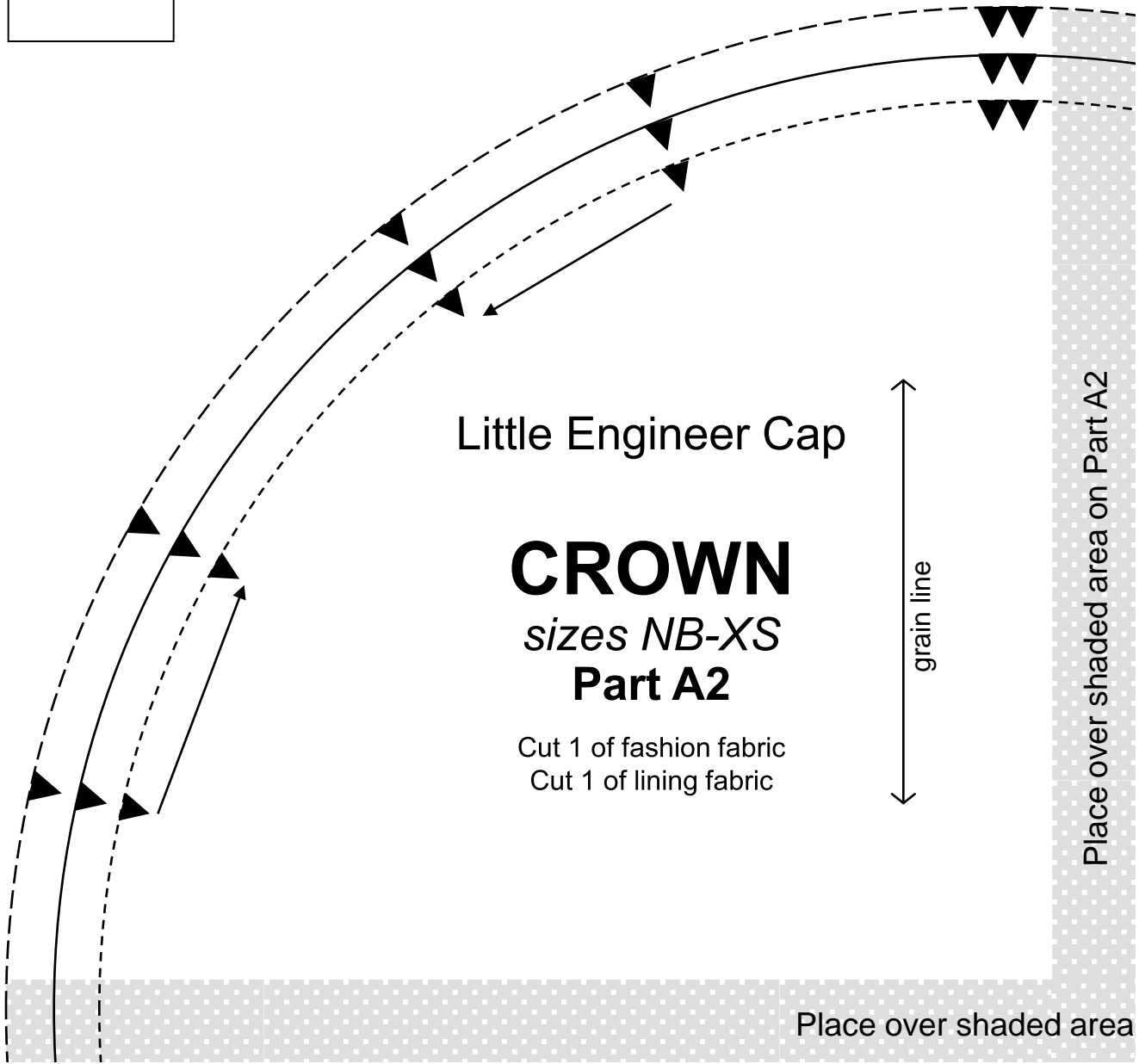
Little Engineer Cap

Important note:

The pattern pieces are designed to be printed at 100%. Before printing the patterns, make sure that page scaling is set to none in Adobe Acrobat print window. To be sure that your patterns are going to print at the correct size, measure the box on the first pattern page. It should measure exactly 1 inch by 1 inch.



1 x 1



Little Engineer Cap

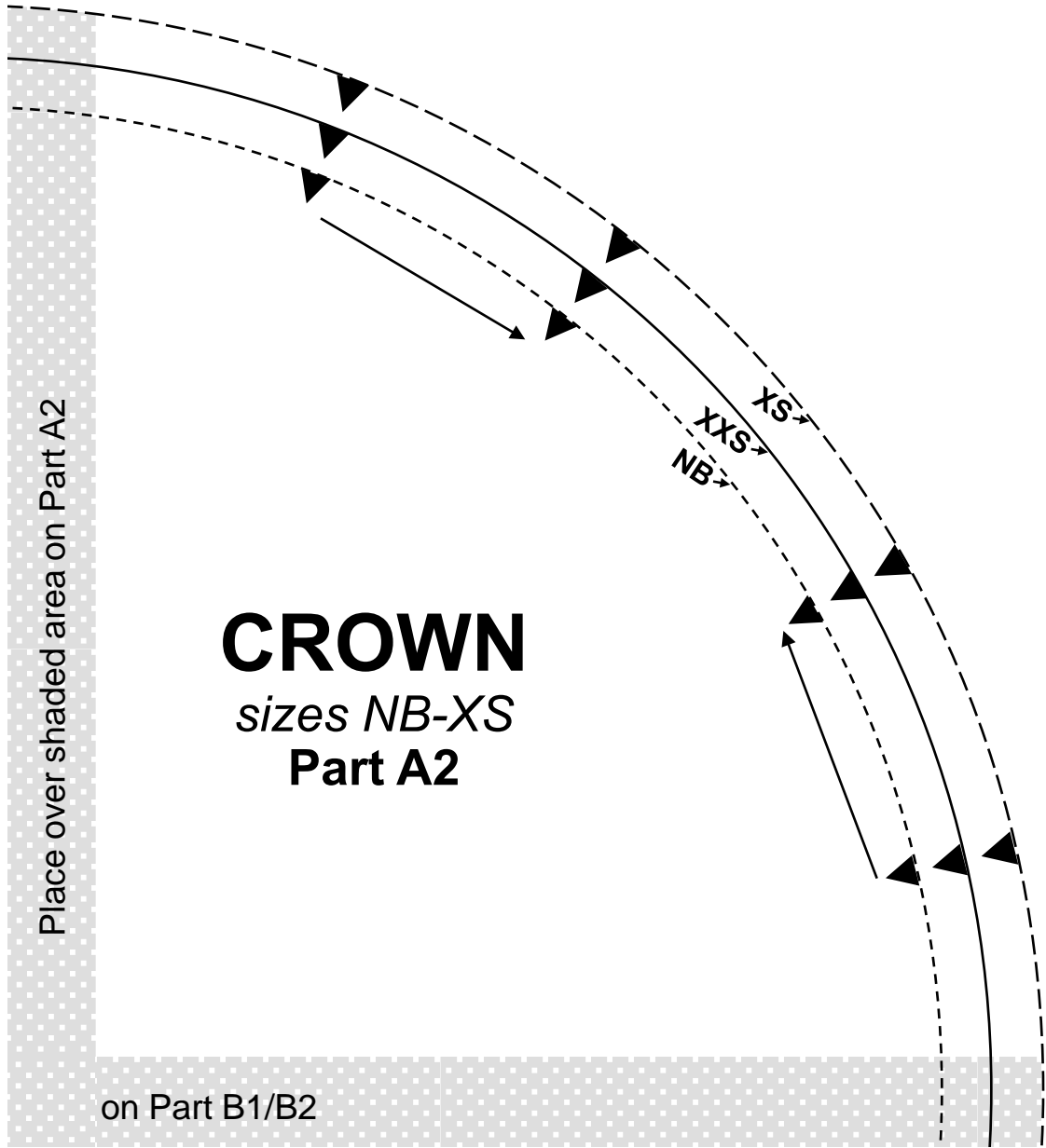
CROWN
sizes NB-XS
Part A2

Cut 1 of fashion fabric
Cut 1 of lining fabric

grain line

Place over shaded area on Part A2

Place over shaded area



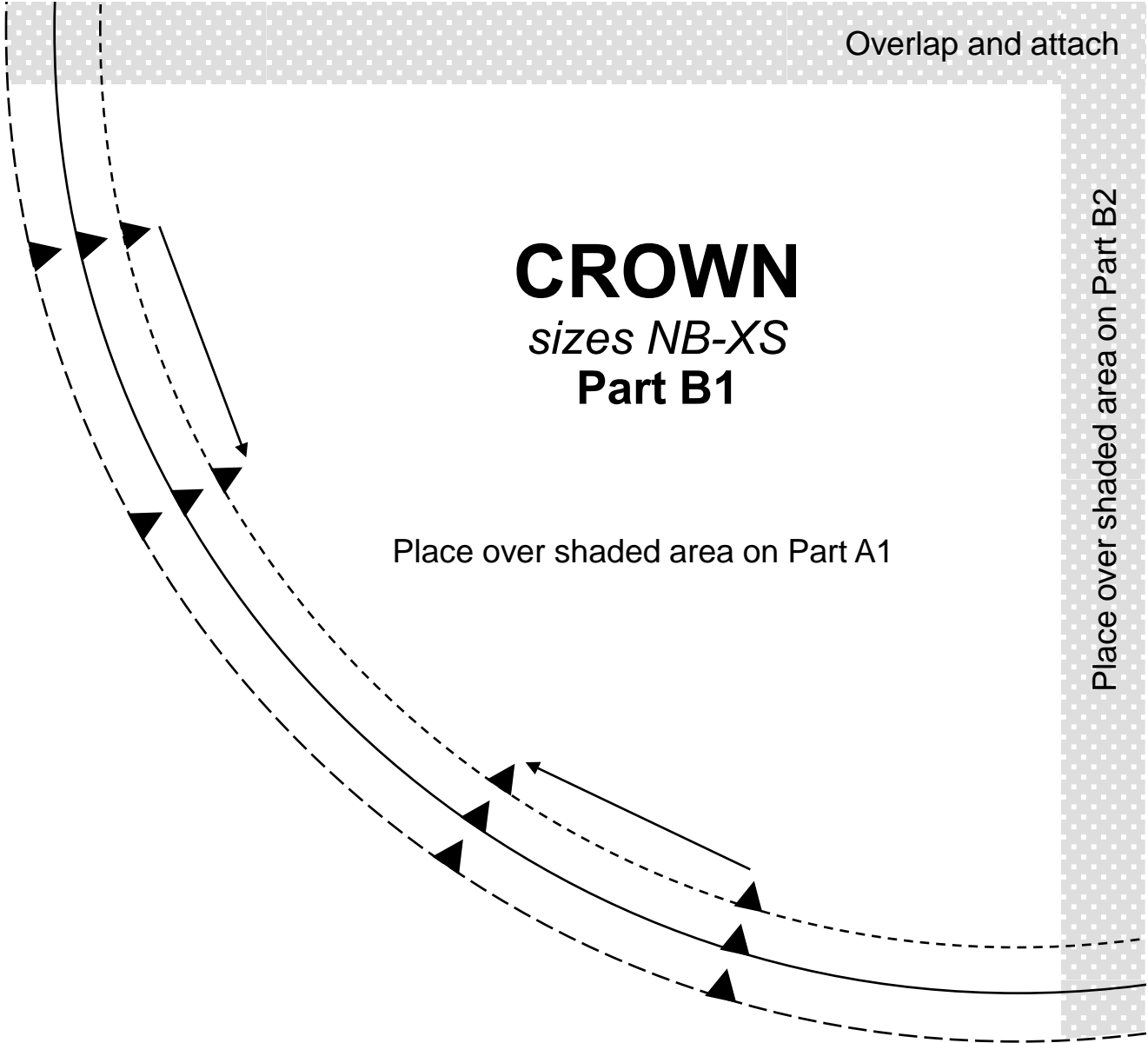
Overlap and attach

CROWN

sizes NB-XS
Part B1

Place over shaded area on Part A1

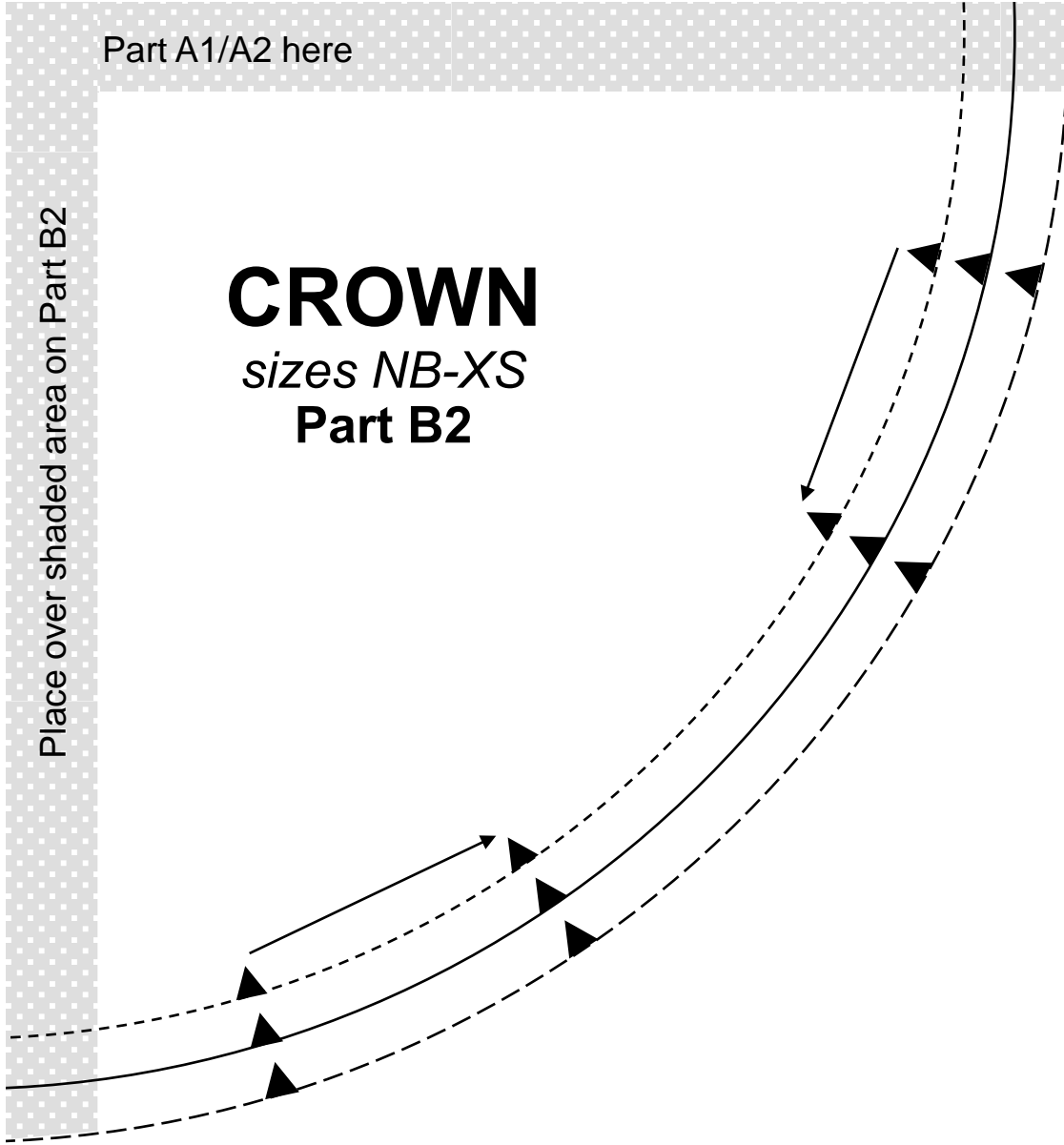
Place over shaded area on Part B2

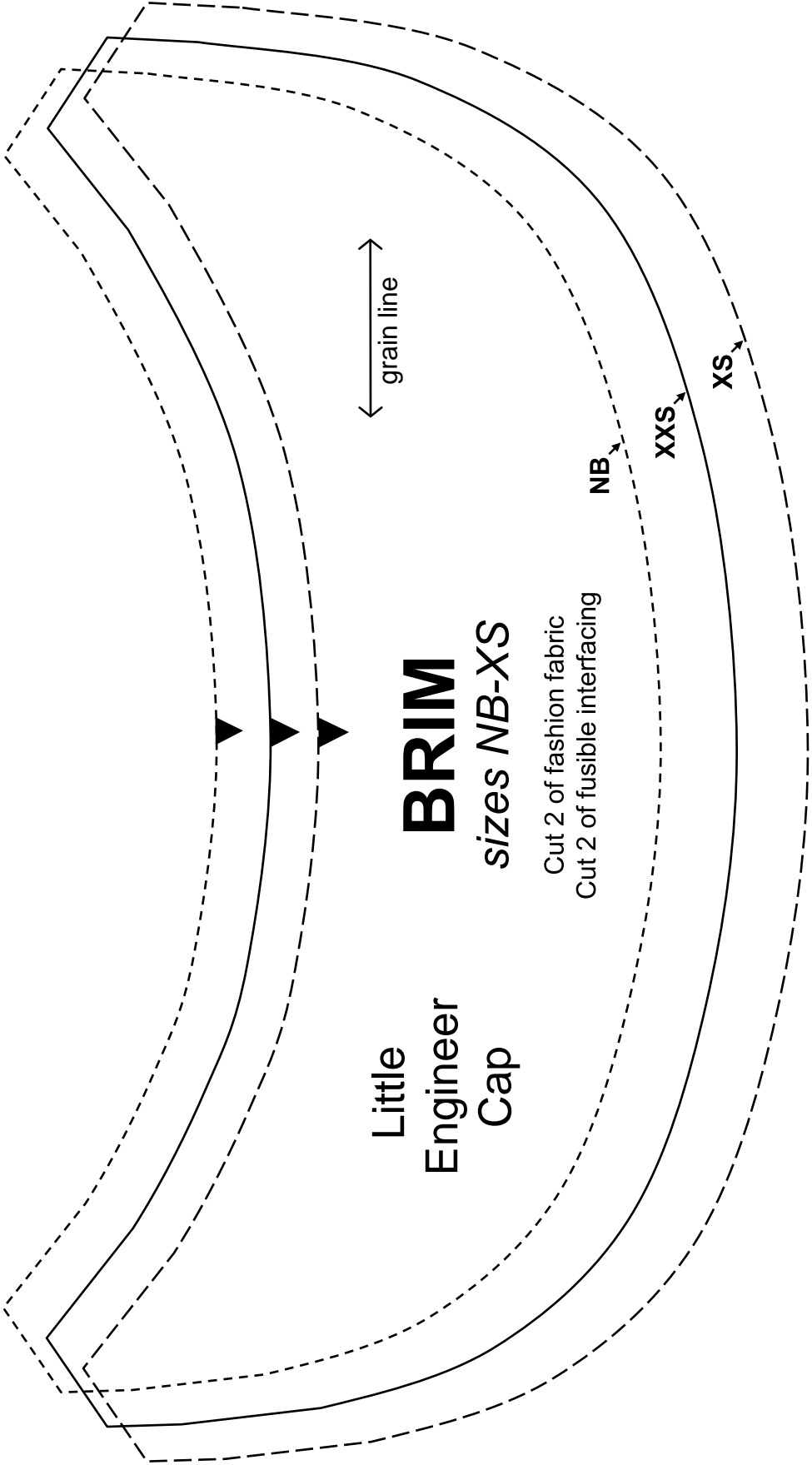


Part A1/A2 here

Place over shaded area on Part B2

CROWN
sizes NB-XS
Part B2





Little
Engineer
Cap

BRIM
sizes NB-XS

Cut 2 of fashion fabric
Cut 2 of fusible interfacing

grain line

NB

XXS

XS

