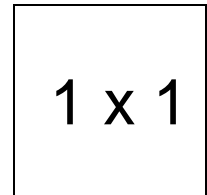


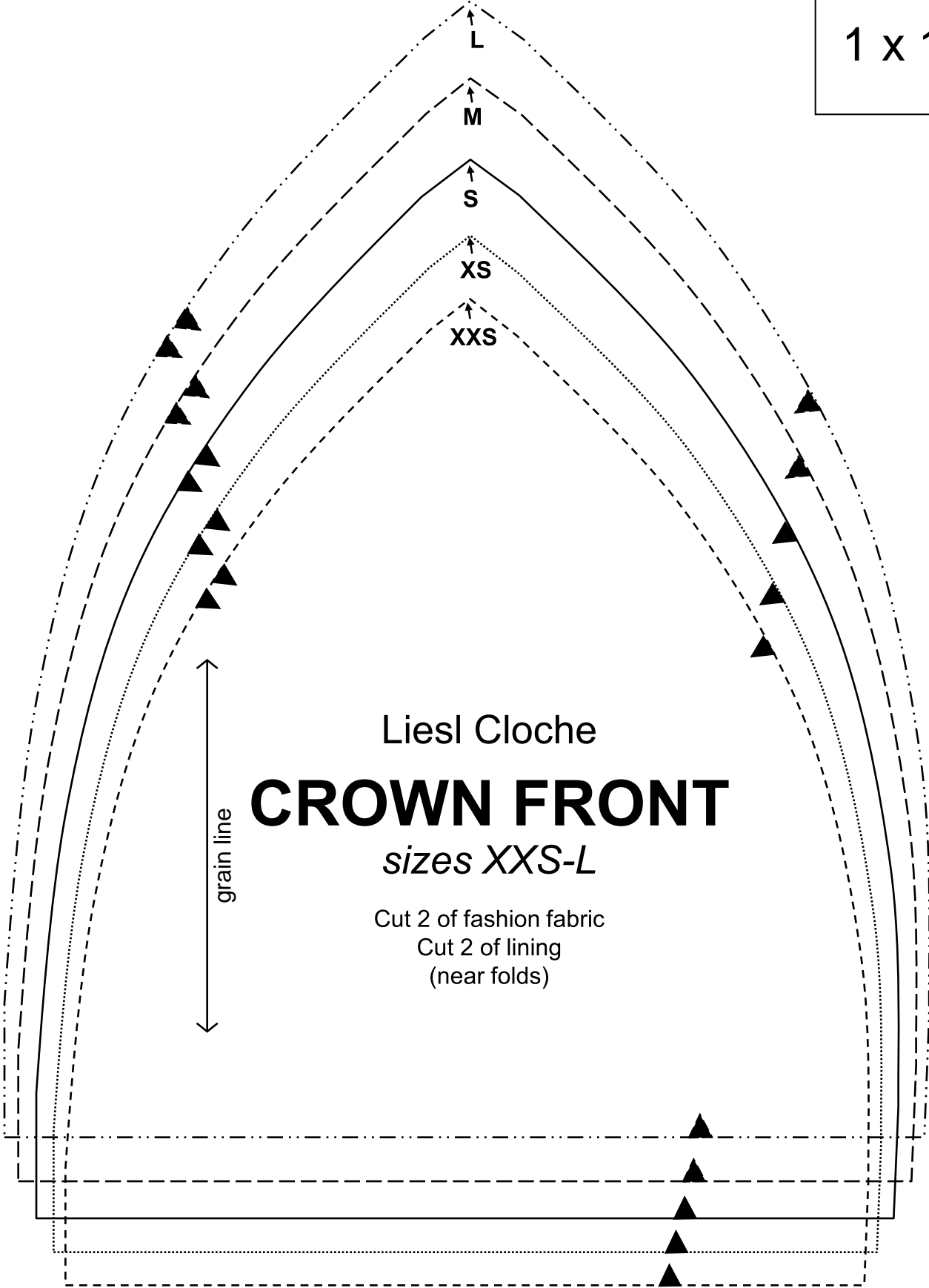
Liesl Cloch

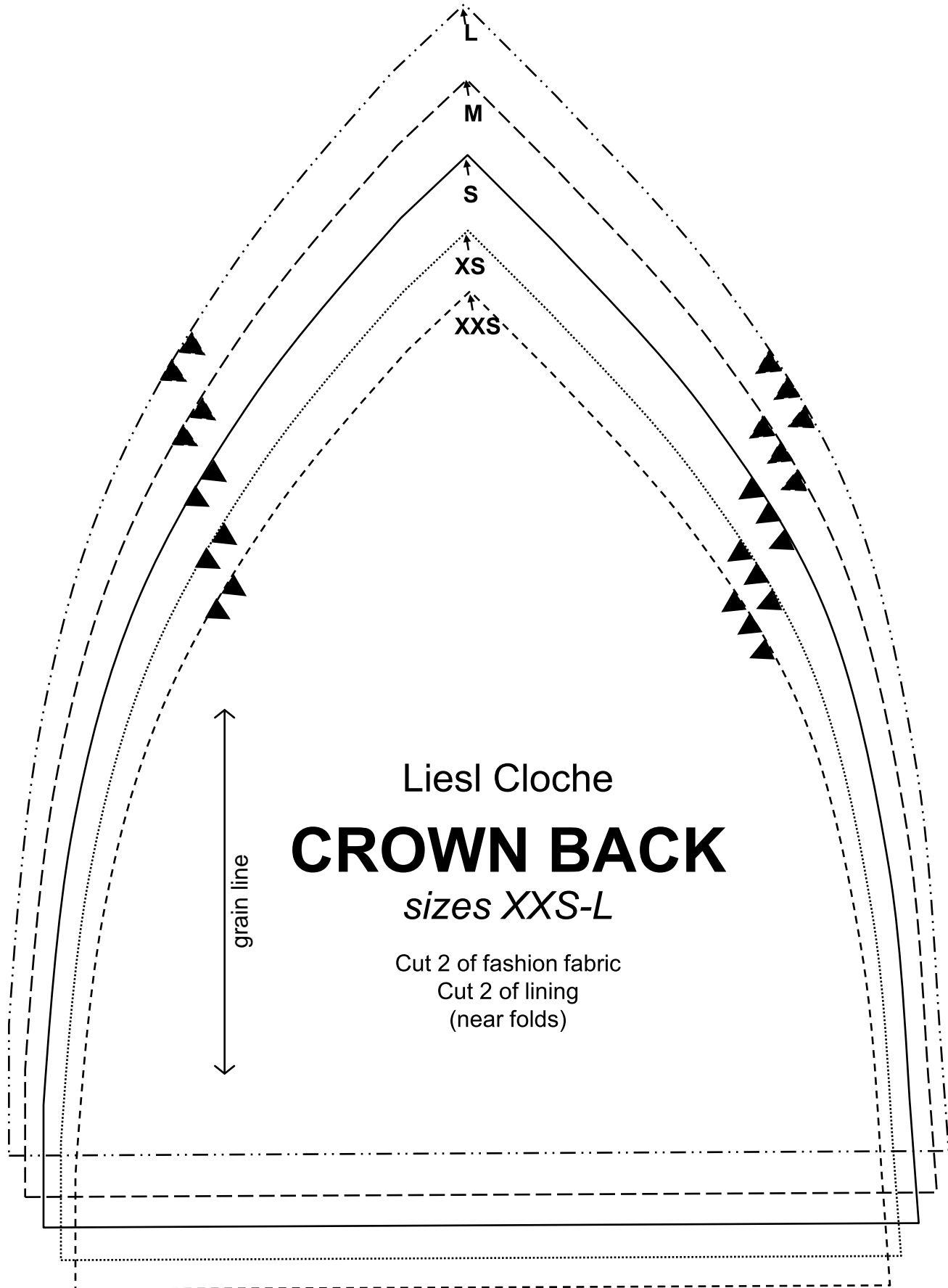
Important note:

The pattern pieces are designed to be printed at 100%. Before printing the patterns, make sure that page scaling is set to none in Adobe Acrobat print window. To be sure that your patterns are going to print at the correct size, measure the box on the first pattern page. It should measure exactly 1 inch by 1 inch.



1 x 1





Liesl Cloche

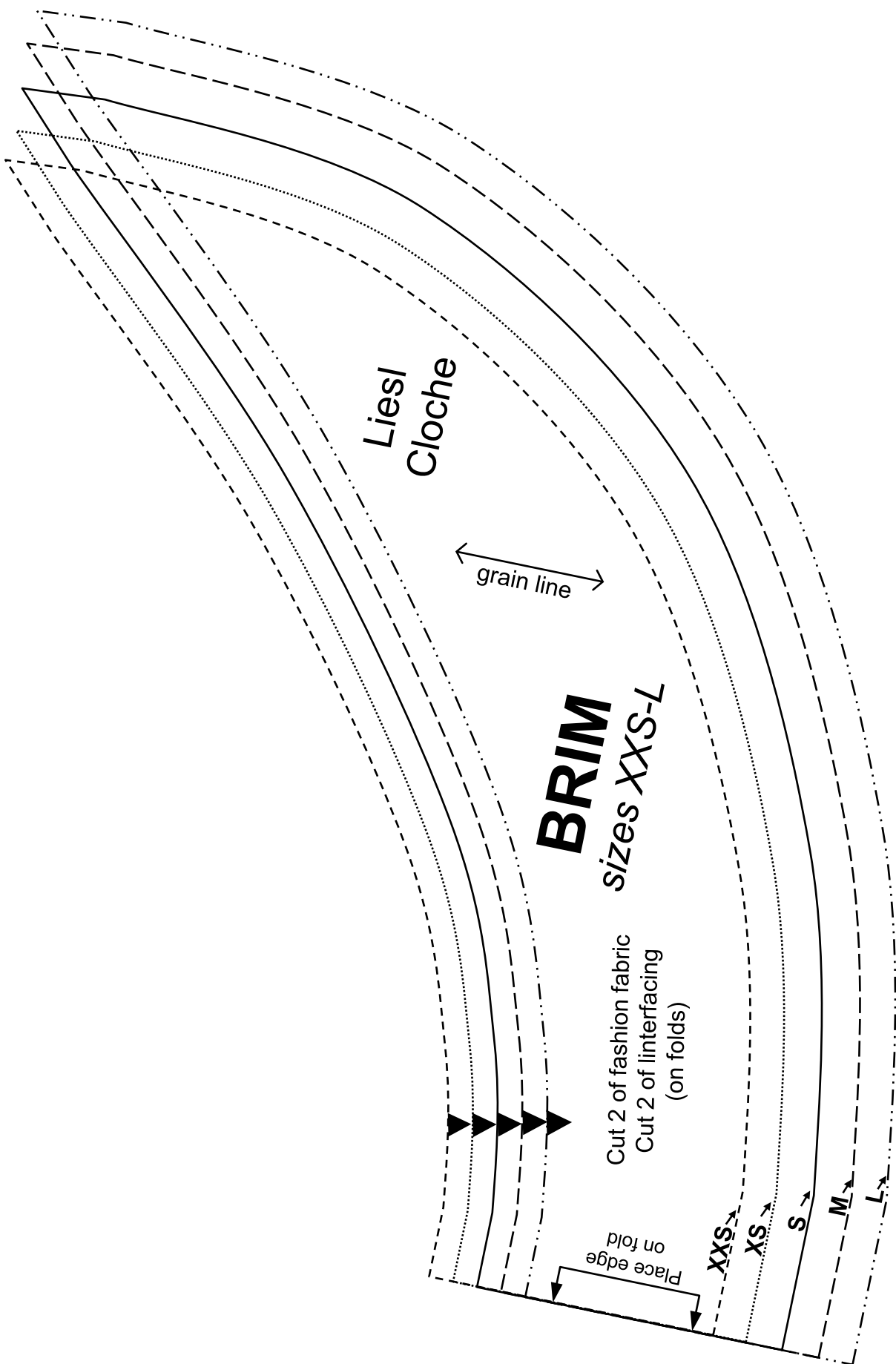
CROWN BACK

sizes XXS-L

Cut 2 of fashion fabric

Cut 2 of lining

(near folds)



Liesl
Cloche

grain line

BRIM
sizes XXS-L

Cut 2 of fashion fabric
Cut 2 of interfacing
(on folds)

Place edge
on fold

XXS

XS

S

M

L