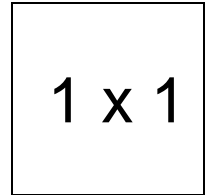


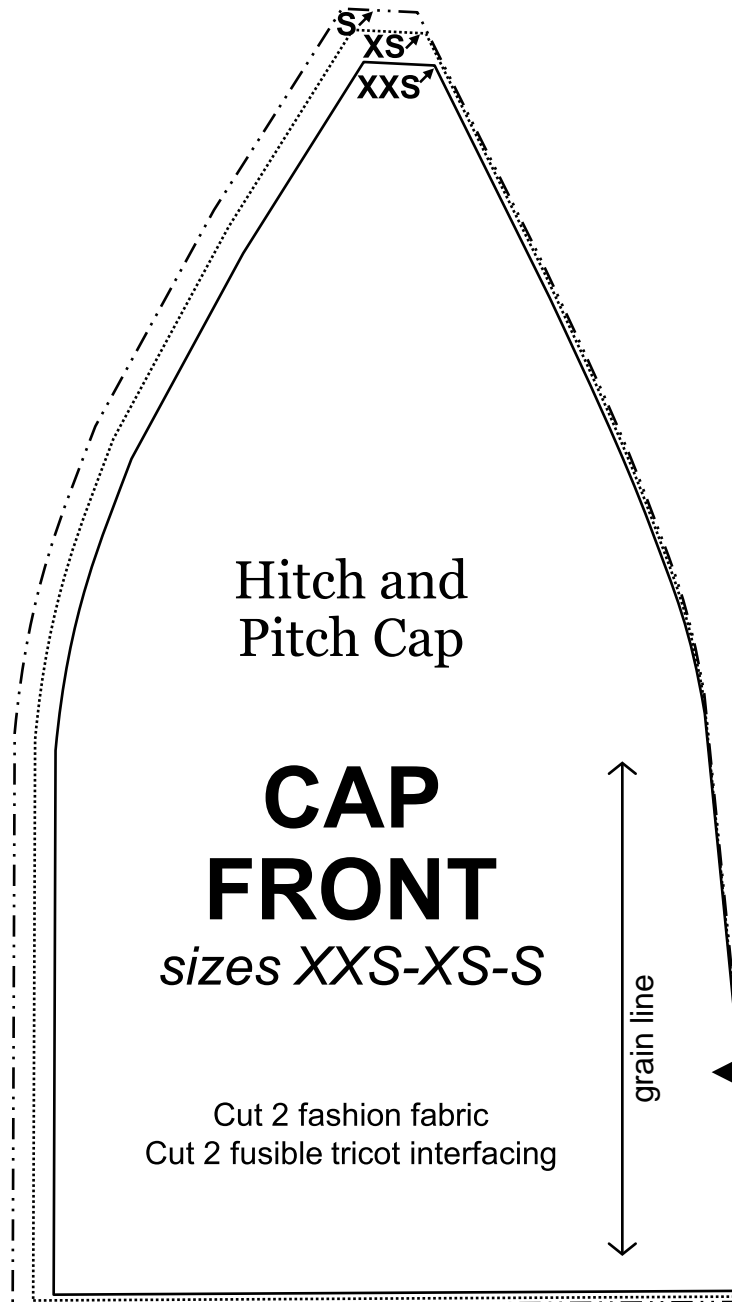
Hitch & Pitch Cap

Important note:

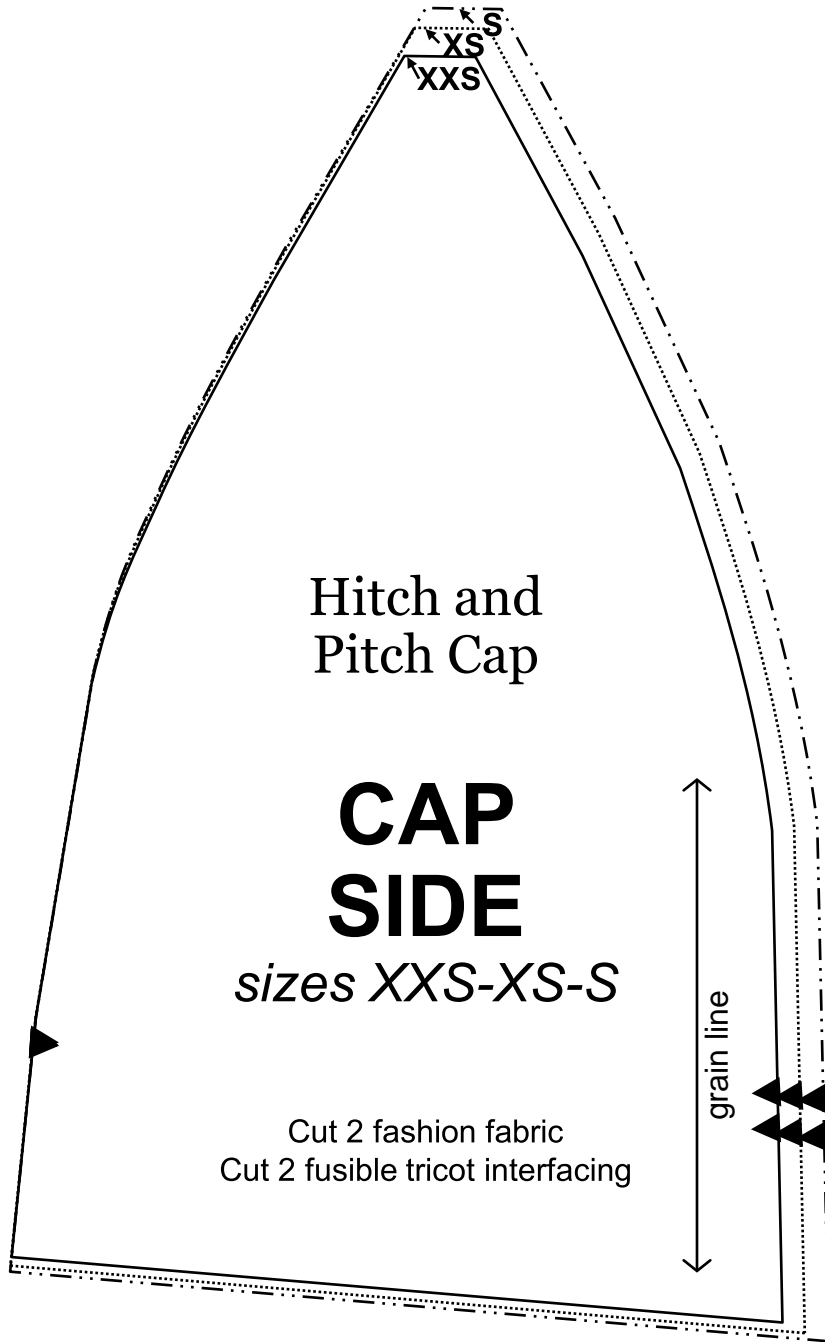
The pattern pieces are designed to be printed at 100%. Before printing the patterns, make sure that page scaling is set to none in Adobe Acrobat print window. To be sure that your patterns are going to print at the correct size, measure the box on the first pattern page. It should measure exactly 1 inch by 1 inch.

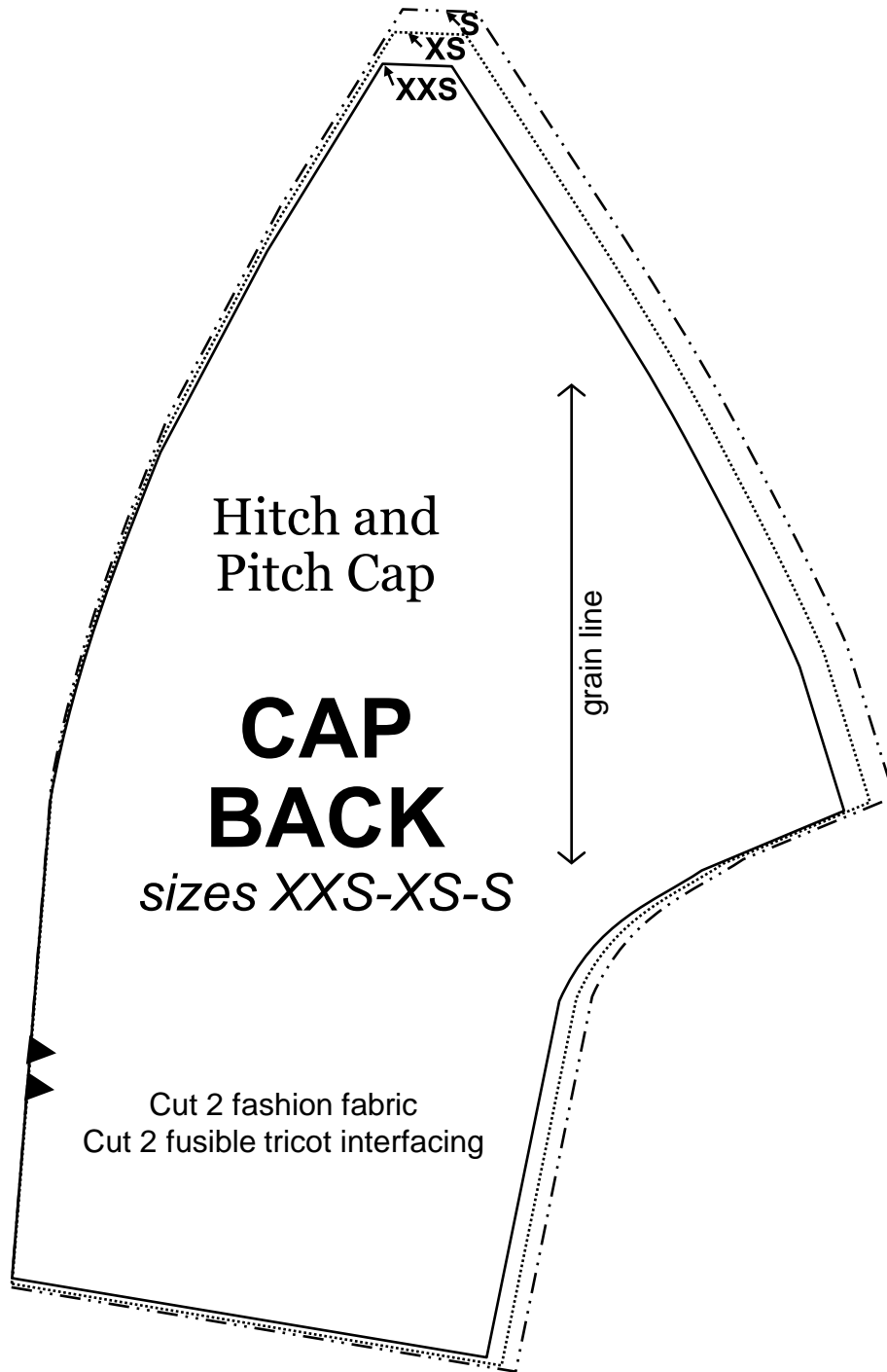


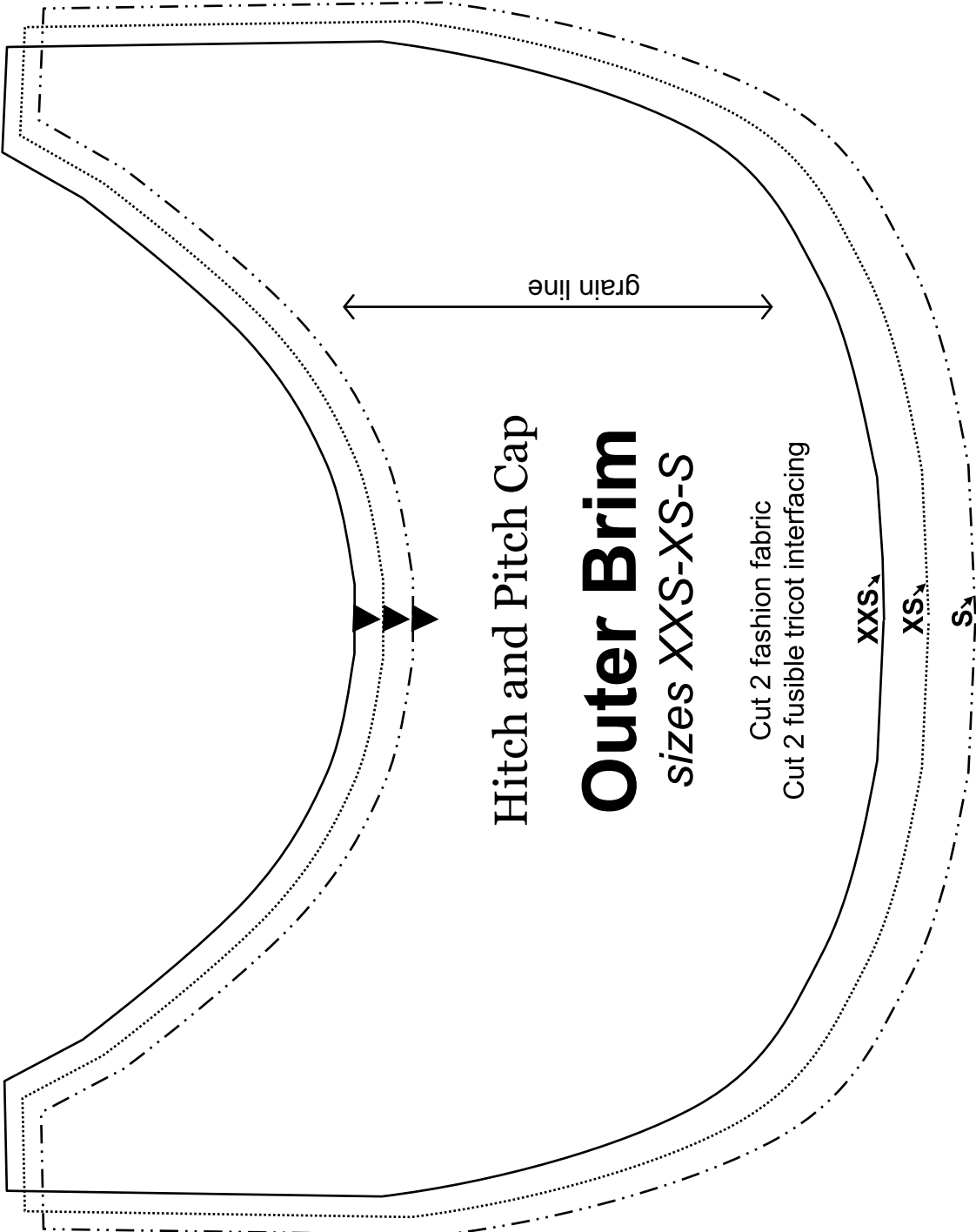
For sizes **XXS, XS, and X**: Print pages 2-7
For sizes **M, L, and XL**: Print pages 8-13



1 x 1







Hitch and Pitch Cap

Outer Brim

sizes XXS-XS-S

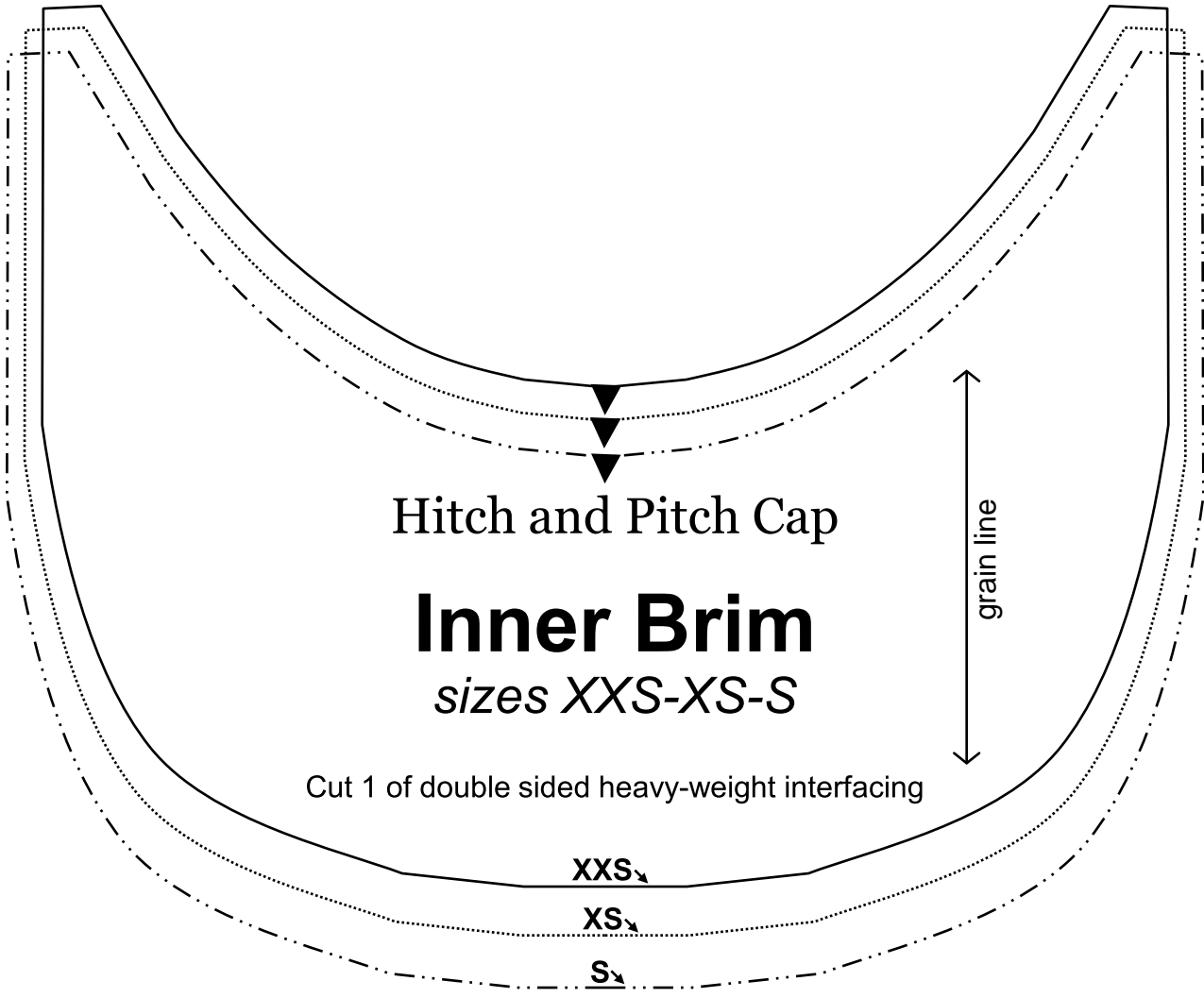
- Cut 2 fashion fabric
- Cut 2 fusible tricot interfacing

XXS

XS

S

grain line



Hitch and Pitch Cap

Inner Brim

sizes *XXS-XS-S*

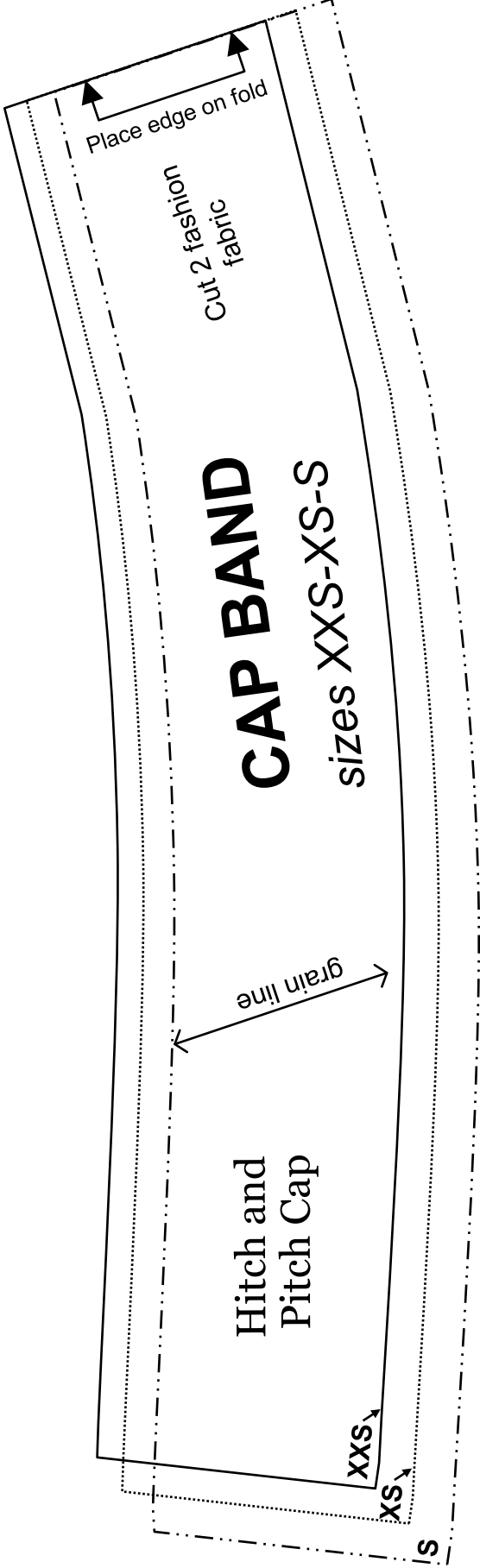
grain line

Cut 1 of double sided heavy-weight interfacing

XXS

XS

S



Place edge on fold

Cut 2 fashion fabric

CAP BAND

sizes XXS-XS-S

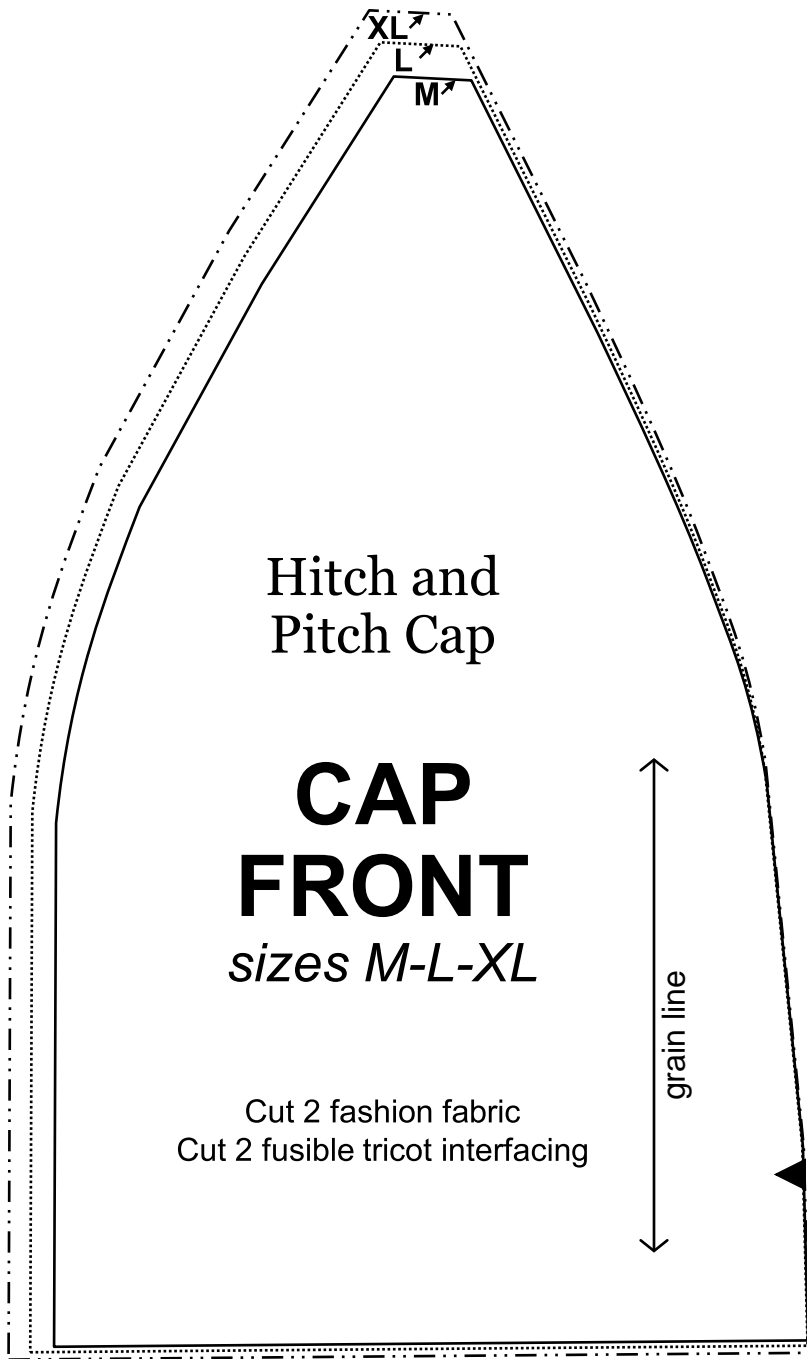
Hitch and Pitch Cap

grain line

XXS

XS

S



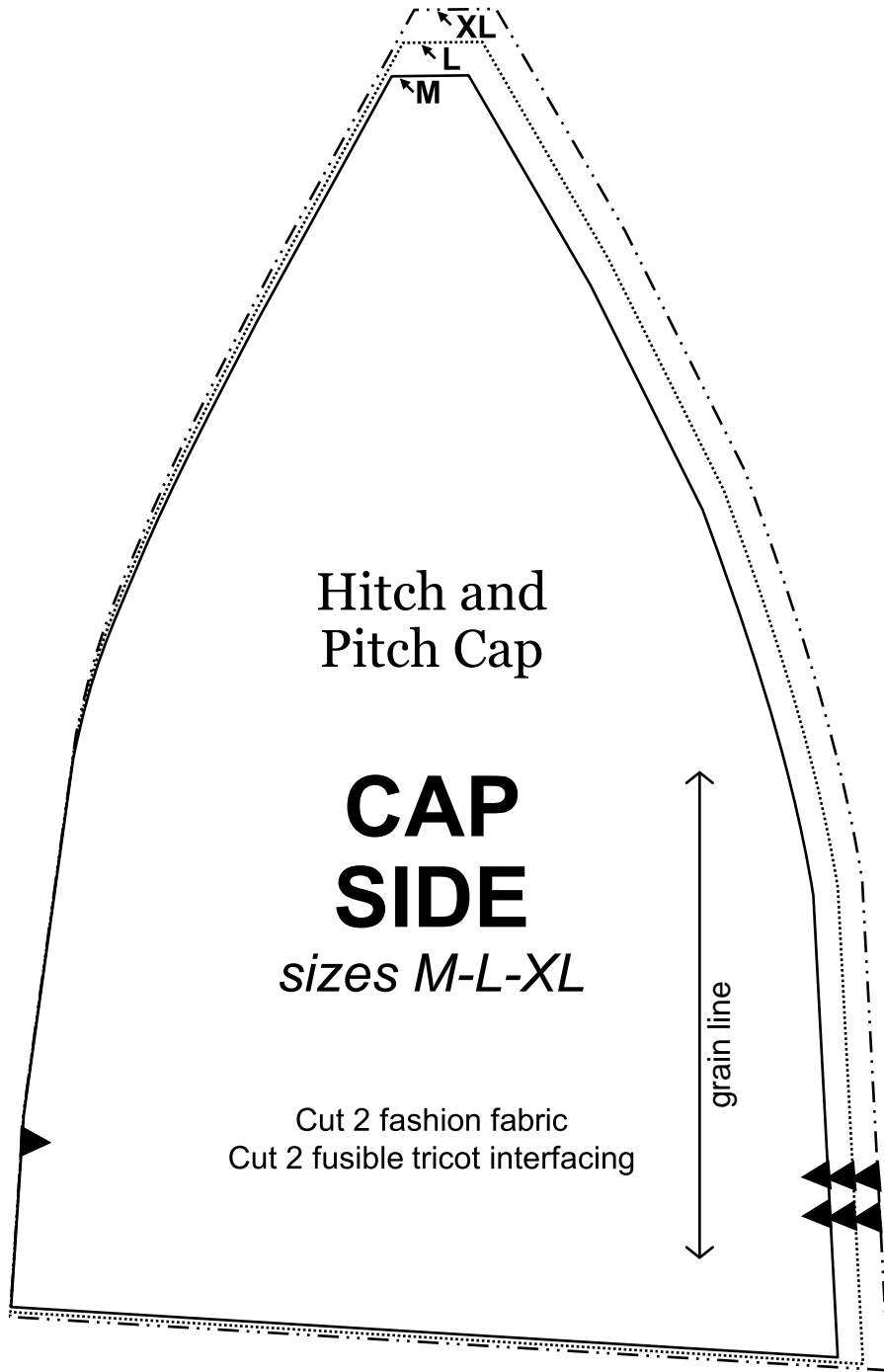
1 x 1

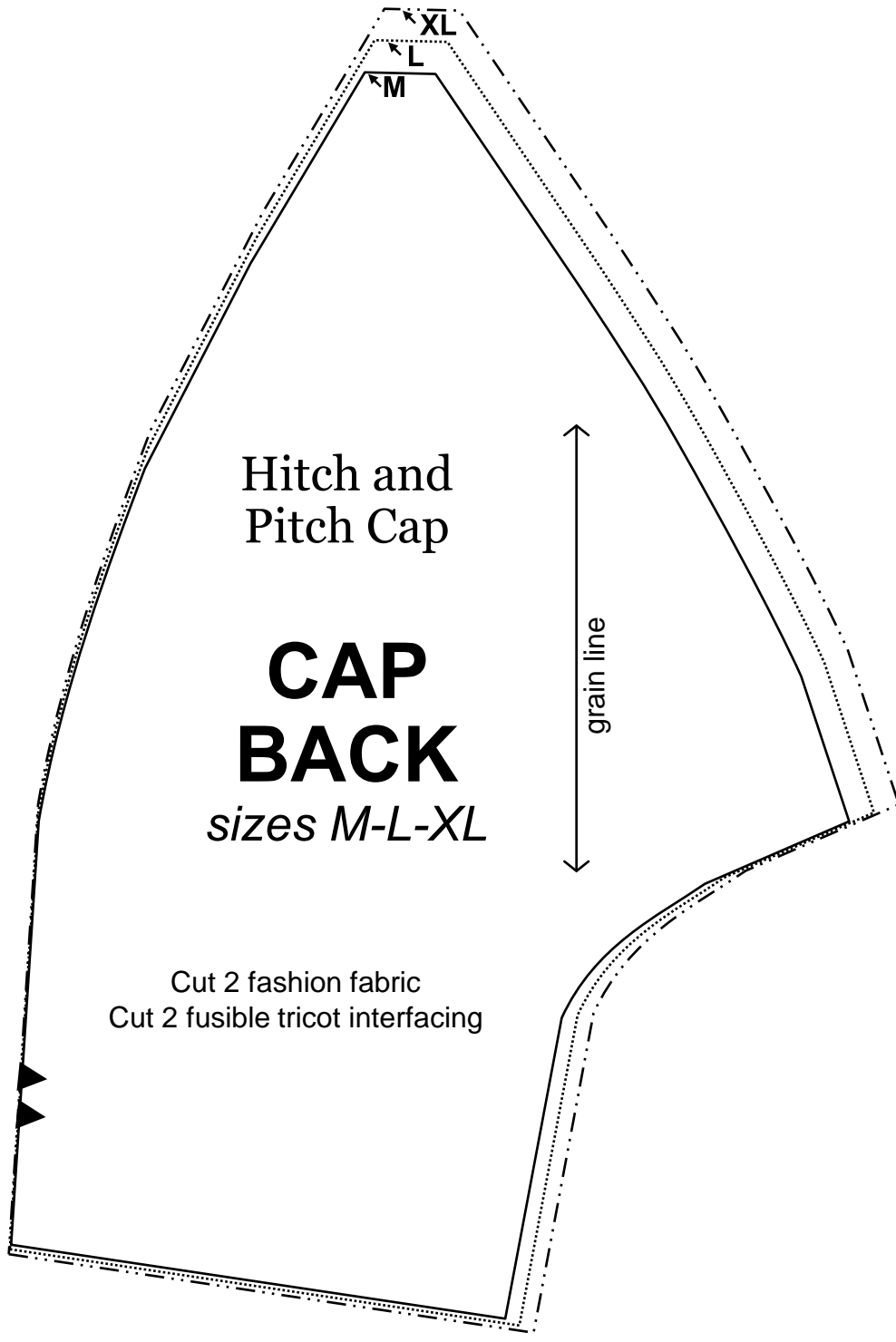
Hitch and
Pitch Cap

**CAP
FRONT**
sizes M-L-XL

Cut 2 fashion fabric
Cut 2 fusible tricot interfacing

grain line





XL

L

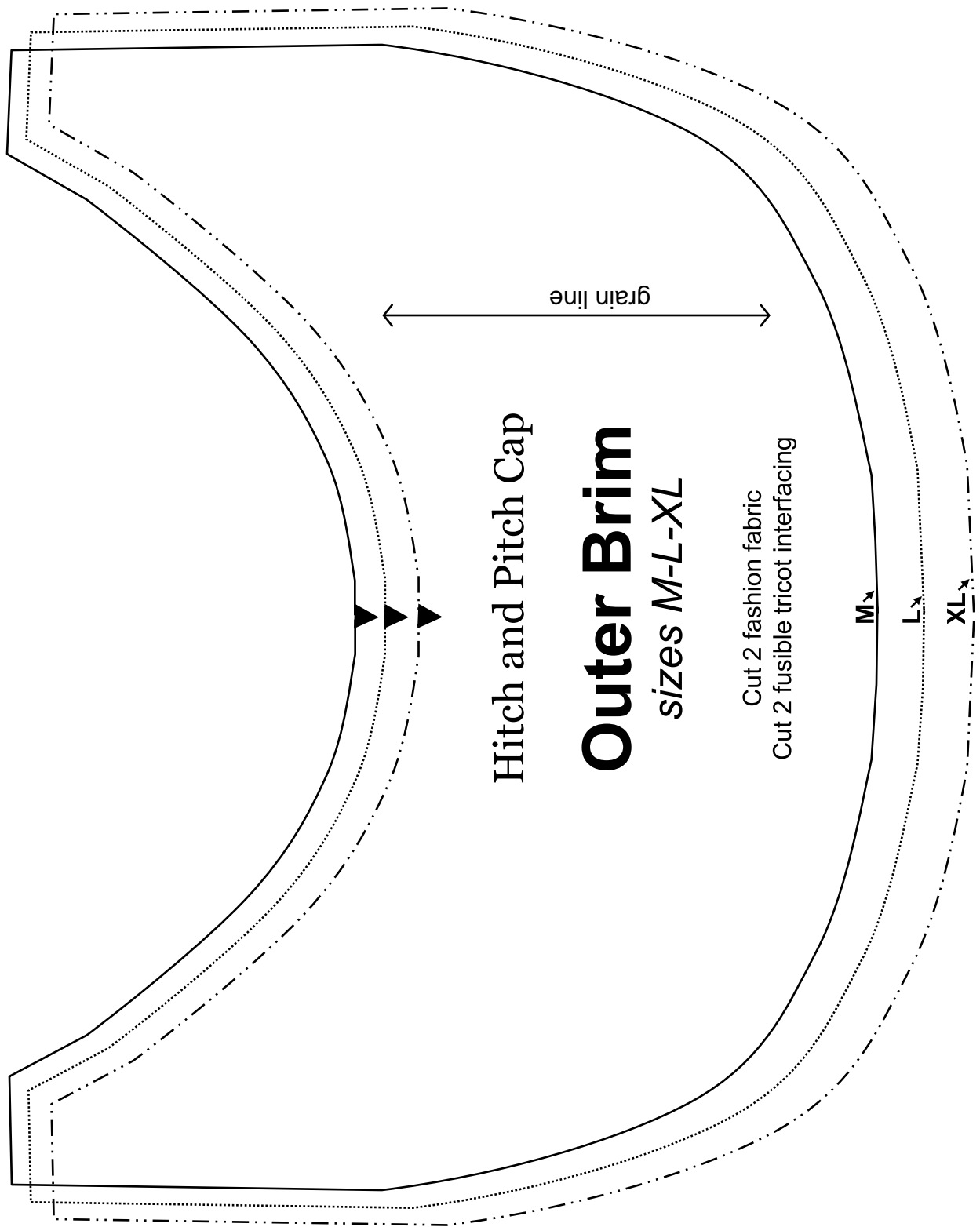
M

Hitch and
Pitch Cap

**CAP
BACK**
sizes M-L-XL

grain line

Cut 2 fashion fabric
Cut 2 fusible tricot interfacing



Hitch and Pitch Cap

Outer Brim

sizes *M-L-XL*

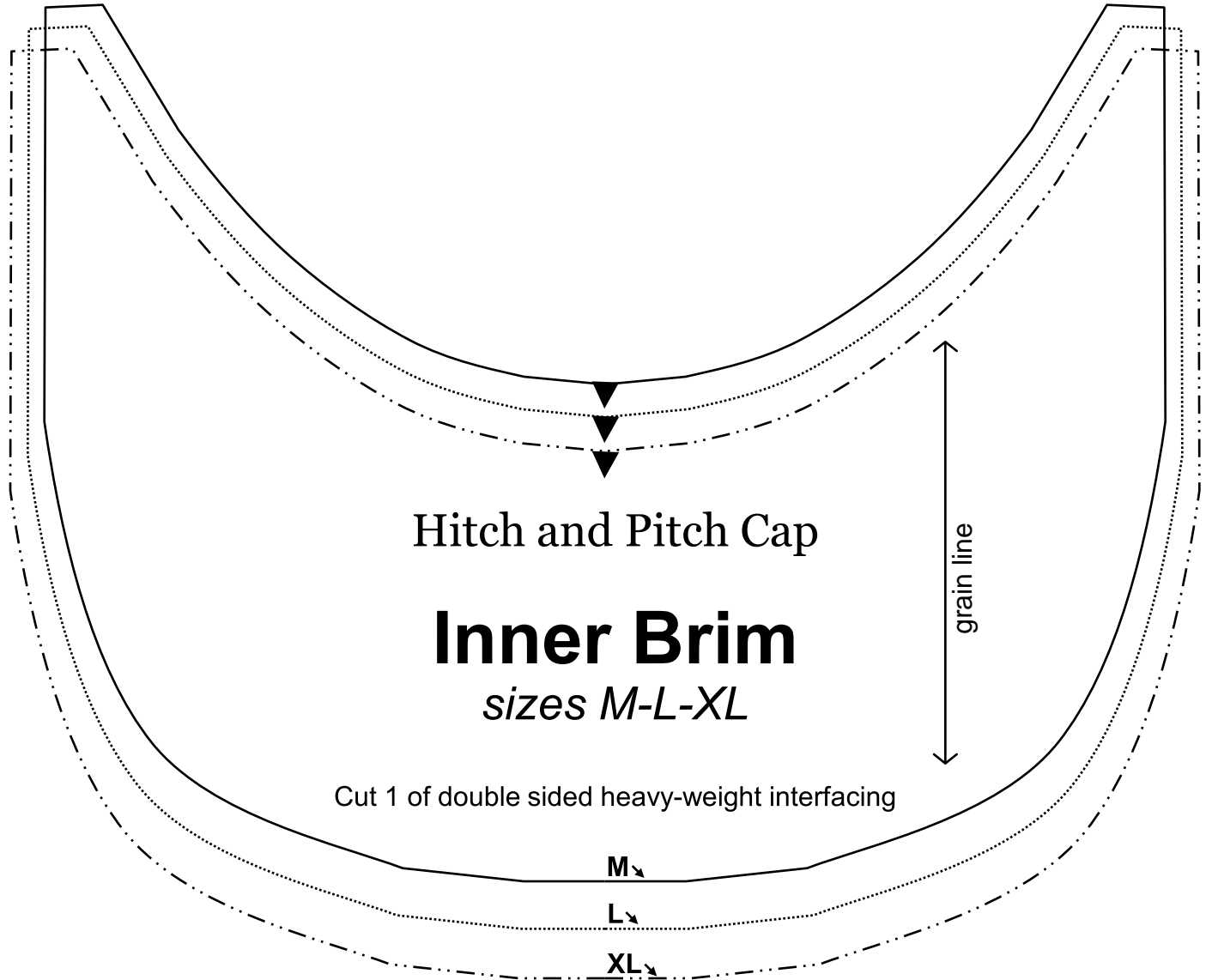
- Cut 2 fashion fabric
- Cut 2 fusible tricot interfacing

grain line

M

L

XL



Hitch and Pitch Cap

Inner Brim

sizes M-L-XL

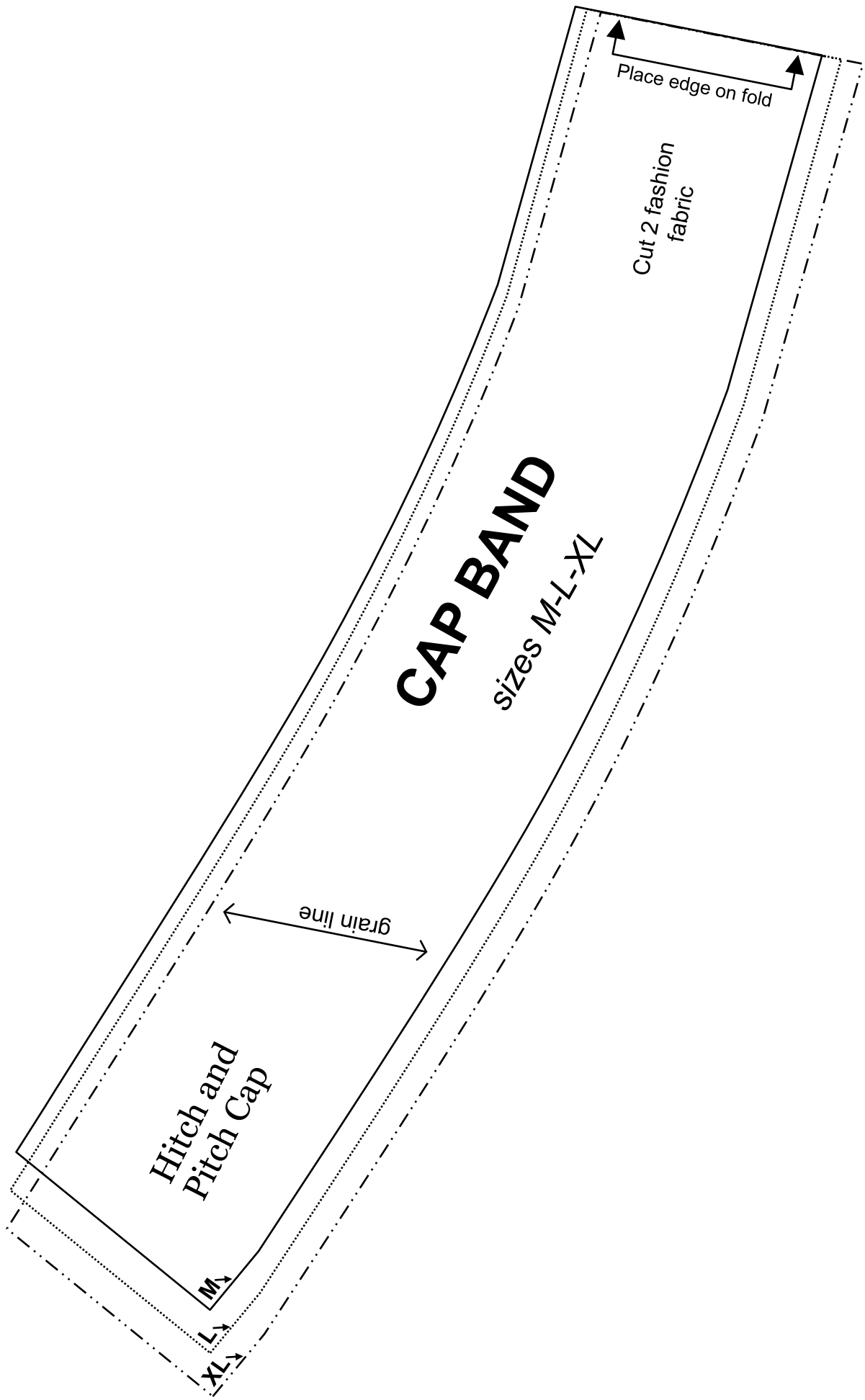
grain line

Cut 1 of double sided heavy-weight interfacing

M

L

XL



CAP BAND

sizes M-L-XL

Place edge on fold

Cut 2 fashion fabric

grain line

Hitch and Pitch Cap

M

L

XL