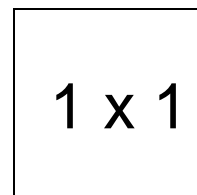


Heloise Floral Hat

Important note:

The pattern pieces are designed to be printed at 100%. Before printing the patterns, make sure that page scaling is set to none in Adobe Acrobat print window. To be sure that your patterns are going to print at the correct size, measure the box on the first pattern page. It should measure exactly 1 inch by 1 inch.



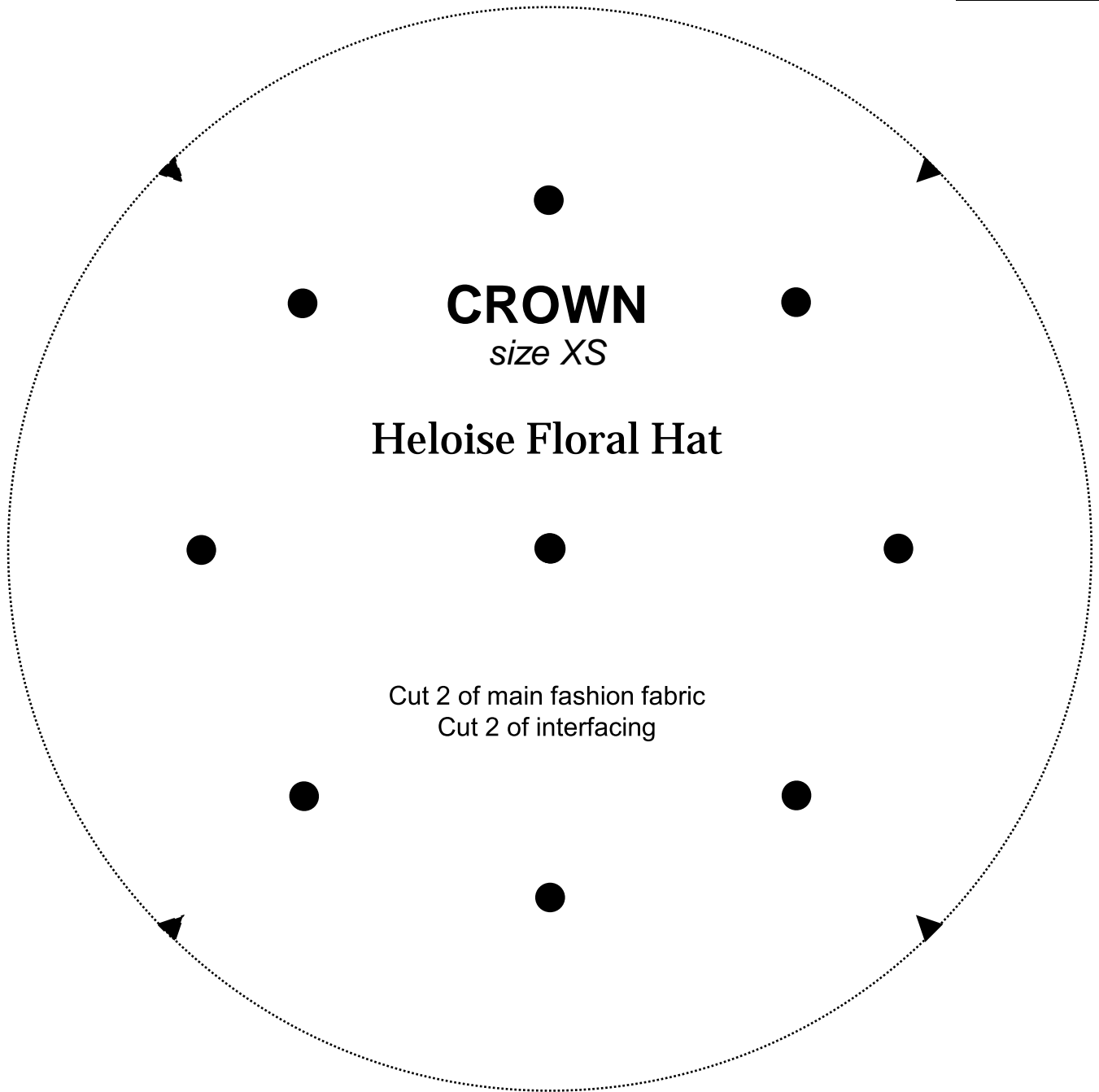
For sizes XS: Print pages 2-6

For sizes S: Print pages 7-11

For sizes M: Print pages 12-16

For sizes L: Print pages 17-21

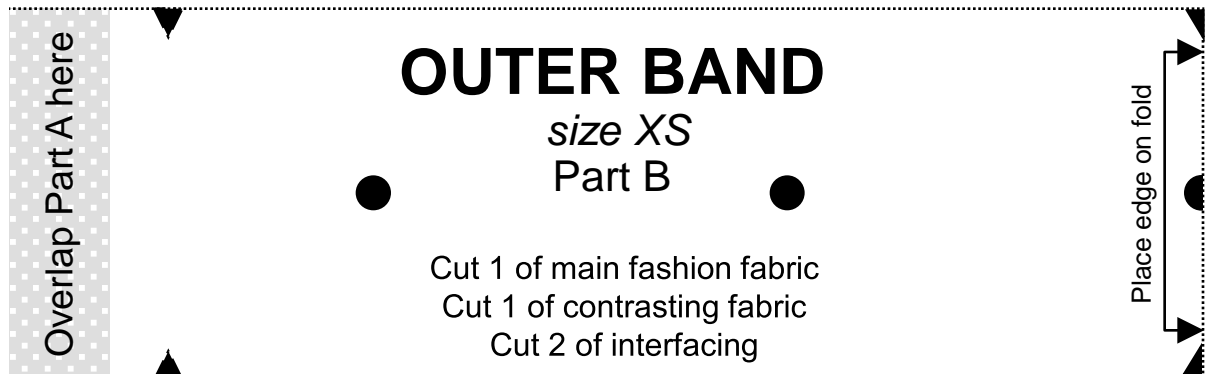
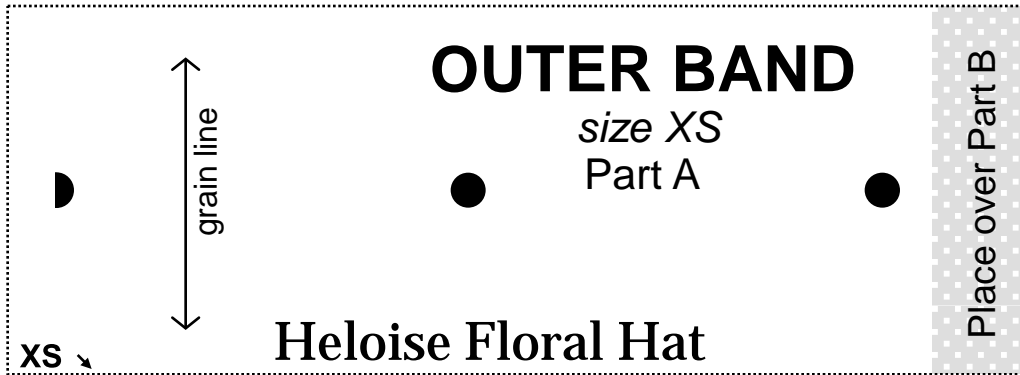
1 x 1

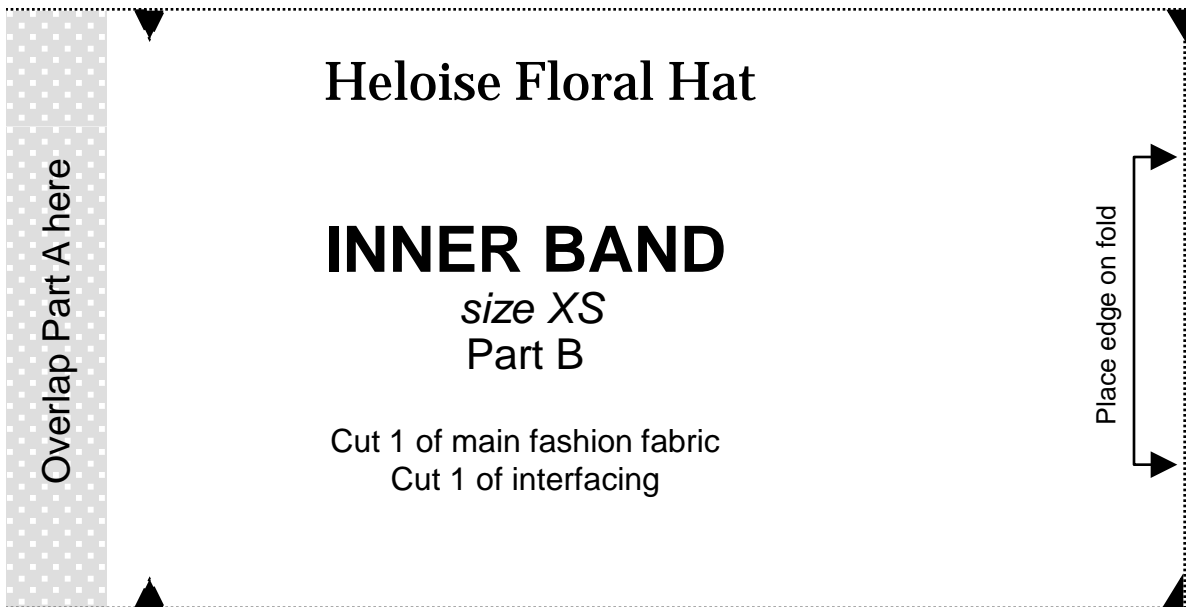
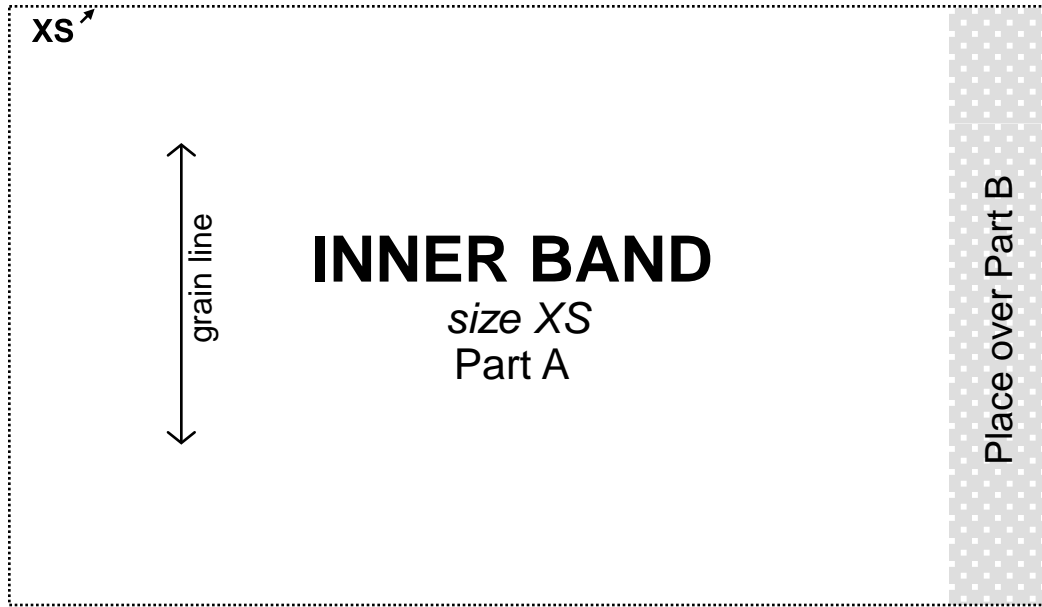


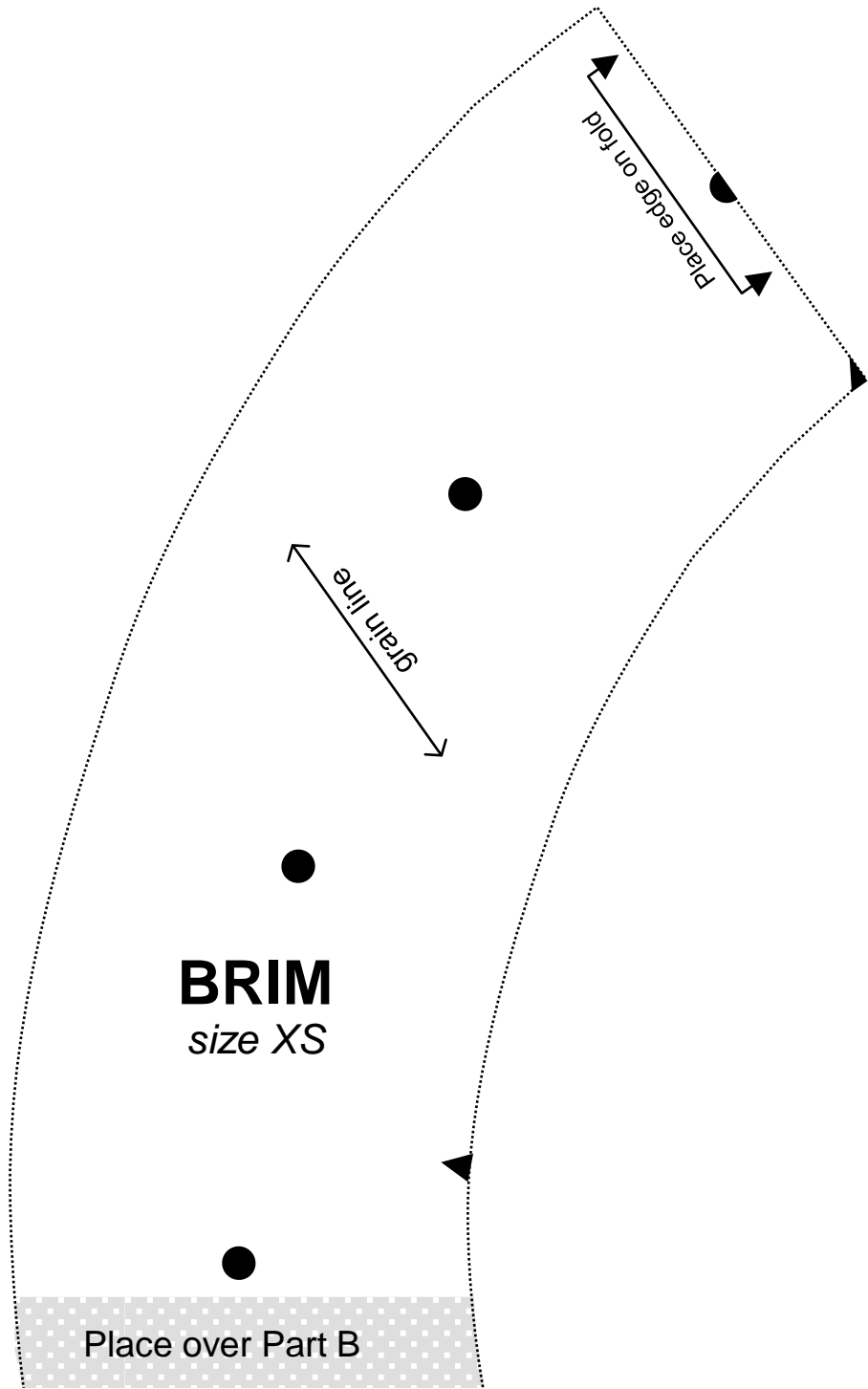
CROWN
size XS

Heloise Floral Hat

Cut 2 of main fashion fabric
Cut 2 of interfacing





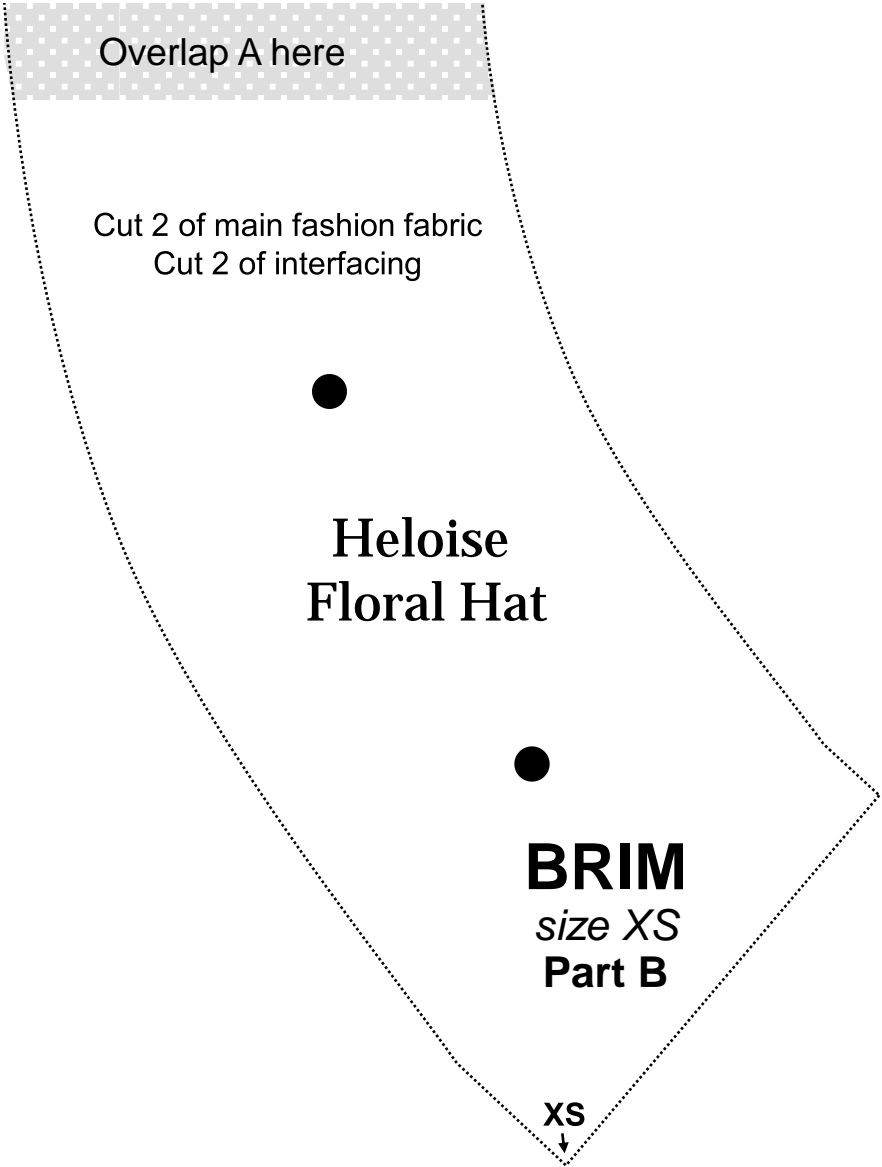


BRIM
size XS

Place over Part B

Place edge on fold

Grain line



Overlap A here

Cut 2 of main fashion fabric
Cut 2 of interfacing



Heloise Floral Hat



BRIM
size XS
Part B

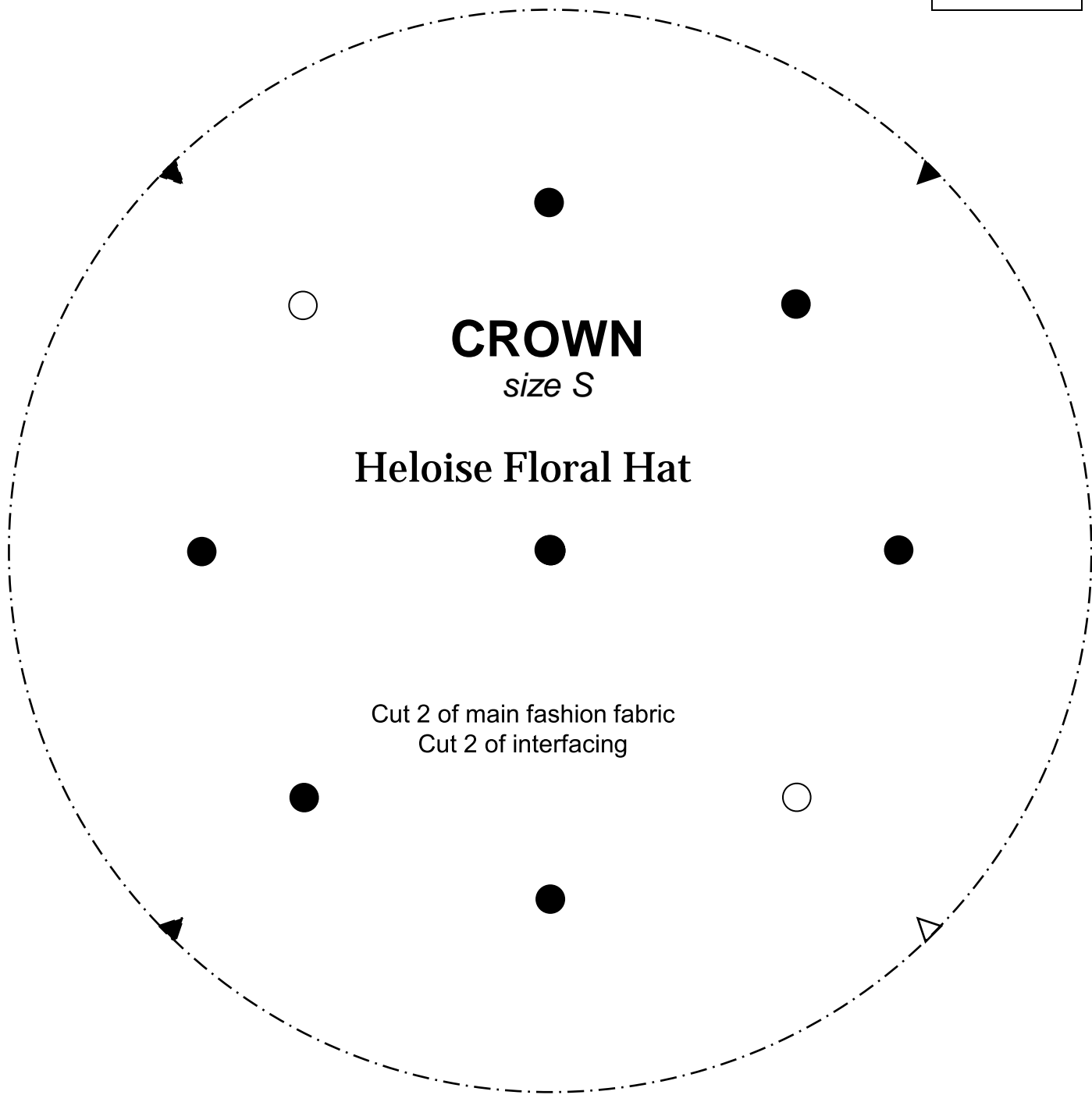
XS
↓

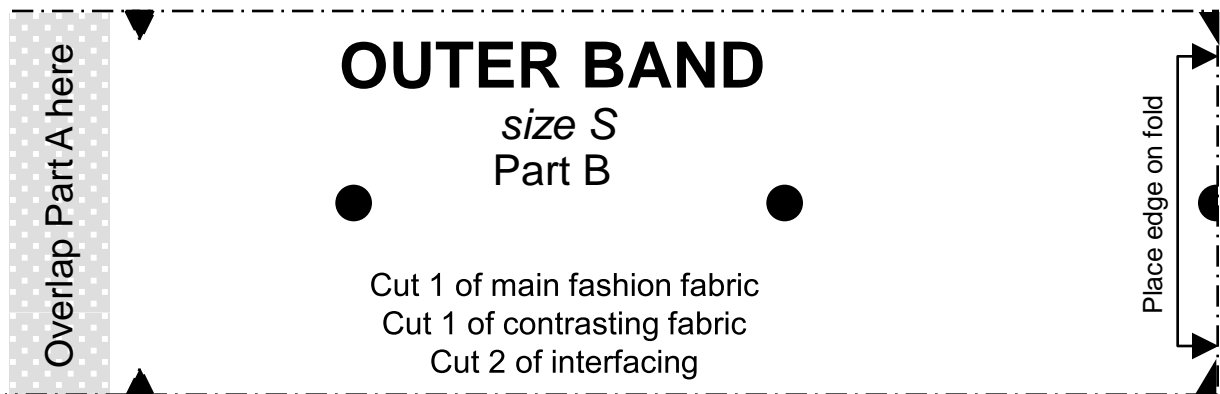
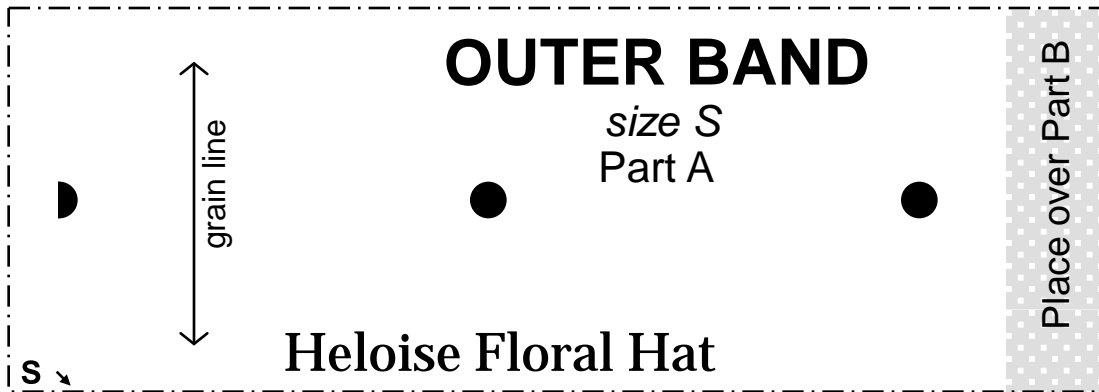
1 x 1

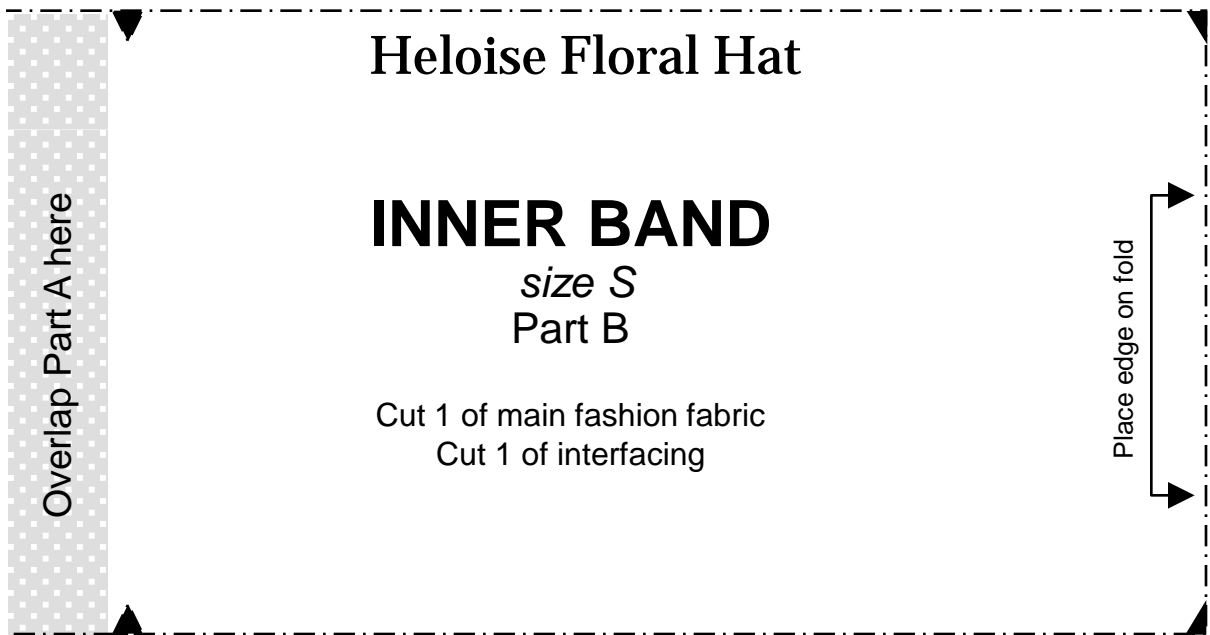
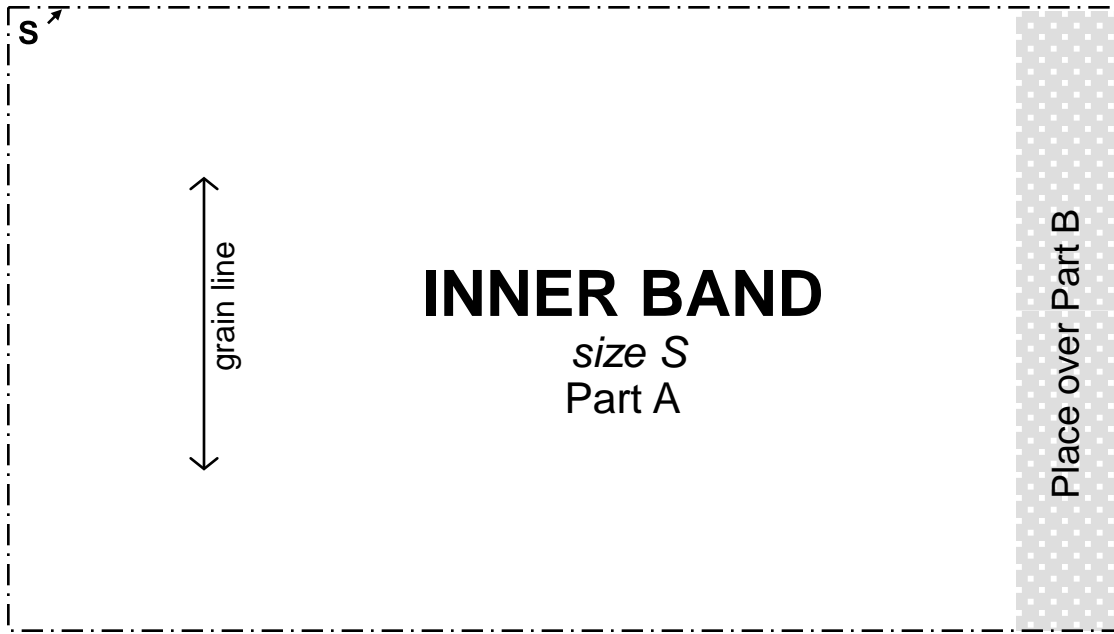
CROWN
size S

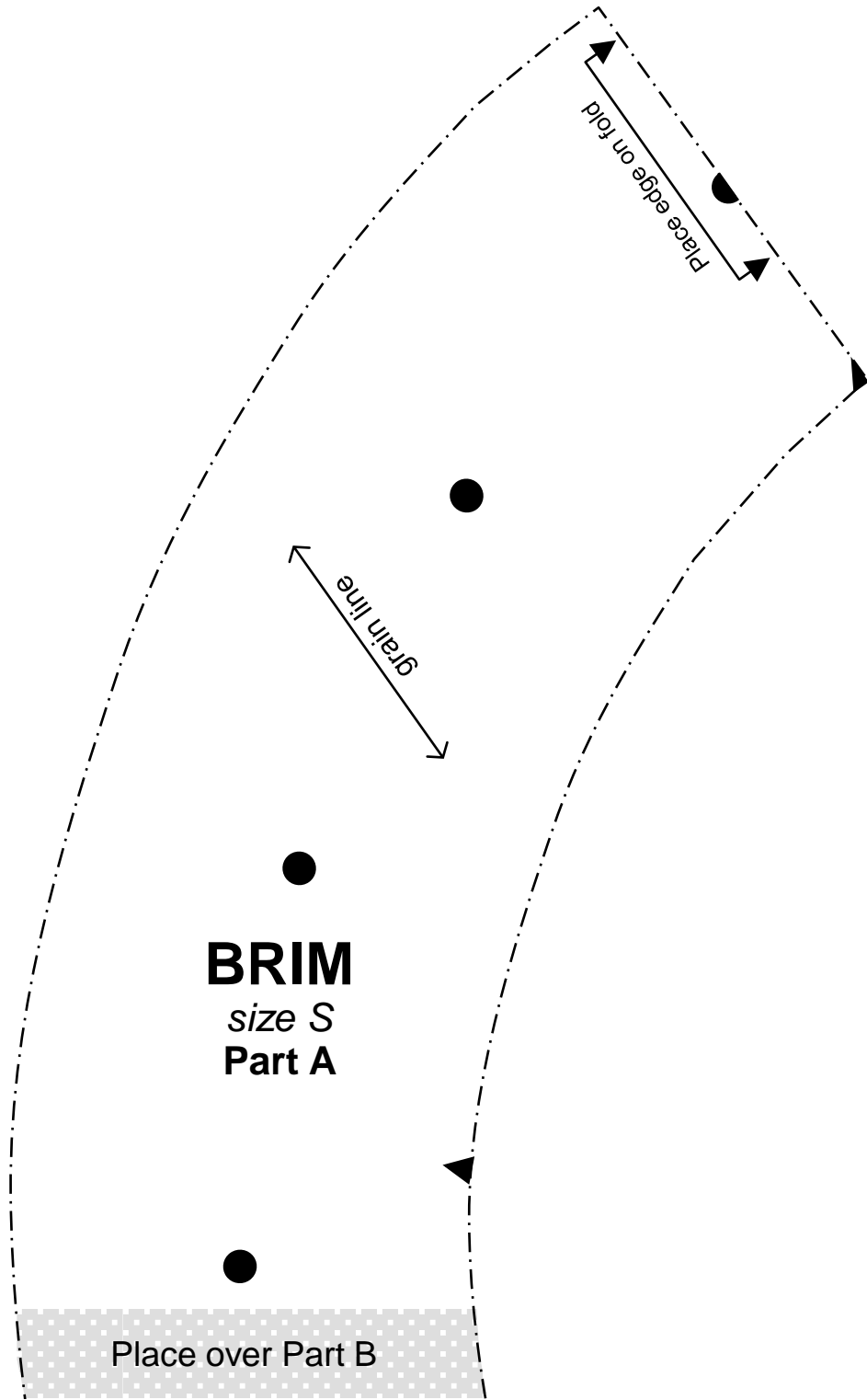
Heloise Floral Hat

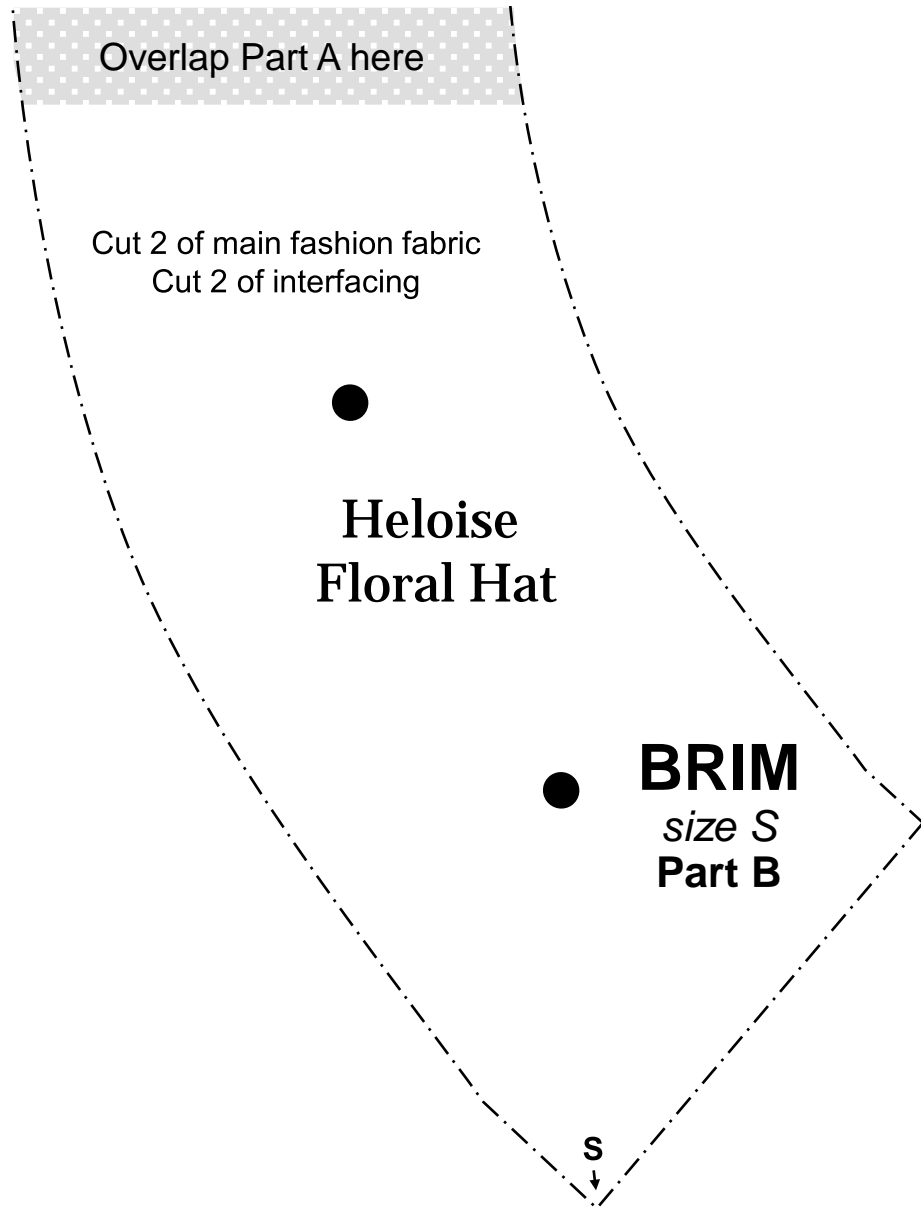
Cut 2 of main fashion fabric
Cut 2 of interfacing









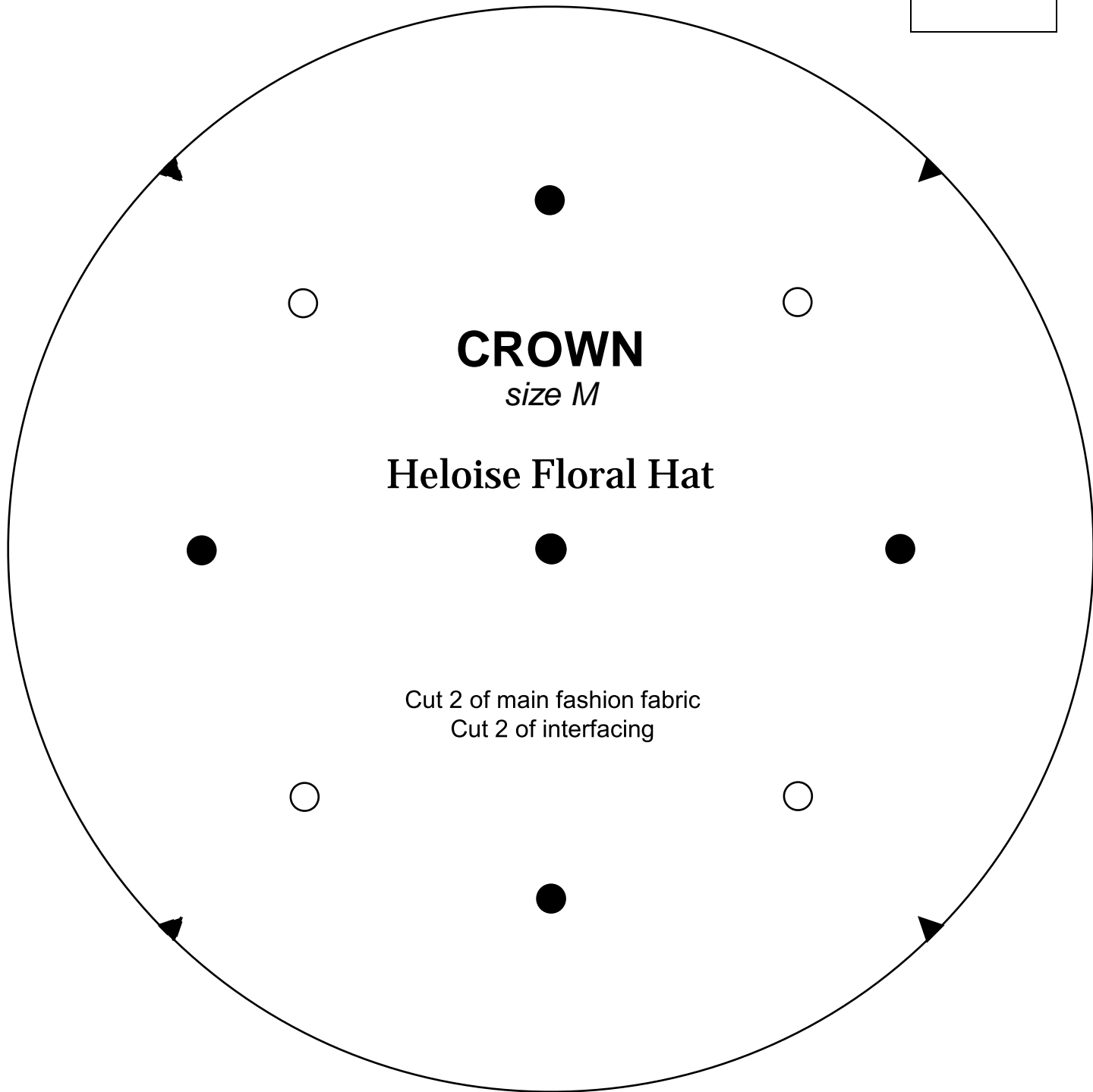


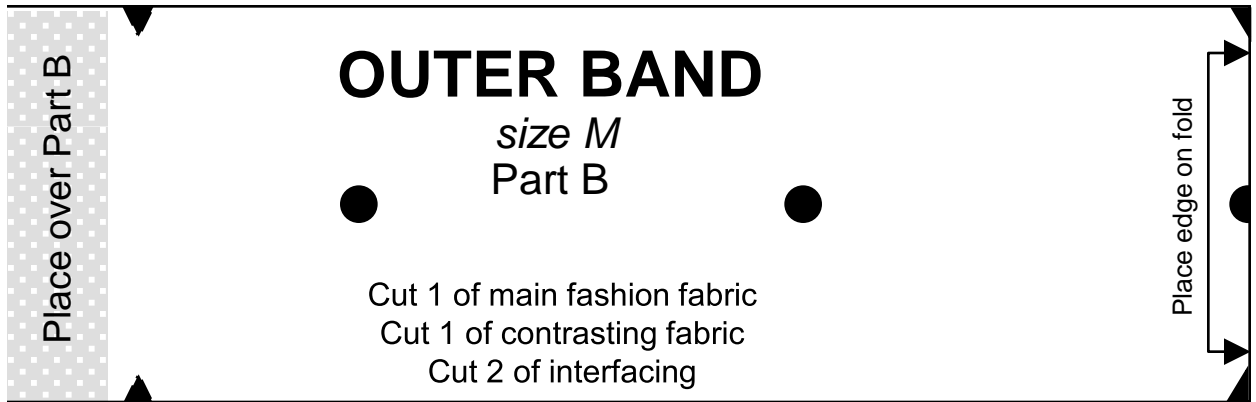
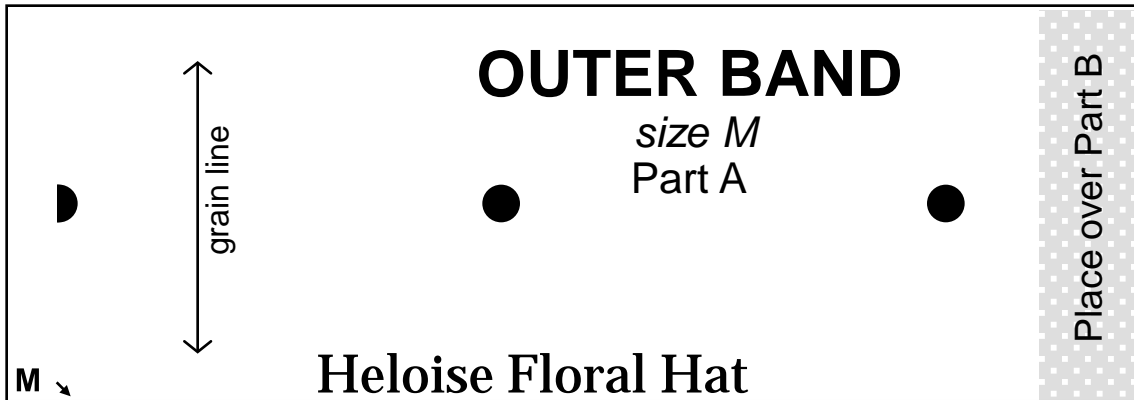
1 x 1

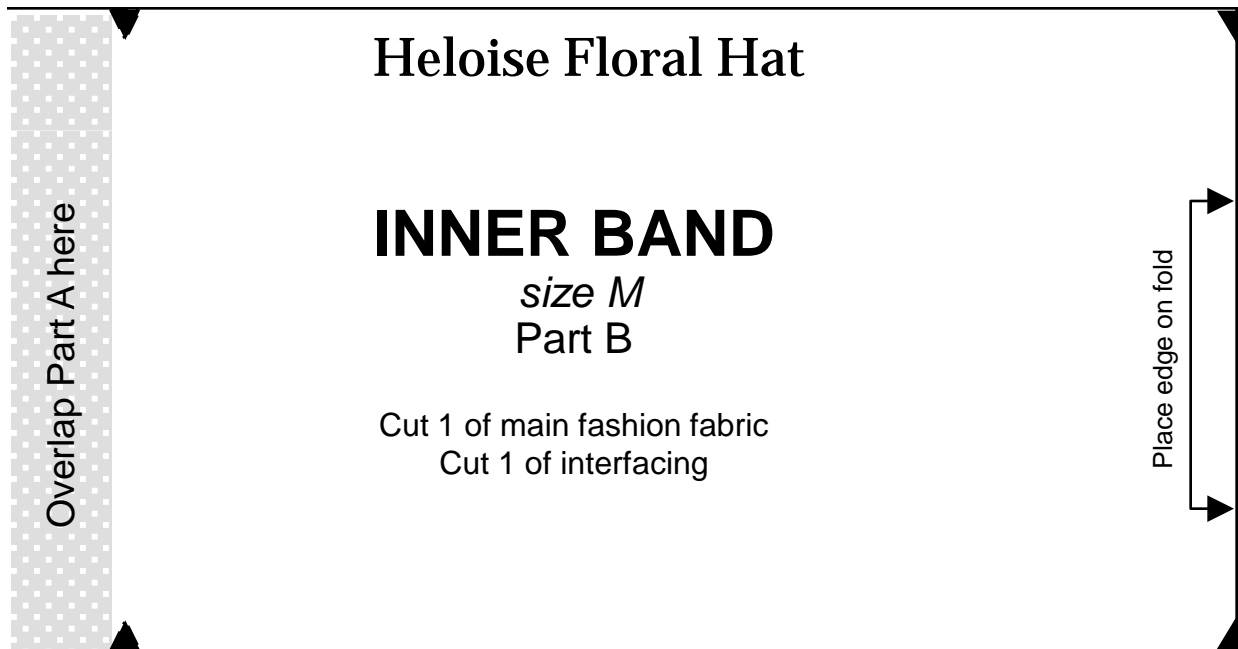
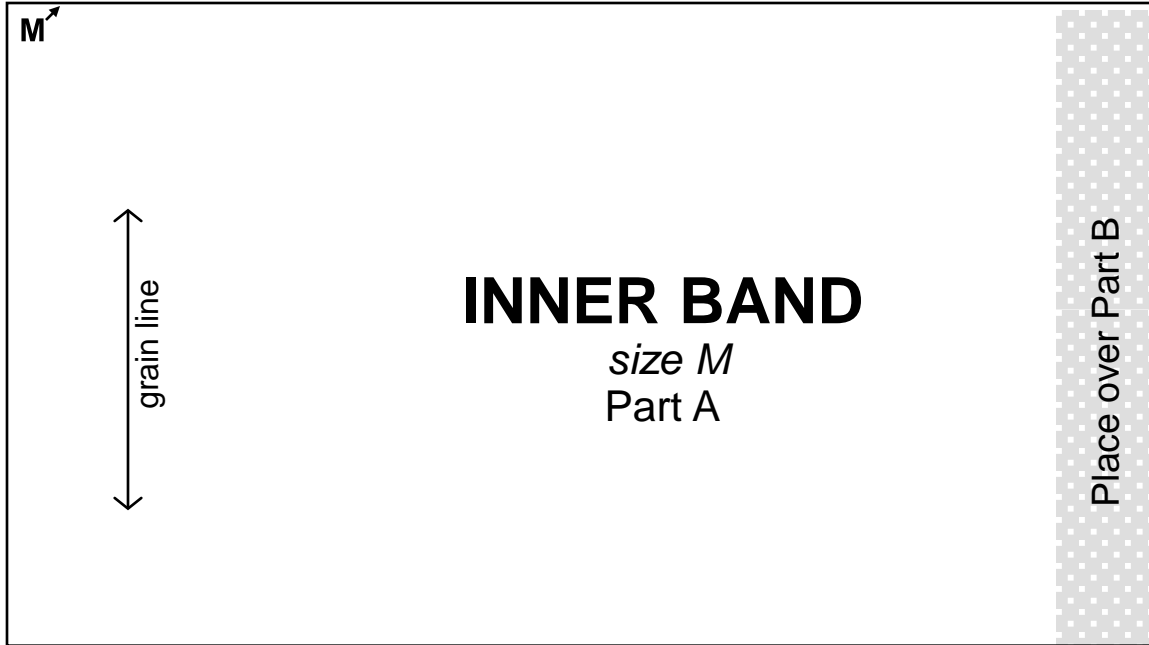
CROWN
size M

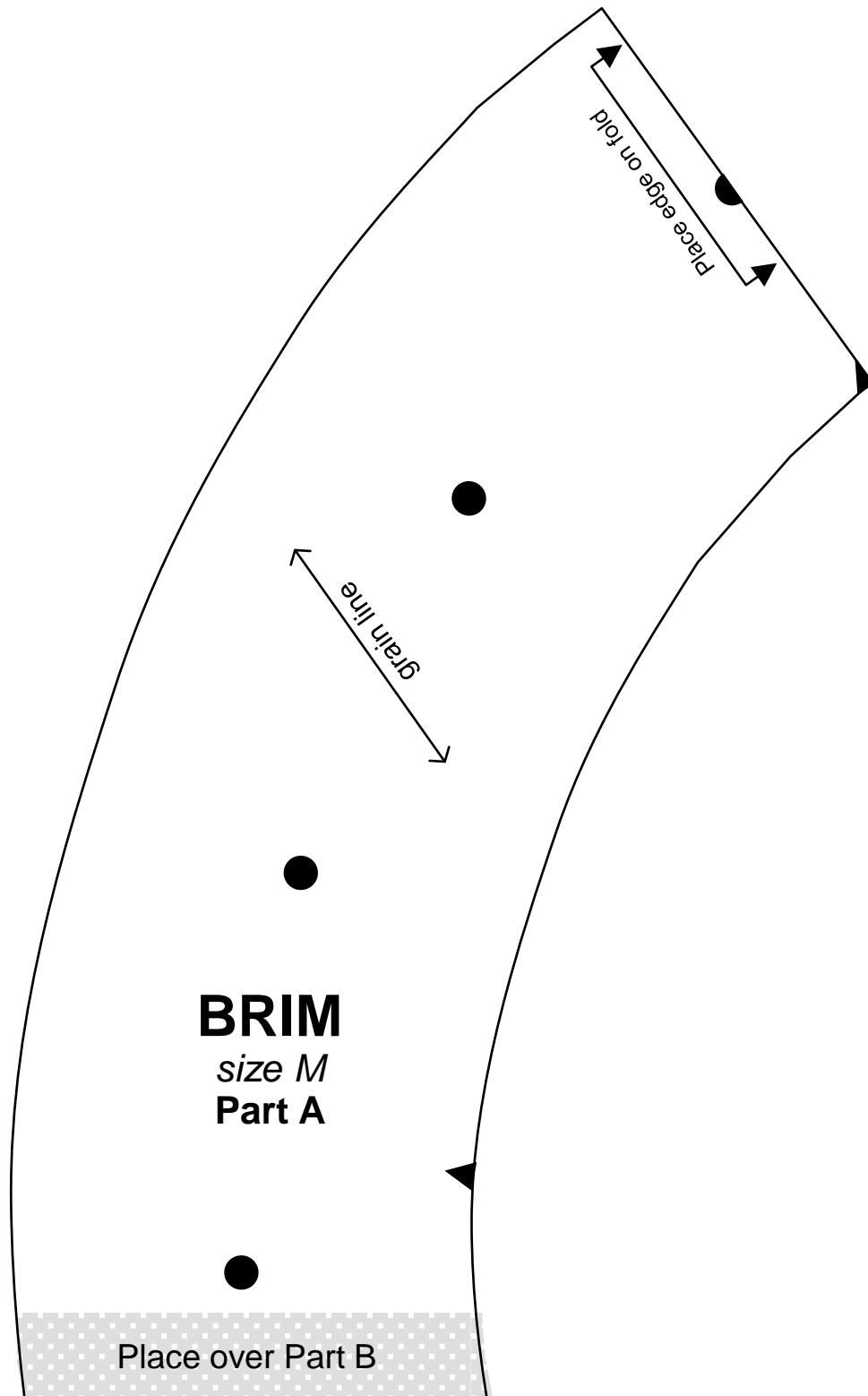
Heloise Floral Hat

Cut 2 of main fashion fabric
Cut 2 of interfacing



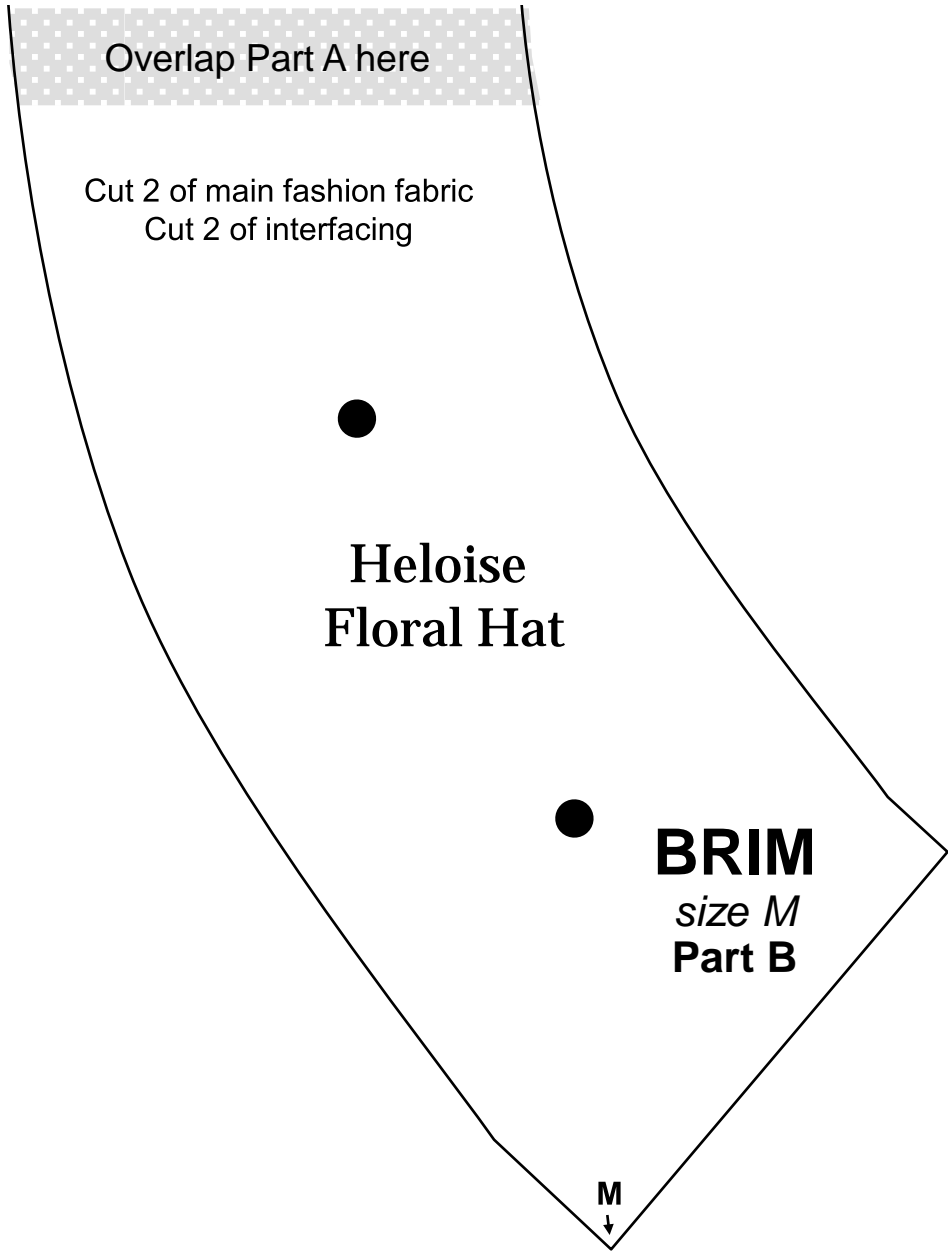






BRIM
size M
Part A

Place over Part B



1 x 1

CROWN
size L

Heloise Floral Hat

Cut 2 of main fashion fabric
Cut 2 of interfacing

