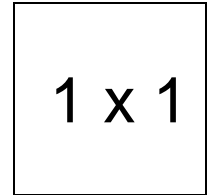


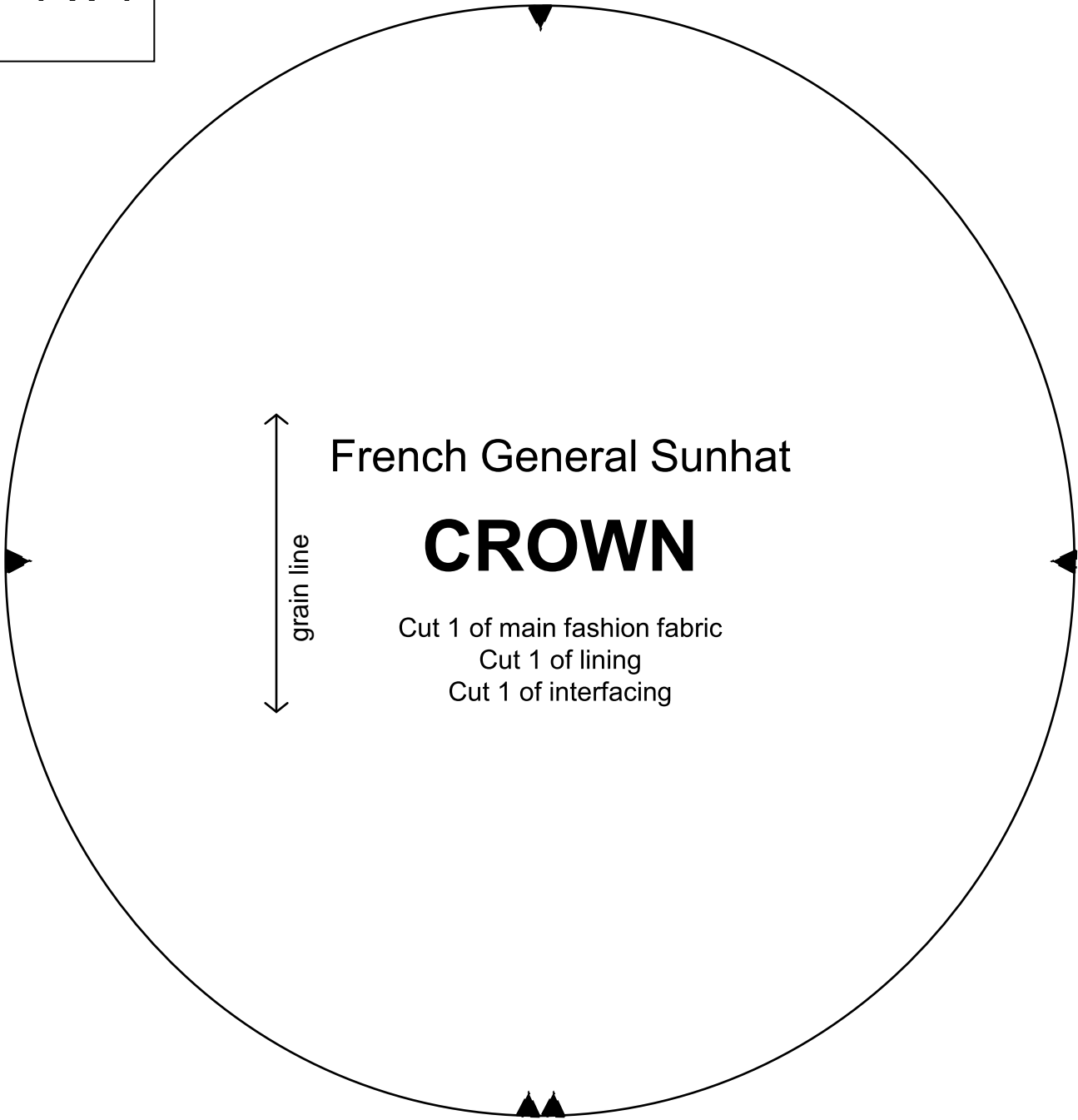
# French General Sunhat

## Important note:

The pattern pieces are designed to be printed at 100%. Before printing the patterns, make sure that page scaling is set to none in Adobe Acrobat print window. To be sure that your patterns are going to print at the correct size, measure the box on the first pattern page. It should measure exactly 1 inch by 1 inch.



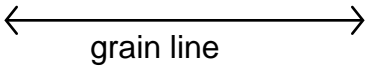
1 x 1



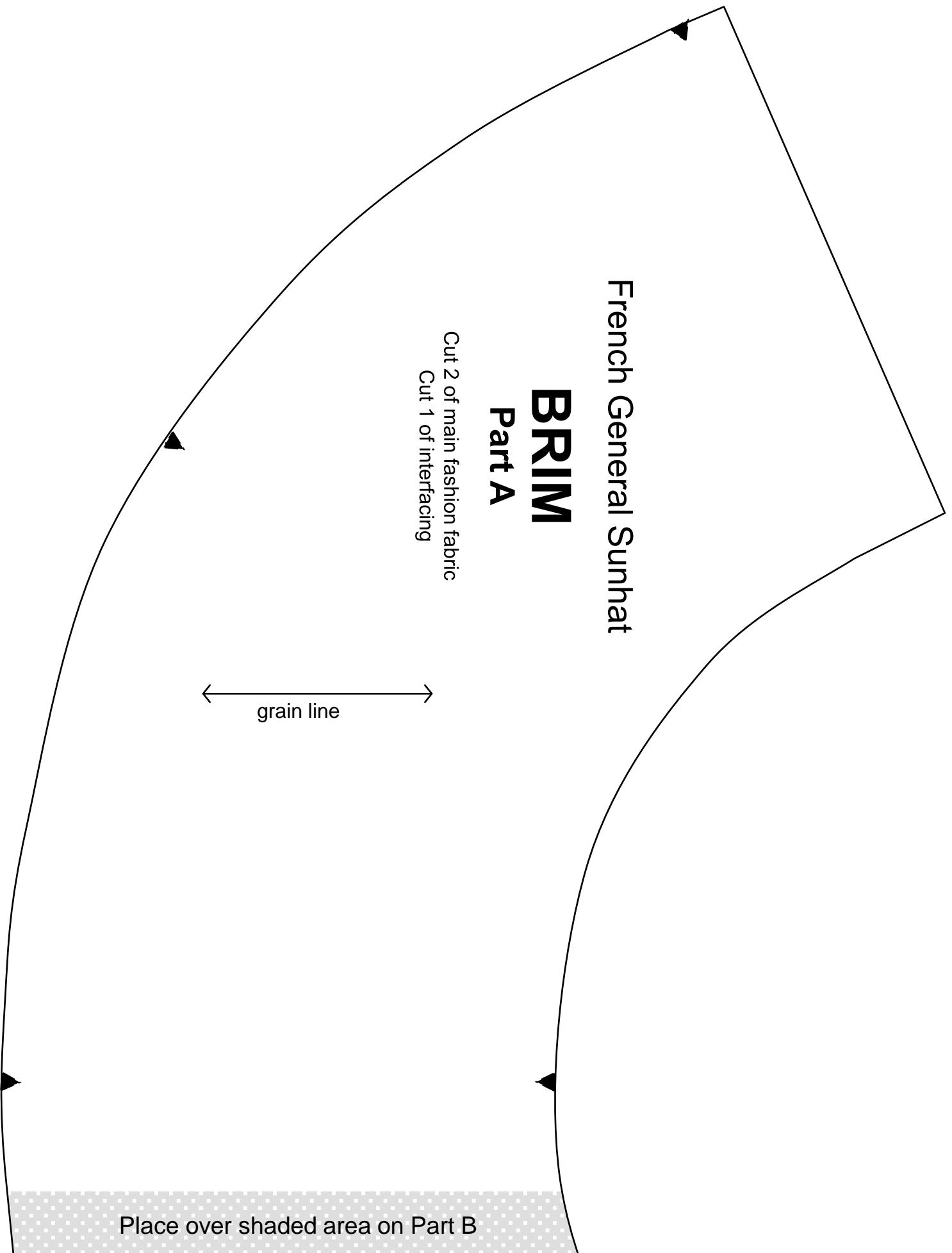
French General Sunhat

# BRIM Part A

Cut 2 of main fashion fabric  
Cut 1 of interfacing



Place over shaded area on Part B

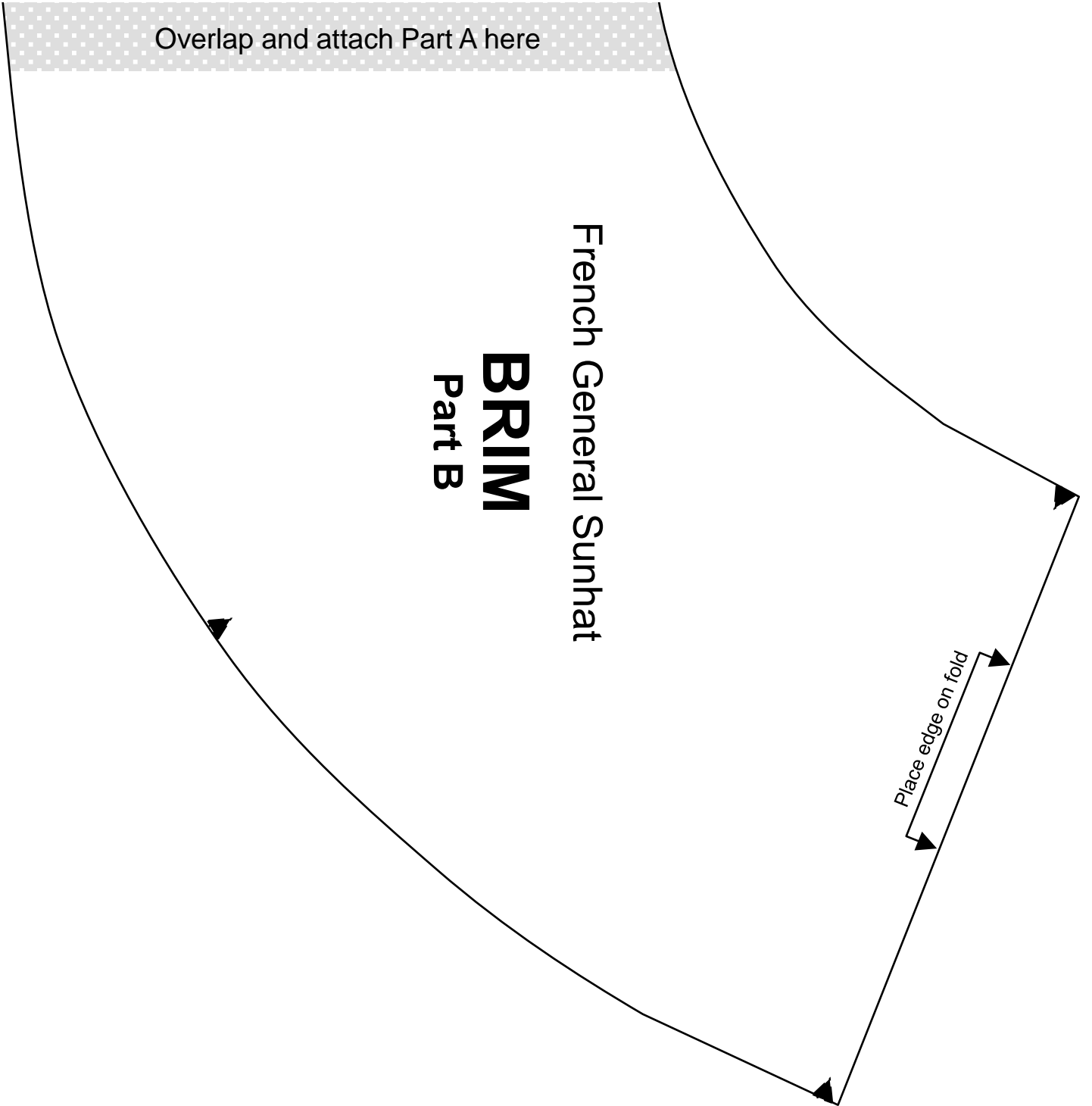


Overlap and attach Part A here

French General Sunhat

**BRIM**  
Part B

Place edge on fold



French General Sunhat  
**UPPER BAND**  
Part A

Cut 1 of main fashion fabric  
Cut 1 of lining  
Cut 1 of interfacing

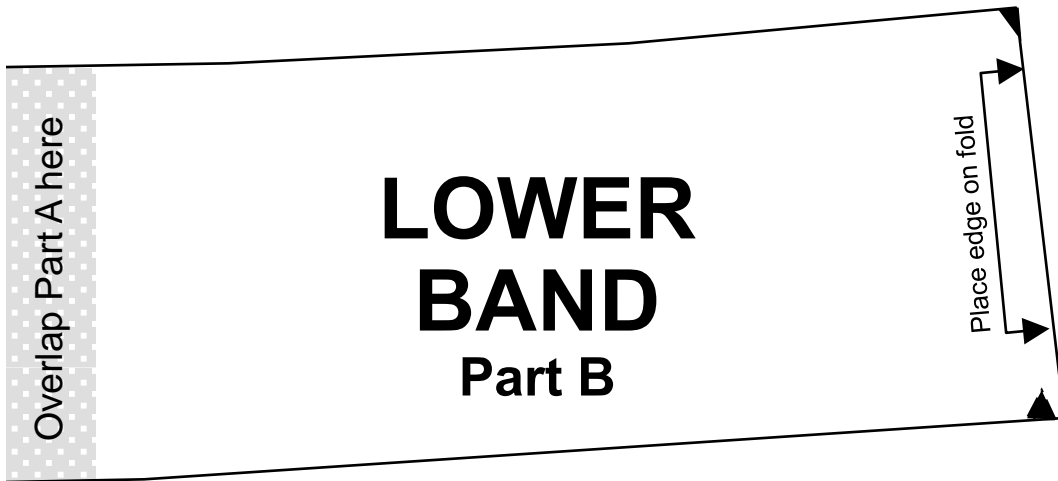
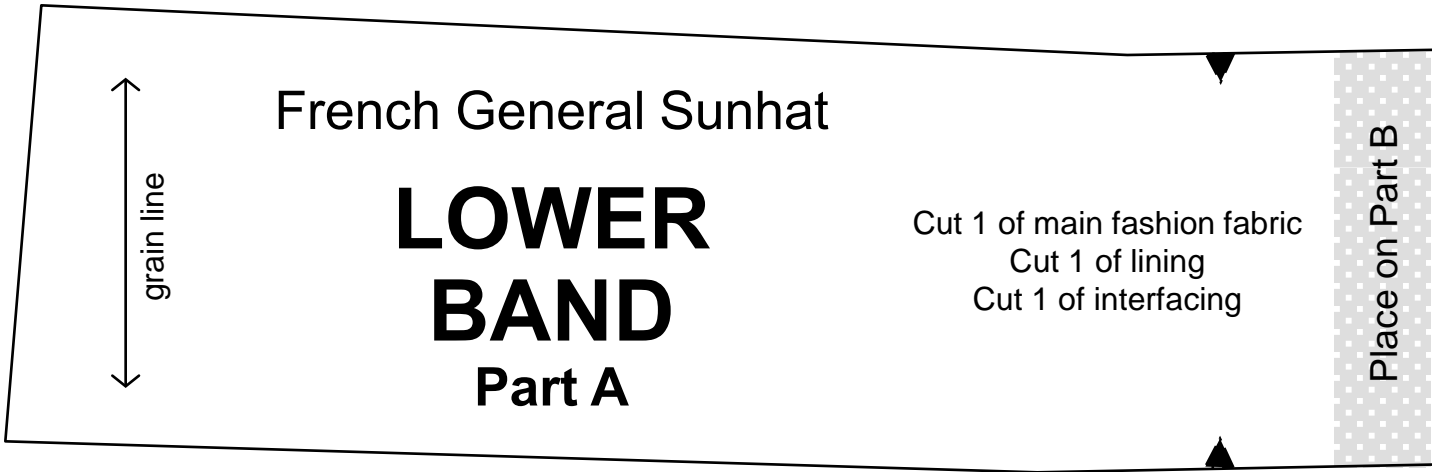
grain line

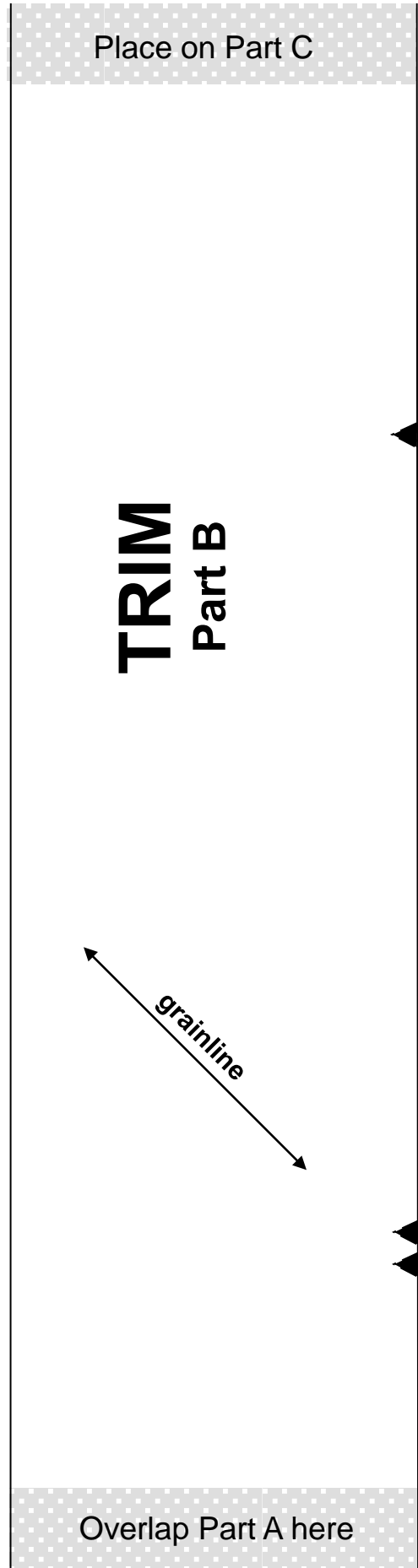
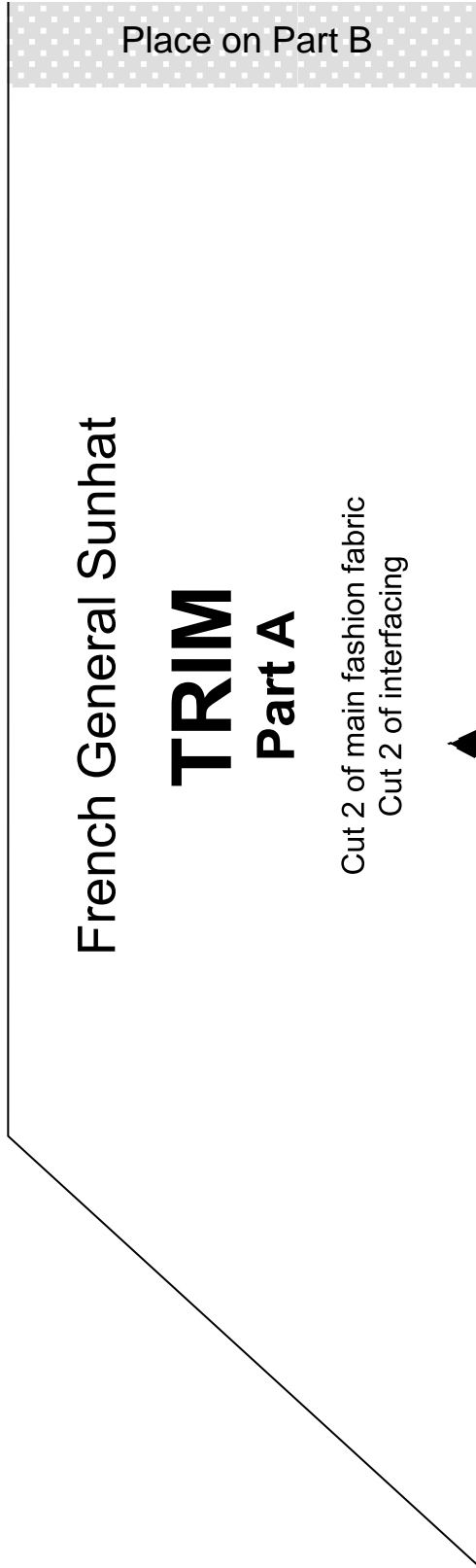
Place over shaded area on Part B

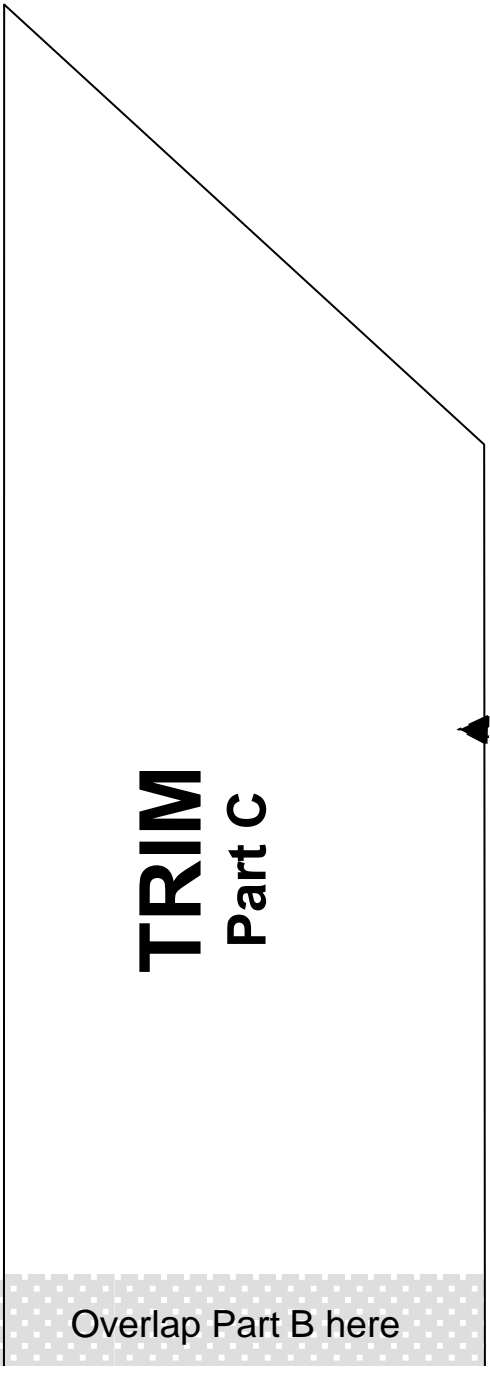
Overlap and Attach Part A here

**UPPER BAND**  
Part B

Place edge on fold







**TRIM**  
Part C

Overlap Part B here



