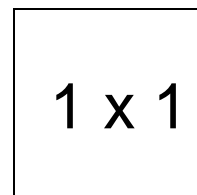


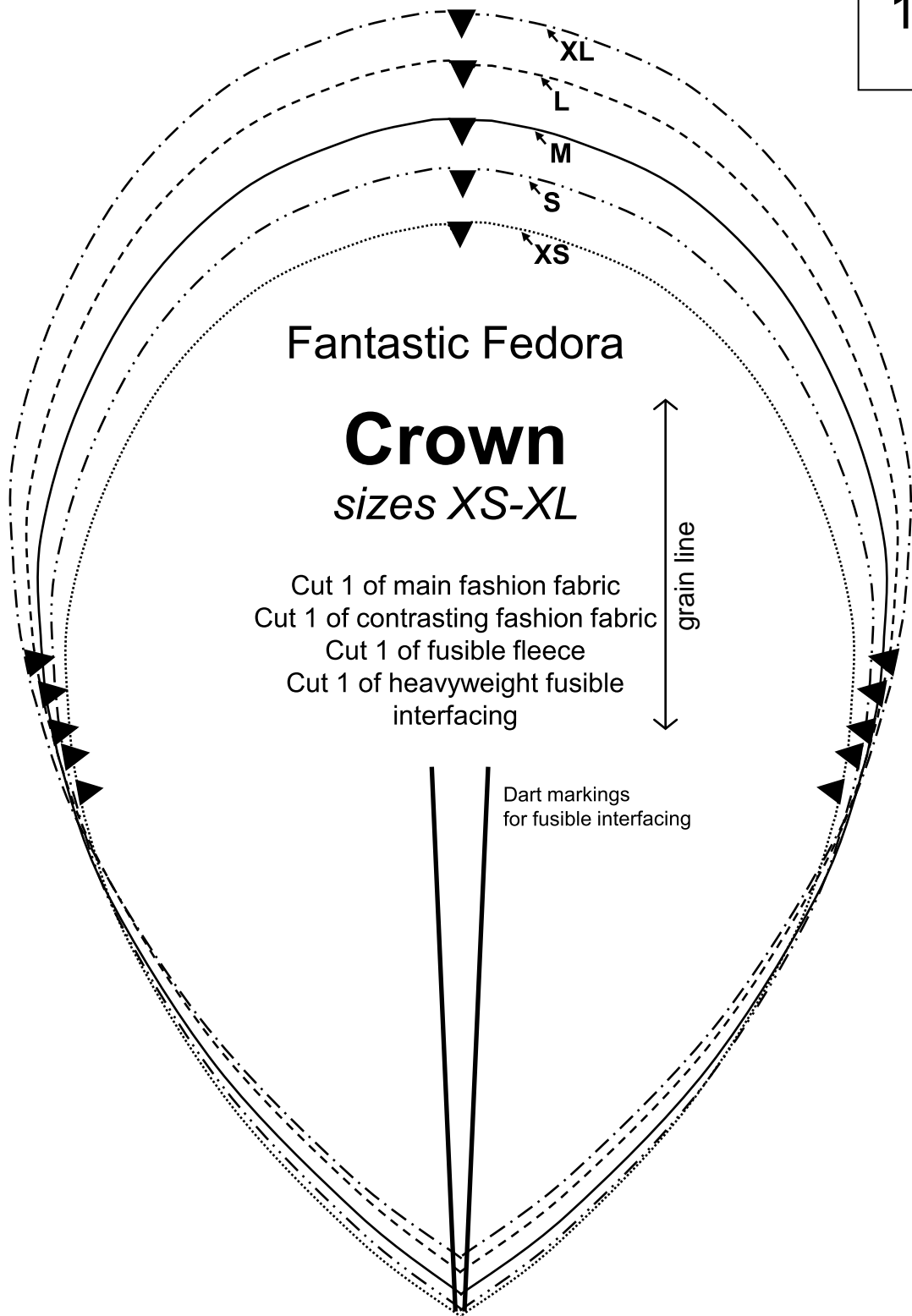
# Fantastic Fedora

## Important note:

The pattern pieces are designed to be printed at 100%. Before printing the patterns, make sure that page scaling is set to none in Adobe Acrobat print window. To be sure that your patterns are going to print at the correct size, measure the box on the first pattern page. It should measure exactly 1 inch by 1 inch.



1 x 1



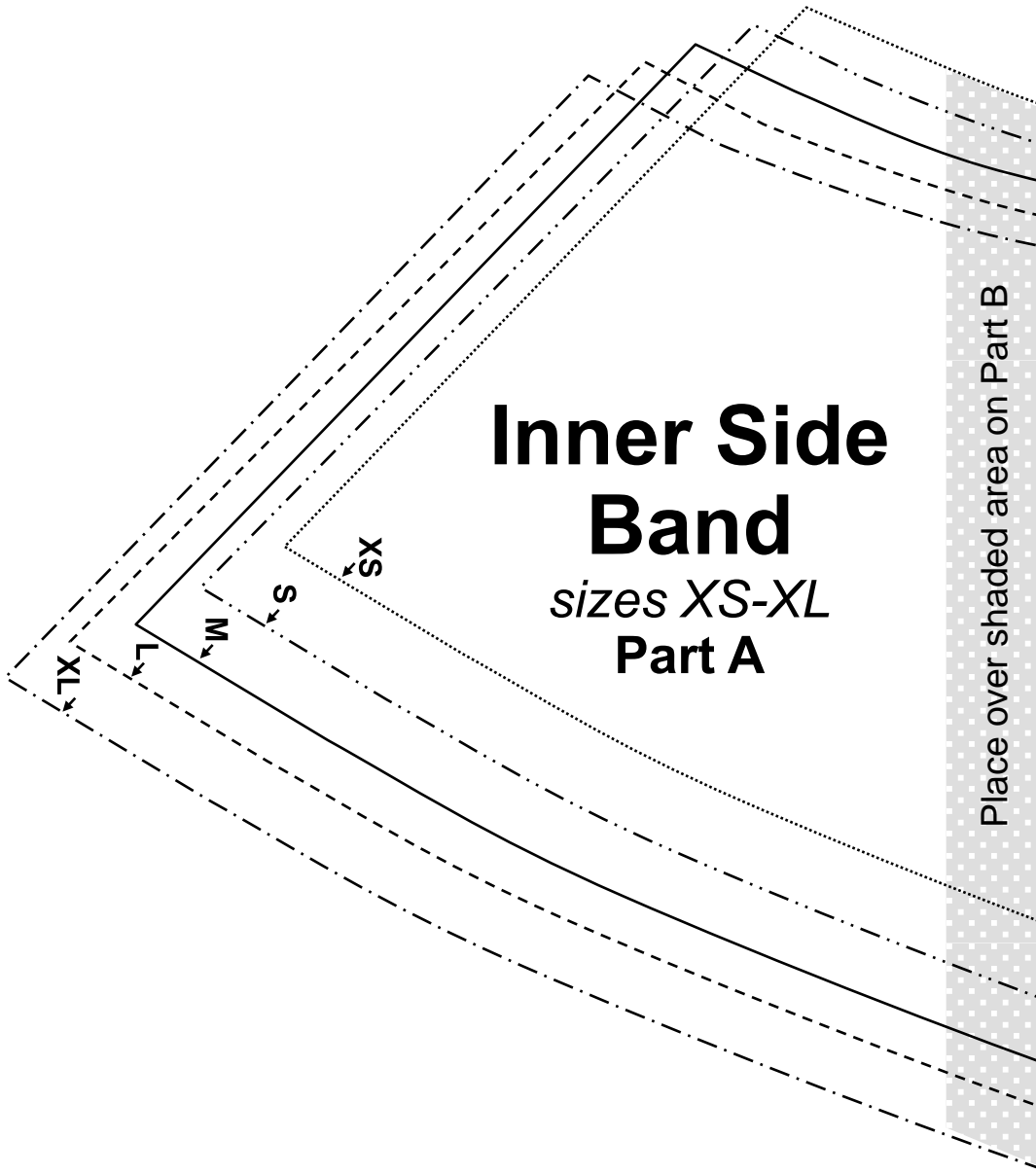
Fantastic Fedora

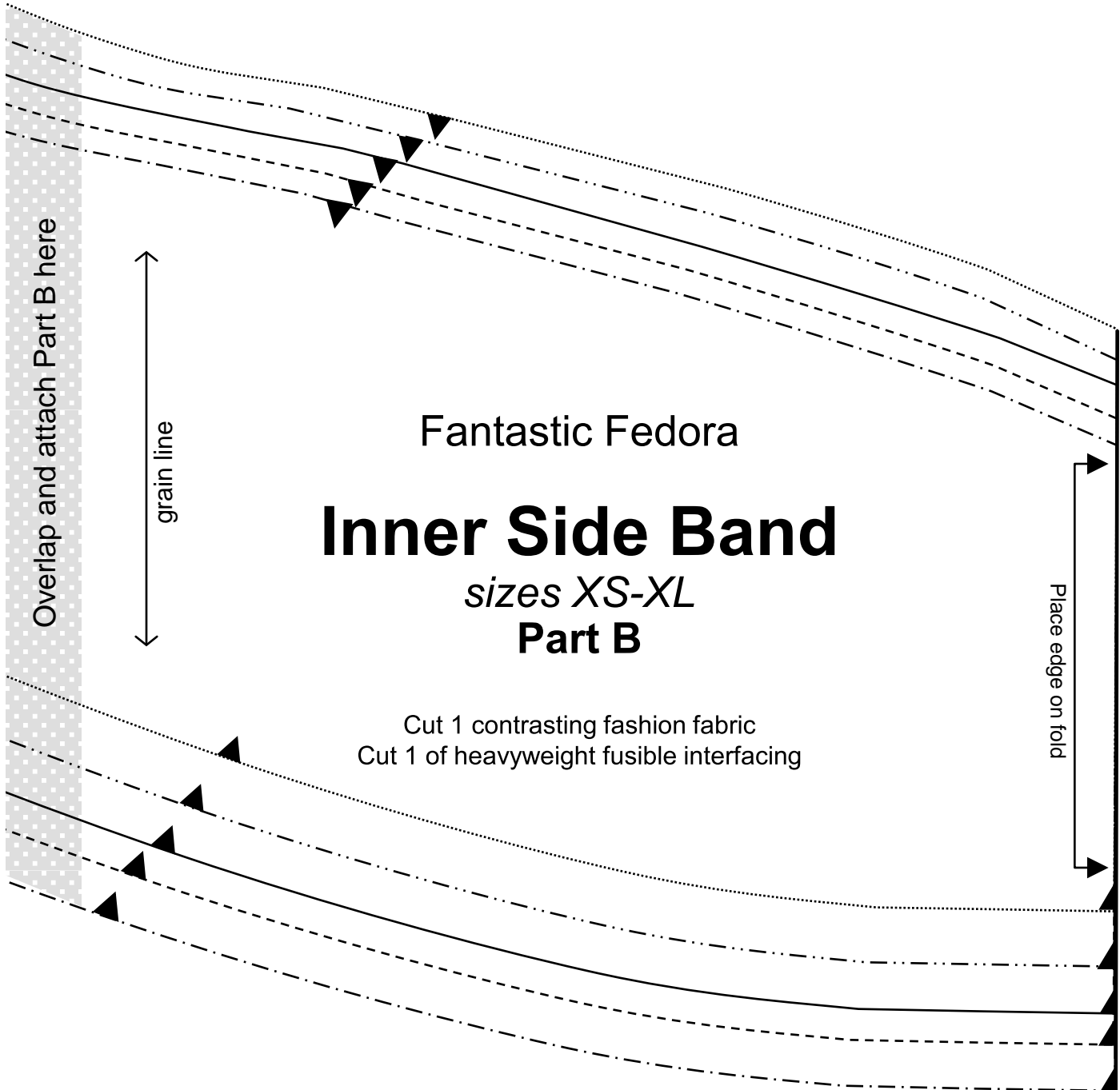
**Crown**  
sizes XS-XL

- Cut 1 of main fashion fabric
- Cut 1 of contrasting fashion fabric
- Cut 1 of fusible fleece
- Cut 1 of heavyweight fusible interfacing

grain line

Dart markings  
for fusible interfacing





Fantastic Fedora

# Inner Side Band

sizes XS-XL

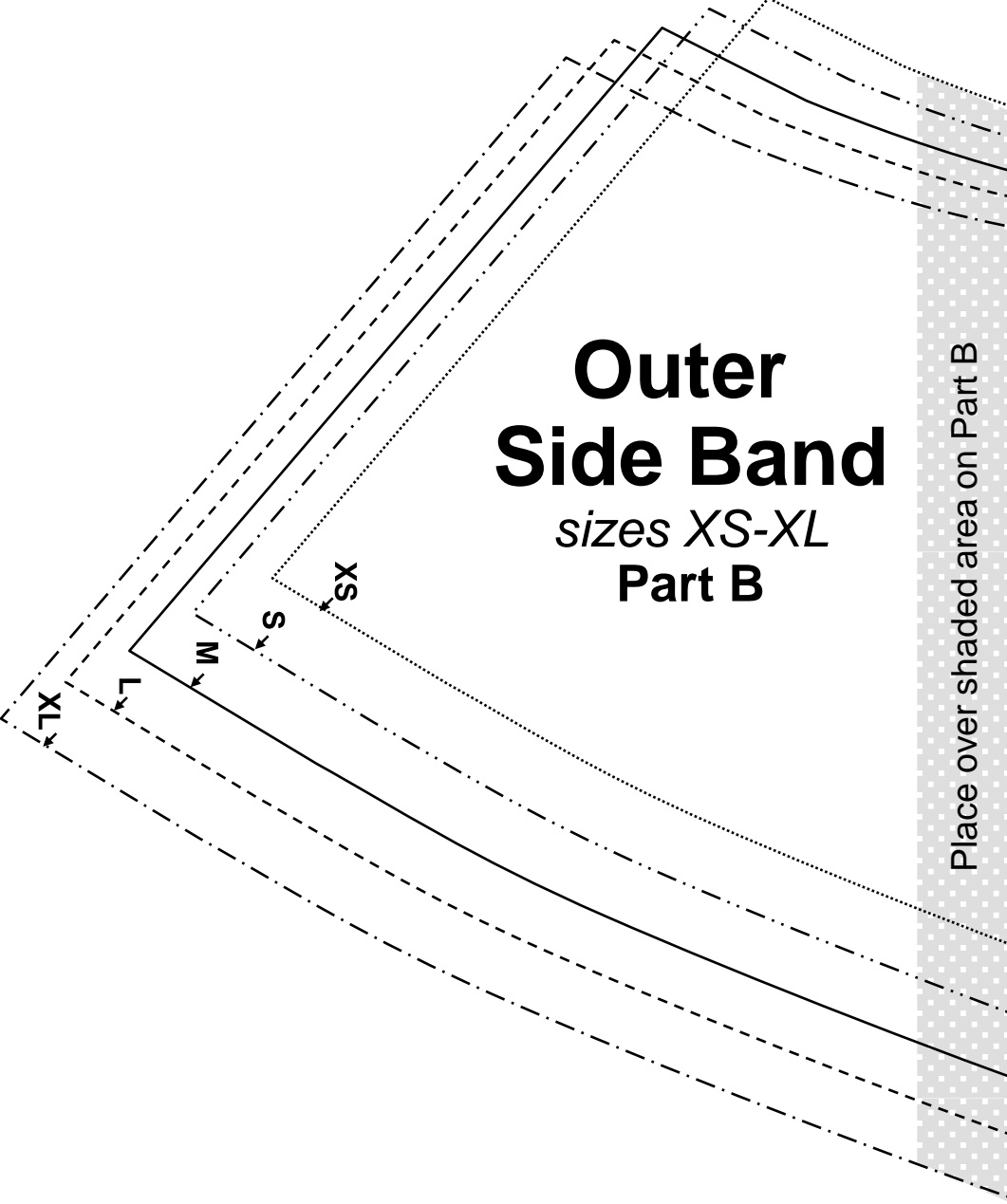
## Part B

Cut 1 contrasting fashion fabric  
Cut 1 of heavyweight fusible interfacing

Overlap and attach Part B here

grain line

Place edge on fold



# Outer Side Band

sizes XS-XL

Part B

Place over shaded area on Part B

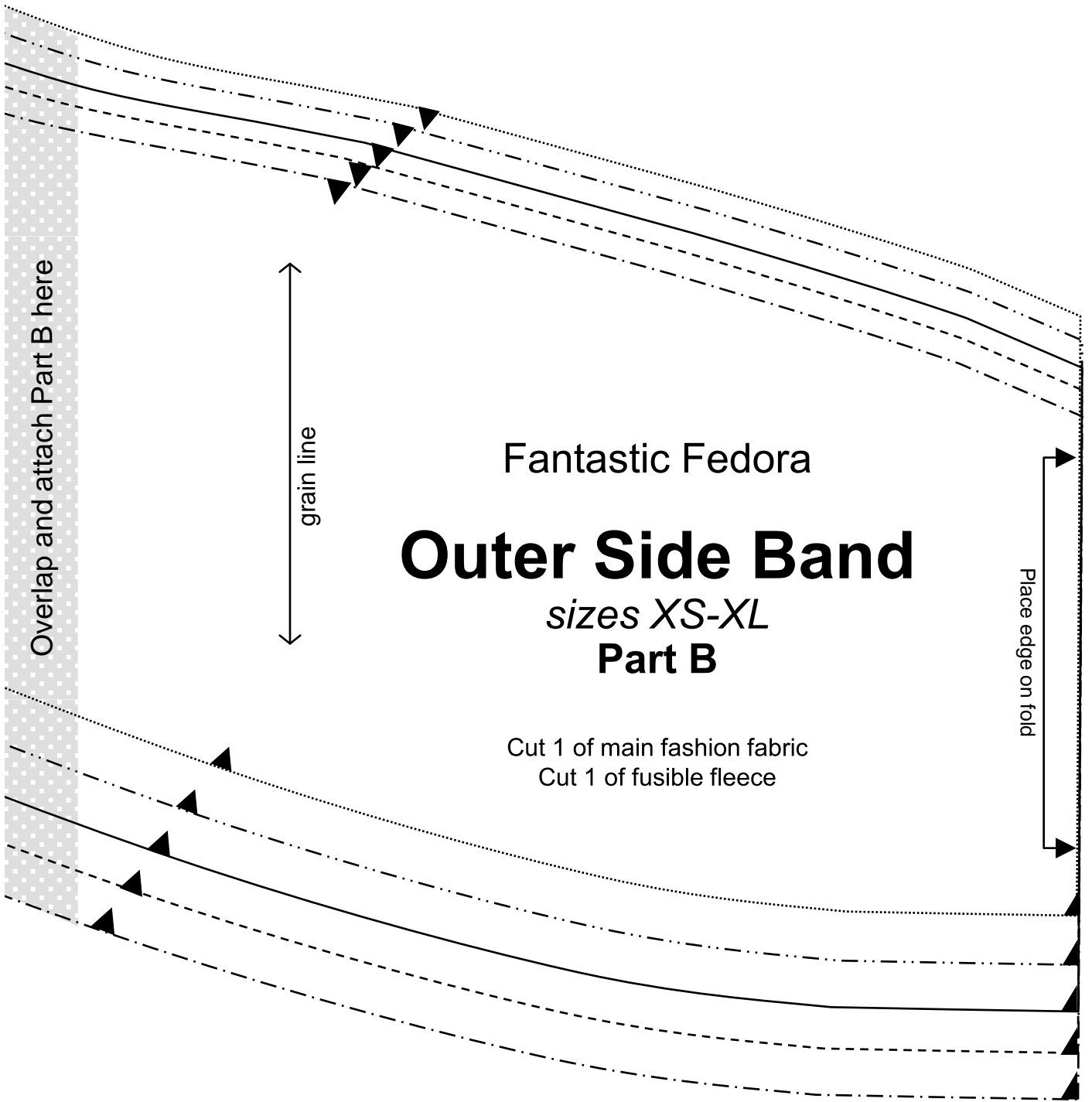
XL

L

M

S

XS



Overlap and attach Part B here

grain line

Fantastic Fedora

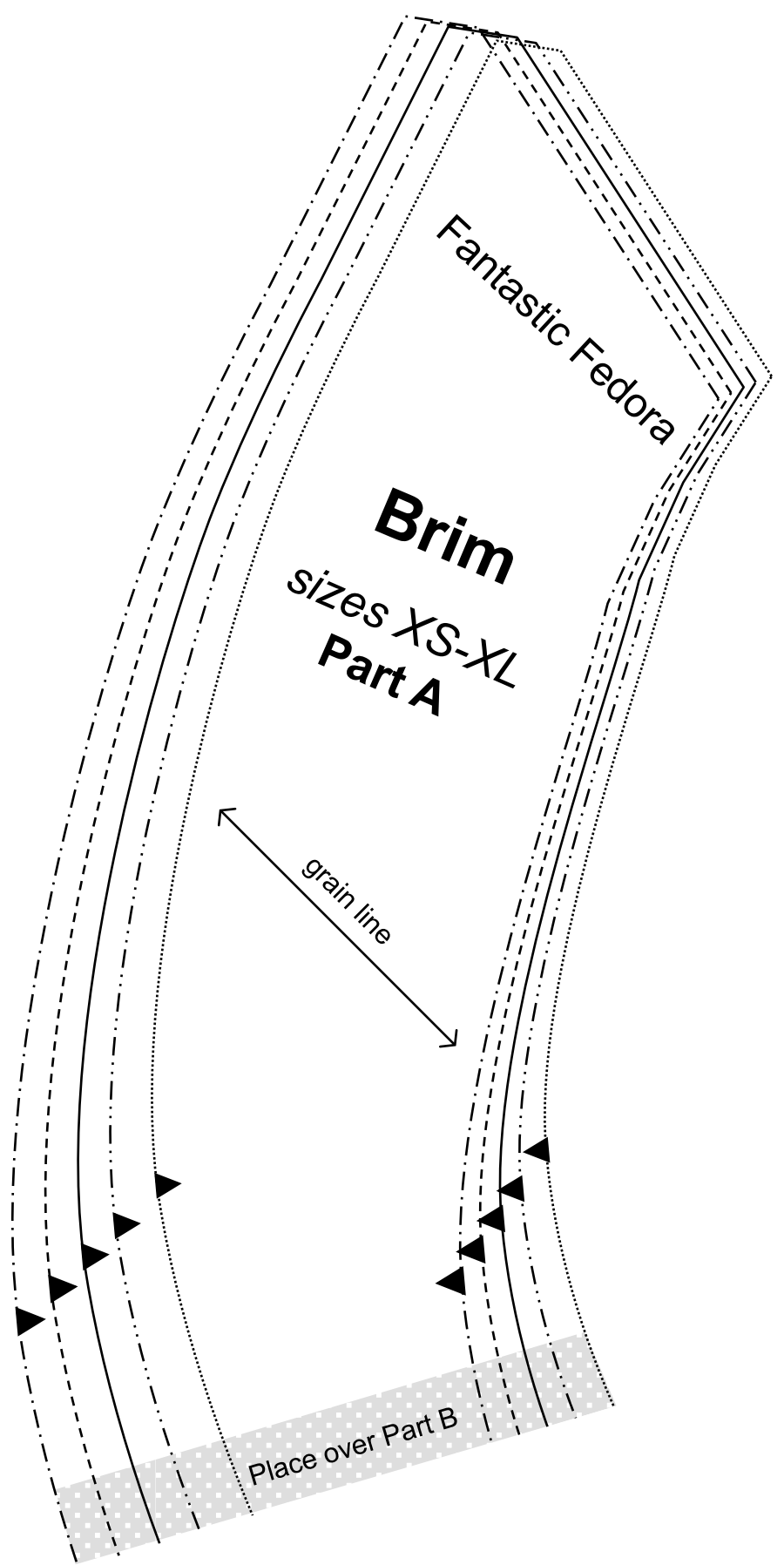
# Outer Side Band

sizes XS-XL

Part B

Place edge on fold

Cut 1 of main fashion fabric  
Cut 1 of fusible fleece

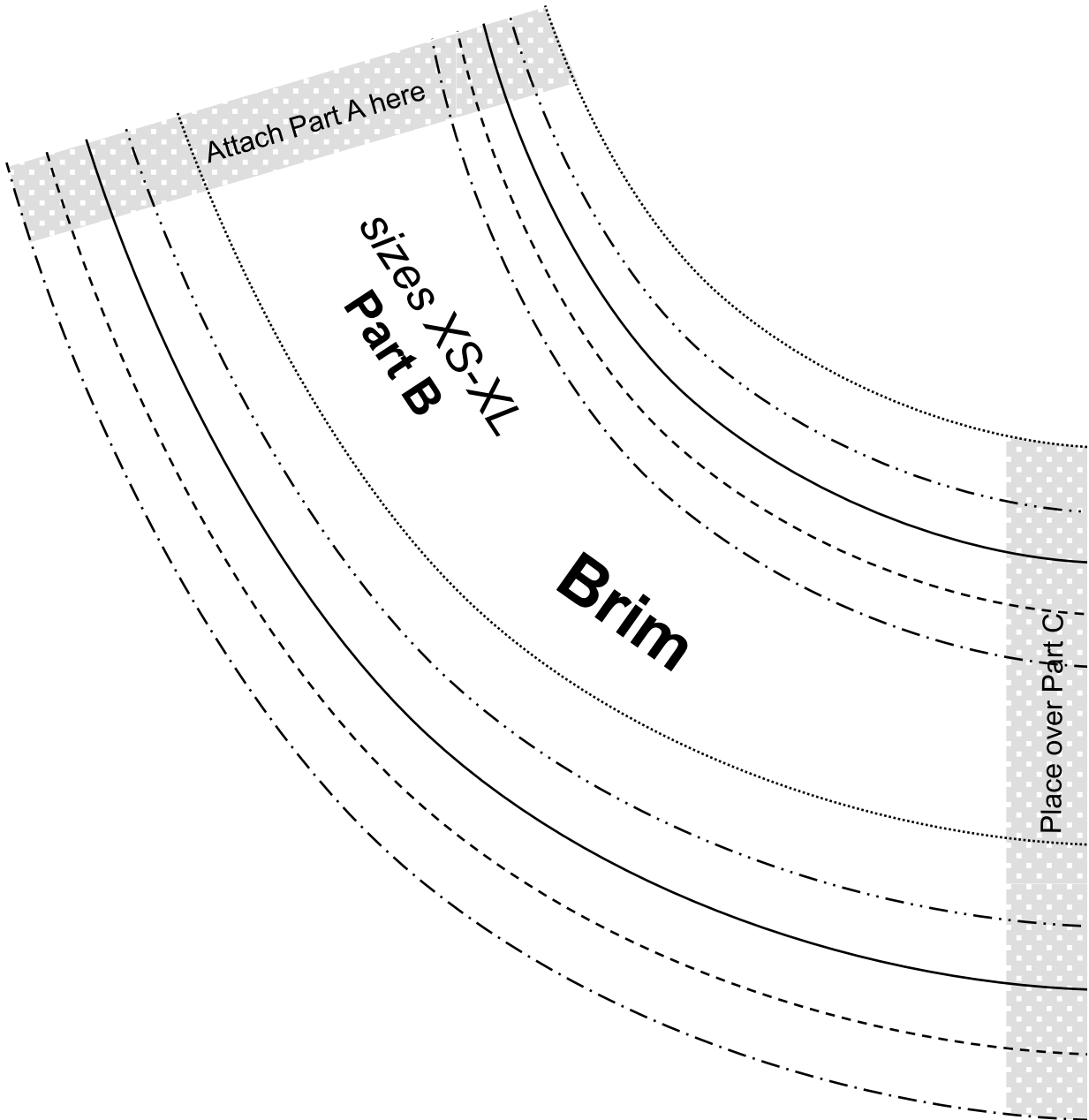


Fantastic Fedora

**Brim**  
sizes XS-XL  
**Part A**

grain line

Place over Part B



Attach Part A here

Part B  
sizes XS-XL

**Brim**

Place over Part C



