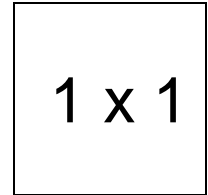


Extreme Altitude Cap

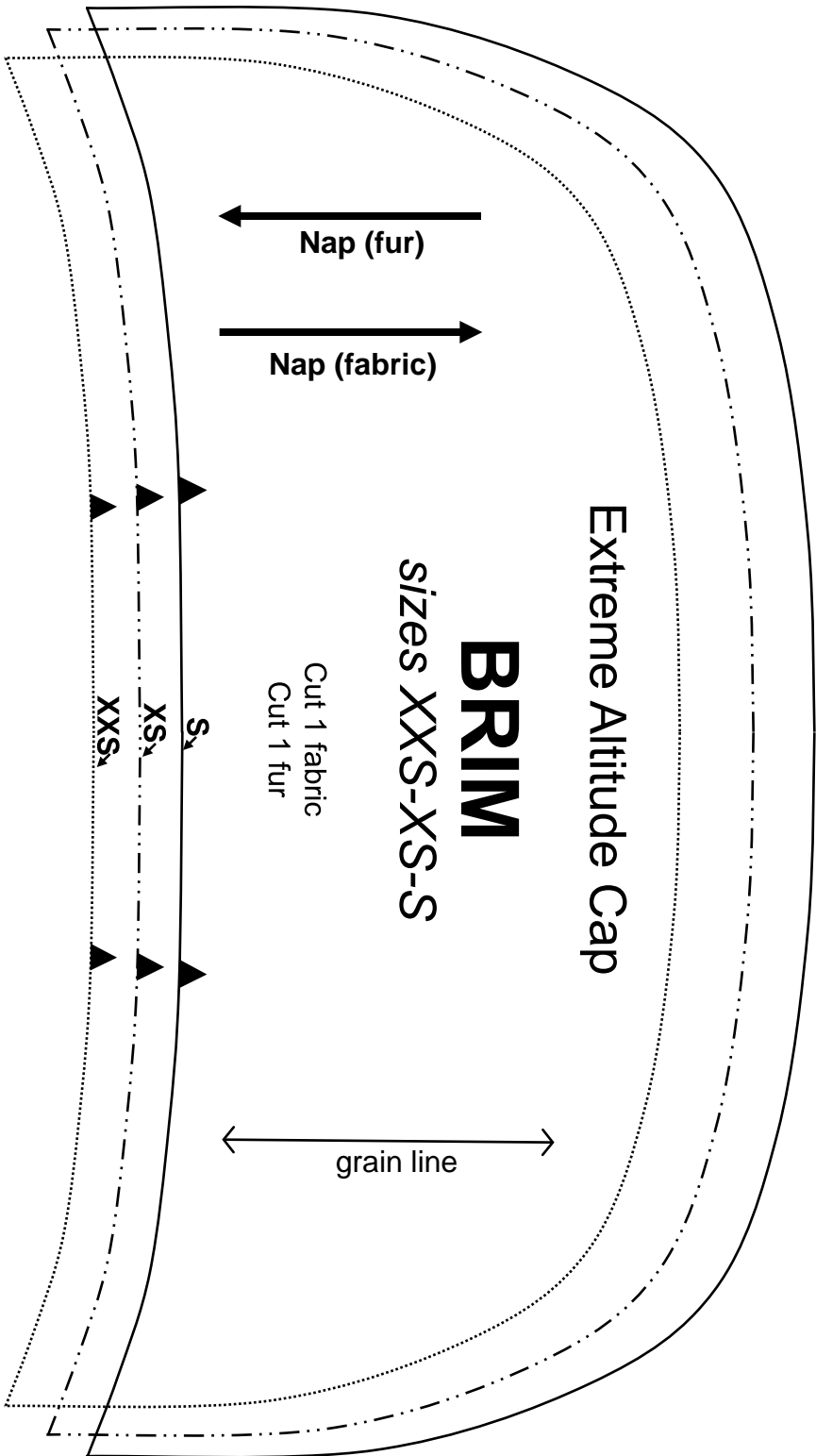
Important note:

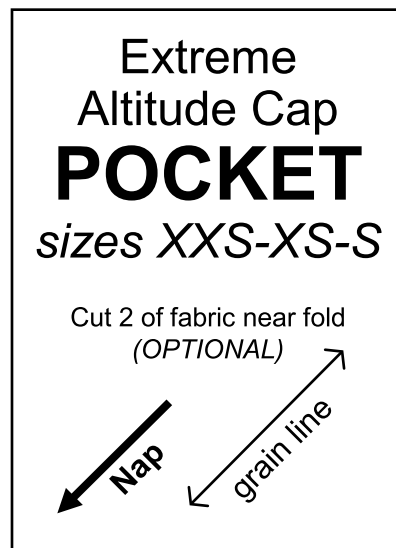
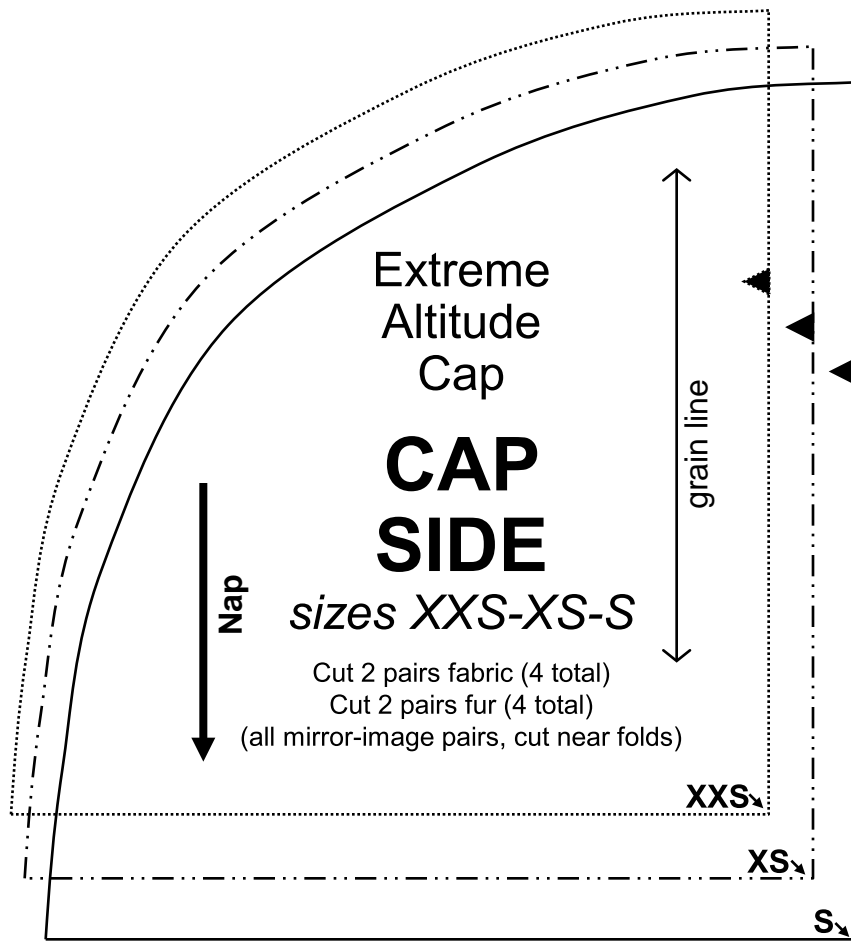
The pattern pieces are designed to be printed at 100%. Before printing the patterns, make sure that page scaling is set to none in Adobe Acrobat print window. To be sure that your patterns are going to print at the correct size, measure the box on the first pattern page. It should measure exactly 1 inch by 1 inch.



For sizes **XXS**, **XS**, and **S**: Print pages 2-6
For sizes **M**, **L**, and **XL**: Print pages 7-11

1 x 1





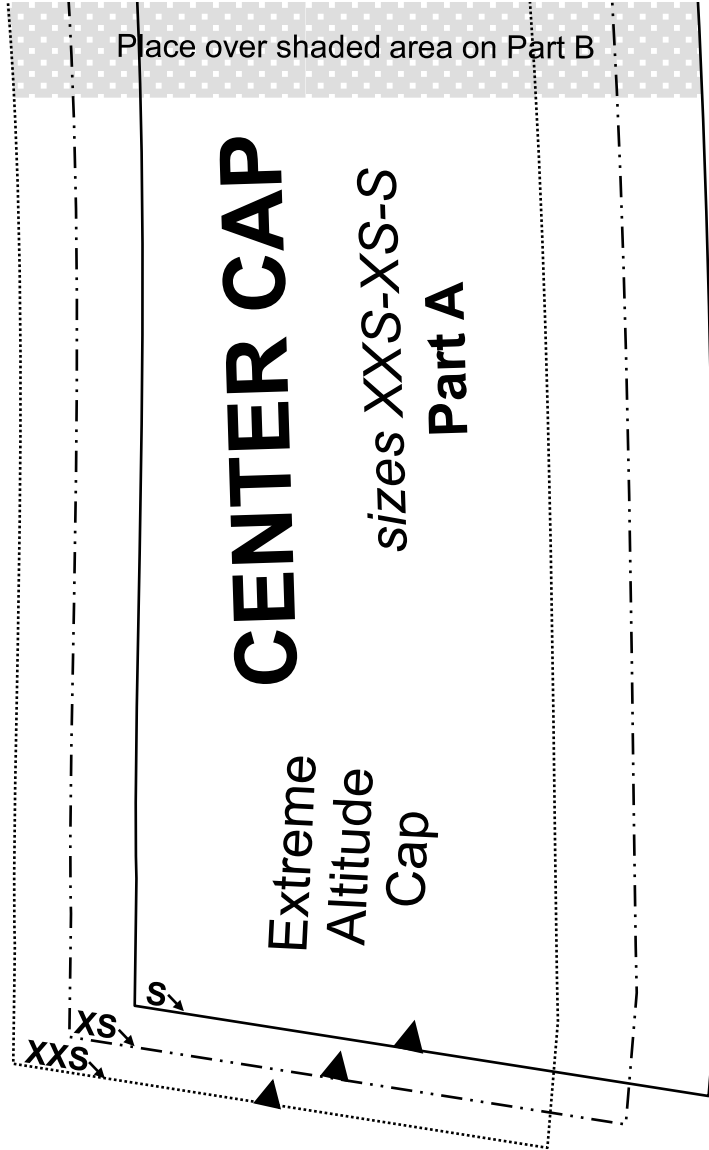
Place over shaded area on Part B

CENTER CAP

sizes XXS-XS-S

Part A

Extreme
Altitude
Cap



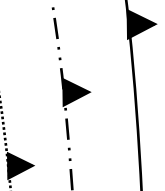
Cut 2 mirror-image
pieces of fabric
(near a fold)
Cut 2 mirror-image
pieces of fur
(near a fold)

CENTER CAP

sizes
XXS-XS-S
Part B

Nap

grain line



Overlap and attach Part A here

Extreme Altitude Cap

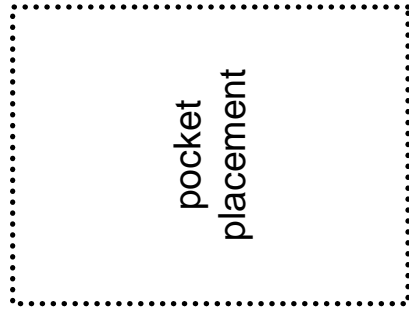
FLAP

sizes XXS-XS-S

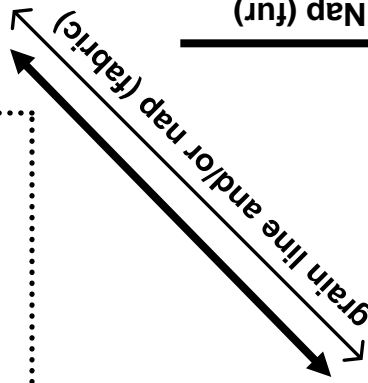
Part A

- Cut 2 mirror image pieces of fabric (near a fold)
- Cut 2 mirror image pieces of fur (near a fold)

S
XS
XXS



grain line (fur)



Nap (fur)

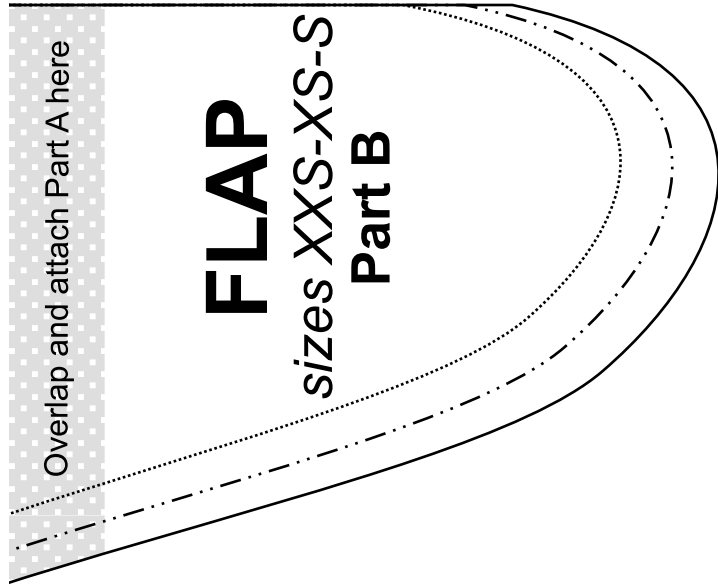
Place over shaded area on Part B

Overlap and attach Part A here

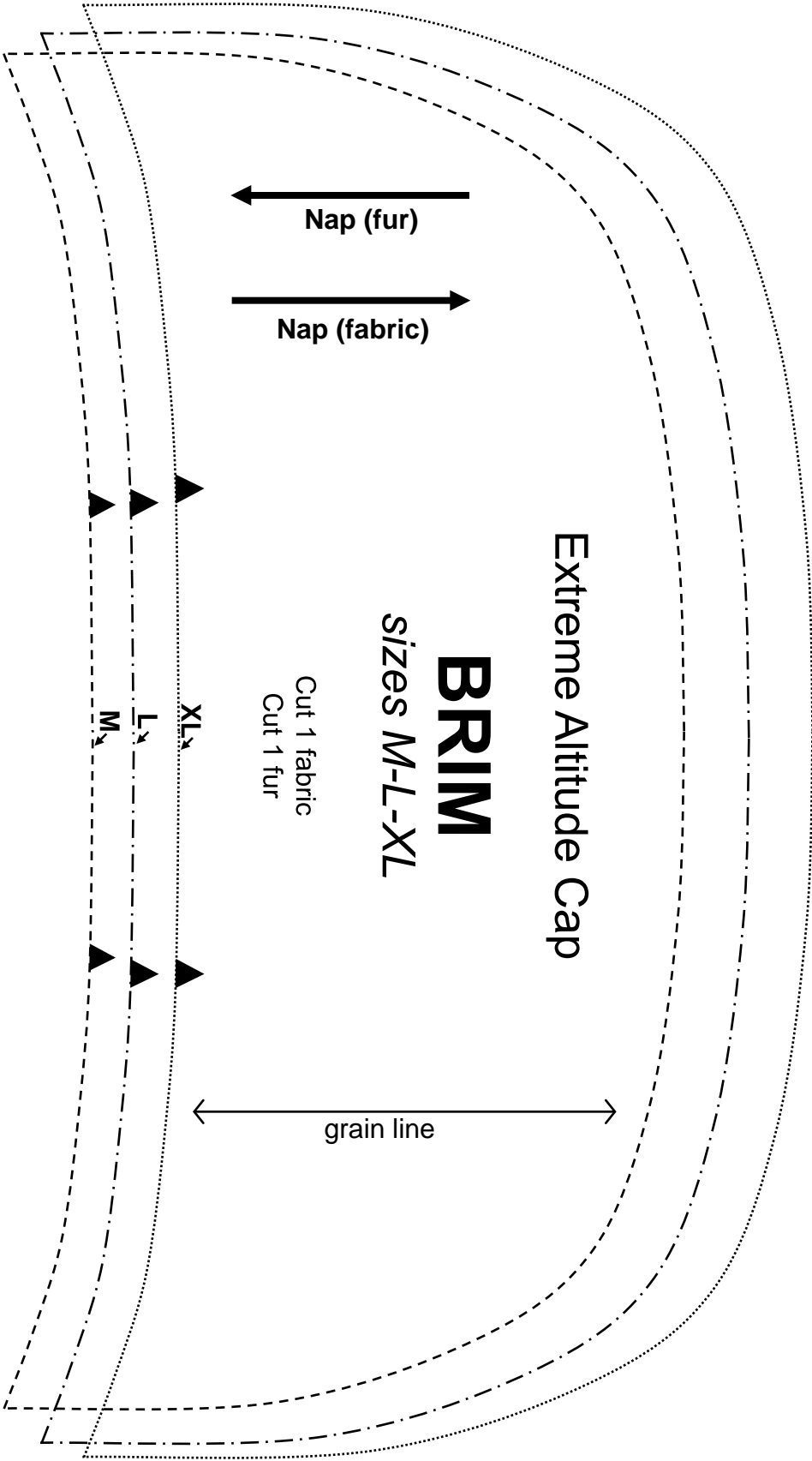
FLAP

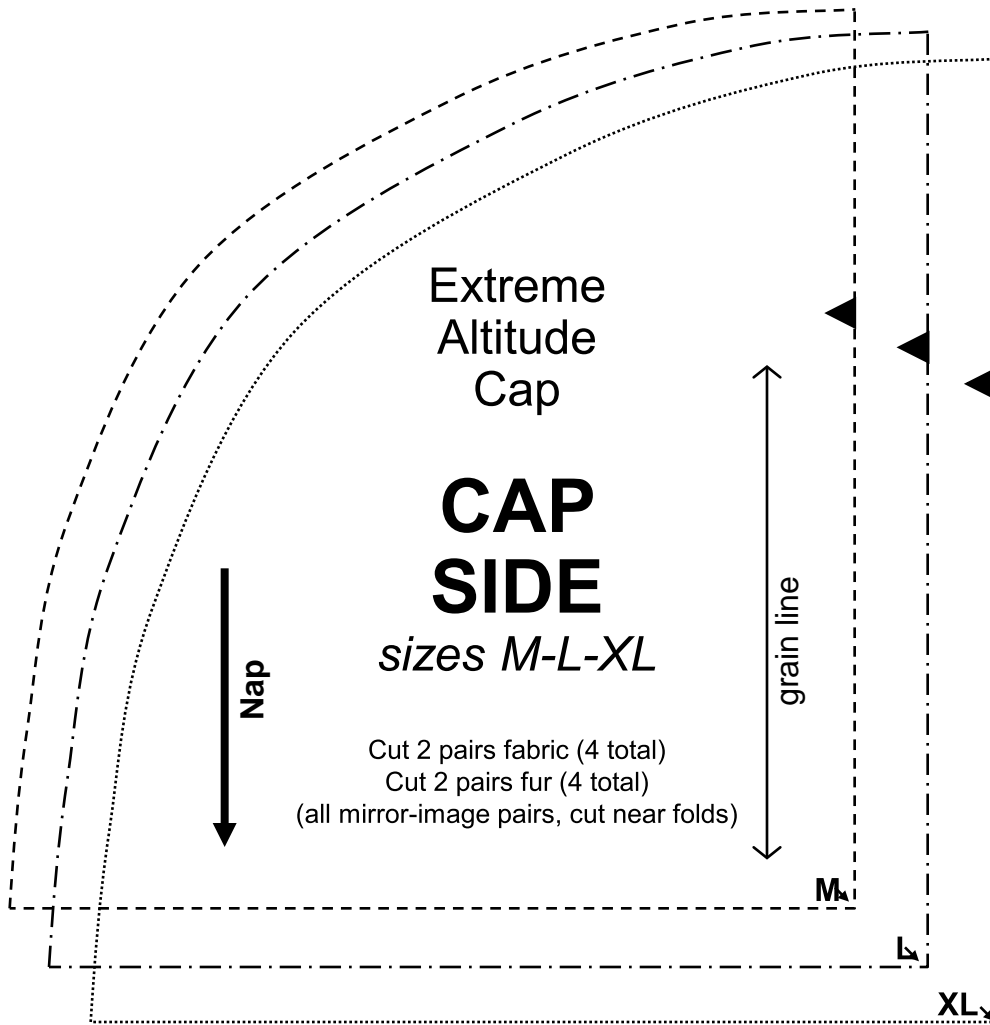
sizes XXS-XS-S

Part B



1 x 1



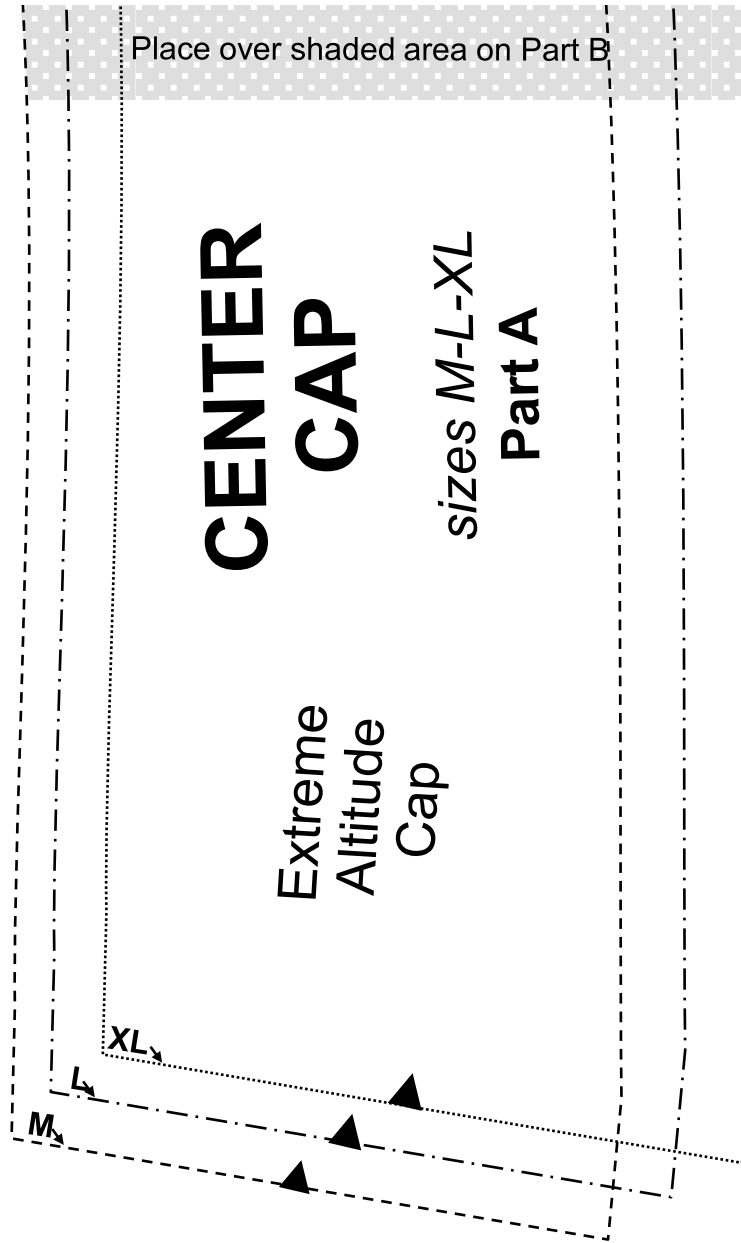


Place over shaded area on Part B

CENTER CAP

sizes M-L-XL
Part A

Extreme
Altitude
Cap



CENTER CAP

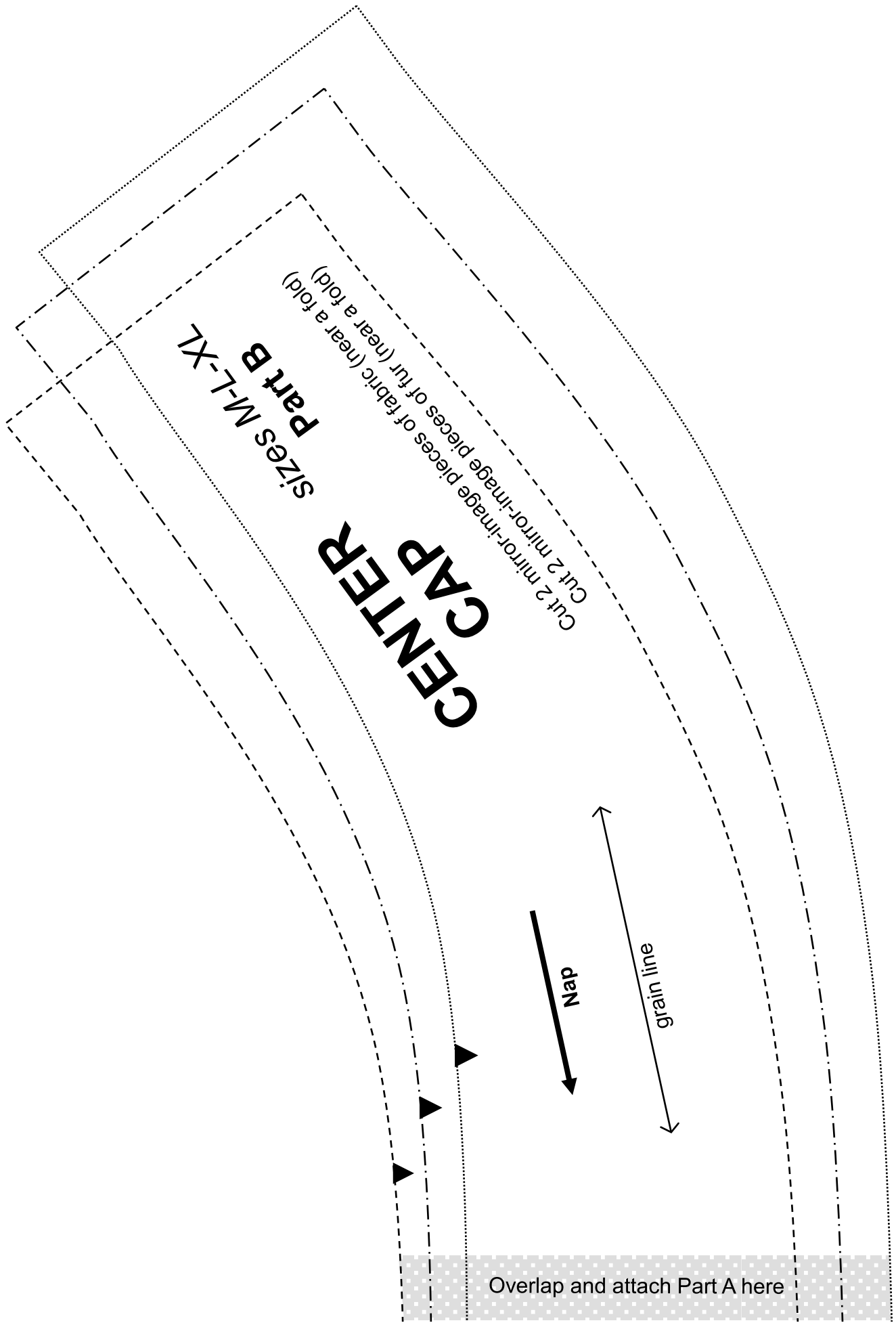
SIZES M-L-XL
Part B

Cut 2 mirror-image pieces of fabric (near a fold)
Cut 2 mirror-image pieces of fur (near a fold)

Nap

grain line

Overlap and attach Part A here



Extreme Altitude Cap

FLAP

sizes M-L-XL
Part A

Cut 2 mirror image pieces of fabric (near a fold)
Cut 2 mirror image pieces of fur (near a fold)

