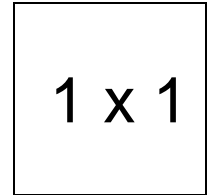
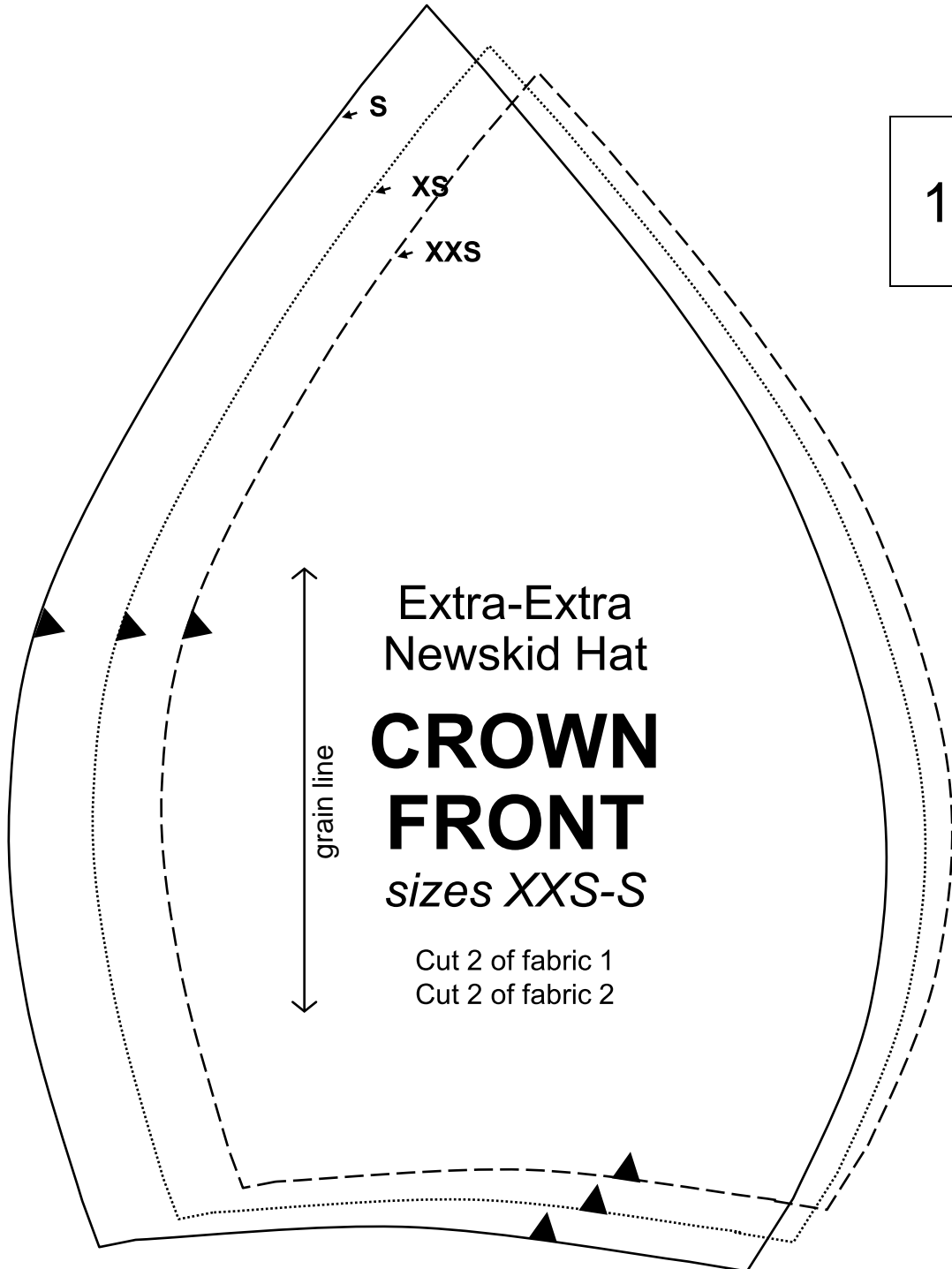


# Extra-Extra Newskid Cap

## Important note:

The pattern pieces are designed to be printed at 100%. Before printing the patterns, make sure that page scaling is set to none in Adobe Acrobat print window. To be sure that your patterns are going to print at the correct size, measure the box on the first pattern page. It should measure exactly 1 inch by 1 inch.





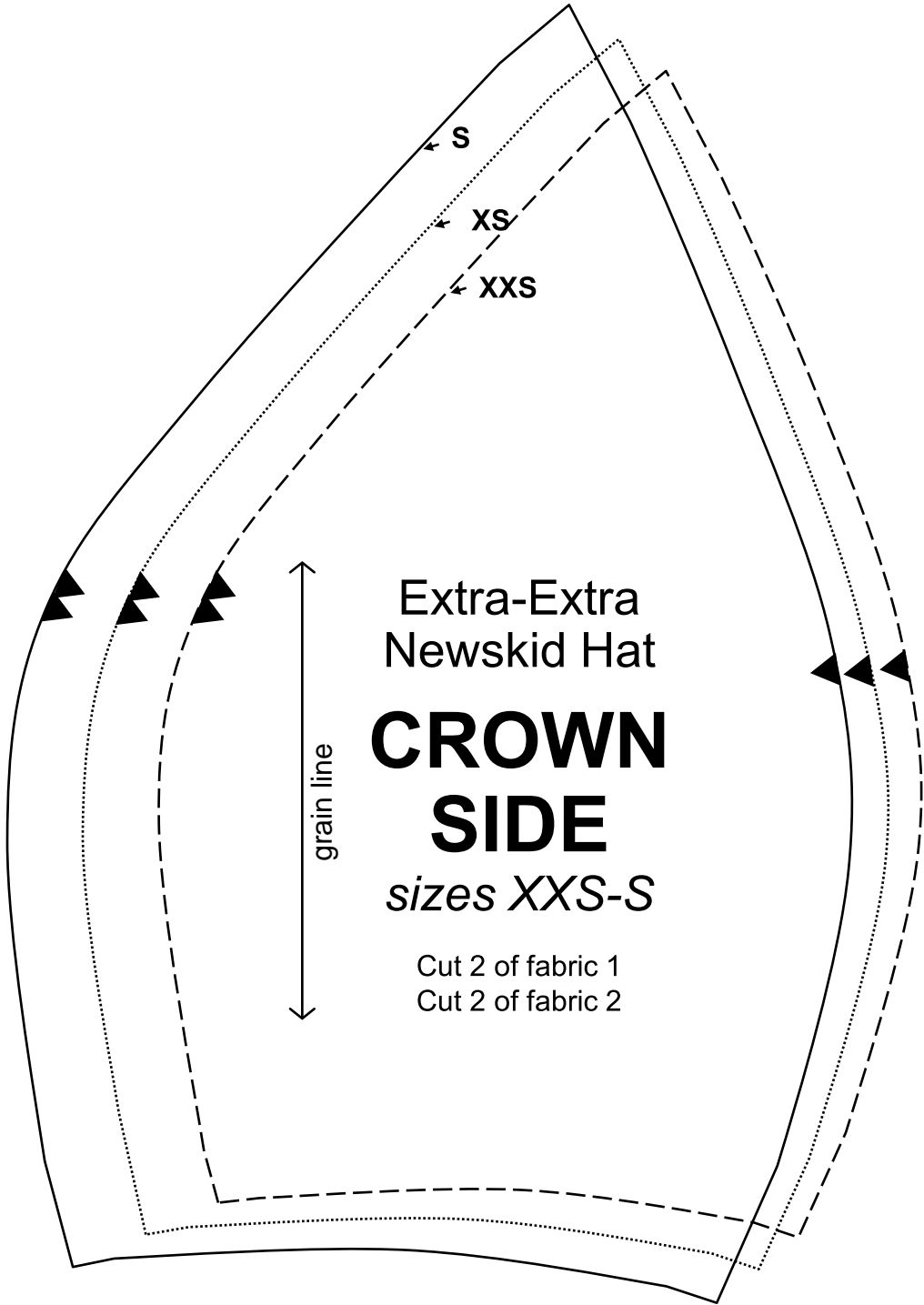
1 x 1

Extra-Extra  
Newskid Hat

# CROWN FRONT

sizes *XXS-S*

Cut 2 of fabric 1  
Cut 2 of fabric 2

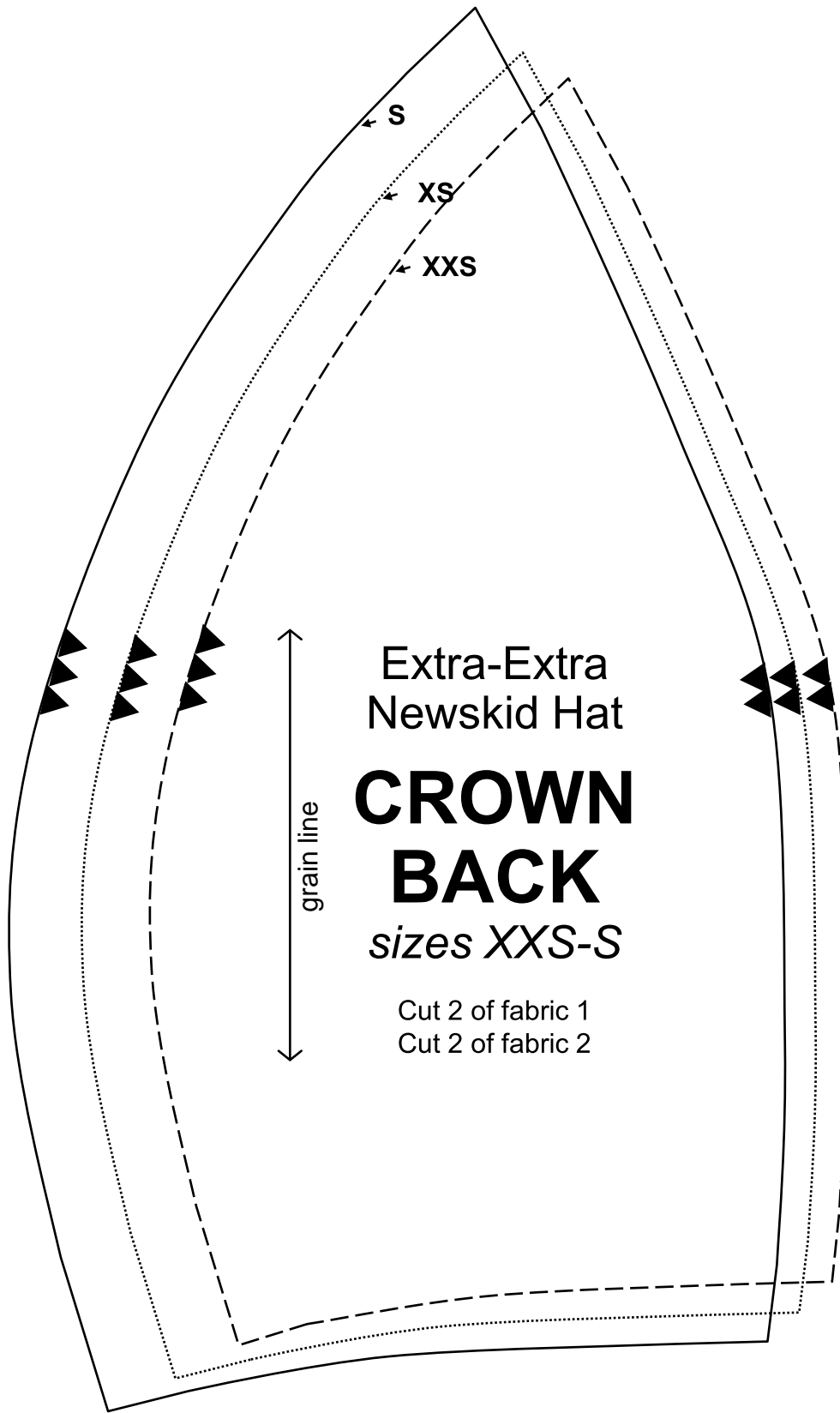


Extra-Extra  
Newskid Hat

**CROWN  
SIDE**

*sizes XXS-S*

Cut 2 of fabric 1  
Cut 2 of fabric 2



S

XS

XXS

grain line

Extra-Extra  
Newskid Hat

**CROWN  
BACK**

sizes *XXS-S*

Cut 2 of fabric 1  
Cut 2 of fabric 2

