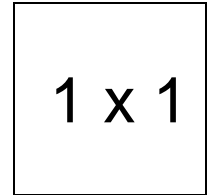
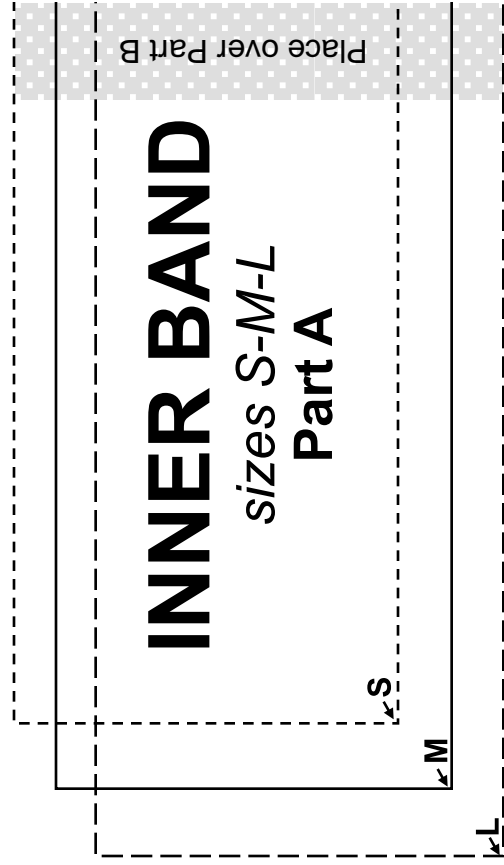
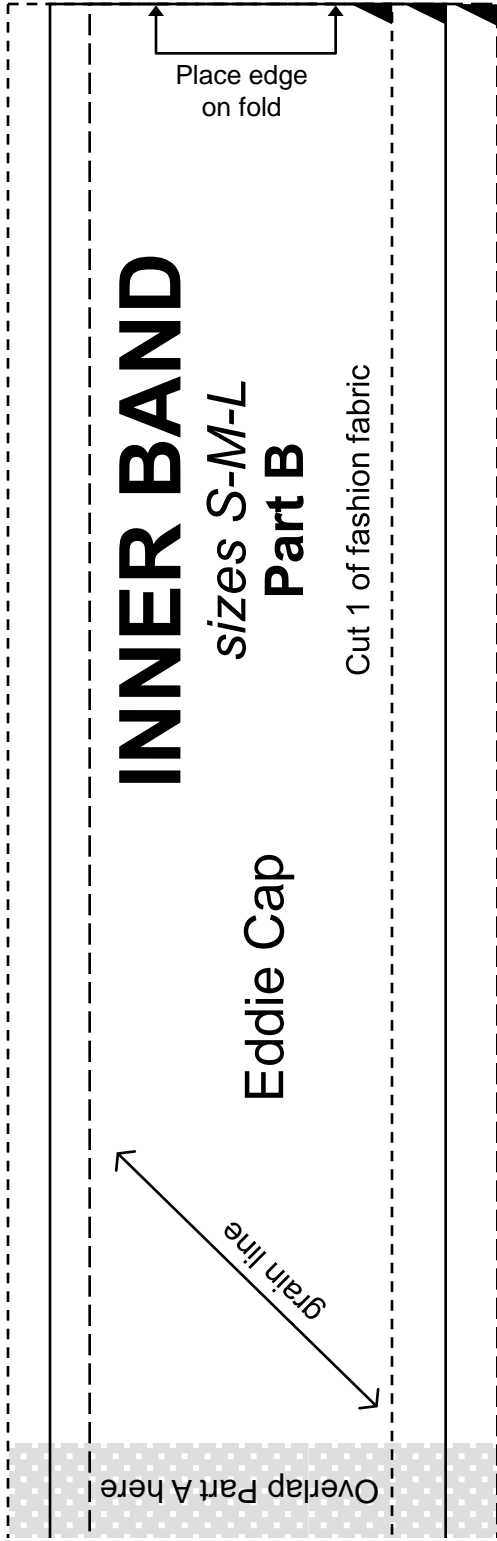


Eddie Cap

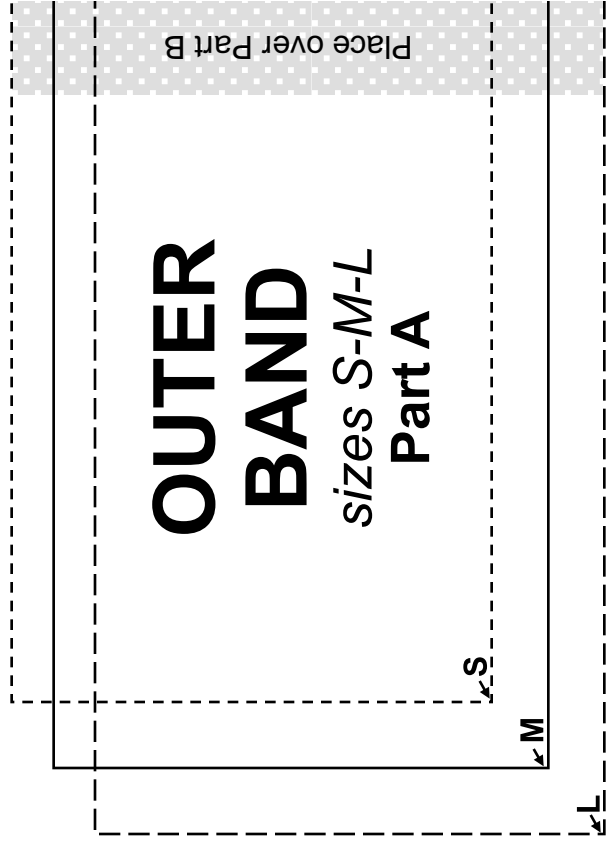
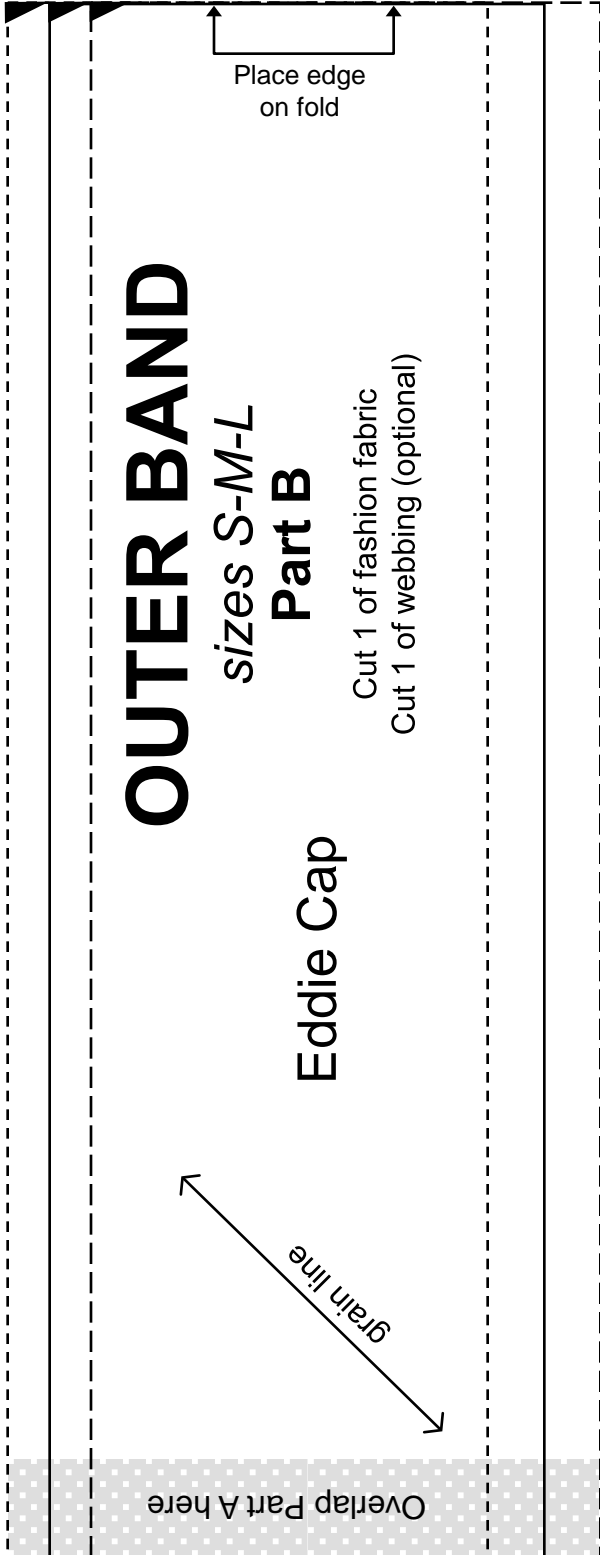
Important note:

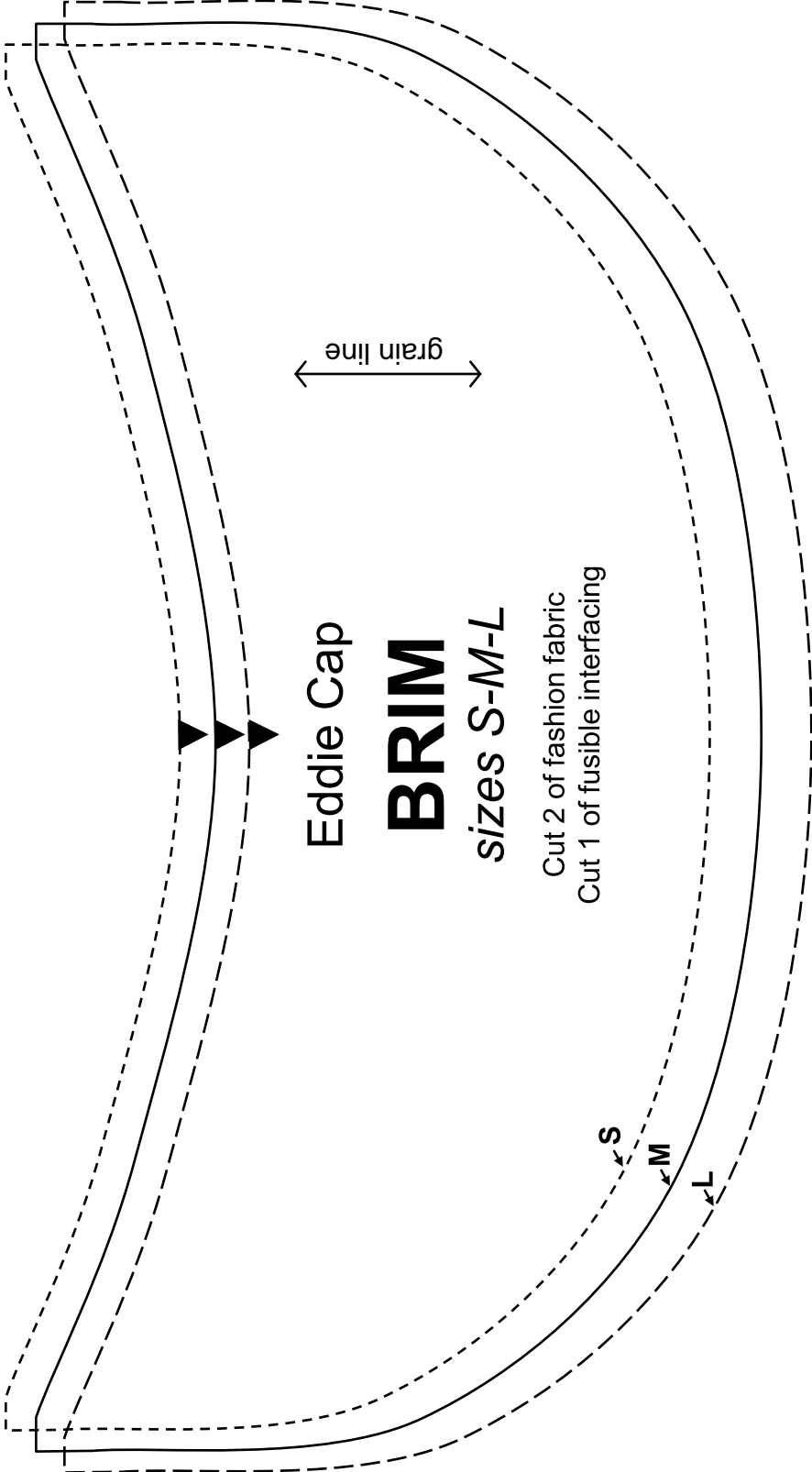
The pattern pieces are designed to be printed at 100%. Before printing the patterns, make sure that page scaling is set to none in Adobe Acrobat print window. To be sure that your patterns are going to print at the correct size, measure the box on the first pattern page. It should measure exactly 1 inch by 1 inch.





1 x 1





grain line

Eddie Cap

BRIM

sizes S-M-L

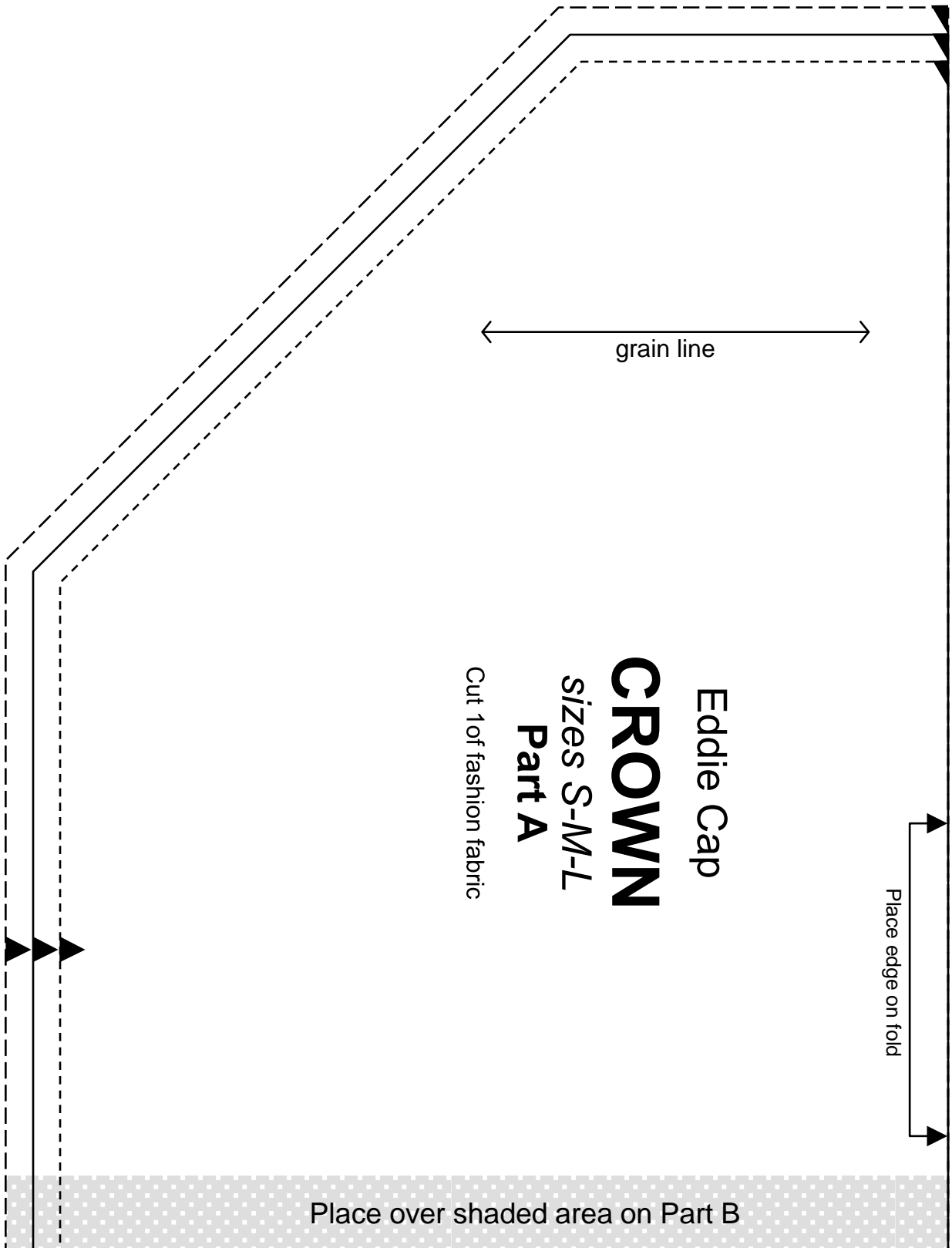
Cut 2 of fashion fabric

Cut 1 of fusible interfacing

S

M

L



grain line

Place edge on fold

Place over shaded area on Part B

Eddie Cap

CROWN

sizes S-M-L

Part A

Cut 1 of fashion fabric

Overlap and attach Part A here

CROWN
sizes S-M-L
Part B

S
M
L

