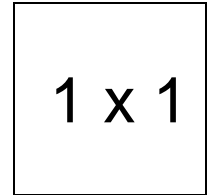


Downtown Hat

Important note:

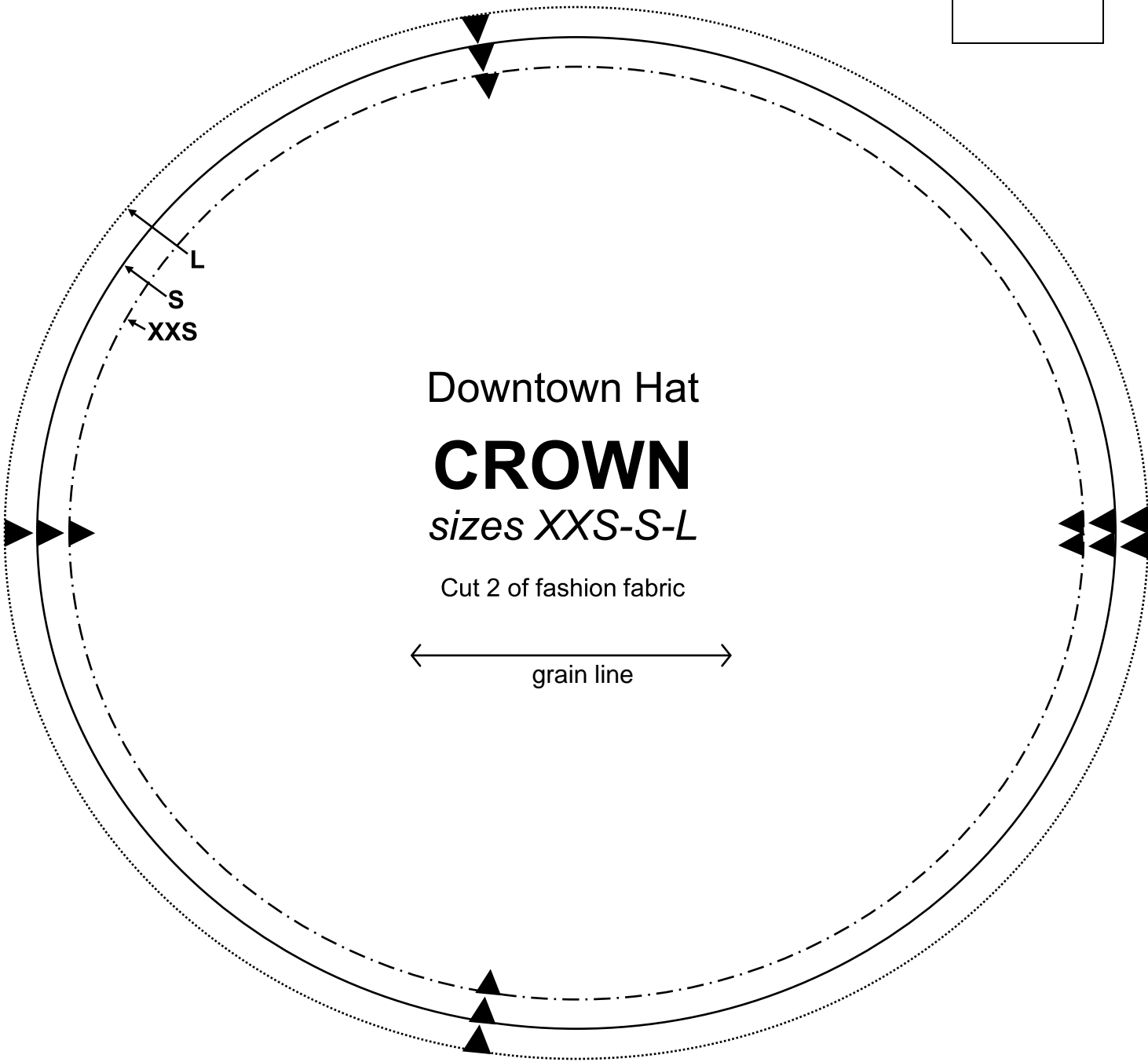
The pattern pieces are designed to be printed at 100%. Before printing the patterns, make sure that page scaling is set to none in Adobe Acrobat print window. To be sure that your patterns are going to print at the correct size, measure the box on the first pattern page. It should measure exactly 1 inch by 1 inch.



For sizes **XXS, S, and L**: Print pages 2-9

For sizes **XS, M, and XL**: Print pages 10-17

1 x 1



Downtown
Hat

INNER SIDE BAND

sizes *XXS-S-L*

Part A

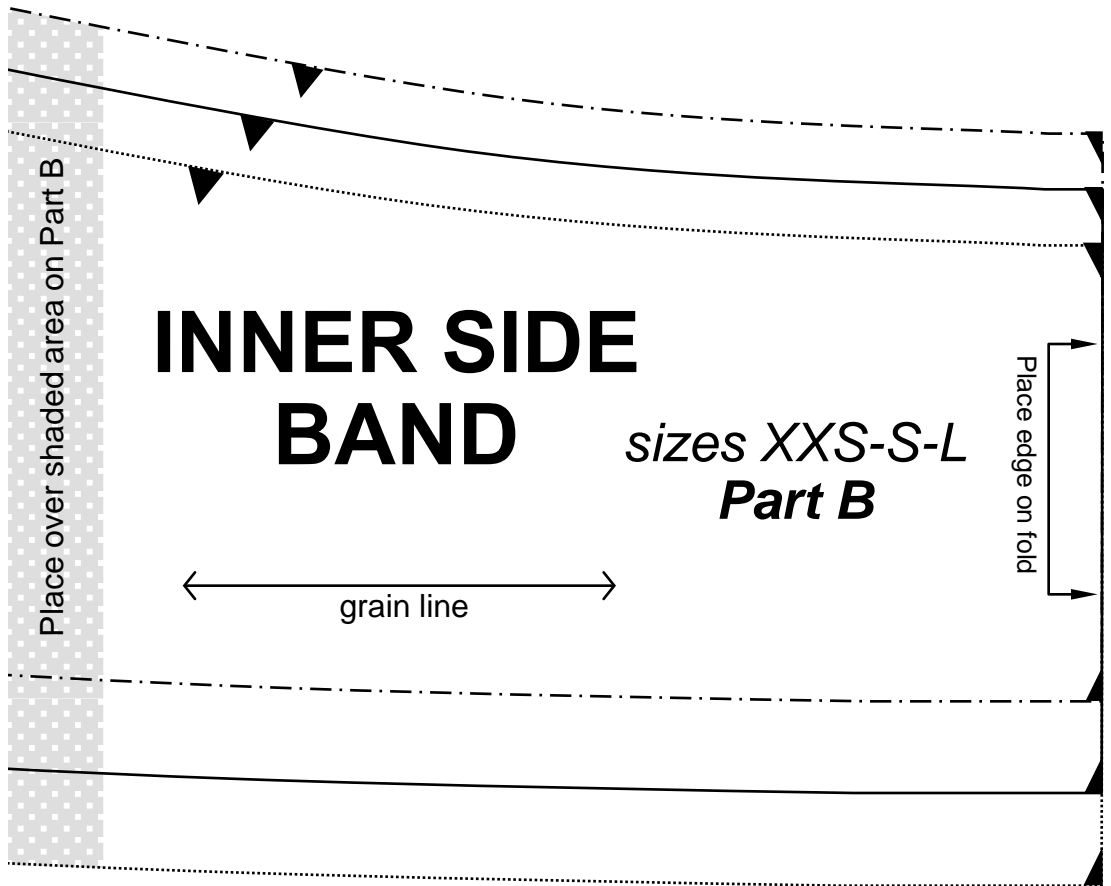
Cut 1 of fashion fabric

Place over shaded area on Part B

XXS

S

L



Place over shaded area on Part B

INNER SIDE BAND

*sizes XXS-S-L
Part B*

← grain line →

Place edge on fold

Downtown
Hat

OUTER SIDE BAND

sizes *XXS-S-L*

Part A

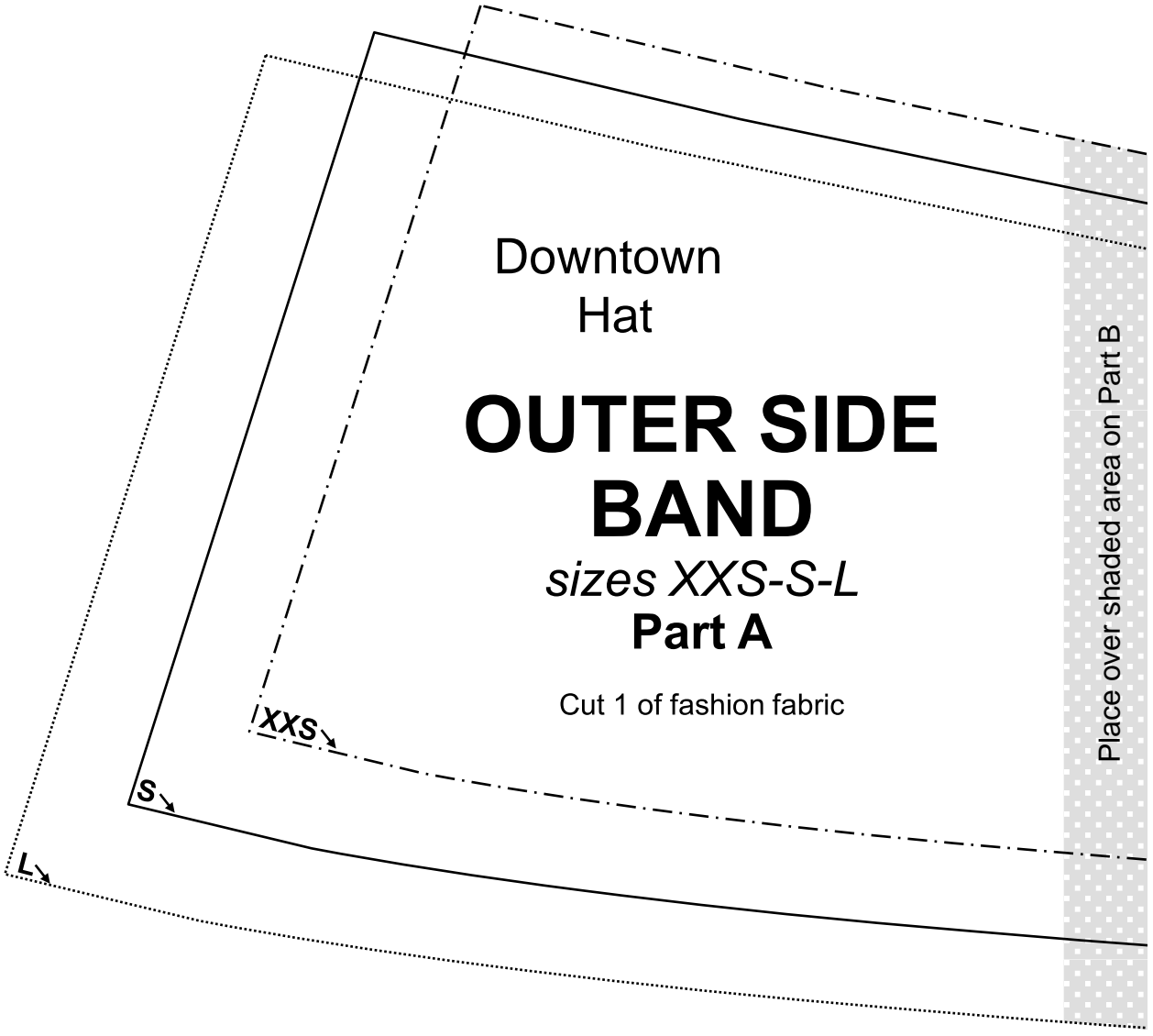
Cut 1 of fashion fabric

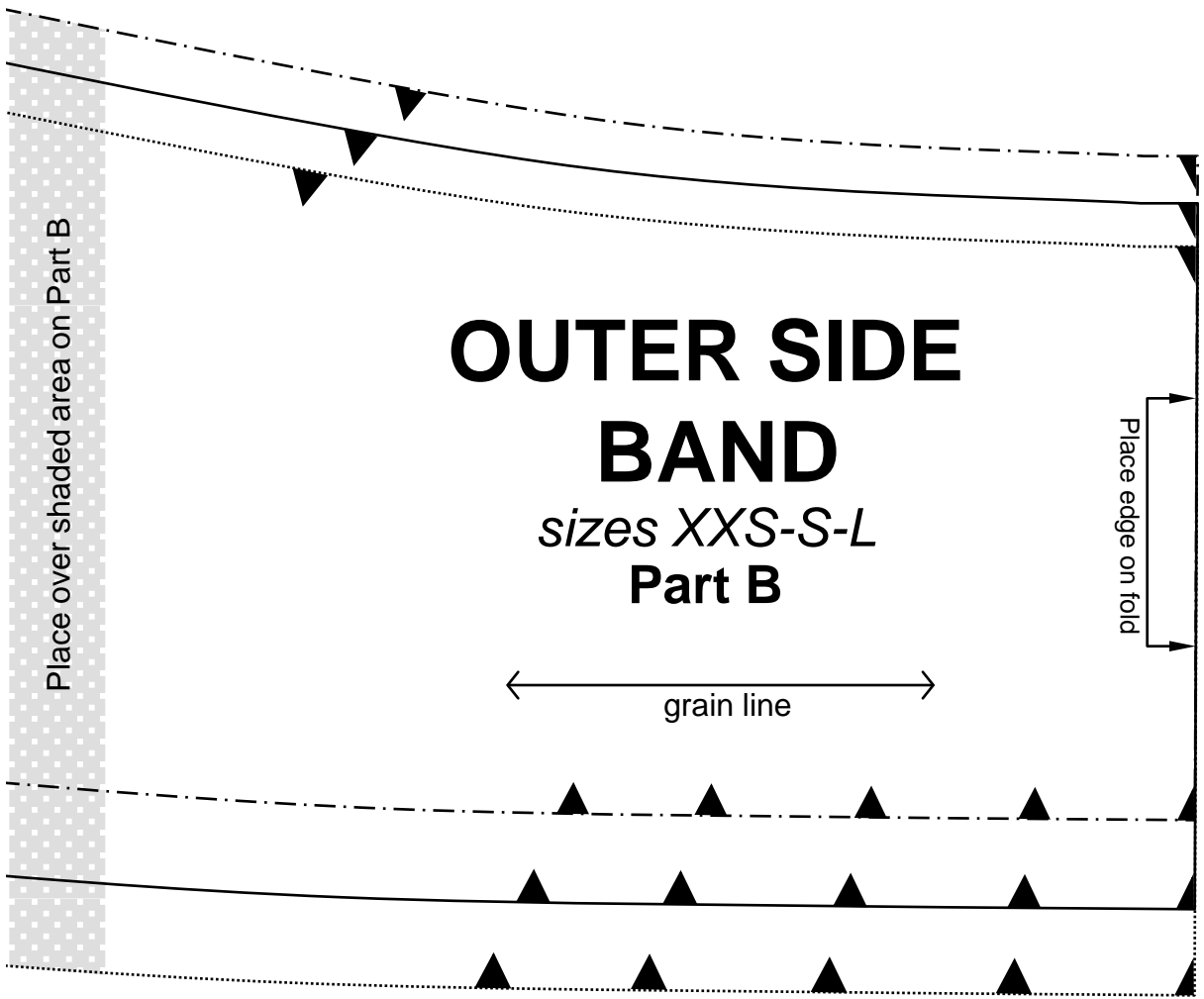
Place over shaded area on Part B

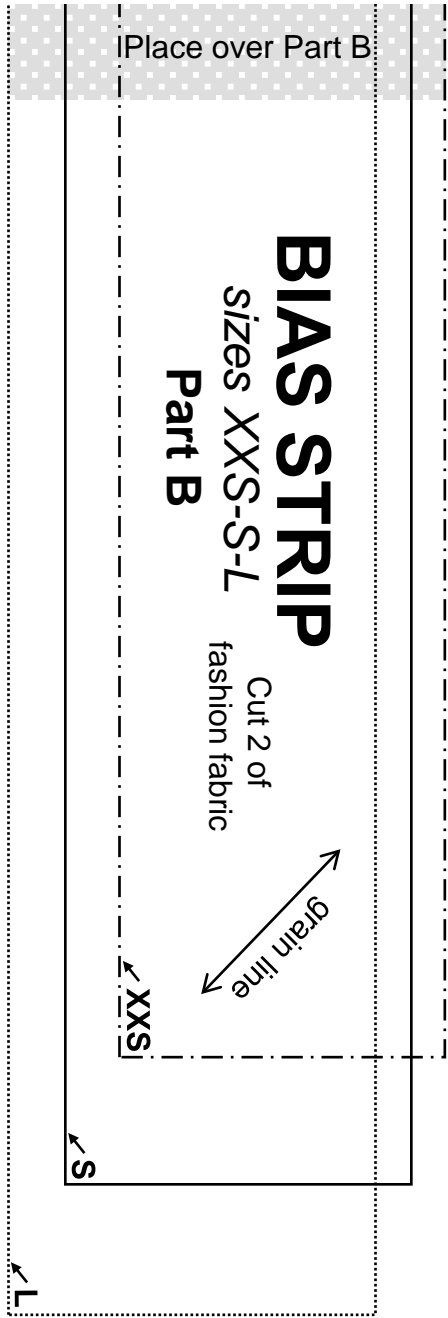
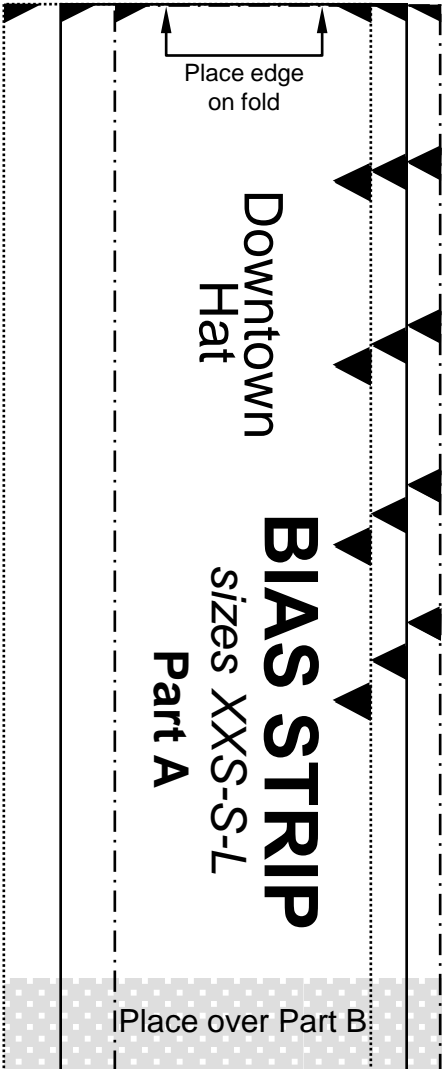
XXS ↘

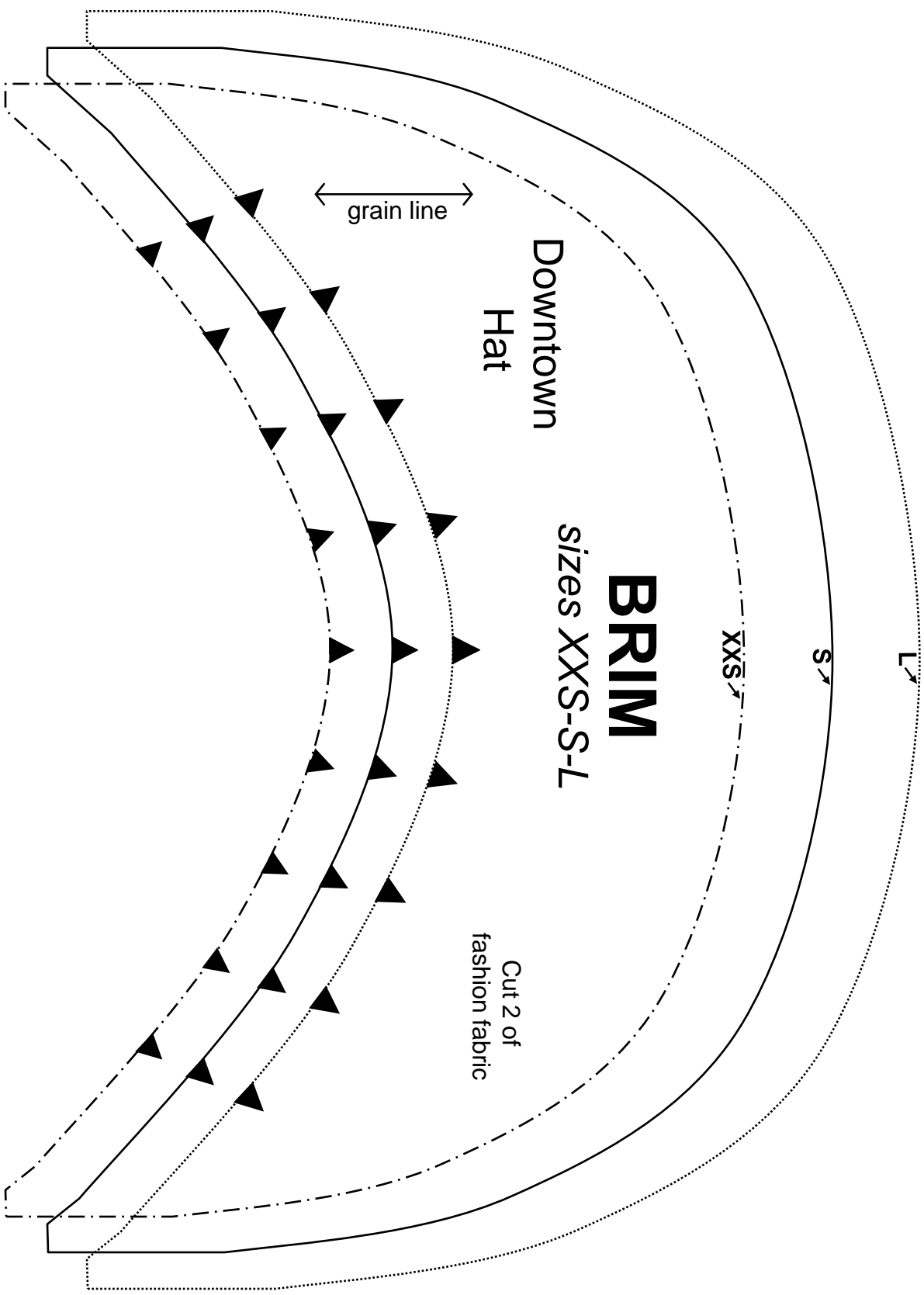
S ↘

L ↘









Downtown
Hat

BRIM
sizes XXS-S-L

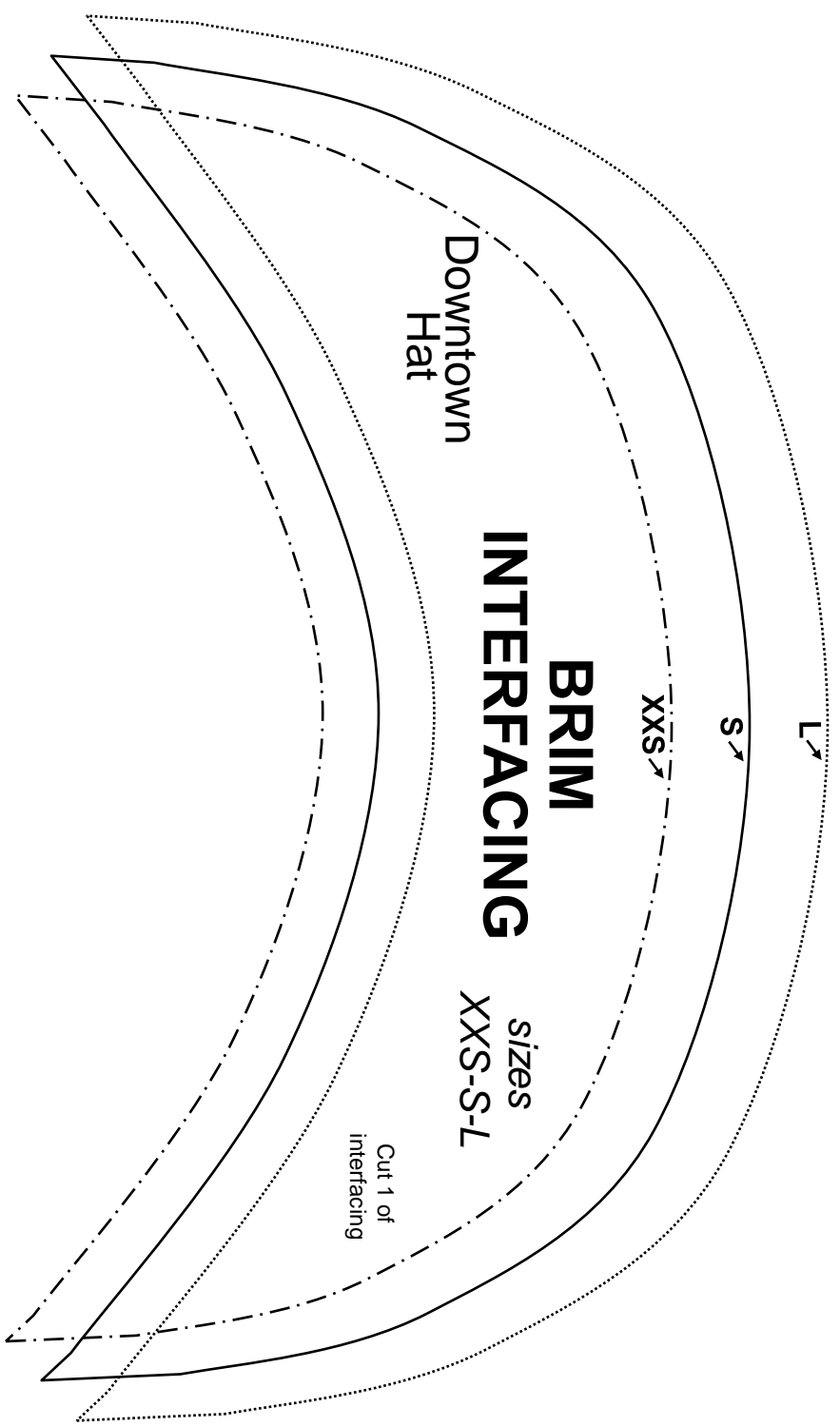
Cut 2 of
fashion fabric

grain line

L

S

XXS



Downtown
Hat

**BRIM
INTERFACING**

sizes
XXS-S-L

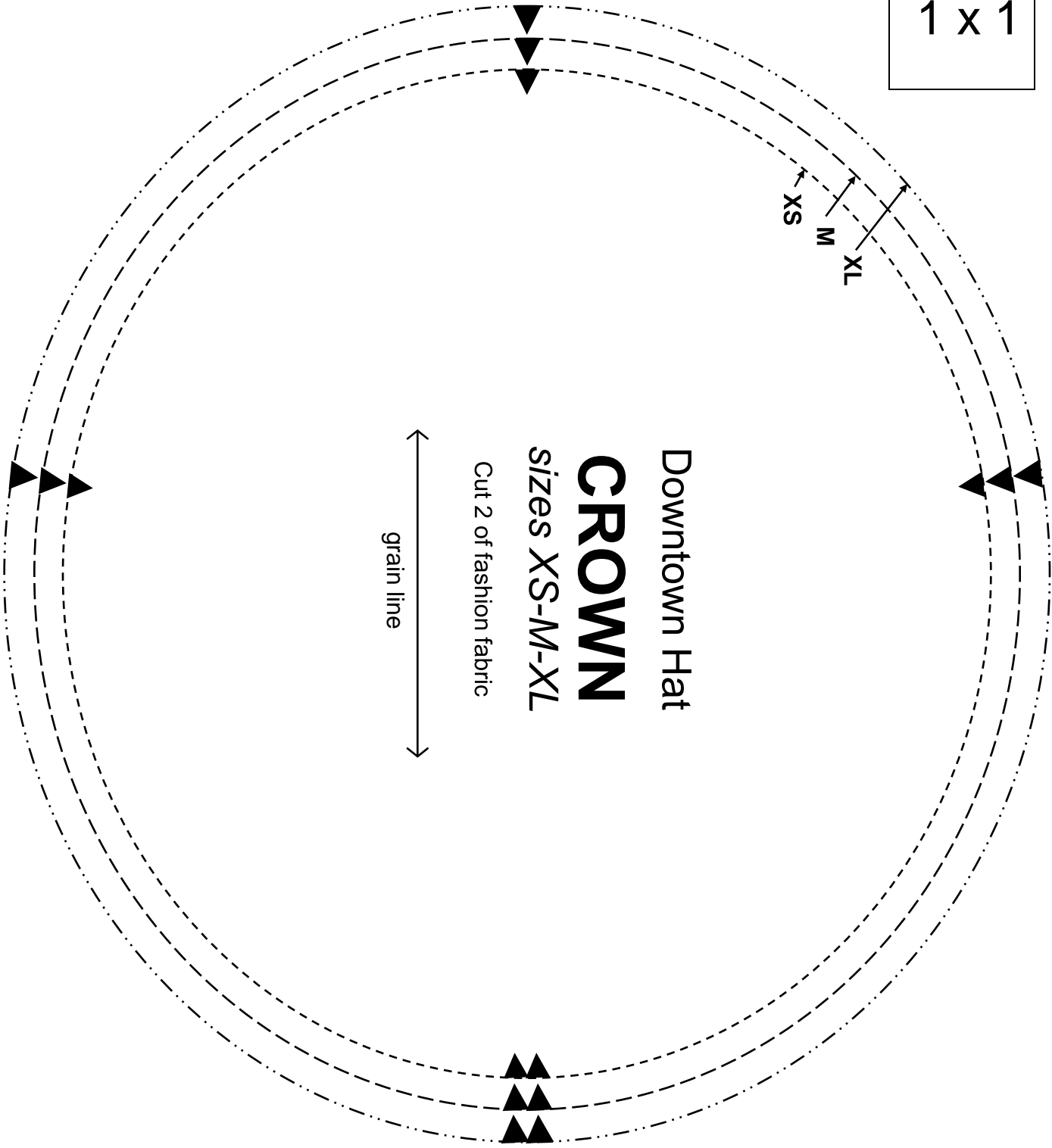
Cut 1 of
interfacing

L

S

XXS

1 x 1



Downtown
Hat

INNER SIDE BAND

sizes XS-M-XL
Part A

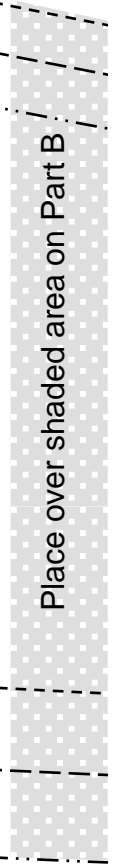
Cut 1 of fashion fabric

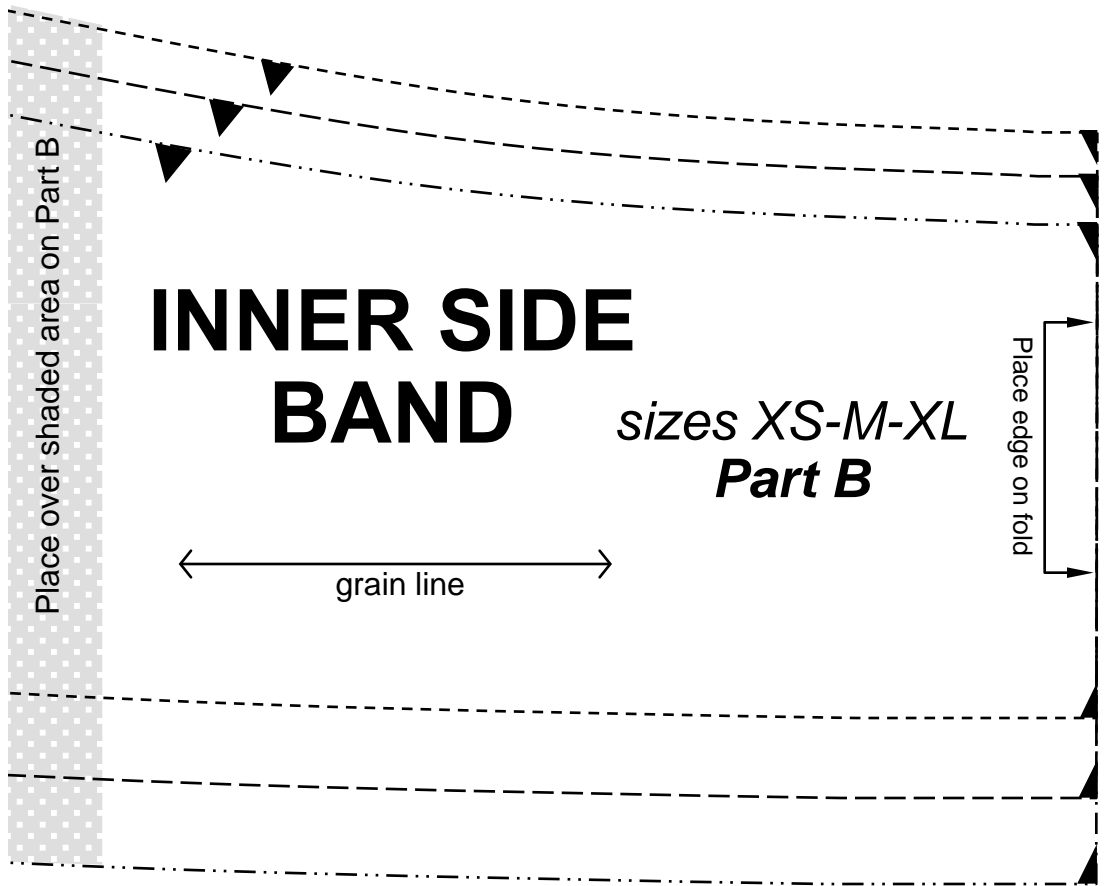
Place over shaded area on Part B

XS

M

XL





Downtown
Hat

OUTER SIDE BAND

sizes XS-M-XL

Part A

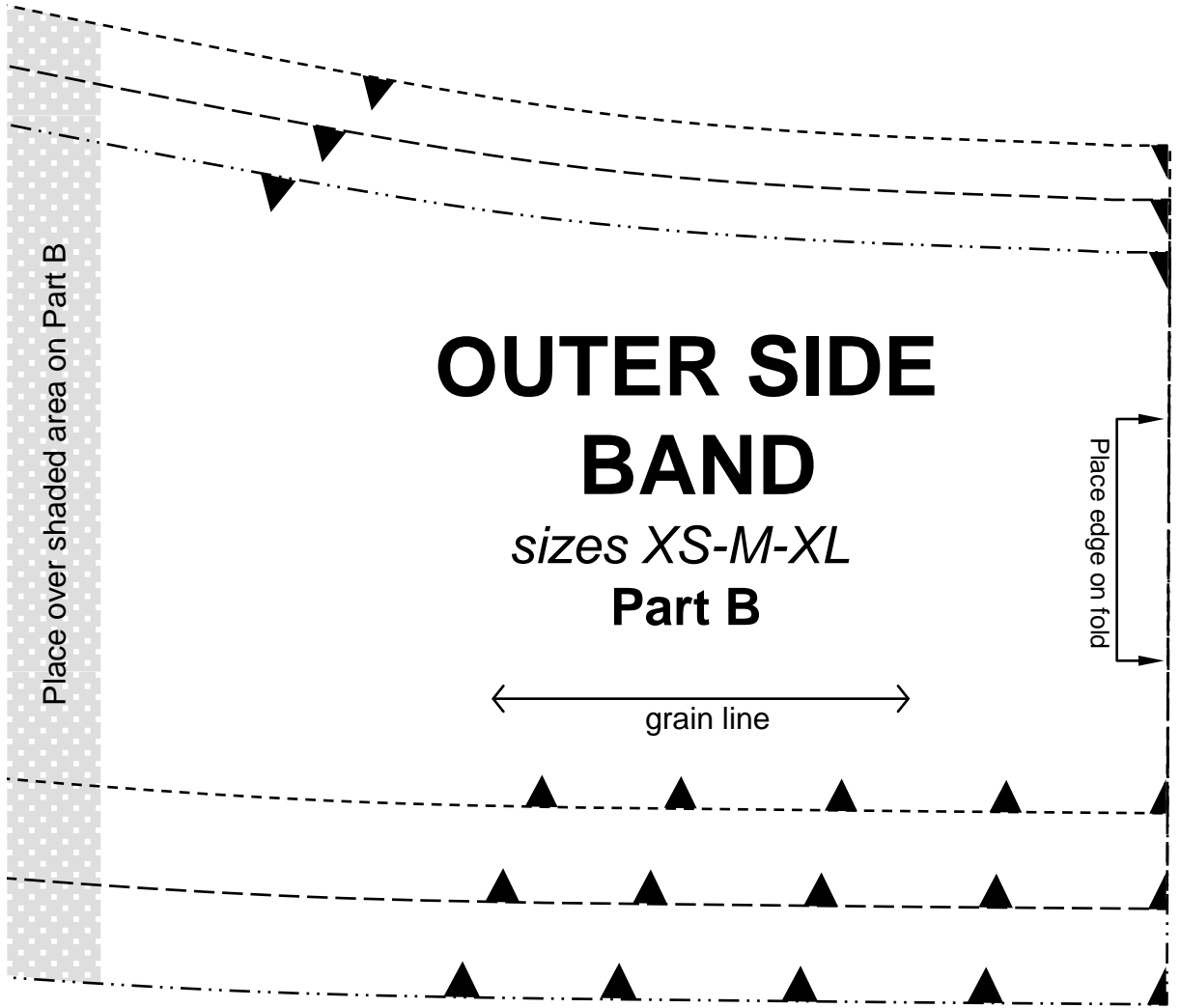
Cut 1 of fashion fabric

XS

M

XL

Place over shaded area on Part B



Place over shaded area on Part B

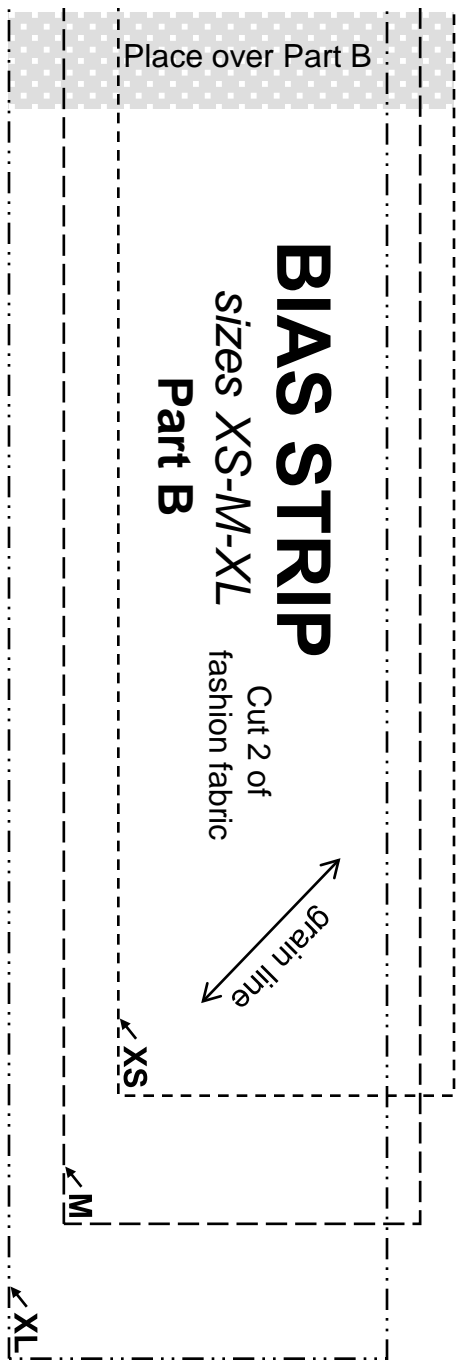
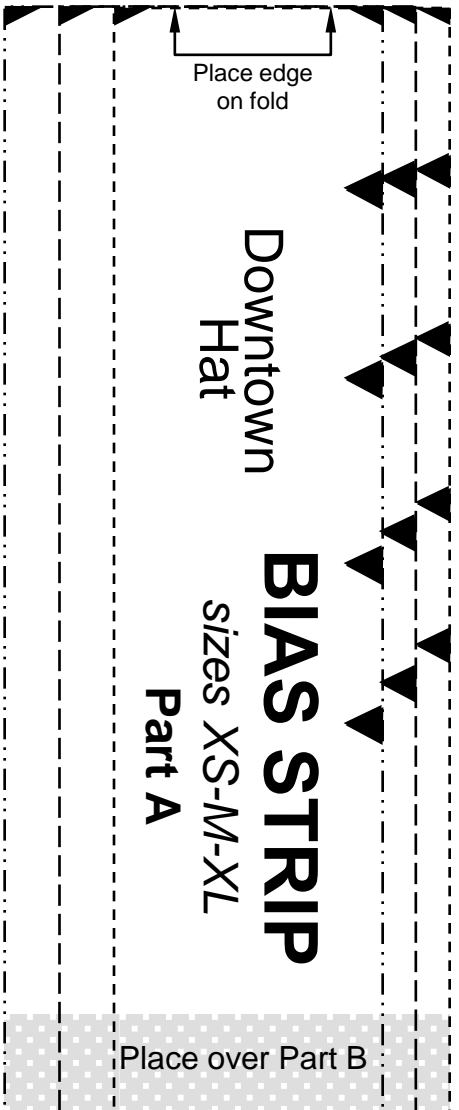
OUTER SIDE BAND

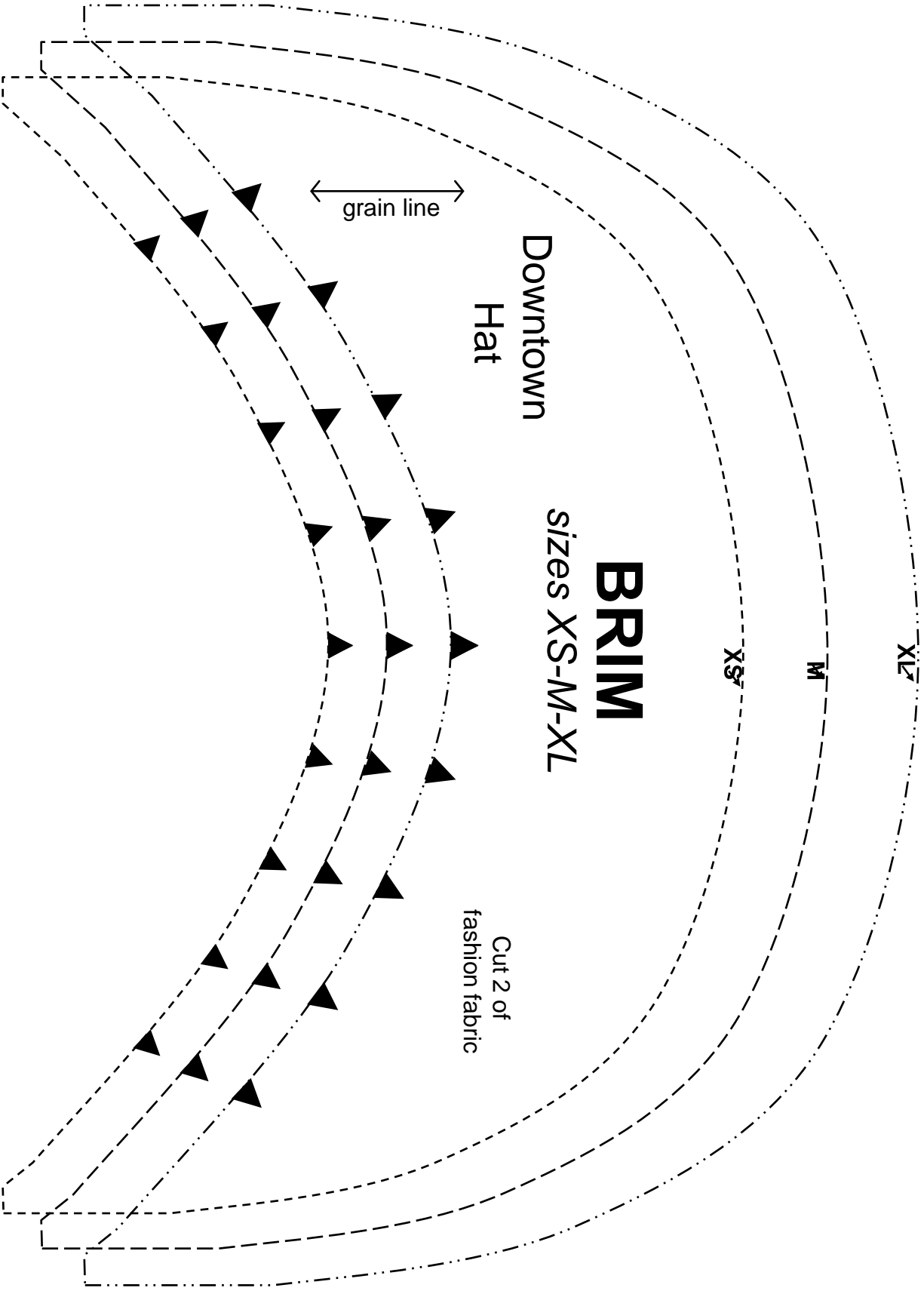
sizes XS-M-XL

Part B

← grain line →

Place edge on fold





Downtown
Hat

BRIM

sizes XS-M-XL

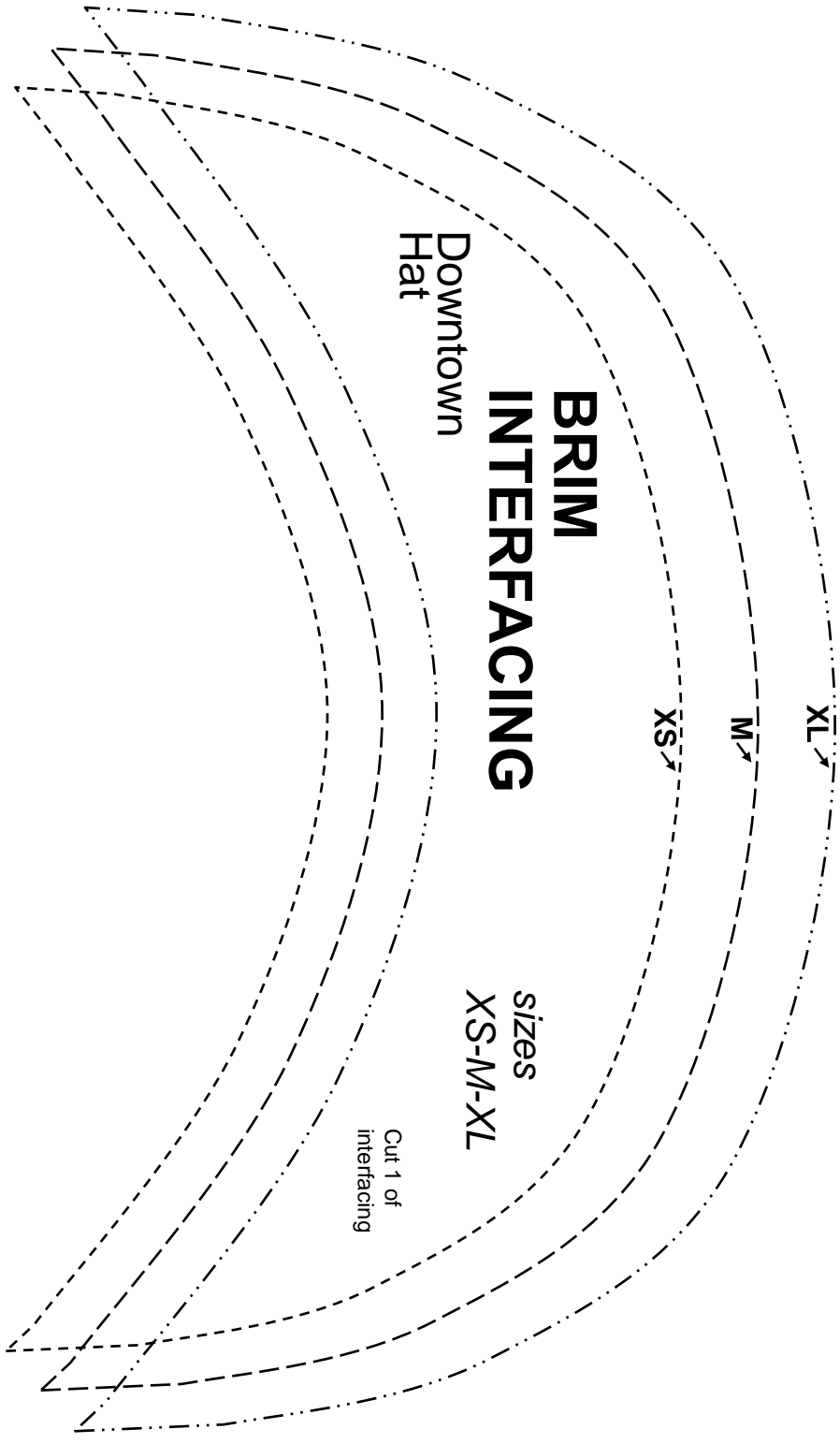
Cut 2 of
fashion fabric

grain line

XS

M

XL



Downtown
Hat

**BRIM
INTERFACING**

sizes
XS-M-XL

Cut 1 of
interfacing

XS

M

XL