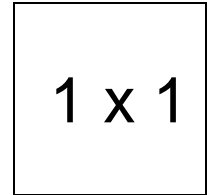


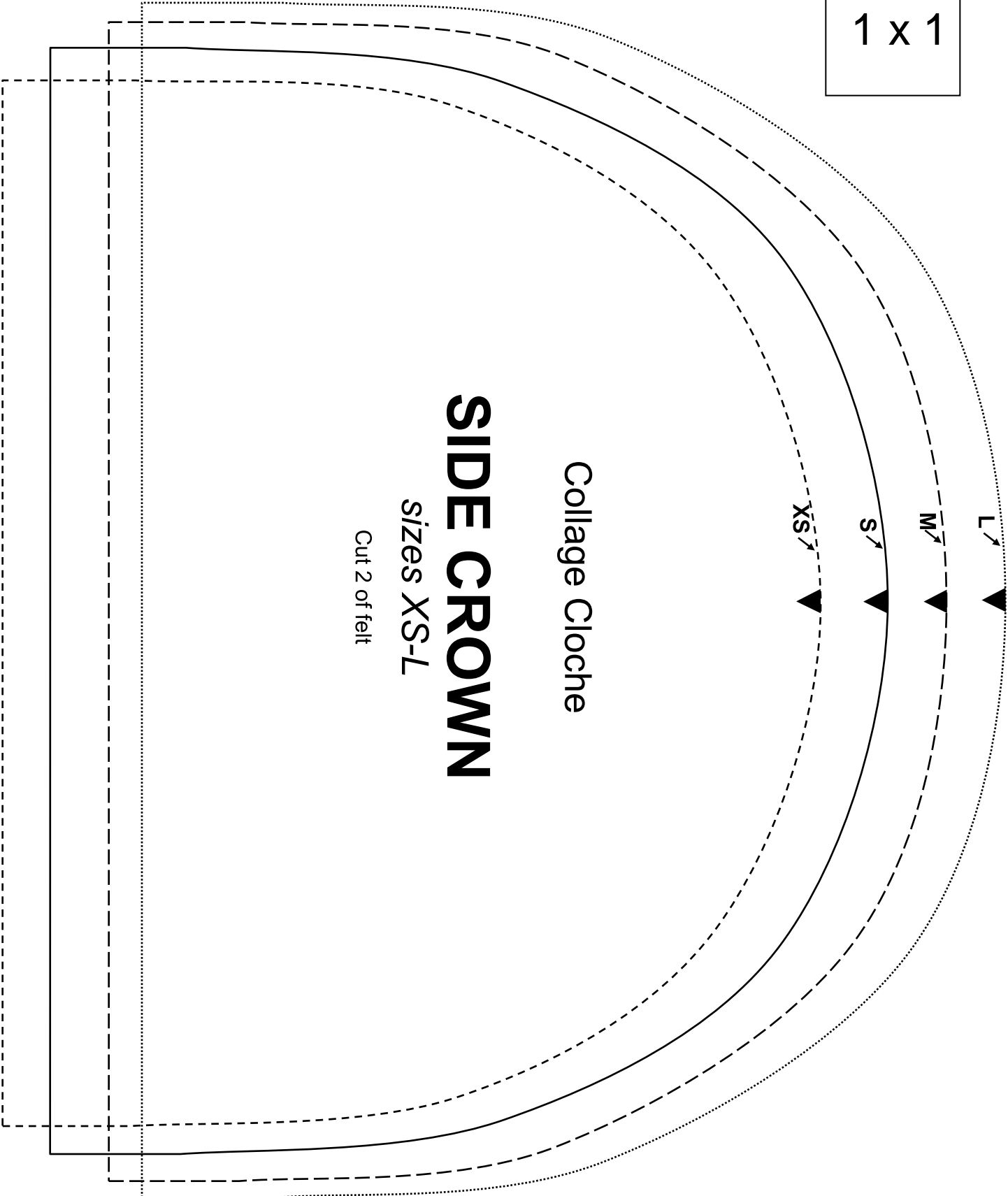
Collage Cloche

Important note:

The pattern pieces are designed to be printed at 100%. Before printing the patterns, make sure that page scaling is set to none in Adobe Acrobat print window. To be sure that your patterns are going to print at the correct size, measure the box on the first pattern page. It should measure exactly 1 inch by 1 inch.



1 x 1



Collage Cloche

SIDE CROWN

sizes XS-L

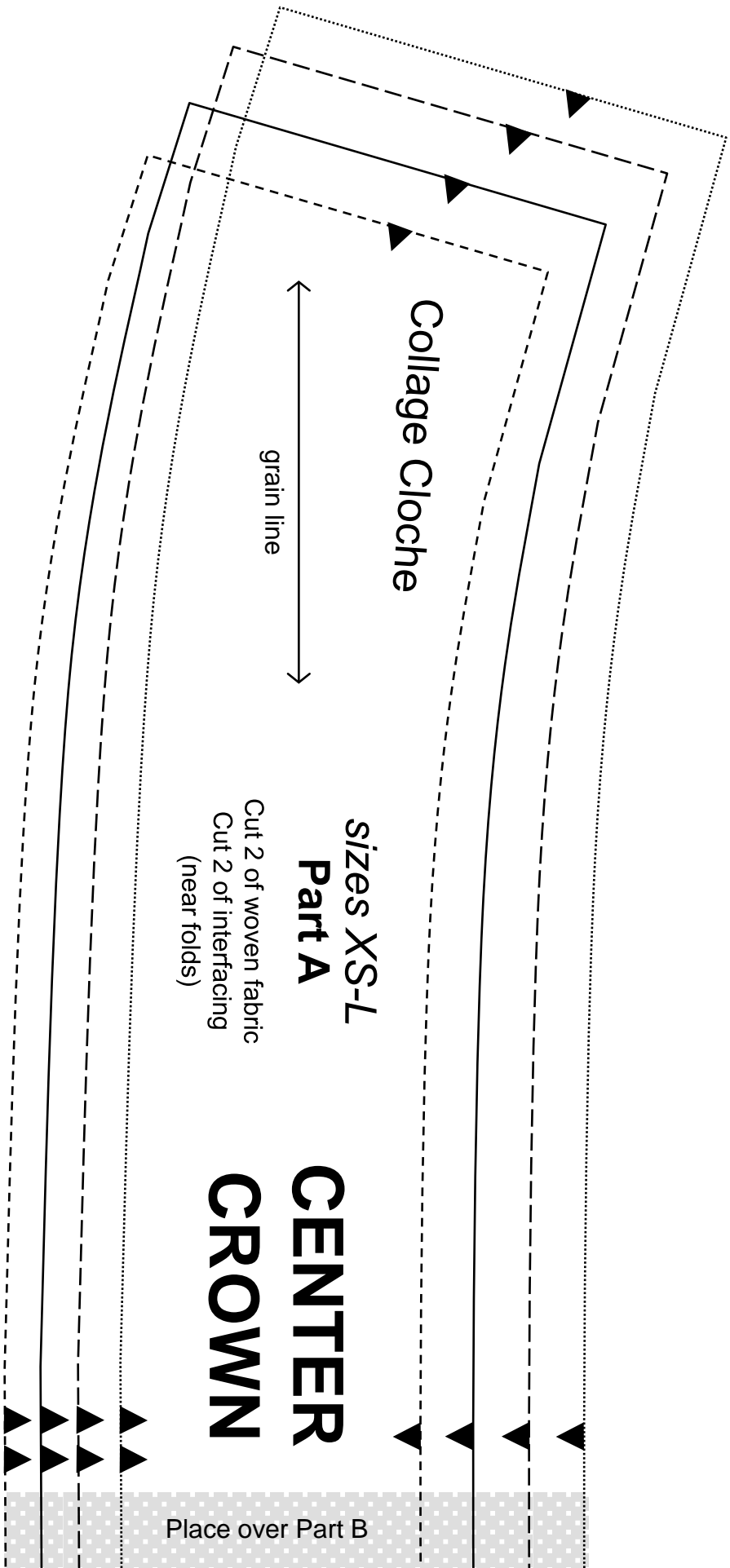
Cut 2 of felt

L ↙

M ↙

S ↙

XS ↙



Collage Cloche

grain line

sizes XS-L
Part A

Cut 2 of woven fabric
Cut 2 of interfacing
(near folds)

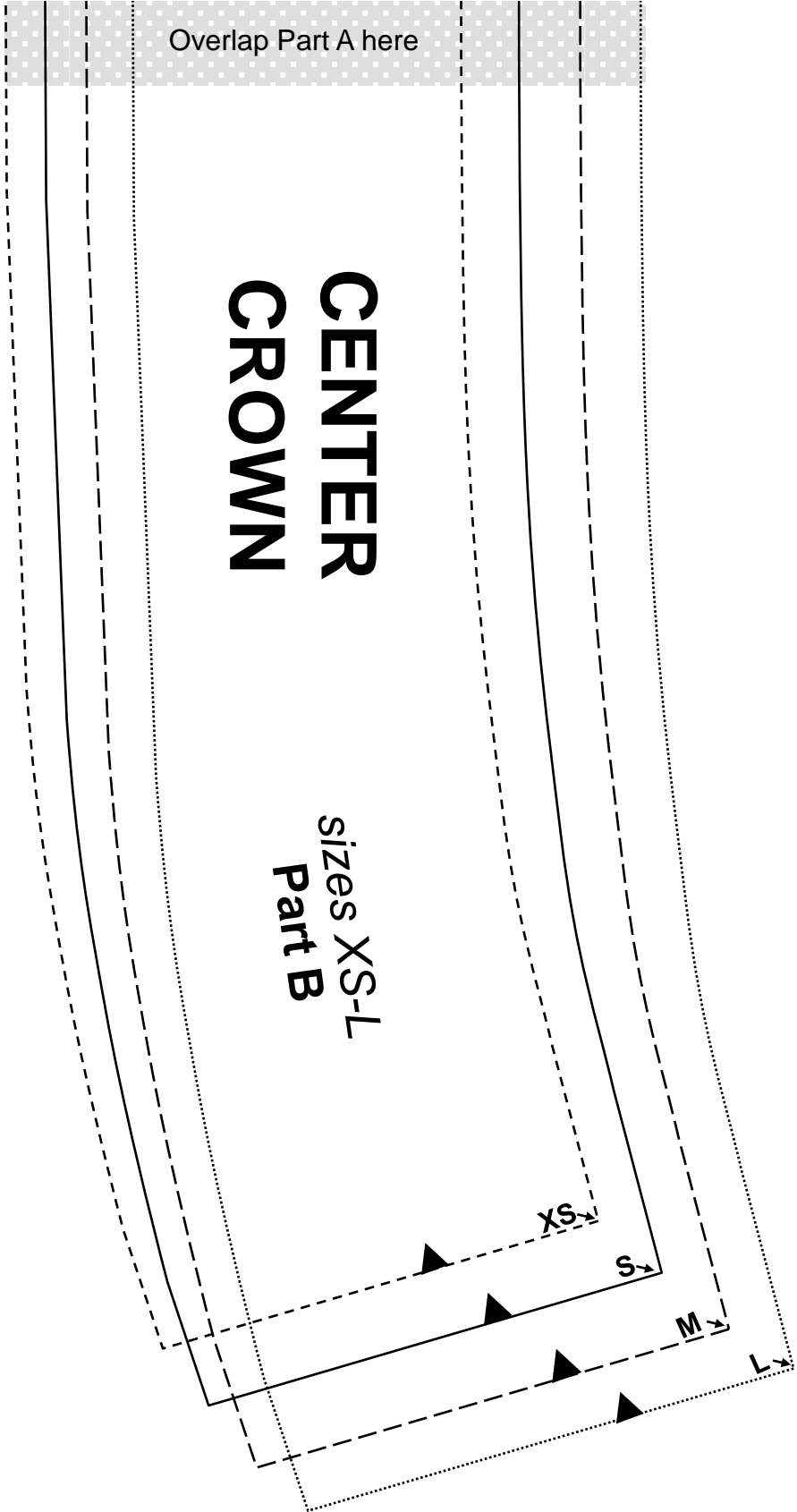
CENTER
CROWN

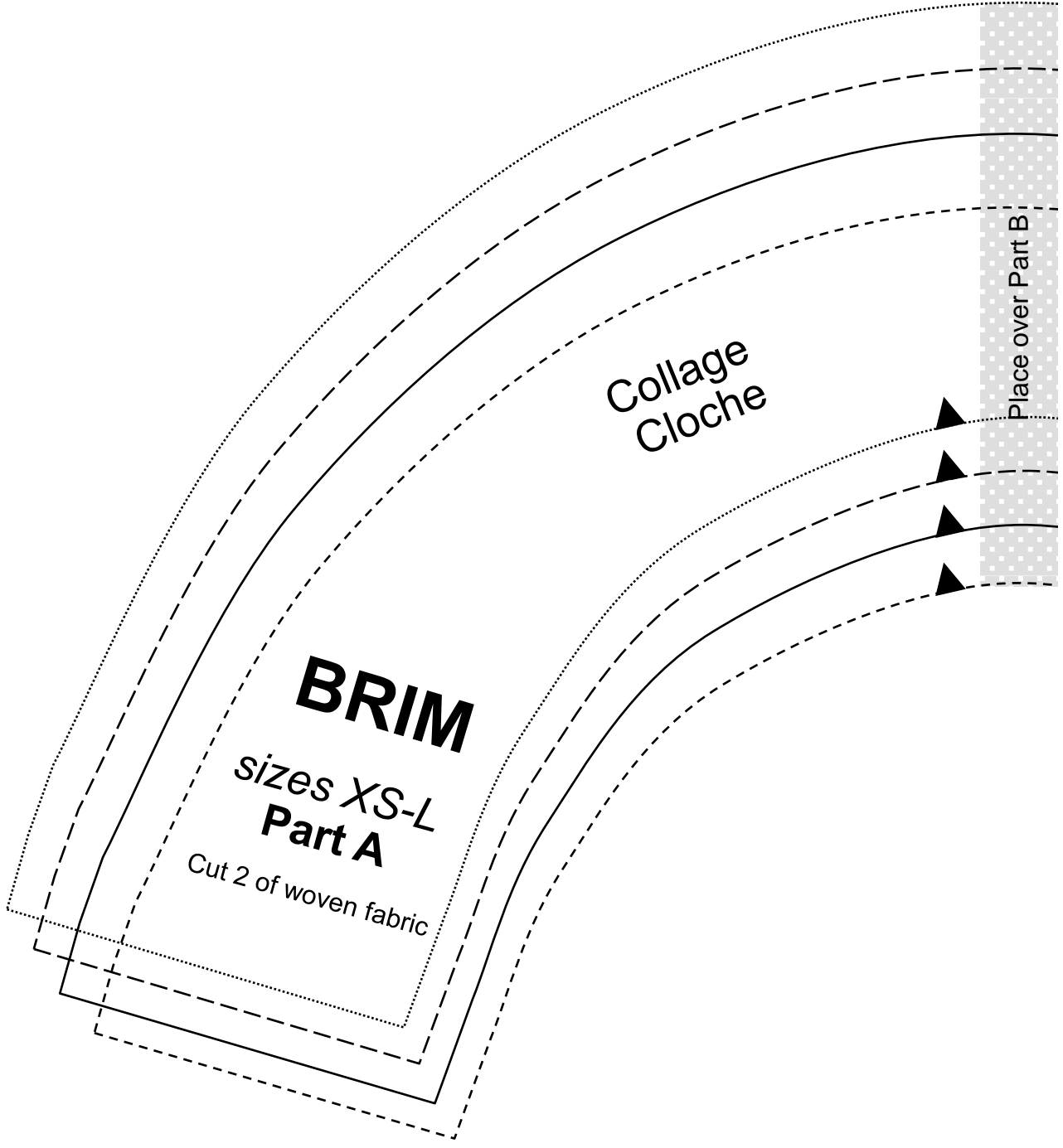
Place over Part B

Overlap Part A here

CENTER CROWN

sizes XS-L
Part B





BRIM

sizes XS-L
Part A

Cut 2 of woven fabric

Collage
Cloche

Place over Part B

