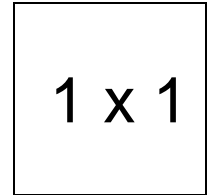


# Basic Bucket Hat

## Important note:

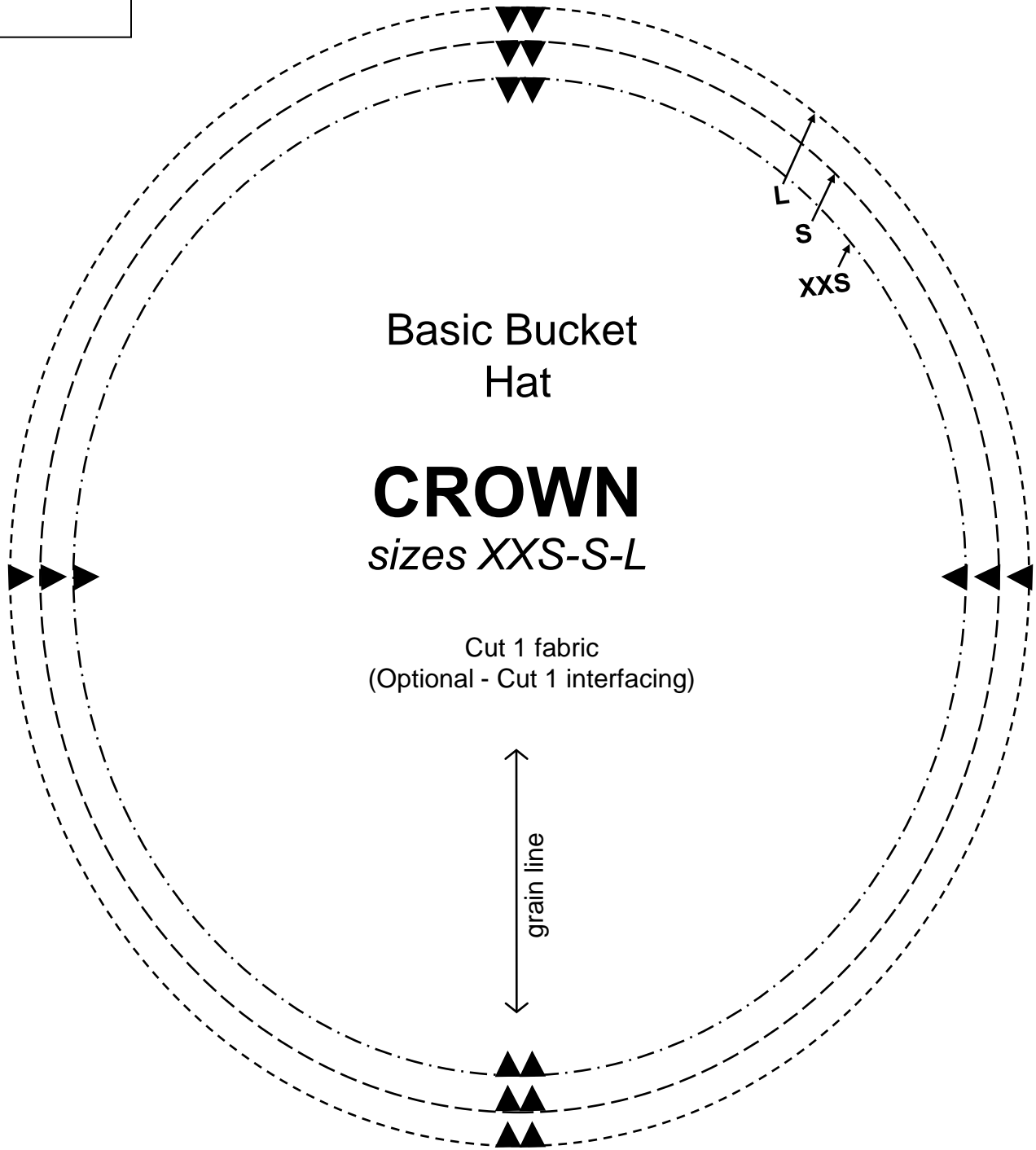
The pattern pieces are designed to be printed at 100%. Before printing the patterns, make sure that page scaling is set to none in Adobe Acrobat print window. To be sure that your patterns are going to print at the correct size, measure the box on the first pattern page. It should measure exactly 1 inch by 1 inch.

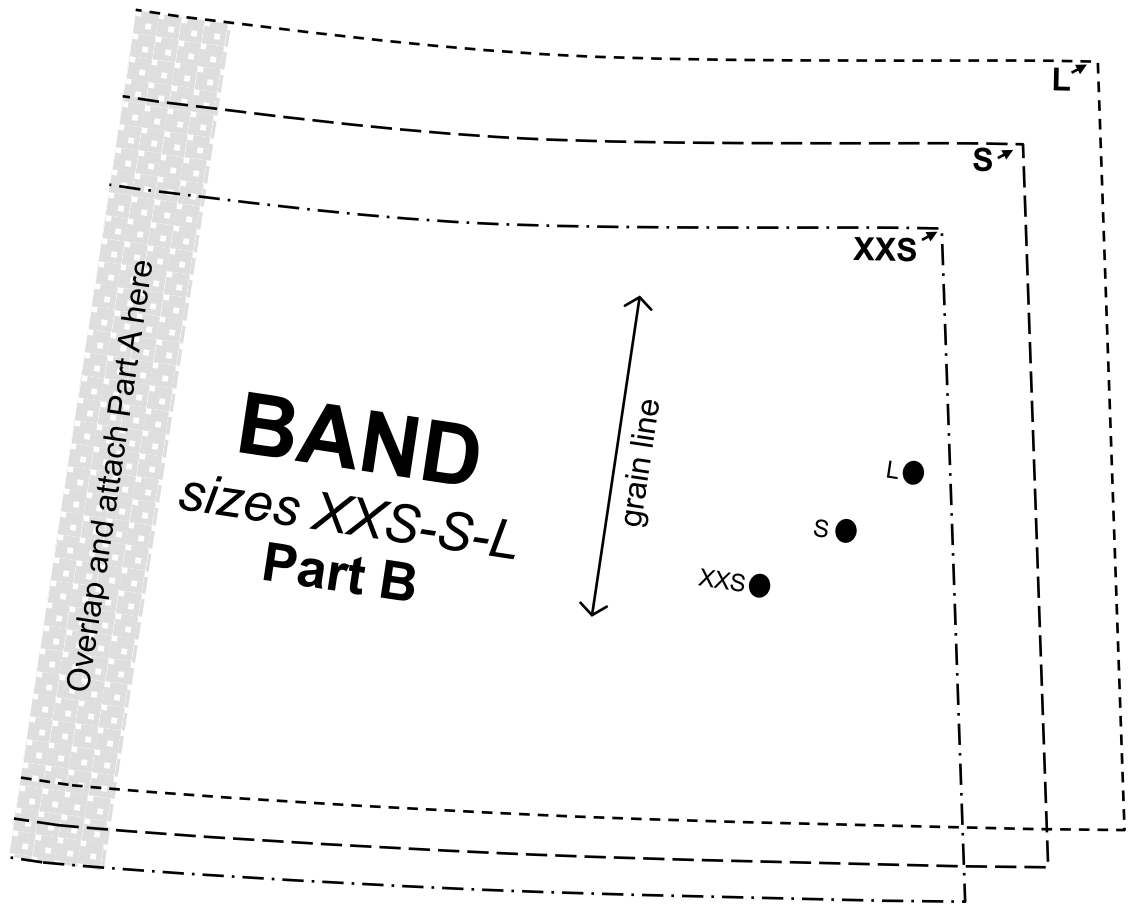
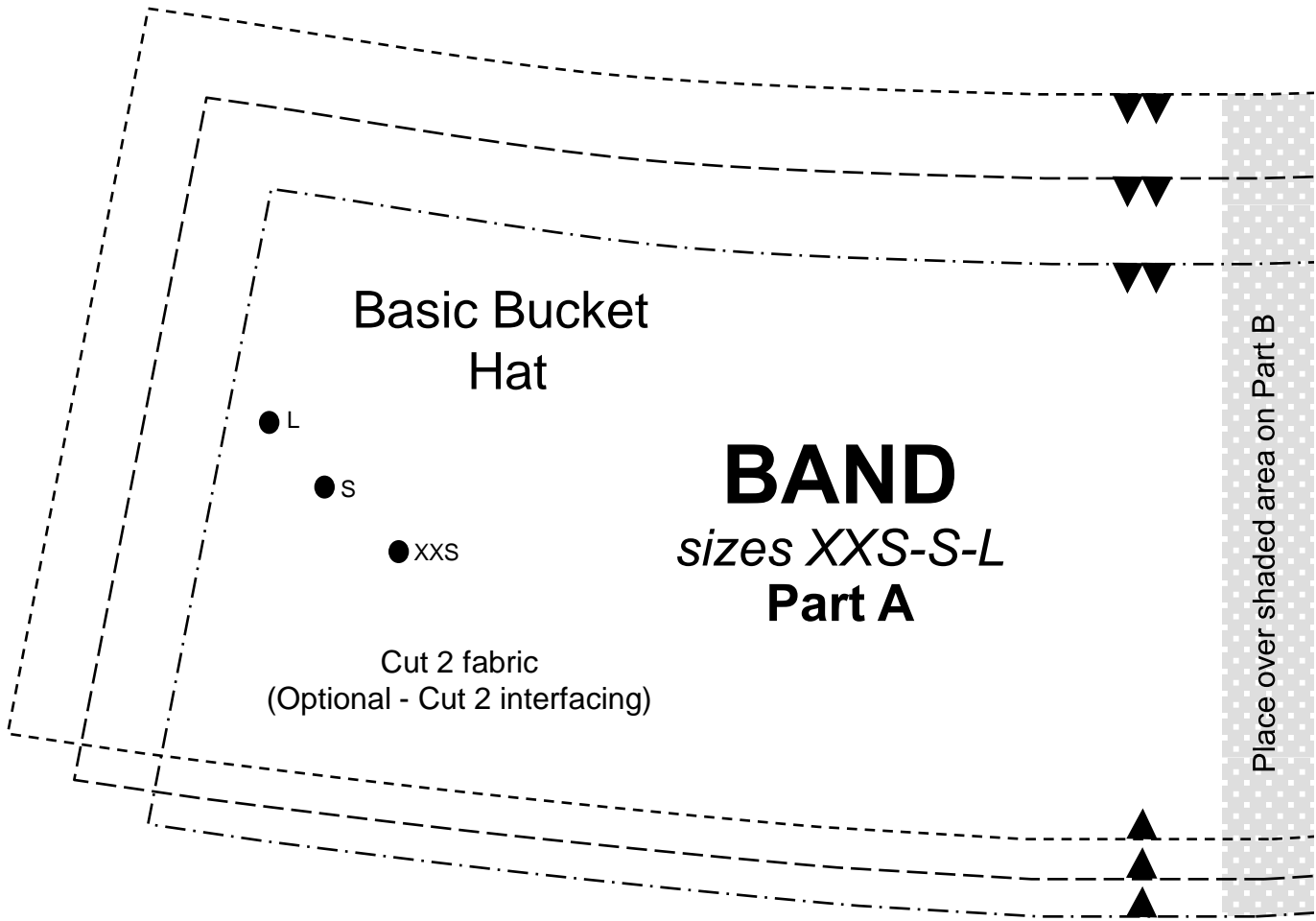


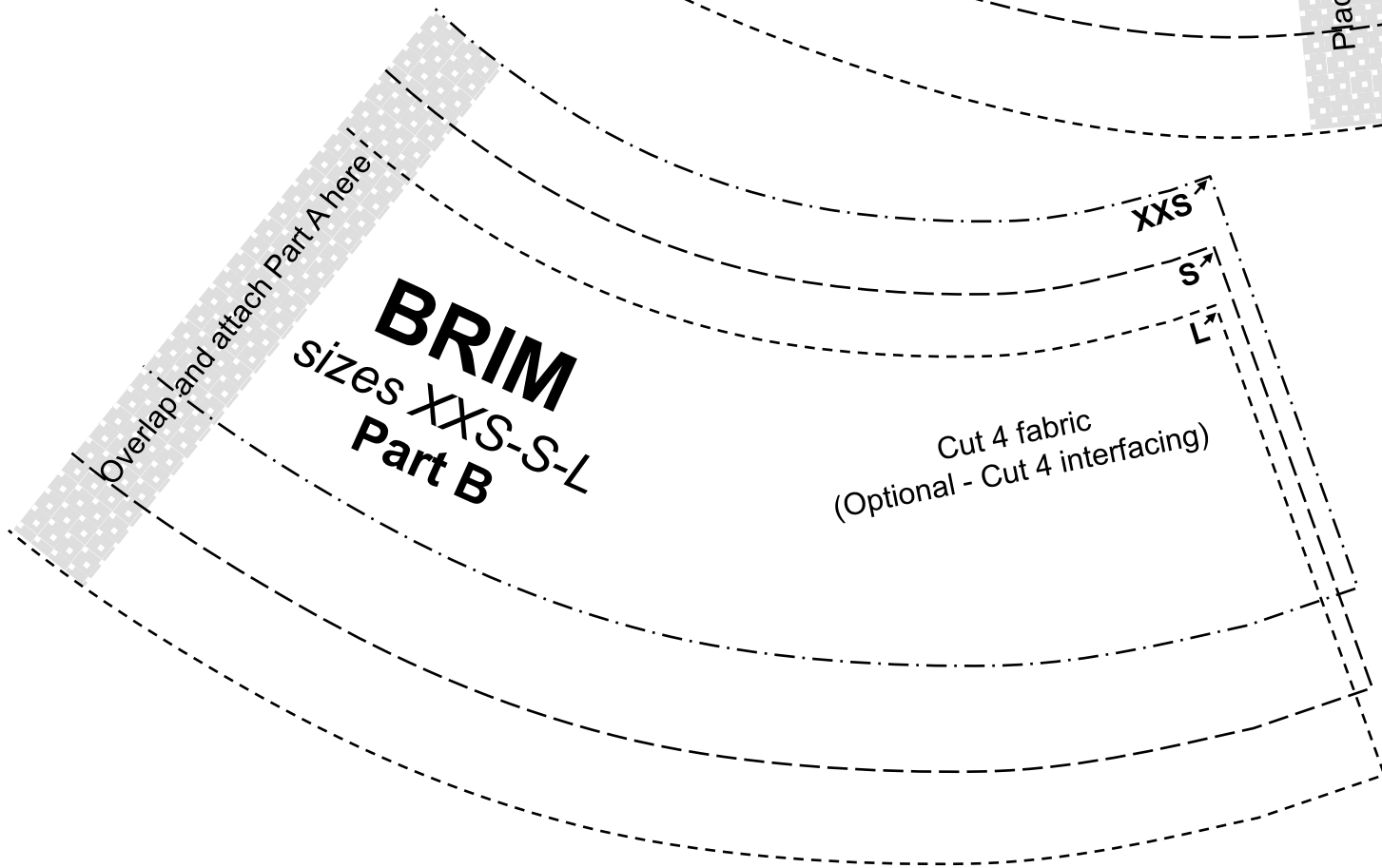
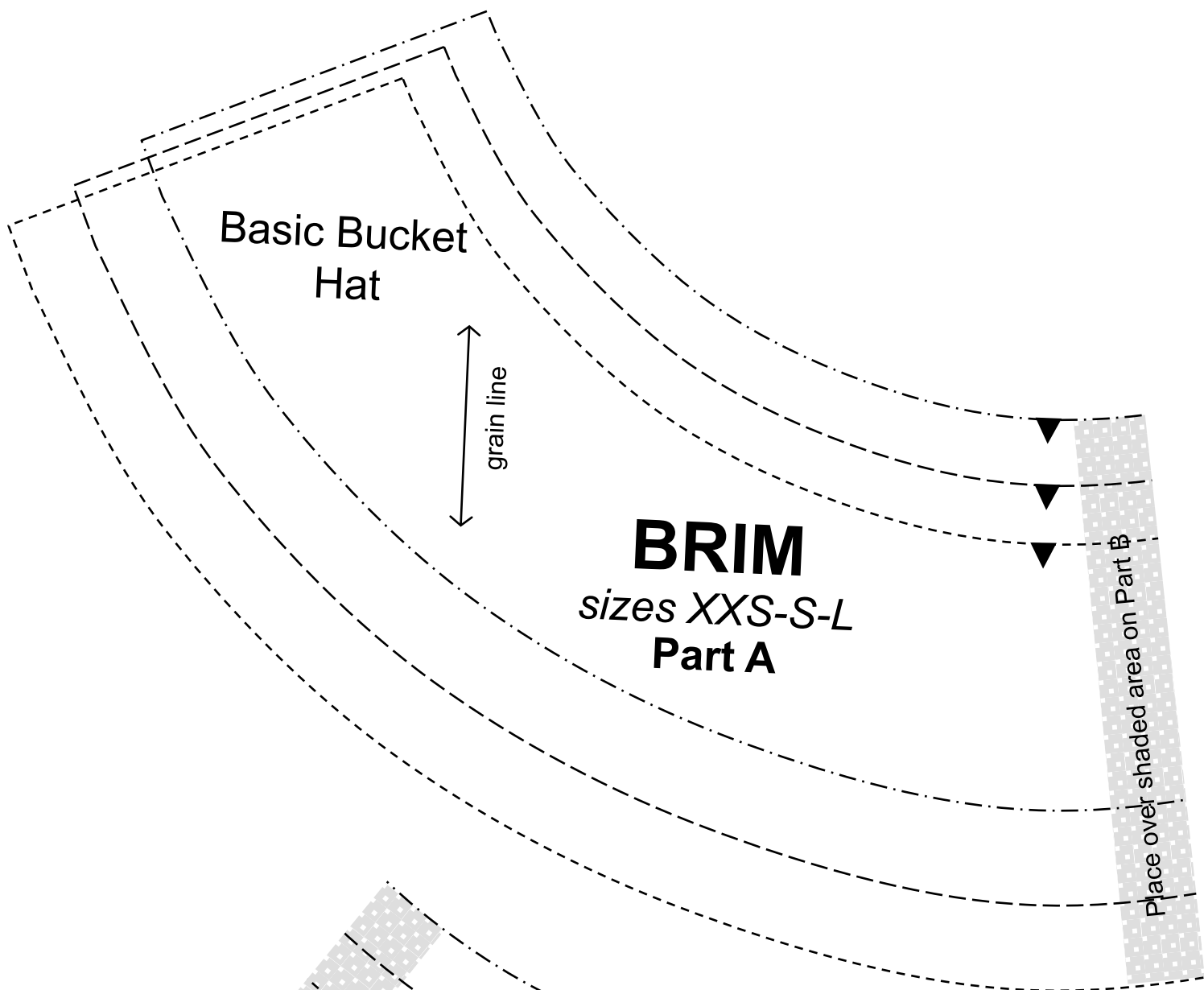
For sizes **XXS**, **S**, and **L**: Print pages 2-4

For sizes **XS**, **M**, and **XL**: Print pages 5-7

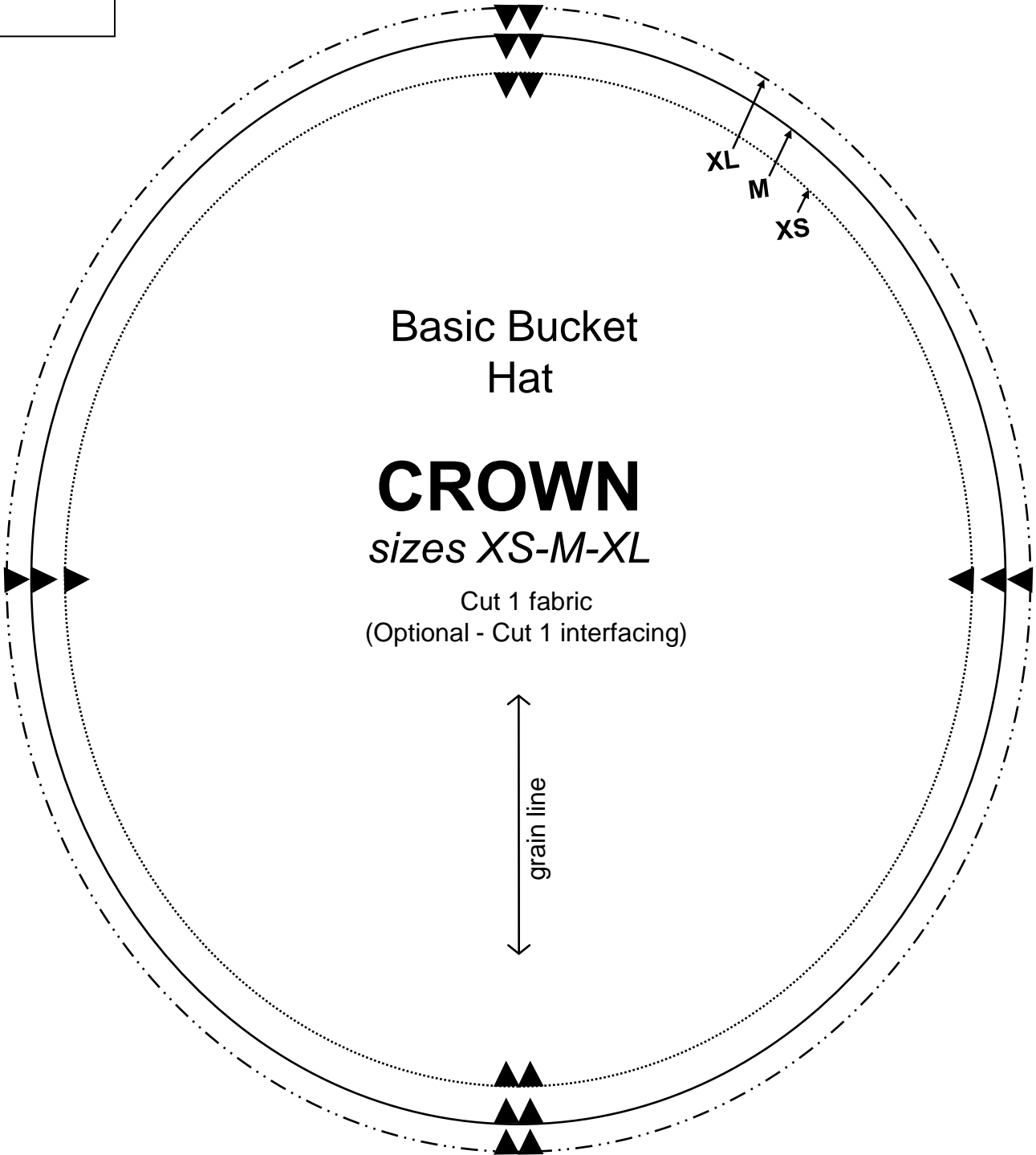
1 x 1

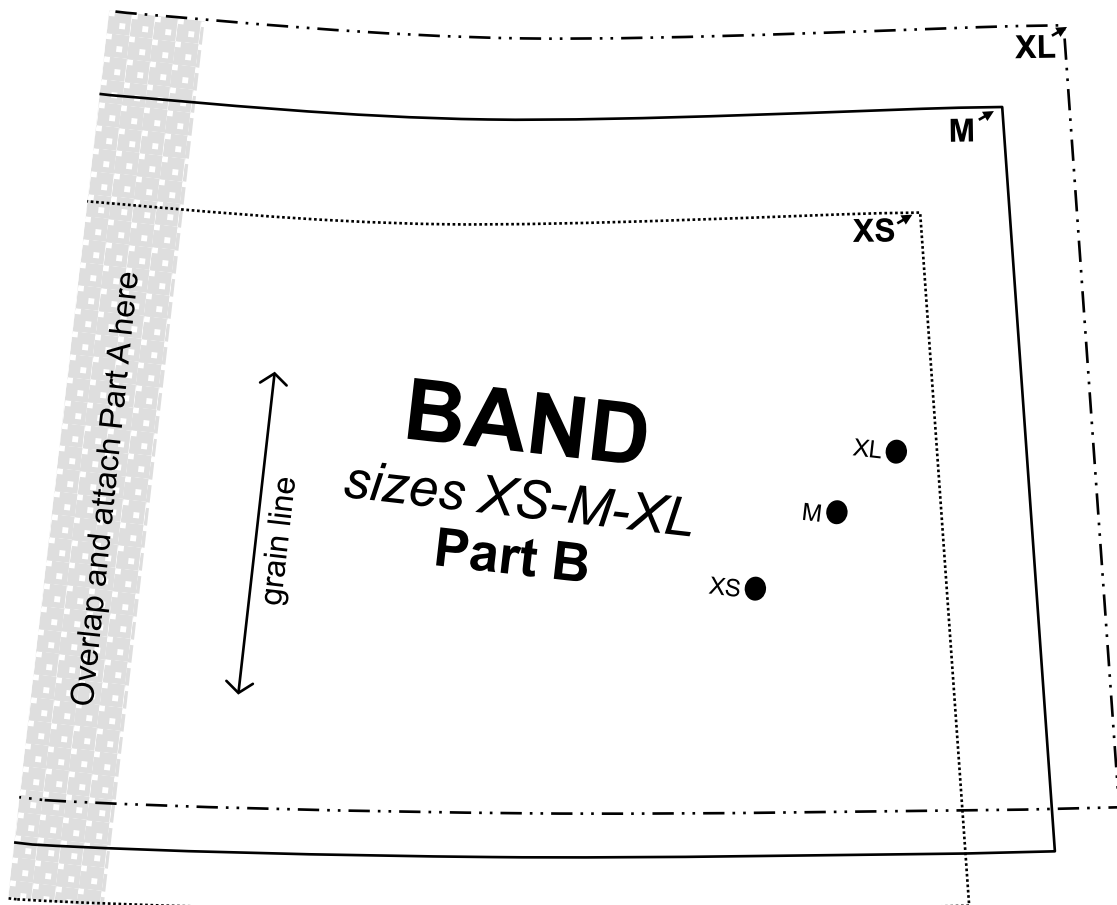
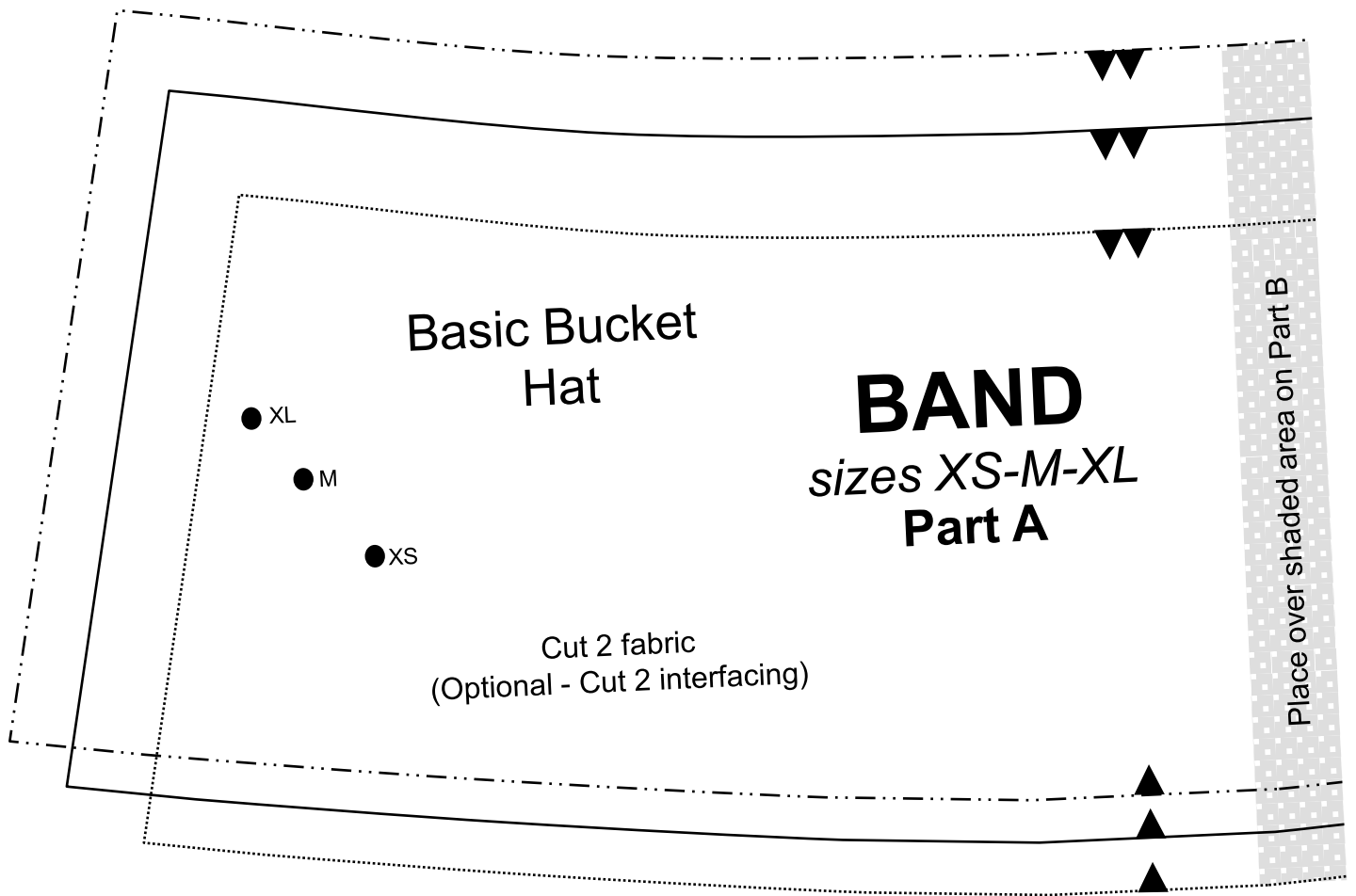






1 x 1





Basic  
Bucket Hat

**BRIM**  
sizes XS-M-XL  
**Part A**

Place over shaded area on Part B

Overlap and attach Part A here

Sizes **BRIM**  
XS-M-XL  
**Part B**

(Optional - Cut 4 fabric  
- Cut 4 interfacing)

grain line

XS  
M  
XL

