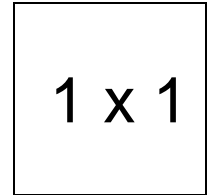


Andrea/Andrew Hat

Important note:

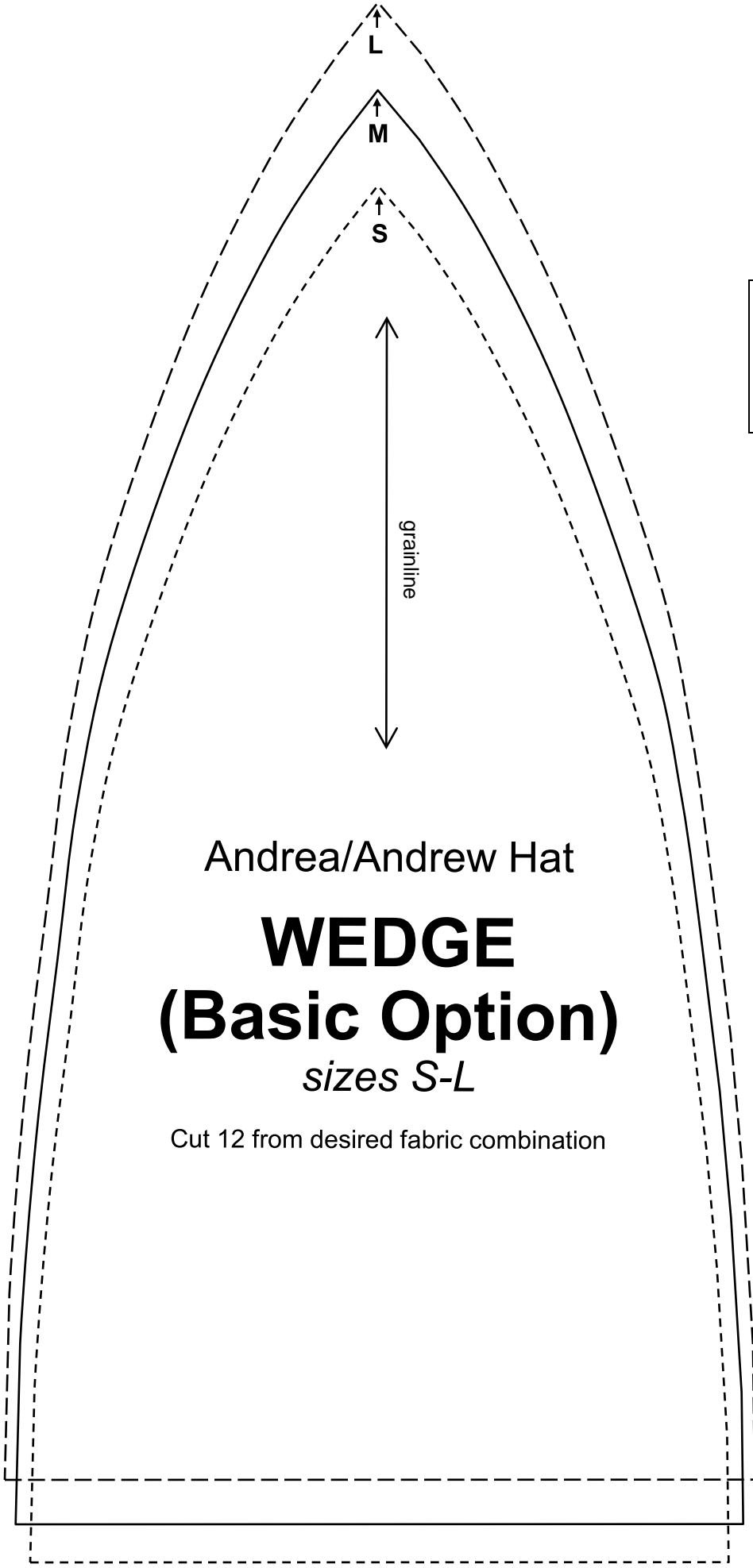
The pattern pieces are designed to be printed at 100%. Before printing the patterns, make sure that page scaling is set to none in Adobe Acrobat print window. To be sure that your patterns are going to print at the correct size, measure the box on the first pattern page. It should measure exactly 1 inch by 1 inch.



Basic Option: Print page 2

Pointed Option: Print pages 3-4

Elongated Option: Print pages 5-7

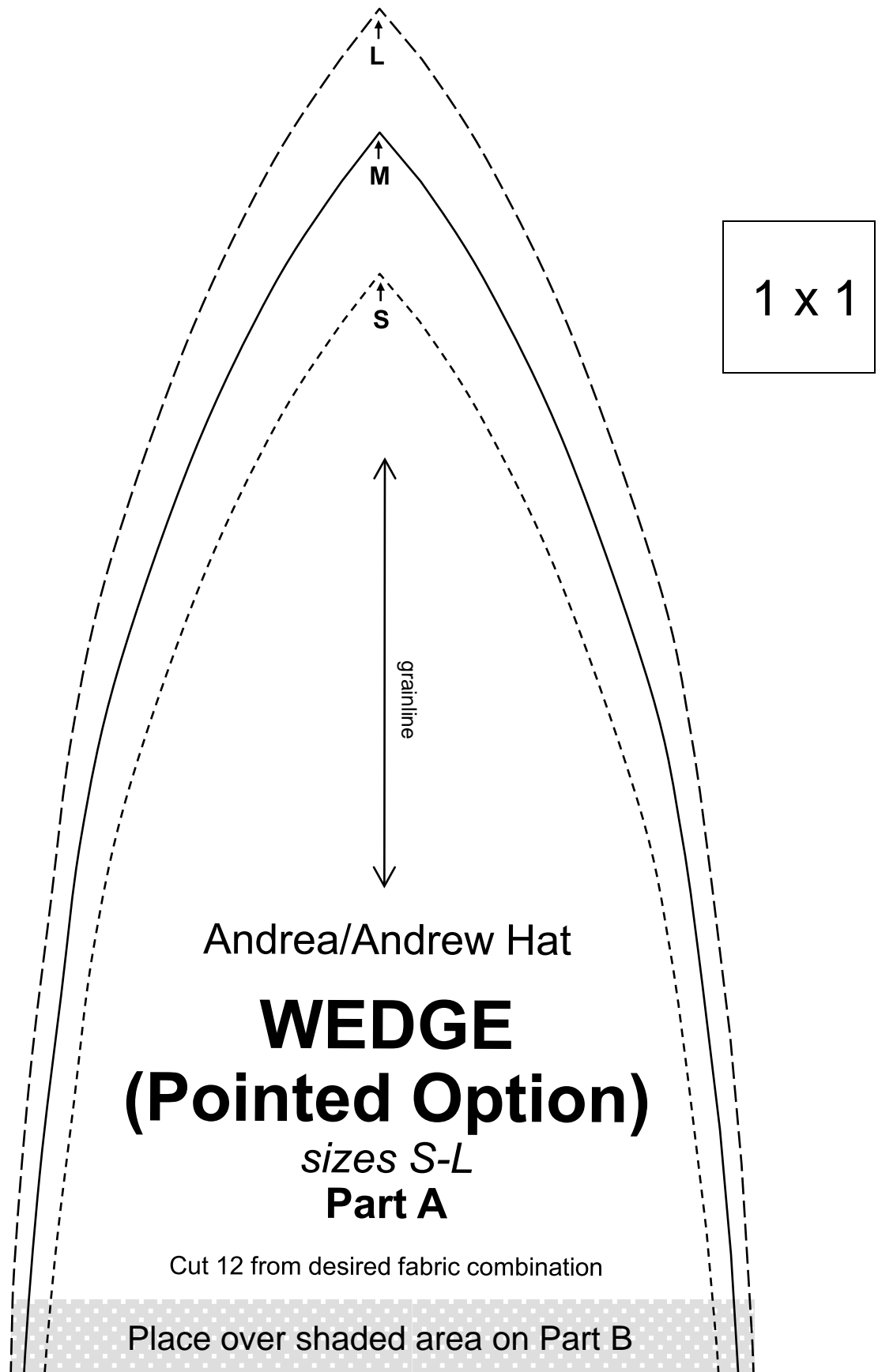


1 x 1

Andrea/Andrew Hat

WEDGE
(Basic Option)
sizes S-L

Cut 12 from desired fabric combination



L

M

S

1 x 1

grainline

Andrea/Andrew Hat

WEDGE
(Pointed Option)

sizes S-L

Part A

Cut 12 from desired fabric combination

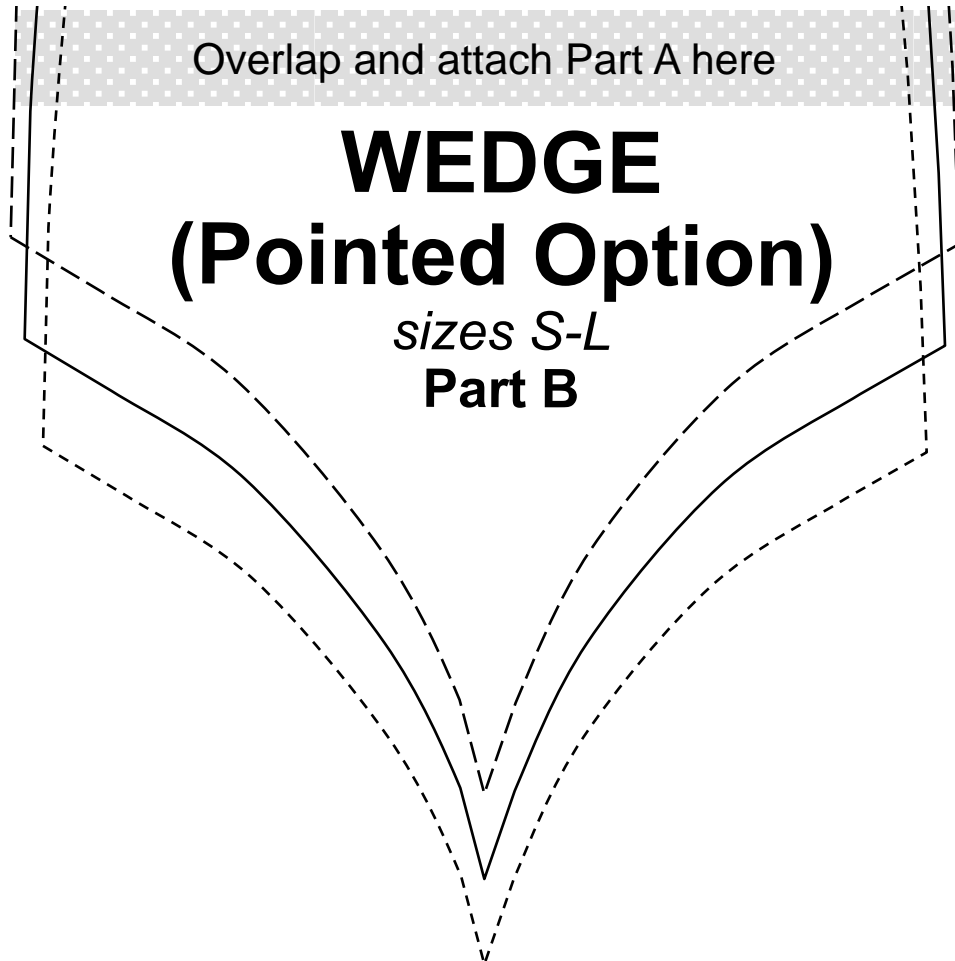
Place over shaded area on Part B

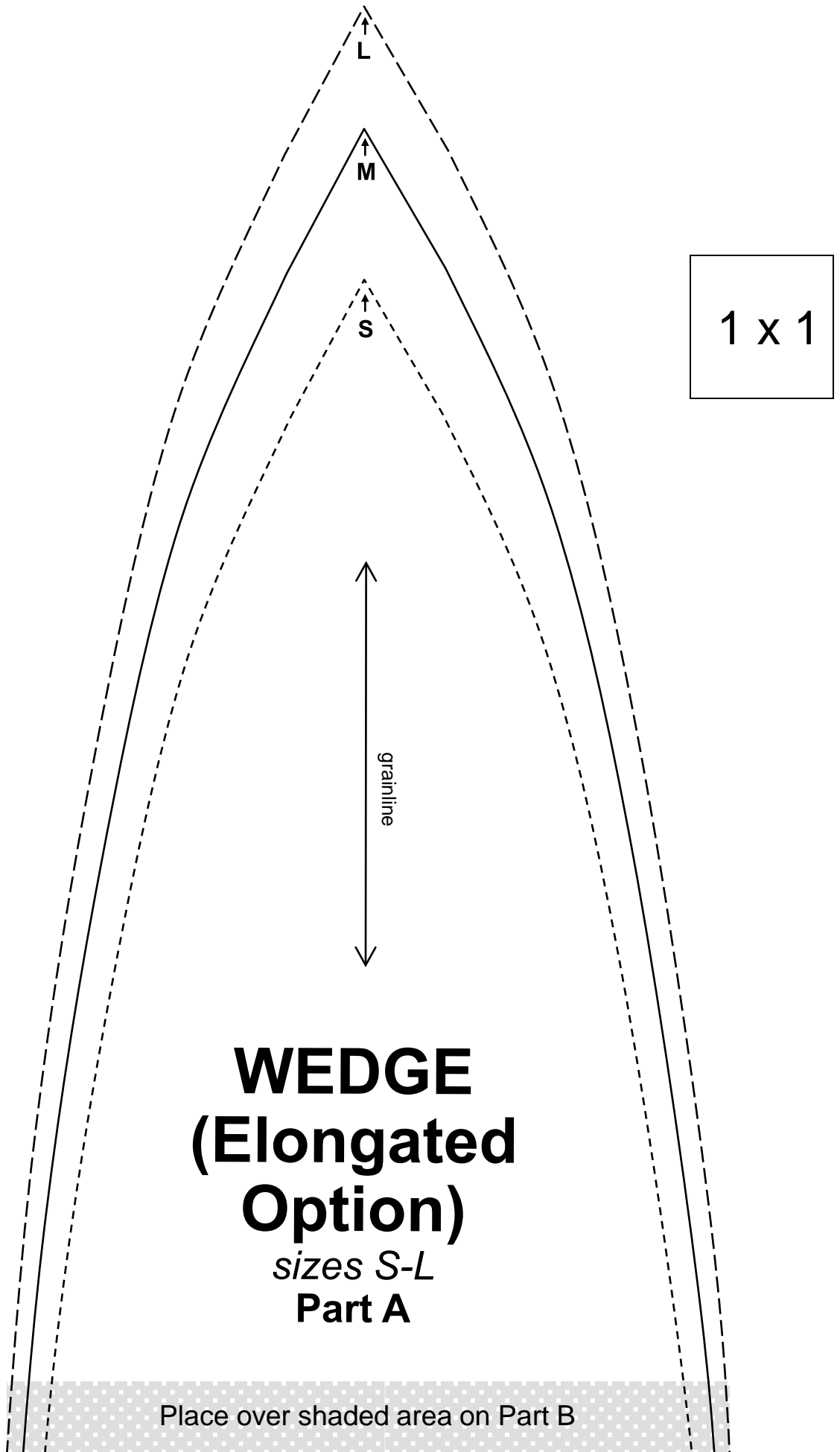
Overlap and attach Part A here

WEDGE (Pointed Option)

sizes S-L

Part B





L

M

S

1 x 1

grainline

**WEDGE
(Elongated
Option)**

sizes S-L

Part A

Place over shaded area on Part B

Overlap and attach Part A here

Andrea/Andrew Hat

WEDGE
(Elongated Option)

sizes S-L

Part B

Cut 12 from desired fabric combination

Place over shaded area on Part C

Overlap and attach Part B here

**WEDGE
(Elongated
Option)**

sizes S-L

Part C