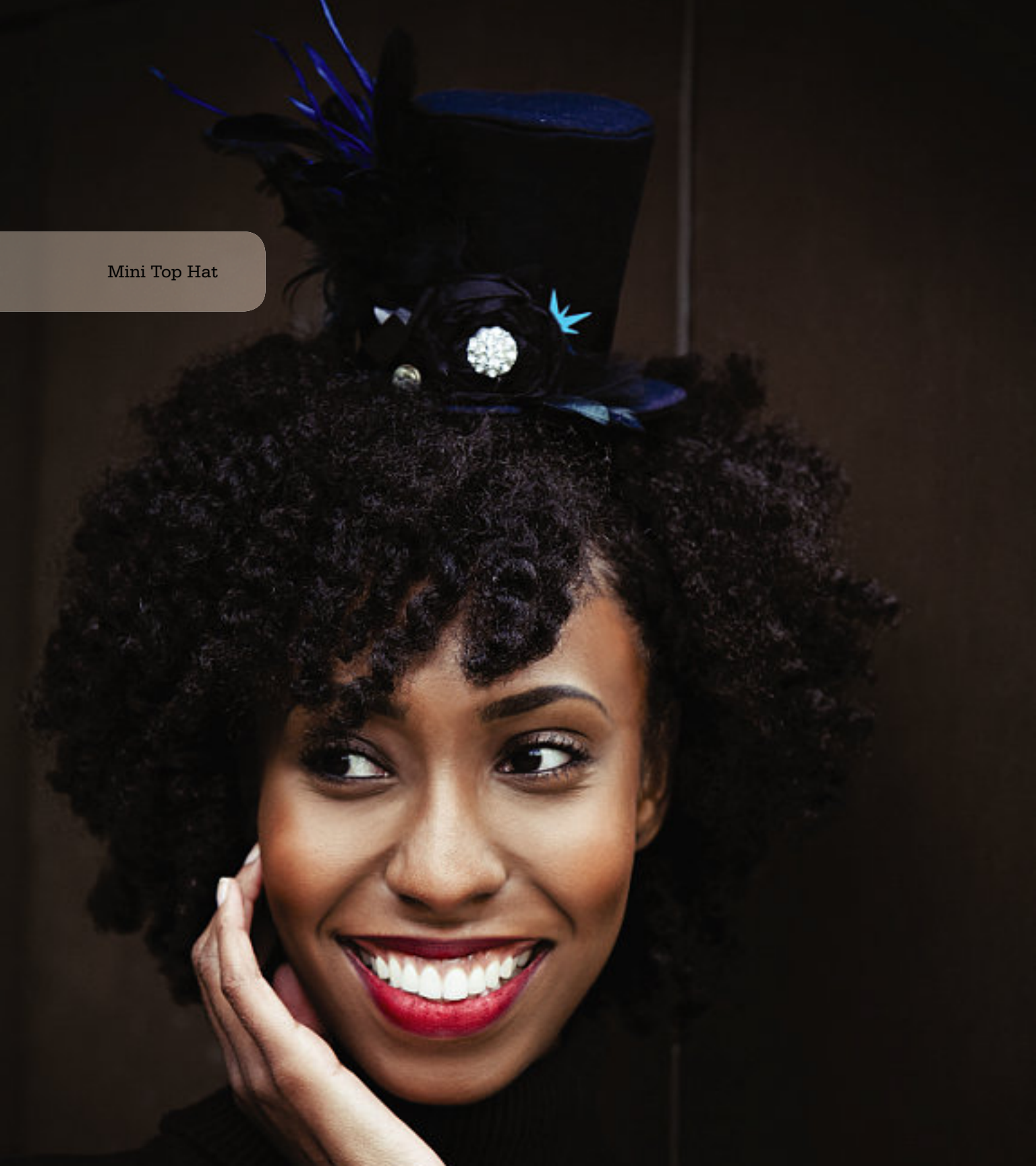


Mini Top Hat



MINI TOP HAT

By Heather Niziolek (Goosie Girl) and Carla Crim (Scientific Seamstress)

You can put on the ritz with this super-swanky mini top hat. At only 3½" tall, this petite chapeau makes a big statement. The hat is pieced from fleece-fused fabric, and it features an inner foam core that is sturdy, yet lightweight. It goes together quickly, so you can get to the fun part . . . the embellishments! For a sophisticated night on the town, add billowy feathers and glitzy rhinestones. A glammed-out theme hat is also a great way to top off a costume or add holiday spirit to any outfit. These hats are wonderful for children, as well. Little girls love them for dress-up and party time, and they make great props for a baby's first photo shoot.

Sizes: One size fits all

Skill Level: Beginner/Intermediate

Materials

- ¼ yard light- to mediumweight woven fashion fabric. The designer used quilter's cottons and sateen for this project. Other possibilities include broadcloth, linen, satins, silks, or wool.
- ¾ yard fusible fleece (see chapter 1)
- One 9" × 12" sheet of 2mm craft foam
- Hot glue gun and glue sticks
- Appropriately sized clip(s), comb, or headband. For adults with thick hair, a single large spring barrette (70–80mm) or a comb will work well. Alligator clips are better for young children (use 2 for extra hold). For babies and toddlers, elasticized headbands are a good choice.

Optional embellishments: Mix and match from the following categories:

- **Band:** A decoration that goes around the base of the hat, usually trim or ribbon. Gimp (braided ornamental trim) and ruffled fold-over elastic work well.
- **Height:** A tall element like spikes of tulle, feathers, thin leaves, or wiry pieces of garland.
- **Volume:** Something wide and voluminous like a pouf of lace or tulle, or a 3–4" piece of feather boa rolled into a ball.
- **Mass:** Something that will provide weight and a focal point. Suggestions include brooches, bows, silk flowers, fabric rosettes, or themed trinkets.
- **Extras:** Small elements like buttons, gems, or pearls. Veiling also may be added to the underside of the brim.





Assemble the Hat

1 Fuse the fleece to the wrong side of the fashion fabric pieces according to the manufacturer's instructions. Cut a "+" shape on only 1 of the brim pieces, as indicated on the pattern.

2 Fold the bottom un-notched edge of the outer side band piece over $\frac{1}{2}$ " to the wrong side. Press, then stitch into place, $\frac{1}{8}$ " from the folded edge. Fold the side band piece in half widthwise, right side facing in. Stitch $\frac{1}{4}$ " from the aligned short edges. (See Figure 2.) Press the seam allowance open.

Cut the Pattern Pieces

From the fashion fabric: Cut 1 piece from the outer side band pattern. Cut 1 piece from the top pattern. Cut 2 pieces from the brim pattern.

From the fusible fleece: Cut 1 piece from the outer side band pattern. Cut 1 piece from the top pattern. Cut 2 pieces from the brim pattern.

From the craft foam: Cut 1 piece from the form side pattern. Cut 1 piece from the form base pattern.

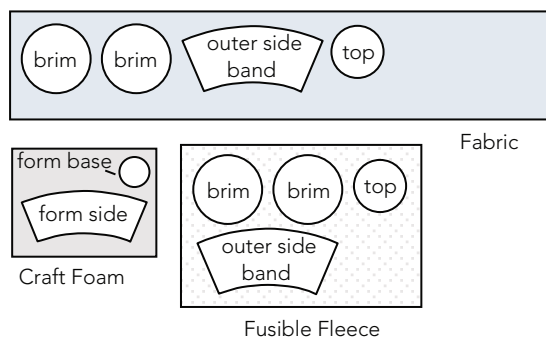


FIGURE 1: Cutting Layout

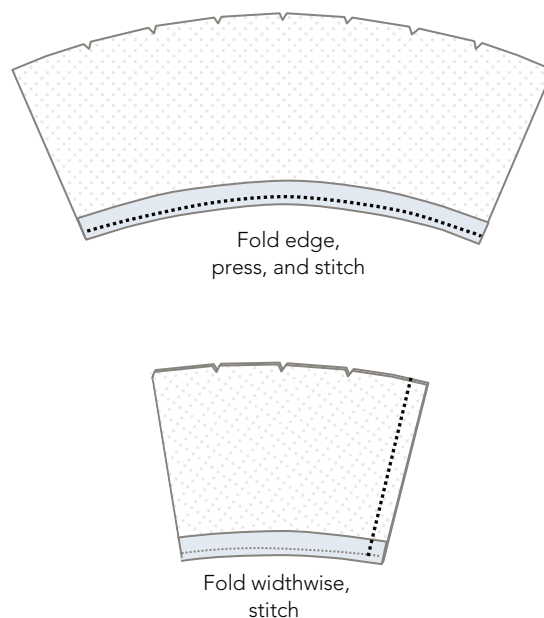


FIGURE 2

3 With the right sides facing, match the notches and seam along the top edge of the outer side band piece with the notches in the top piece. Pin together. Using tight, small stitches, sew $\frac{1}{4}$ " from the aligned edges. Trim the seam allowance down to $\frac{1}{8}$ ". Turn the side/top assembly right side out. Work the edge between your fingers to fully turn out the seam. (See Figure 3.)

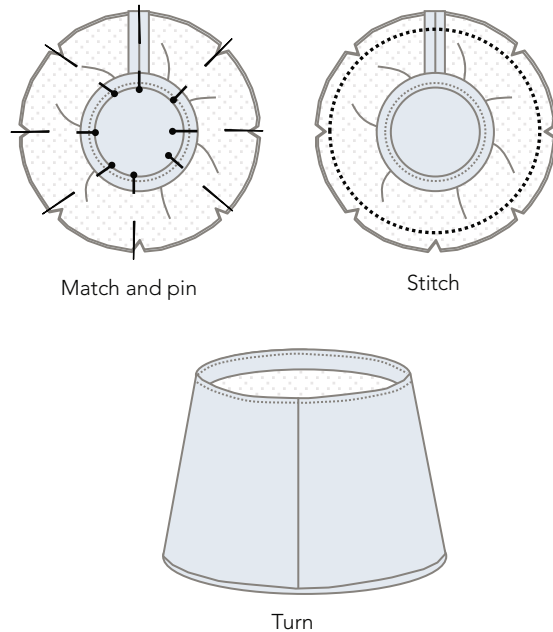


FIGURE 3

4 Place the brim pieces together, right fashion fabric sides facing, and align the edges. Using tight, small stitches, sew $\frac{1}{4}$ " from the aligned edges. Trim the seam allowance down to $\frac{1}{8}$ ". Turn the brim right side out. Work the edge between your fingers to fully turn out the seam. Press the tabs back against the fashion fabric at the center "+". Apply hot glue to the exposed fleece in the center, and carefully push the tabs back into place. (See Figure 4.)

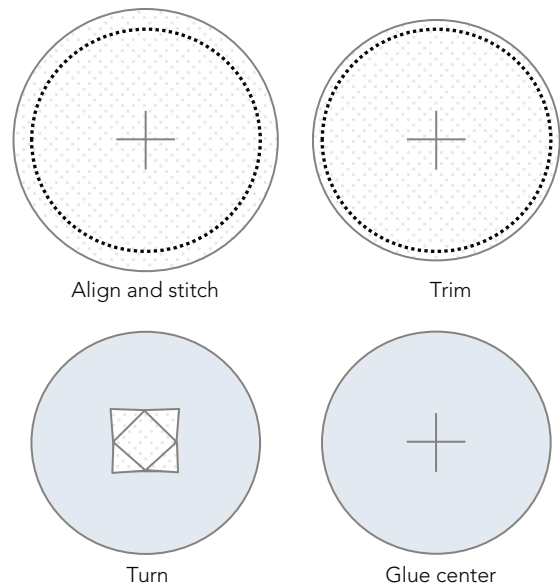


FIGURE 4

5 Apply a thin line of hot glue to one short edge of the form side foam. Bring the other short end over and overlap by $\frac{1}{4}$ ". Fold the form at the wide end and insert it into the hat top assembly. Arrange it so the overlap is in line with the seam allowance, and the narrow end is about $\frac{1}{4}$ " below the folded edge of the hat top. When viewed from above, it should be as round as possible. Place the form base atop the form side to make sure it fits inside the hat top. Trim slightly, if needed. Once you have a good fit, apply a thin line of hot glue to the narrow end of the form. **NOTE:** Try to avoid getting glue on the outside of the hat top, but don't worry if a bit of glue drips inside the form. Carefully stick the form base into place on top of the form side. Arrange it so the edges of the hat top just cover the form base. (See Figure 5.)

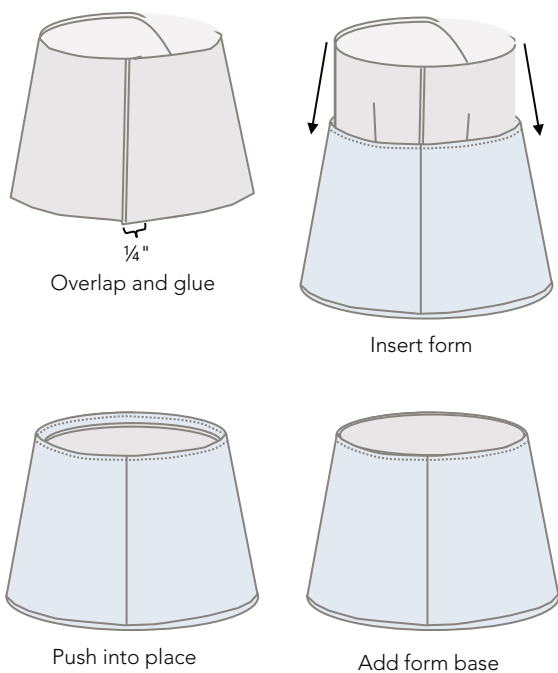


FIGURE 5

6 Apply a 1" diameter circle of glue over the "+" on the brim. Stick the hat base into place at this position, making sure it is perfectly centered. (See Figure 6.) Let cool. Working in small sections, apply glue to the outer perimeter of the hat base, and stick to the brim. Try to avoid getting glue blobs on the brim beyond the position of the base.

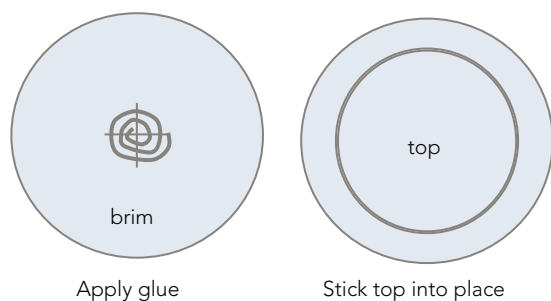


FIGURE 6

Embellishment

NOTE: When embellishing, think of the embellishments as "layers" with the taller embellishments being at the back so they will not cover the shorter ones. I like to think of the embellishments as making the visual presence of the hat larger. A plain mini top hat would be just that, plain. Think of your embellishments as a way to expand the hat—and not just "decorate" it. Embellishments, when done properly, will seem to be a part of the hat itself.

7 Wrap the ribbon around the base of the top hat and hot glue or sew into place. If you are adding other embellishments that will cover the ribbon ends, place them at the appropriate place. Otherwise, position the ends at the seam, and neatly fold the ribbon end to cover the start point. Attach the "height" embellishments to the side of the hat. Secure the "volume" embellishment to the base in front of the height elements. Position the "mass" as desired over the volume embellishments. Hot glue or sew the "extras" into place around the arrangement you have created. (See Figure 7.)

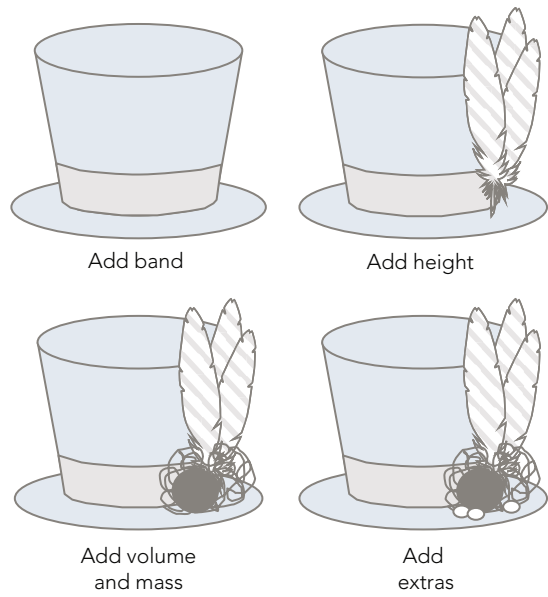


FIGURE 7

8 Glue or sew the clip(s), comb, or headband to the underside of the hat.

Mini Top Hat

Important note:

The pattern pieces are designed to be printed at 100%. Before printing the patterns, make sure that page scaling is set to none in Adobe Acrobat print window. To be sure that your patterns are going to print at the correct size, measure the box on the first pattern page. It should measure exactly 1 inch by 1 inch.

