

Kirchhoff's Current Law

Kirchhoff's Current Law (KCL) is Kirchhoff's first law that deals with the conservation of charge entering and leaving a junction.

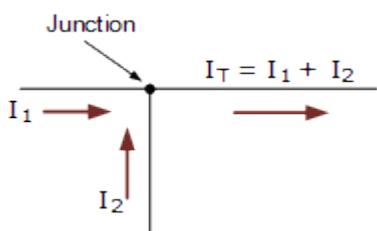
To determine the amount or magnitude of the electrical current flowing around an electrical or electronic circuit, we need to use certain laws or rules that allows us to write down these currents in the form of an equation. The network equations used are those according to Kirchhoff's laws, and as we are dealing with circuit currents, we will be looking at Kirchhoff's current law, (KCL).

Gustav Kirchhoff's Current Law is one of the fundamental laws used for circuit analysis. His current law states that for a parallel path **the total current entering a circuits junction is exactly equal to the total current leaving the same junction**. This is because it has no other place to go as no charge is lost.

In other words the algebraic sum of ALL the currents entering and leaving a junction must be equal to zero as: $\sum I_{IN} = \sum I_{OUT}$.

This idea by Kirchhoff is commonly known as the **Conservation of Charge**, as the current is conserved around the junction with no loss of current. Lets look at a simple example of Kirchhoff's current law (KCL) when applied to a single junction.

A Single Junction



Here in this simple single junction example, the current I_T leaving the junction is the algebraic sum of the two currents, I_1 and I_2 entering the same junction. That is $I_T = I_1 + I_2$.

Note that we could also write this correctly as the algebraic sum of: $I_T - (I_1 + I_2) = 0$.

So if I_1 equals 3 amperes and I_2 is equal to 2 amperes, then the total current, I_T leaving the junction will be $3 + 2 = 5$ amperes, and we can use this basic law for any number of junctions or nodes as the sum of the currents both entering and leaving will be the same.

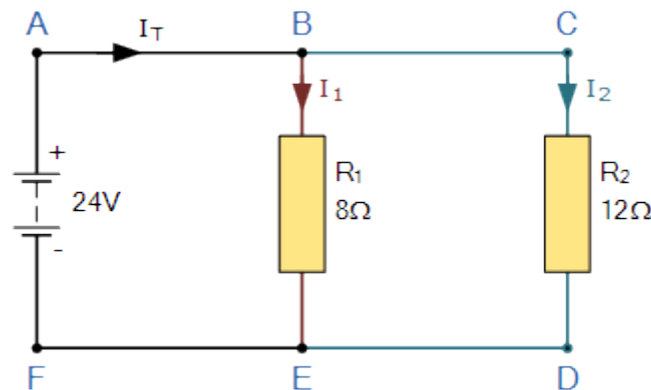
Also, if we reversed the directions of the currents, the resulting equations would still hold true for I_1 or I_2 . As $I_1 = I_T - I_2 = 5 - 2 = 3$ amps, and $I_2 = I_T - I_1 = 5 - 3 = 2$ amps. Thus we can

think of the currents entering the junction as being positive (+), while the ones leaving the junction as being negative (-).

Then we can see that the mathematical sum of the currents either entering or leaving the junction and in whatever direction will always be equal to zero, and this forms the basis of Kirchhoff's Junction Rule, more commonly known as *Kirchhoff's Current Law*, or (KCL).

Resistors in Parallel

Let's look how we could apply Kirchhoff's current law to resistors in parallel, whether the resistances in those branches are equal or unequal. Consider the following circuit diagram:



In this simple parallel resistor example there are two distinct junctions for current. Junction one occurs at node B, and junction two occurs at node E. Thus we can use Kirchhoff's Junction Rule for the electrical currents at both of these two distinct junctions, for those currents entering the junction and for those currents flowing leaving the junction.

To start, all the current, I_T leaves the 24 volt supply and arrives at point A and from there it enters node B. Node B is a junction as the current can now split into two distinct directions, with some of the current flowing downwards and through resistor R_1 with the remainder continuing on through resistor R_2 via node C. Note that the currents flowing into and out of a node point are commonly called branch currents.

We can use Ohm's Law to determine the individual branch currents through each resistor as: $I = V/R$, thus:

For current branch B to E through resistor R_1

$$I_{B-E} = I_1 = \frac{V}{R_1} = \frac{24}{8} = 3A$$

For current branch C to D through resistor R_2

$$I_{C-D} = I_2 = \frac{V}{R_2} = \frac{24}{12} = 2A$$

From above we know that Kirchhoff's current law states that the sum of the currents entering a junction must equal the sum of the currents leaving the junction, and in our simple example

above, there is one current, I_T going into the junction at node B and two currents leaving the junction, I_1 and I_2 .

Since we now know from calculation that the currents leaving the junction at node B is $I_1 = 3$ amps and I_2 equals 2 amps, the sum of the currents entering the junction at node B must equal $3 + 2 = 5$ amps. Thus $\Sigma_{IN} = I_T = 5$ amperes.

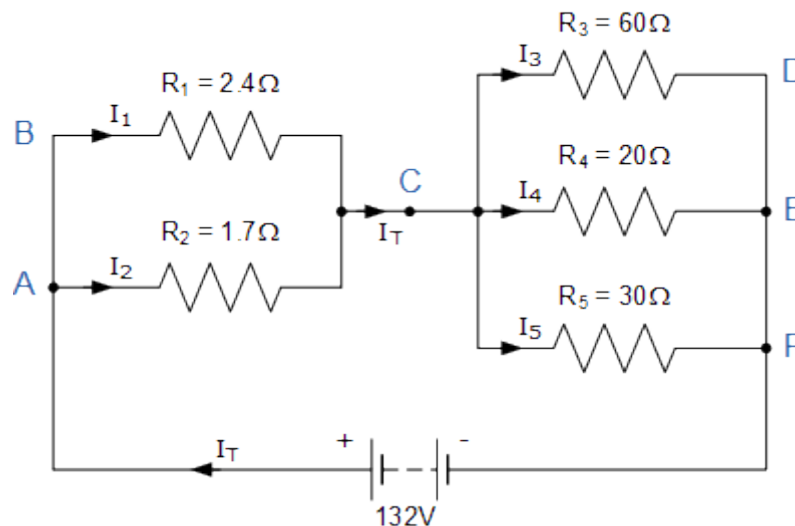
In our example, we have two distinct junctions at node B and node E, thus we can confirm this value for I_T as the two currents recombine again at node E. So, for Kirchhoff's junction rule to hold true, the sum of the currents into point F must equal the sum of the currents flowing out of the junction at node E.

As the two currents entering junction E are 3 amps and 2 amps respectively, the sum of the currents entering point F is therefore: $3 + 2 = 5$ amperes. Thus $\Sigma_{IN} = I_T = 5$ amperes and therefore Kirchhoff's current law holds true as this is the same value as the current leaving point A.

Applying KCL to more complex circuits.

We can use Kirchhoff's current law to find the currents flowing around more complex circuits. We hopefully know by now that the algebraic sum of all the currents at a node (junction point) is equal to zero and with this idea in mind, it is a simple case of determining the currents entering a node and those leaving the node. Consider the circuit below.

Kirchhoff's Current Law Example No1



In this example there are four distinct junctions for current to either separate or merge together at nodes A, C, E and node F. The supply current I_T separates at node A flowing through resistors R_1 and R_2 , recombining at node C before separating again through resistors R_3 , R_4 and R_5 and finally recombining once again at node F.

But before we can calculate the individual currents flowing through each resistor branch, we must first calculate the circuits total current, I_T . Ohms law tells us that $I = V/R$ and as we know the value of V , 132 volts, we need to calculate the circuit resistances as follows.

Circuit Resistance R_{AC}

$$\frac{1}{R_{(AC)}} = \frac{1}{R_1} + \frac{1}{R_2} = \frac{1}{2.4} + \frac{1}{1.7}$$

$$\frac{1}{R_{(AC)}} = \frac{1}{1} \quad \therefore R_{(AC)} = 1\Omega$$

Thus the equivalent circuit resistance between nodes A and C is calculated as 1 Ohm.

Circuit Resistance R_{CF}

$$\frac{1}{R_{(CF)}} = \frac{1}{R_3} + \frac{1}{R_4} + \frac{1}{R_5} = \frac{1}{60} + \frac{1}{20} + \frac{1}{30}$$

$$\frac{1}{R_{(CF)}} = \frac{1}{0.1} \quad \therefore R_{(CF)} = 10\Omega$$

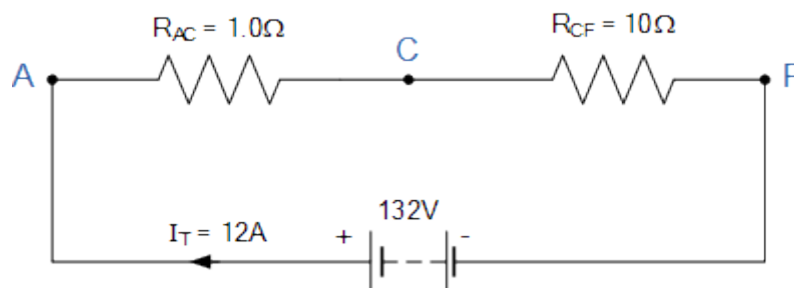
Thus the equivalent circuit resistance between nodes C and F is calculated as 10 Ohms. Then the total circuit current, I_T is given as:

$$R_T = R_{(AC)} + R_{(CF)} = 1 + 10 = 11\Omega$$

$$I_T = \frac{V}{R_T} = \frac{132}{11} = 12 \text{ Amps}$$

Giving us an equivalent circuit of:

Kirchhoff's Current Law Equivalent Circuit



Therefore, $V = 132V$, $R_{AC} = 1\Omega$, $R_{CF} = 10\Omega$'s and $I_T = 12A$.

Having established the equivalent parallel resistances and supply current, we can now calculate the individual branch currents and confirm using Kirchoff's junction rule as follows.

$$V_{AC} = I_T \times R_{AC} = 12 \times 1 = 12 \text{ Volts}$$

$$V_{CF} = I_T \times R_{CF} = 12 \times 10 = 120 \text{ Volts}$$

$$I_1 = \frac{V_{AC}}{R_1} = \frac{12}{2.4} = 5 \text{ Amps}$$

$$I_2 = \frac{V_{AC}}{R_2} = \frac{12}{1.7} = 7 \text{ Amps}$$

$$I_3 = \frac{V_{CF}}{R_3} = \frac{120}{60} = 2 \text{ Amps}$$

$$I_4 = \frac{V_{CF}}{R_4} = \frac{120}{20} = 6 \text{ Amps}$$

$$I_5 = \frac{V_{CF}}{R_5} = \frac{120}{30} = 4 \text{ Amps}$$

Thus, $I_1 = 5\text{A}$, $I_2 = 7\text{A}$, $I_3 = 2\text{A}$, $I_4 = 6\text{A}$, and $I_5 = 4\text{A}$.

We can confirm that Kirchoff's current law holds true around the circuit by using node C as our reference point to calculate the currents entering and leaving the junction as:

$$\text{At node C } \sum I_{IN} = \sum I_{OUT}$$

$$I_T = I_1 + I_2 = I_3 + I_4 + I_5$$

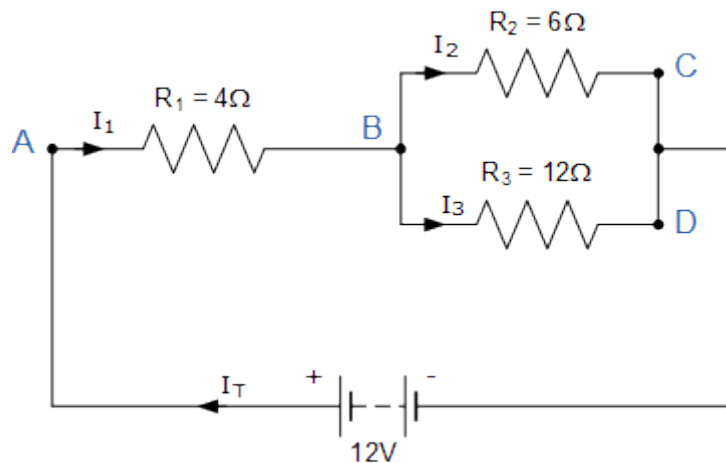
$$\therefore 12 = (5 + 7) = (2 + 6 + 4)$$

We can also double check to see if Kirchhoff's Current Law holds true as the currents entering the junction are positive, while the ones leaving the junction are negative, thus the algebraic sum is: $I_1 + I_2 - I_3 - I_4 - I_5 = 0$ which equals $5 + 7 - 2 - 6 - 4 = 0$.

So we can confirm by analysis that Kirchhoff's current law (KCL) which states that the algebraic sum of the currents at a junction point in a circuit network is always zero is true and correct in this example.

Kirchhoff's Current Law Example No2

Find the currents flowing around the following circuit using Kirchhoff's Current Law only.



I_T is the total current flowing around the circuit driven by the 12V supply voltage. At point A, I_1 is equal to I_T , thus there will be an $I_1 \cdot R$ voltage drop across resistor R_1 .

The circuit has 2 branches, 3 nodes (B, C and D) and 2 independent loops, thus the $I \cdot R$ voltage drops around the two loops will be:

- Loop ABC $\Rightarrow 12 = 4I_1 + 6I_2$
- Loop ABD $\Rightarrow 12 = 4I_1 + 12I_3$

Since Kirchhoff's current law states that at node B, $I_1 = I_2 + I_3$, we can therefore substitute current I_1 for $(I_2 + I_3)$ in both of the following loop equations and then simplify.

Kirchhoff's Loop Equations

Loop (ABC)

$$12 = 4I_1 + 6I_2$$

$$12 = 4(I_2 + I_3) + 6I_2$$

$$12 = 4I_2 + 4I_3 + 6I_2$$

$$12 = 10I_2 + 4I_3$$

Loop (ABD)

$$12 = 4I_1 + 12I_3$$

$$12 = 4(I_2 + I_3) + 12I_3$$

$$12 = 4I_2 + 4I_3 + 12I_3$$

$$12 = 4I_2 + 16I_3$$

We now have two simultaneous equations that relate to the currents flowing around the circuit.

$$\text{Eq. No 1 : } 12 = 10I_2 + 4I_3$$

$$\text{Eq. No 2 : } 12 = 4I_2 + 16I_3$$

By multiplying the first equation (Loop ABC) by 4 and subtracting Loop ABD from Loop ABC, we can be reduced both equations to give us the values of I_2 and I_3

$$\text{Eq. No 1 : } 12 = 10I_2 + 4I_3 \text{ (x4)} \Rightarrow 48 = 40I_2 + 16I_3$$

$$\text{Eq. No 2 : } 12 = 4I_2 + 16I_3 \text{ (x1)} \Rightarrow 12 = 4I_2 + 16I_3$$

$$\text{Eq. No 1} - \text{Eq. No 2} \Rightarrow 36 = 36I_2 + 0$$

Substitution of I_2 in terms of I_3 gives us the value of I_2 as 1.0 Amps

Substitution of I_3 in terms of I_2 gives us the value of I_3 as 0.5 Amps

As Kirchhoff's junction rule states that : $I_1 = I_2 + I_3$

The supply current flowing through resistor R_1 is given as : $1.0 + 0.5 = 1.5$ Amps

Thus $I_1 = I_T = 1.5$ Amps, $I_2 = 1.0$ Amps and $I_3 = 0.5$ Amps.

We could have solved the circuit of example two simply and easily just using Ohm's Law, but we have used Kirchhoff's Current Law here to show how it is possible to solve more complex circuits when we can not just simply apply Ohm's Law.