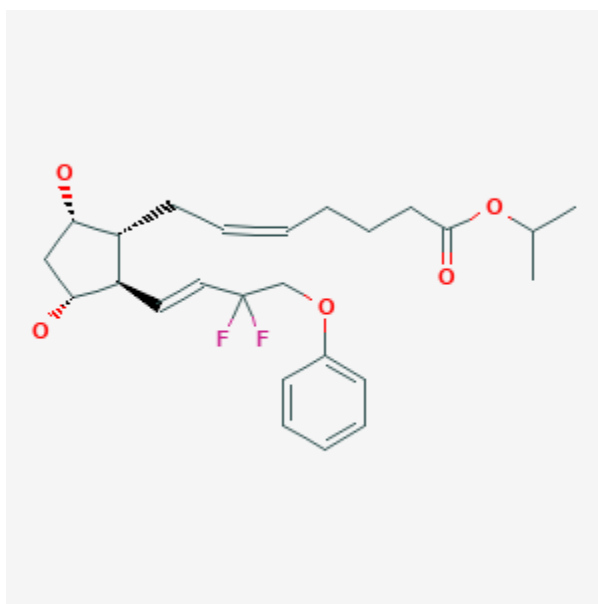




Tafluprost

Revised: December 3, 2018.

CASRN: 209860-87-7



Drug Levels and Effects

Summary of Use during Lactation

No information is available on the use of tafluprost during breastfeeding. Because of the extremely low levels in plasma after application to the eye, it is not likely to reach the breastmilk or bloodstream of the infant or to cause any adverse effects in breastfed infants. To further diminish the amount of drug that reaches the breastmilk after using eye drops, place pressure over the tear duct by the corner of the eye for 1 minute or more, then remove the excess solution with an absorbent tissue.

Drug Levels

Maternal Levels. Relevant published information was not found as of the revision date.

Infant Levels. Relevant published information was not found as of the revision date.

Disclaimer: Information presented in this database is not meant as a substitute for professional judgment. You should consult your healthcare provider for breastfeeding advice related to your particular situation. The U.S. government does not warrant or assume any liability or responsibility for the accuracy or completeness of the information on this Site .

Effects in Breastfed Infants

Relevant published information was not found as of the revision date.

Effects on Lactation and Breastmilk

Relevant published information was not found as of the revision date.

Substance Identification

Substance Name

Tafluprost

CAS Registry Number

209860-87-7

Drug Class

Breast Feeding

Lactation

Antiglaucoma Agents

Prostaglandins