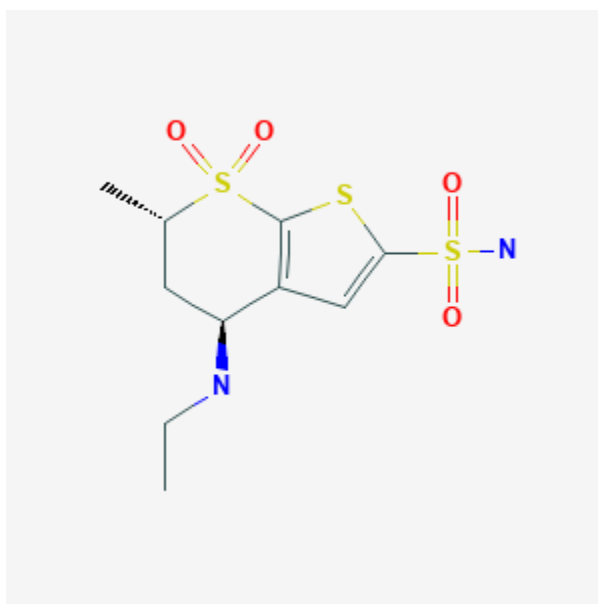




## Dorzolamide

Revised: October 31, 2018.

CASRN: 120279-96-1



## Drug Levels and Effects

### Summary of Use during Lactation

Limited experience with the use of ophthalmic dorzolamide indicate that it is unlikely to adversely affect the breastfed infant. To substantially diminish the amount of drug that reaches the breastmilk after using eye drops, place pressure over the tear duct by the corner of the eye for 1 minute or more, then remove the excess solution with an absorbent tissue.

### Drug Levels

*Maternal Levels.* Relevant published information was not found as of the revision date.

*Infant Levels.* Relevant published information was not found as of the revision date.

## Effects in Breastfed Infants

A newborn infant was breastfed during maternal therapy with ocular timolol, dipivifrin, dorzolamide, brimonidine and several doses of acetazolamide. The drugs were given immediately following breastfeeding and no apnea or bradycardia was observed in the infant.[1]

## Effects on Lactation and Breastmilk

Relevant published information was not found as of the revision date.

## References

1. Johnson SM, Martinez M, Freedman S. Management of glaucoma in pregnancy and lactation. *Surv Ophthalmol.* 2001;45:449-54. PubMed PMID: 11274697.

## Substance Identification

### Substance Name

Dorzolamide

### CAS Registry Number

120279-96-1

### Drug Class

Breast Feeding

Lactation

Antiglaucoma Agents

Carbonic Anhydrase Inhibitors