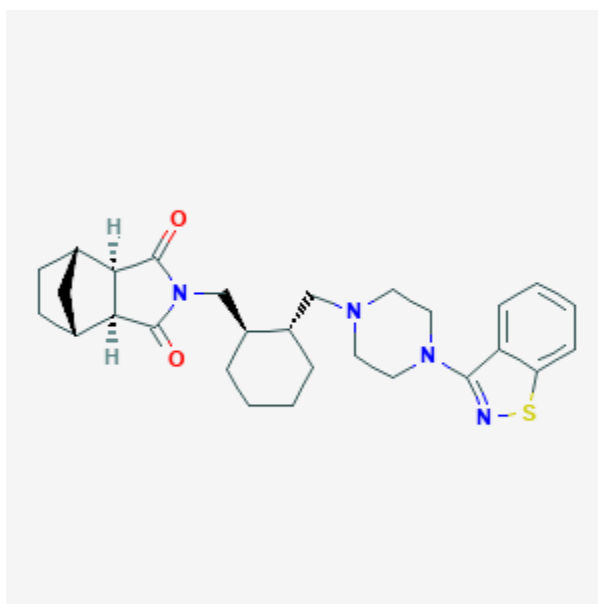




Lurasidone

Revised: December 3, 2018.

CASRN: 367514-87-2



Drug Levels and Effects

Summary of Use during Lactation

Lurasidone is more than 99% bound to plasma proteins, so it is unlikely that the drug would be excreted into milk in sufficient amounts to affect a breastfed infant. But since there is no published experience with lurasidone during breastfeeding, an alternate drug may be preferred, especially while nursing a newborn or preterm infant. [1]

Drug Levels

Maternal Levels. Relevant published information was not found as of the revision date.

Infant Levels. Relevant published information was not found as of the revision date.

Effects in Breastfed Infants

Relevant published information was not found as of the revision date.

Effects on Lactation and Breastmilk

Lurasidone has caused elevated prolactin serum in patients taking the drug.[2] The prolactin level in a mother with established lactation may not affect her ability to breastfeed.

Alternate Drugs to Consider

Haloperidol, Olanzapine, Risperidone

References

1. McAllister-Williams RH, Baldwin DS, Cantwell R et al. British Association for Psychopharmacology consensus guidance on the use of psychotropic medication preconception, in pregnancy and postpartum 2017. *J Psychopharmacol.* 2017;31:519-52. PubMed PMID: 28440103.
2. Anon. Latuda package insert. Sunovion Pharmaceuticals Inc. Ft. Lee, NJ. 2010.

Substance Identification

Substance Name

Lurasidone

CAS Registry Number

367514-87-2

Drug Class

Breast Feeding

Lactation

Antipsychotic Agents