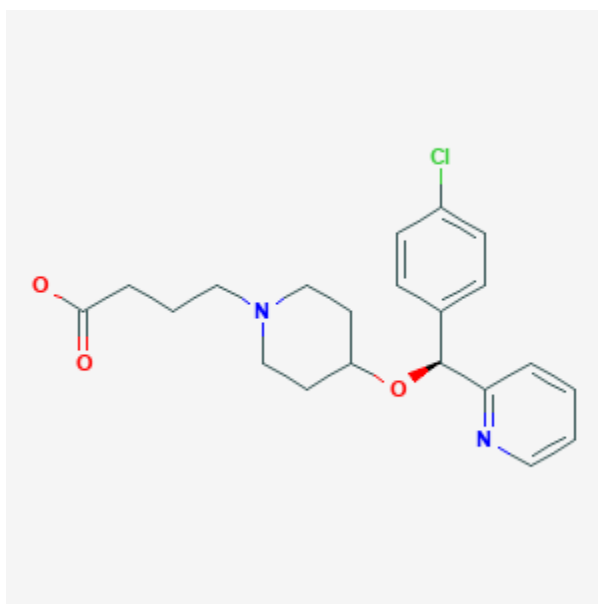




Bepotastine

Revised: December 3, 2018.

CASRN: 125602-71-3



Drug Levels and Effects

Summary of Use during Lactation

There are no reports of infants breastfed during maternal therapy with bepotastine. Because absorption from the eye is limited, bepotastine would not be expected to cause any adverse effects in breastfed infants. To substantially diminish the amount of drug that reaches the breastmilk after using eye drops, place pressure over the tear duct by the corner of the eye for 1 minute or more, then remove the excess solution with an absorbent tissue.

Drug Levels

Maternal Levels. Relevant published information was not found as of the revision date.

Infant Levels. Relevant published information was not found as of the revision date.

Disclaimer: Information presented in this database is not meant as a substitute for professional judgment. You should consult your healthcare provider for breastfeeding advice related to your particular situation. The U.S. government does not warrant or assume any liability or responsibility for the accuracy or completeness of the information on this Site .

Effects in Breastfed Infants

Relevant published information on bepotastine was not found as of the revision date. In one telephone follow-up study, mothers reported irritability and colicky symptoms in 10% of infants exposed to various antihistamines and drowsiness was reported in 1.6% of infants. None of the reactions required medical attention.[1]

Effects on Lactation and Breastmilk

Antihistamines in relatively high doses given by injection can decrease basal serum prolactin in nonlactating women and in early postpartum women.[2][3] However, suckling-induced prolactin secretion is not affected by antihistamine pretreatment of postpartum mothers.[2] The prolactin level in a mother with established lactation may not affect her ability to breastfeed. Low ophthalmic doses of bepotastine are unlikely to have the same effect on serum prolactin.

Alternate Drugs to Consider

Desloratadine, Fexofenadine, Loratadine

References

1. Ito S, Blajchman A, Stephenson M et al. Prospective follow-up of adverse reactions in breast-fed infants exposed to maternal medication. *Am J Obstet Gynecol.* 1993;168:1393-9. PubMed PMID: 8498418.
2. Messinis IE, Souvatzoglou A, Fais N, Lolis D. Histamine H1 receptor participation in the control of prolactin secretion in postpartum. *J Endocrinol Investig.* 1985;8:143-6. PubMed PMID: 3928731.
3. Pontiroli AE, De Castro e Silva E, Mazzoleni F, Alberetto M et al. The effect of histamine and H1 and H2 receptors on prolactin and luteinizing hormone release in humans: sex differences and the role of stress. *J Clin Endocrinol Metab.* 1981;52:924-8. PubMed PMID: 7228996.

Substance Identification

Substance Name

Bepotastine

CAS Registry Number

125602-71-3

Drug Class

Breast Feeding

Lactation

Anti-Allergic Agents

Antihistamines