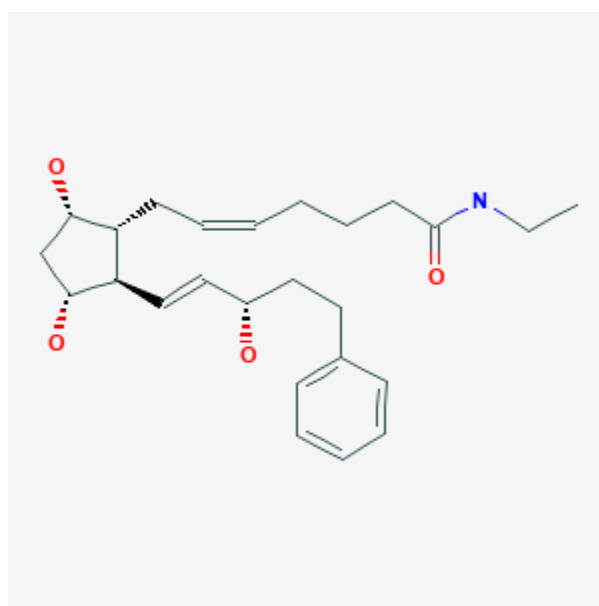




## Bimatoprost

Revised: December 3, 2018.

CASRN: 155206-00-1



## Drug Levels and Effects

### Summary of Use during Lactation

No information is available on the use of bimatoprost during breastfeeding. Because of its short half-life it is not likely to reach the bloodstream of the infant or cause any adverse effects in breastfed infants. To substantially diminish the amount of drug that reaches the breastmilk after using eye drops, place pressure over the tear duct by the corner of the eye for 1 minute or more, then remove the excess solution with an absorbent tissue.

### Drug Levels

*Maternal Levels.* Relevant published information was not found as of the revision date.

*Infant Levels.* Relevant published information was not found as of the revision date.

## Effects in Breastfed Infants

Relevant published information was not found as of the revision date.

## Effects on Lactation and Breastmilk

Relevant published information was not found as of the revision date.

## Substance Identification

### Substance Name

Bimatoprost

### CAS Registry Number

155206-00-1

### Drug Class

Breast Feeding

Lactation

Antiglaucoma Agents

Prostaglandins