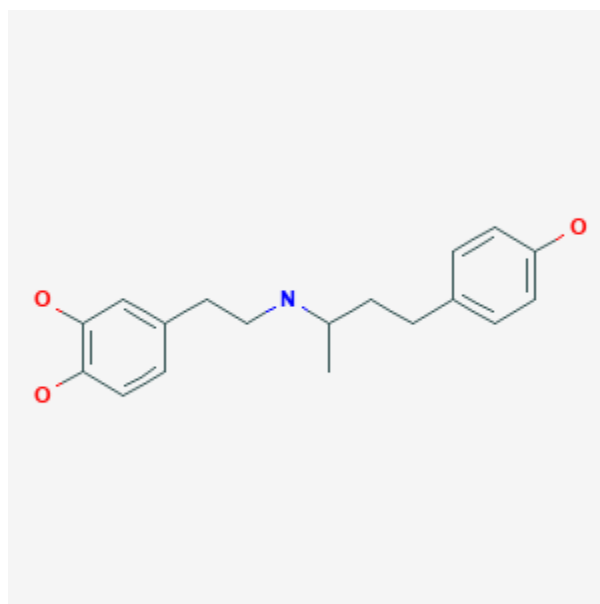




## Dobutamine

Revised: December 3, 2018.

CASRN: 34368-04-2



## Drug Levels and Effects

### Summary of Use during Lactation

No information is available on the use of dobutamine during breastfeeding. Because of its poor oral bioavailability and short half-life, any dobutamine in milk is unlikely to affect the infant.

### Drug Levels

*Maternal Levels.* Relevant published information was not found as of the revision date.

*Infant Levels.* Relevant published information was not found as of the revision date.

### Effects in Breastfed Infants

Relevant published information was not found as of the revision date.

**Disclaimer:** Information presented in this database is not meant as a substitute for professional judgment. You should consult your healthcare provider for breastfeeding advice related to your particular situation. The U.S. government does not warrant or assume any liability or responsibility for the accuracy or completeness of the information on this Site .

## Effects on Lactation and Breastmilk

Relevant published information in nursing mothers was not found as of the revision date. Unlike dopamine, dobutamine infusion does not affect serum prolactin concentration in infants[1] and in adult males.[2] The prolactin level in a mother with established lactation may not affect her ability to breastfeed.

## References

1. Filippi L, Pezzati M, Poggi C et al. Dopamine versus dobutamine in very low birthweight infants: endocrine effects. *Arch Dis Child Fetal Neonatal Ed.* 2007;92:F367-71. PubMed PMID: 17329276.
2. Schilling T, Grundling M, Strang CM. Effects of dopexamine, dobutamine or dopamine on prolactin and thyreotropin serum concentrations in high-risk surgical patients. *Intensive Care Med.* 2004;30:1127-33. PubMed PMID: 15138671.

## Substance Identification

### Substance Name

Dobutamine

### CAS Registry Number

34368-04-2

### Drug Class

Breast Feeding

Lactation

Adrenergic beta-Agonists

Cardiotonic Agents

Catecholamines

Sympathomimetics