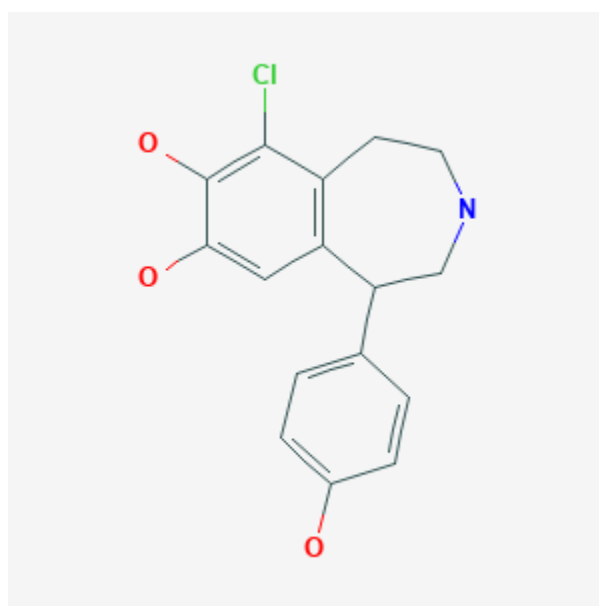




## Fenoldopam

Revised: December 3, 2018.

CASRN: 67227-56-9



## Drug Levels and Effects

### Summary of Use during Lactation

No information is available on the use of fenoldopam during breastfeeding. Because of its poor oral bioavailability and short half-life, any fenoldopam in milk is unlikely to adversely affect the breastfed infant. Also, fenoldopam can be given intravenously to infants. Unlike dopamine, it does not decrease serum prolactin concentrations and might not interfere with nursing.

### Drug Levels

*Maternal Levels.* Relevant published information was not found as of the revision date.

*Infant Levels.* Relevant published information was not found as of the revision date.

## Effects in Breastfed Infants

Relevant published information was not found as of the revision date.

## Effects on Lactation and Breastmilk

Relevant published information in nursing mothers was not found as of the revision date. Unlike dopamine, fenoldopam infusion does not affect serum prolactin concentration in normal women.[1] The prolactin level in a mother with established lactation may not affect her ability to breastfeed.

## Alternate Drugs to Consider

(Hypertension) [Enalapril](#), [Hydralazine](#), [Labetalol](#), [Methyldopa](#), [Propranolol](#)

## References

1. Boesgaard S, Hagen C, Hangaard J et al. Pulsatile gonadotropin secretion and basal prolactin levels during dopamine D-1 receptor stimulation in normal women. *Fertil Steril.* 1991;55:281-6. PubMed PMID: 1671361.

## Substance Identification

### Substance Name

Fenoldopam

### CAS Registry Number

67227-56-9

### Drug Class

Breast Feeding

Lactation

Antihypertensive Agents

Dopamine Agents

Dopamine Agonists

Vasodilator Agents