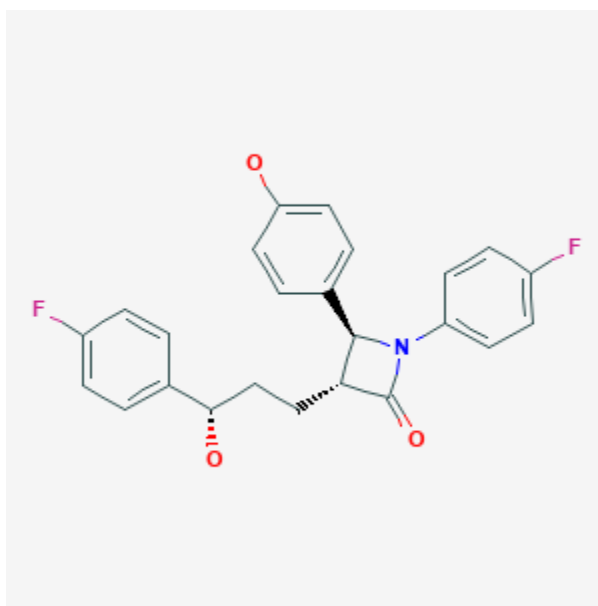




Ezetimibe

Revised: December 3, 2018.

CASRN: 163222-33-1



Drug Levels and Effects

Summary of Use during Lactation

No relevant published information exists on the use of ezetimibe during breastfeeding. Because of a concern with disruption of infant lipid metabolism, ezetimibe is best avoided during breastfeeding. An alternate drug is preferred, especially while nursing a newborn or preterm infant. Ezetimibe treatment in combination with a statin (e.g., atorvastatin, simvastatin) should be avoided in nursing mothers.

Drug Levels

Maternal Levels. Relevant published information was not found as of the revision date.

Infant Levels. Relevant published information was not found as of the revision date.

Effects in Breastfed Infants

Relevant published information was not found as of the revision date.

Effects on Lactation and Breastmilk

Relevant published information was not found as of the revision date.

Alternate Drugs to Consider

Cholestyramine, Colesevelam, Colestipol

Substance Identification

Substance Name

Ezetimibe

CAS Registry Number

163222-33-1

Drug Class

Breast Feeding

Lactation

Anticholesteremic Agents

Antilipemic Agents