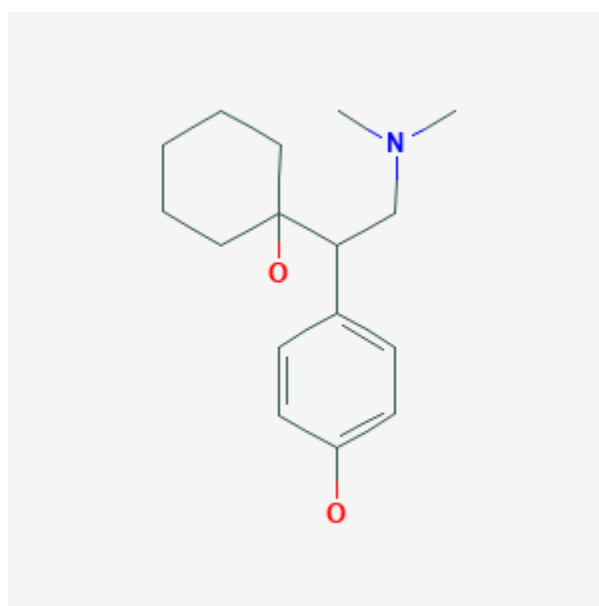




Desvenlafaxine

Revised: October 31, 2018.

CASRN: 93413-62-8



Drug Levels and Effects

Summary of Use during Lactation

Modest doses of desvenlafaxine are excreted into breastmilk, but serum drug levels of breastfed infants are less than 10% of simultaneous maternal levels. Total drug exposure of breastfed infants is about half of that experienced by breastfed infants whose mothers are taking venlafaxine.[1] Breastfed infants, especially newborn or preterm infants, should be monitored for excessive sedation and adequate weight gain if this drug is used during lactation, possibly including measurement of serum levels to rule out toxicity if there is a concern. With the related drug venlafaxine, newborn infants of mothers who took the drug during pregnancy sometimes experienced poor neonatal adaptation as seen with other antidepressants such as SSRIs or SNRIs. Similar effects may occur with desvenlafaxine.

Drug Levels

Desvenlafaxine (O-desmethylvenlafaxine) is an active metabolite of venlafaxine with similar antidepressant activity.[2]

Maternal Levels. Ten lactating women had been taking desvenlafaxine from 4 to 35 days in doses of 50 to 150 mg daily or an average of 1.2 mg/kg daily (95% CI: 0.93 to 1.5 mg/kg daily). Each woman provided several milk samples over a 24-hour period. Peak milk concentrations occurred at an average of 3.3 hours after the dose. An exclusively breastfed infant in this study would have received an estimated 85 mcg/kg daily or 6.8% (95% CI: 5.5 to 8.1%) of the maternal weight-adjusted dosage.[1]

A nursing mother was taking oral desvenlafaxine 250 mg and amisulpride 100 mg twice daily. Eight breastmilk samples were obtained over a 24-hour period with a breast pump. The average breastmilk concentration was 1.9 mg/L which equated to an infant dose of 0.29 mg/kg daily or 7.8% of the maternal weight-adjusted dosage.[3]

Infant Levels. Ten infants were breastfed (8 exclusively) during maternal use of desvenlafaxine in doses of 50 to 150 mg daily or an average of 1.2 mg/kg daily. The infants had an average serum desvenlafaxine level of 16 mcg/L which averaged 4.8% of the simultaneous maternal serum concentration taken at about 6.5 hours after the maternal dose. Considering only the exclusively breastfed infants, infant exposure would have averaged 5.8% of the maternal serum concentration.[1]

A nursing mother was taking oral desvenlafaxine 250 mg and amisulpride 100 mg twice daily for 12.6 weeks. Her partially breastfed infant was 5 months old. The infant's serum desvenlafaxine concentration 3.1 hours after the mother's daily dose was 13 mcg/L or 1.7% of the maternal serum concentration.[3]

Effects in Breastfed Infants

Ten infants ranging in age from 0.9 to 12.7 months were breastfed (8 exclusively) during maternal use of desvenlafaxine in doses of 50 to 150 mg daily or an average of 1.2 mg/kg daily. Mothers were also taking lorazepam (n = 6), quetiapine (n = 5), lamotrigine (n = 2), levonorgestrel (n = 2), domperidone (n = 1), and temazepam (n = 1). Infants were studied after an average of 9 days of exposure (range 4 to 35 days) of desvenlafaxine exposure via breastmilk. At the time of the study, 7 of the 10 infants were at a lower growth percentile than at the time of birth. Examination by a pediatrician found that all infants were healthy and had Denver developmental scores that matched their age on the day of the study.[1]

Effects on Lactation and Breastmilk

In an outpatient study that followed 1395 patients who received long-term desvenlafaxinene therapy, 2 patients developed elevated serum prolactin levels and one developed galactorrhea.[4] The clinical relevance of these findings in nursing mothers is not known. The prolactin level in a mother with established lactation may not affect her ability to breastfeed.

An observational study looked at outcomes of 2859 women who took an antidepressant during the 2 years prior to pregnancy. Compared to women who did not take an antidepressant during pregnancy, mothers who took an antidepressant during all 3 trimesters of pregnancy were 37% less likely to be breastfeeding upon hospital discharge. Mothers who took an antidepressant only during the third trimester were 75% less likely to be breastfeeding at discharge. Those who took an antidepressant only during the first and second trimesters did not have a reduced likelihood of breastfeeding at discharge.[5] The antidepressants used by the mothers were not specified.

A retrospective cohort study of hospital electronic medical records from 2001 to 2008 compared women who had been dispensed an antidepressant during late gestation (n = 575) to those who had a psychiatric illness but did not receive an antidepressant (n = 1552) and mothers who did not have a psychiatric diagnosis (n = 30,535).

Women who received an antidepressant were 37% less likely to be breastfeeding at discharge than women without a psychiatric diagnosis, but no less likely to be breastfeeding than untreated mothers with a psychiatric diagnosis.[6] None of the mothers were taking desvenlafaxine.

Alternate Drugs to Consider

Nortriptyline, Paroxetine, Sertraline

References

1. Rampono J, Teoh S, Hackett LP et al. Estimation of desvenlafaxine transfer into milk and infant exposure during its use in lactating women with postnatal depression. *Arch Womens Ment Health*. 2011;14:49-53. PubMed PMID: 20960017.
2. Weissman AM, Levy BT, Hartz AJ et al. Pooled analysis of antidepressant levels in lactating mothers, breast milk, and nursing infants. *Am J Psychiatry*. 2004;161:1066-78. PubMed PMID: 15169695.
3. Ilett KF, Watt F, Hackett LP, Kohan R, Teoh S. Assessment of infant dose through milk in a lactating woman taking amisulpride and desvenlafaxine for treatment-resistant depression. *Ther Drug Monit*. 2010;32:704-7. PubMed PMID: 20926994.
4. Tourian KA, Pitrosky B, Padmanabhan SK, Rosas GR. A 10-month, open-label evaluation of desvenlafaxine in outpatients with major depressive disorder. *Prim Care Companion J Clin Psych*. 2011;13. PubMed PMID: 15303249.
5. Venkatesh KK, Castro VM, Perlis RH et al. Impact of antidepressant treatment during pregnancy on obstetric outcomes among women previously treated for depression: An observational cohort study. *J Perinatol*. 2017;37:1003-9. PubMed PMID: 28682318.
6. Leggett C, Costi L, Morrison JL et al. Antidepressant use in late gestation and breastfeeding rates at discharge from hospital. *J Hum Lact*. 2017;33:701-9. PubMed PMID: 28984528.

Substance Identification

Substance Name

Desvenlafaxine

CAS Registry Number

93413-62-8

Drug Class

Breast Feeding

Lactation

Serotonin Uptake Inhibitors

Antidepressive Agents

Antidepressive Agents, Second-Generation