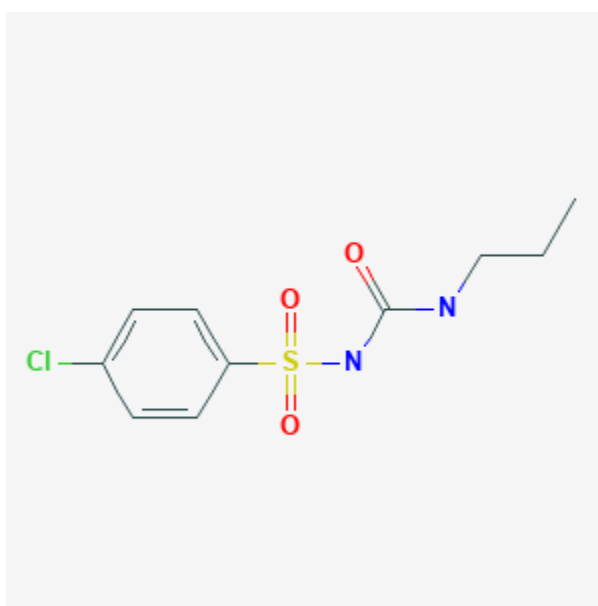




Chlorpropamide

Revised: October 31, 2018.

CASRN: 94-20-2



Drug Levels and Effects

Summary of Use during Lactation

Limited data indicate that amounts of chlorpropamide in breastmilk are unlikely to affect a breastfed infant. Short-acting drugs are generally preferred while breastfeeding a neonate to avoid drug accumulation. Monitor breastfed infants for signs of hypoglycemia such as jitteriness, excessive sleepiness, poor feeding, seizures cyanosis, apnea, or hypothermia. If there is concern, monitoring of the breastfed infant's blood glucose is advisable during maternal therapy with hypoglycemic agents.[1][2]

Drug Levels

Maternal Levels. No studies on the excretion of chlorpropamide into breastmilk have been published. The manufacturer states that a level of 5 mg/L was found in breastmilk 5 hours after a 500 mg dose; however, no study details were given.[1][3]

Disclaimer: Information presented in this database is not meant as a substitute for professional judgment. You should consult your healthcare provider for breastfeeding advice related to your particular situation. The U.S. government does not warrant or assume any liability or responsibility for the accuracy or completeness of the information on this Site .

Infant Levels. Relevant published information was not found as of the revision date.

Effects in Breastfed Infants

Relevant published information was not found as of the revision date.

Effects on Lactation and Breastmilk

Relevant published information was not found as of the revision date.

Alternate Drugs to Consider

Acarbose, Glipizide, Glyburide, Insulin, Metformin, Miglitol

References

1. Everett JA. Use of oral antidiabetic agents during breastfeeding. *J Hum Lact.* 1997;13:319-21. PubMed PMID: 9429368.
2. Berlin CM, Briggs GG. Drugs and chemicals in human milk. *Semin Fetal Neonatal Med.* 2005;10:149-59. PubMed PMID: 15701580.
3. Briggs GG, Freeman RK, Yaffe SJ. *Drugs in pregnancy and lactation.* 6th ed. Baltimore: Williams & Wilkins, 2002.

Substance Identification

Substance Name

Chlorpropamide

CAS Registry Number

94-20-2

Drug Class

Breast Feeding

Lactation

Hypoglycemic Agents

Sulfonylurea Compounds