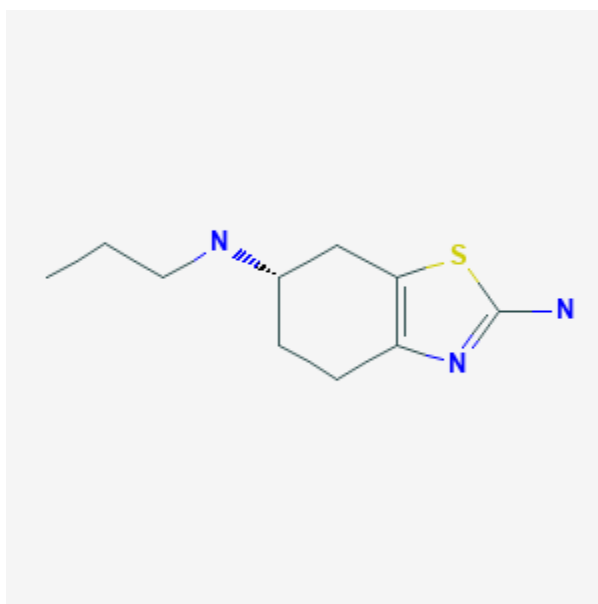




## Pramipexole

Revised: October 31, 2018.

CASRN: 104632-26-0



## Drug Levels and Effects

### Summary of Use during Lactation

No information is available on the use of pramipexole during breastfeeding, but it suppresses serum prolactin and may interfere with breastfeeding. An alternate drug may be preferred, especially while nursing a newborn or preterm infant.

### Drug Levels

*Maternal Levels.* Relevant published information was not found as of the revision date.

*Infant Levels.* Relevant published information was not found as of the revision date.

## Effects in Breastfed Infants

Relevant published information was not found as of the revision date.

## Effects on Lactation and Breastmilk

Relevant published information in nursing mothers was not found as of the revision date. Pramipexole lowers serum prolactin.[1] The prolactin level in a mother with established lactation may not affect her ability to breastfeed.

## References

1. Schilling JC, Adamus WS, Palluk R. Neuroendocrine and side effect profile of pramipexole, a new dopamine receptor agonist, in humans. *Clin Pharmacol Ther.* 1992;51:541-8. PubMed PMID: 1350237.

## Substance Identification

### Substance Name

Pramipexole

### CAS Registry Number

104632-26-0

### Drug Class

Breast Feeding

Lactation

Antiparkinson Agents

Dopamine Agonists