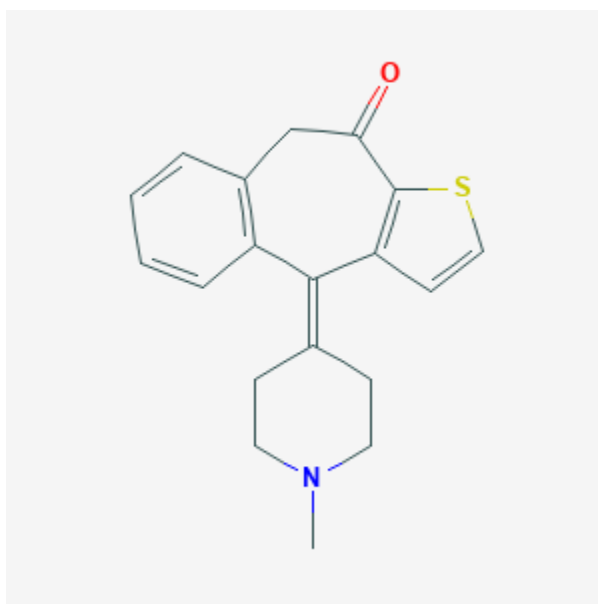




Ketotifen

Revised: October 31, 2018.

CASRN: 34580-13-7



Drug Levels and Effects

Summary of Use during Lactation

Because absorption from the eye is limited, ketotifen would not be expected to cause any adverse effects in breastfed infants after maternal use of ketotifen eye drops. To substantially diminish the amount of drug that reaches the breastmilk after using eye drops, place pressure over the tear duct by the corner of the eye for 1 minute or more, then remove the excess solution with an absorbent tissue.

Drug Levels

Maternal Levels. Relevant published information was not found as of the revision date.

Infant Levels. Relevant published information was not found as of the revision date.

Effects in Breastfed Infants

Relevant published information was not found as of the revision date.

Effects on Lactation and Breastmilk

Relevant published information was not found as of the revision date.

Alternate Drugs to Consider

Cromolyn

Substance Identification

Substance Name

Ketotifen

CAS Registry Number

34580-13-7

Drug Class

Breast Feeding

Lactation

Anti-Allergic Agents

Antihistamines

Antipruritic