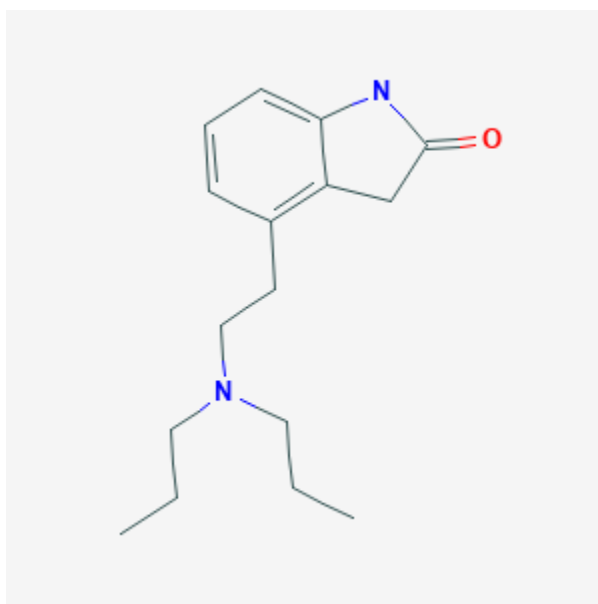




## Ropinirole

Revised: October 31, 2018.

CASRN: 91374-21-9



## Drug Levels and Effects

### Summary of Use during Lactation

No information is available on the use of ropinirole during breastfeeding, but it suppresses serum prolactin and may interfere with breastfeeding. An alternate drug may be preferred, especially while nursing a newborn or preterm infant.

### Drug Levels

*Maternal Levels.* Relevant published information was not found as of the revision date.

*Infant Levels.* Relevant published information was not found as of the revision date.

## Effects in Breastfed Infants

Relevant published information was not found as of the revision date.

## Effects on Lactation and Breastmilk

Relevant published information in nursing mothers was not found as of the revision date. Ropinirole lowers serum prolactin.[1] The prolactin level in a mother with established lactation may not affect her ability to breastfeed.

## References

1. Acton G, Broom C. A dose rising study of the safety and effects on serum prolactin of SK&F 101468, a novel dopamine d2-receptor agonist. *Br J Clin Pharmacol.* 1989;28:435-41. PubMed PMID: 2574051.

## Substance Identification

### Substance Name

Ropinirole

### CAS Registry Number

91374-21-9

### Drug Class

Breast Feeding

Lactation

Antiparkinson Agents

Dopamine Agonists