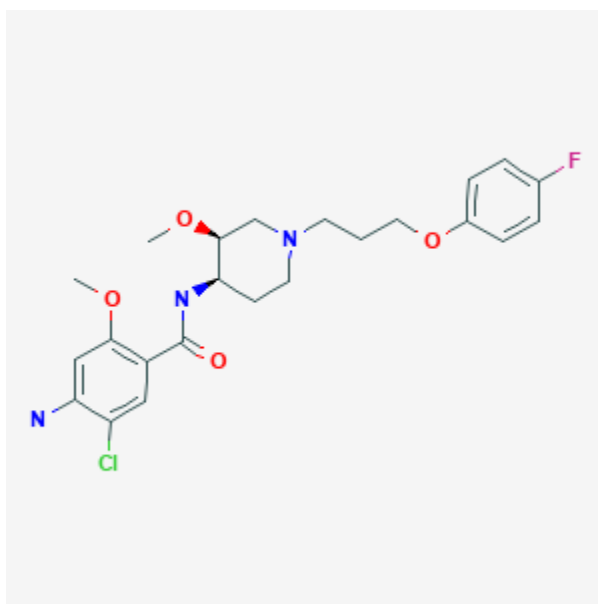




## Cisapride

Revised: October 31, 2018.

CASRN: 81098-60-4



## Drug Levels and Effects

### Summary of Use during Lactation

Cisapride was removed from the market in the United States by the U.S. Food and Drug Administration because of cardiac toxicity. Because of the low levels of cisapride in breastmilk, its use is acceptable in nursing mothers if it is required.

### Drug Levels

*Maternal Levels.* Ten women who averaged 1.2 days postpartum were given cisapride 20 mg orally every 8 hours for 4 days. Cisapride milk samples obtained before and 1 hour after the midday dose on day 4 were 4.8 mcg/L and 6.2 mcg/L, respectively.[1] The peak concentration corresponds to a maximum dose of 0.93 mcg/kg daily which is less than the 0.6 to 0.8 mg/kg daily infant dosage and about 0.1% of the maternal weight-adjusted dosage.

**Disclaimer:** Information presented in this database is not meant as a substitute for professional judgment. You should consult your healthcare provider for breastfeeding advice related to your particular situation. The U.S. government does not warrant or assume any liability or responsibility for the accuracy or completeness of the information on this Site .

*Infant Levels.* Relevant published information was not found as of the revision date.

### **Effects in Breastfed Infants**

Relevant published information was not found as of the revision date.

### **Effects on Lactation and Breastmilk**

Relevant published information was not found as of the revision date.

### **Alternate Drugs to Consider**

Metoclopramide

### **References**

1. Hofmeyr GJ, Sonnendecker EWW. Secretion of the gastrokinetic agent cisapride in human milk. *Eur J Clin Pharmacol.* 1986;30:735-6. PubMed PMID: 3770067.

## **Substance Identification**

### **Substance Name**

Cisapride

### **CAS Registry Number**

81098-60-4

### **Drug Class**

Breast Feeding

Lactation

Gastrointestinal Agents

Serotonin Agonists