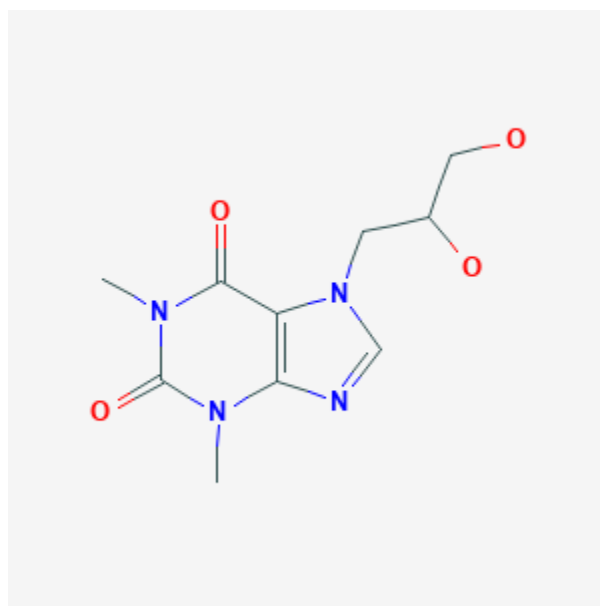




Dyphylline

Revised: October 31, 2018.

CASRN: 479-18-5



Drug Levels and Effects

Summary of Use during Lactation

Because of the relatively high levels in milk and a previous report with theophylline, occasional stimulant effects in infants should be anticipated in breastfed infants. No severe adverse reactions are expected. Amounts in milk can be minimized by avoiding breastfeeding for 3 to 4 hours after a dose.

Drug Levels

Maternal Levels. After intramuscular administration of a single 5 mg/kg dose of dyphylline, peak milk levels usually occurred between 2 and 4 hours after the dose in 20 subjects. Peak milk levels averaged 24.3 mg/L.[1]

Infant Levels. Relevant published information was not found as of the revision date.

Effects in Breastfed Infants

Relevant published information was not found as of the revision date.

Effects on Lactation and Breastmilk

Relevant published information was not found as of the revision date.

Alternate Drugs to Consider

Albuterol, Aminophylline, Theophylline

References

1. Jarboe CH, Cook LN, Malesic I, Fleischaker J. Dyphylline elimination kinetics in lactating women: blood to milk transfer. *J Clin Pharmacol.* 1981;21:405-10. PubMed PMID: 7309903.

Substance Identification

Substance Name

Dyphylline

CAS Registry Number

479-18-5

Drug Class

Breast Feeding

Lactation

Anti-Asthmatic Agents

Bronchodilator Agents