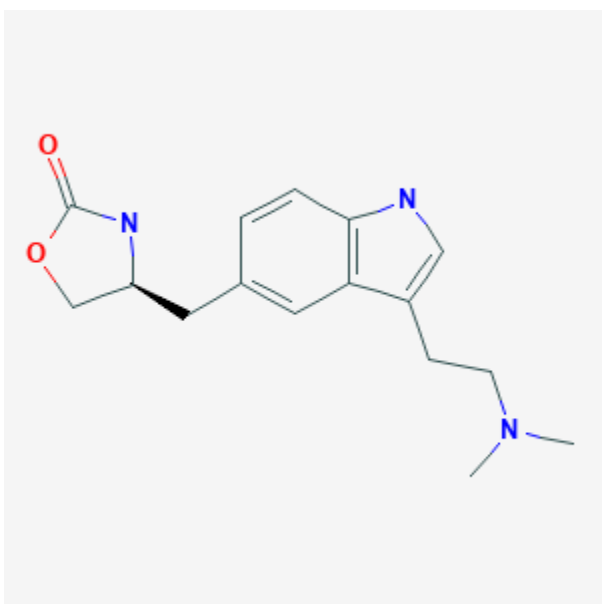




## Zolmitriptan

Revised: February 17, 2020.

CASRN: 139264-17-8



## Drug Levels and Effects

### Summary of Use during Lactation

Preliminary evidence indicates that zolmitriptan levels in breastmilk are low. Amounts ingested by the infant are small and unlikely to affect the nursing infant, especially if the infant is older than 2 months.

### Drug Levels

*Maternal Levels.* Four women who were at least 1 month postpartum using zolmitriptan to treat migraine provided milk samples at intervals over a 24-hour period after a single dose. The authors estimated the weight-adjusted infant dosage to be 2.1% (range 0.7 to 5.3%).<sup>[1]</sup>

*Infant Levels.* Relevant published information was not found as of the revision date.

## Effects in Breastfed Infants

Relevant published information was not found as of the revision date.

## Effects on Lactation and Breastmilk

Relevant published information was not found as of the revision date.

## Alternate Drugs to Consider

Eletriptan, Rizatriptan, Sumatriptan

## References

1. Amundsen S, Nordeng H, Fuskevåg OM, et al. Transfer of triptans into human breast milk and estimation of infant drug exposure through breastfeeding. *Reprod Toxicol.* 2019;88:141. doi: [10.1016/j.reprotox.2019.05.032](https://doi.org/10.1016/j.reprotox.2019.05.032).

## Substance Identification

### Substance Name

Zolmitriptan

### CAS Registry Number

139264-17-8

### Drug Class

Breast Feeding

Lactation

Serotonin Agonists

Vasoconstrictor Agents

Serotonin 5-HT1 Receptor Agonists

Triptans