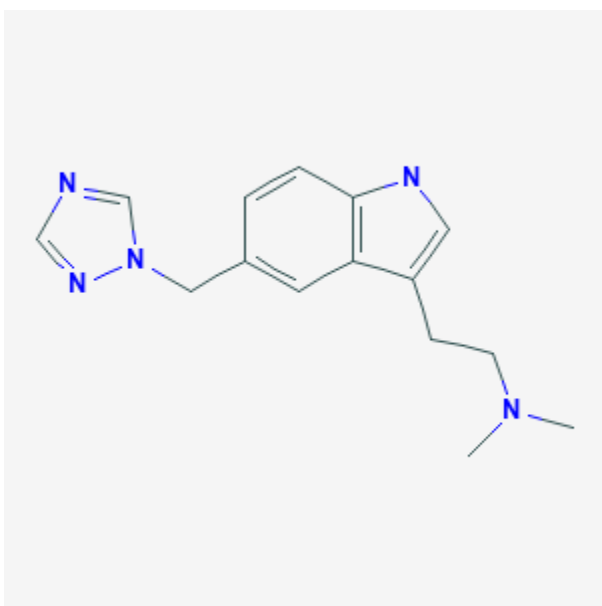




Rizatriptan

Revised: February 17, 2020.

CASRN: 144034-80-0



Drug Levels and Effects

Summary of Use during Lactation

Preliminary evidence indicates that rizatriptan levels in breastmilk are low. Amounts ingested by the infant are small and unlikely to affect the nursing infant, especially if the infant is older than 2 months.

Drug Levels

Maternal Levels. Five women who were at least 1 month postpartum using rizatriptan to treat migraine provided milk samples at intervals over a 24-hour period after a single dose. The authors estimated the weight-adjusted infant dosage to be 0.9% (range 0.3 to 1.4%).^[1]

Infant Levels. Relevant published information was not found as of the revision date.

Effects in Breastfed Infants

Relevant published information was not found as of the revision date.

Effects on Lactation and Breastmilk

Relevant published information was not found as of the revision date.

Alternate Drugs to Consider

Eletriptan, Sumatriptan, Zolmitriptan

References

1. Amundsen S, Nordeng H, Fuskevåg OM, et al. Transfer of triptans into human breast milk and estimation of infant drug exposure through breastfeeding. *Reprod Toxicol.* 2019;88:141. doi: [10.1016/j.reprotox.2019.05.032](https://doi.org/10.1016/j.reprotox.2019.05.032).

Substance Identification

Substance Name

Rizatriptan

CAS Registry Number

144034-80-0

Drug Class

Breast Feeding

Lactation

Serotonin Agonists

Vasoconstrictor Agents

Serotonin 5-HT₁ Receptor Agonists

Triptans