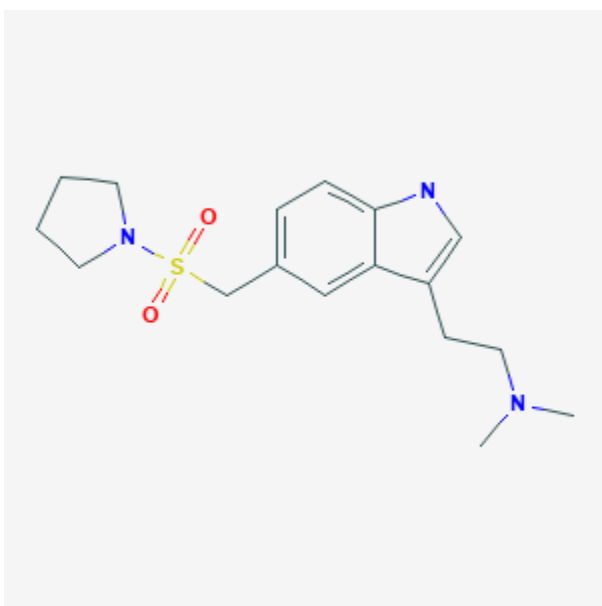




## Almotriptan

Revised: February 17, 2020.

CASRN: 154323-57-6



## Drug Levels and Effects

### Summary of Use during Lactation

Because there is little published experience with almotriptan during breastfeeding, other agents may be preferred, especially while nursing a newborn or preterm infant.

### Drug Levels

*Maternal Levels.* One woman who was over 1 month postpartum using naratriptan to treat migraine provided milk samples at intervals over a 24-hour period after a single dose. The authors estimated the weight-adjusted infant dosage to be 1.8%.<sup>[1]</sup>

*Infant Levels.* Relevant published information was not found as of the revision date.

## Effects in Breastfed Infants

Relevant published information was not found as of the revision date.

## Effects on Lactation and Breastmilk

Relevant published information was not found as of the revision date.

## Alternate Drugs to Consider

Eletriptan, Rizatriptan, Sumatriptan, Zolmitriptan

## References

1. Amundsen S, Nordeng H, Fuskevåg OM, et al. Transfer of triptans into human breast milk and estimation of infant drug exposure through breastfeeding. *Reprod Toxicol.* 2019;88:141. doi: [10.1016/j.reprotox.2019.05.032](https://doi.org/10.1016/j.reprotox.2019.05.032).

## Substance Identification

### Substance Name

Almotriptan

### CAS Registry Number

154323-57-6

### Drug Class

Breast Feeding

Lactation

Serotonin Agonists

Vasoconstrictor Agents

Serotonin 5-HT<sub>1</sub> Receptor Agonists

Triptans