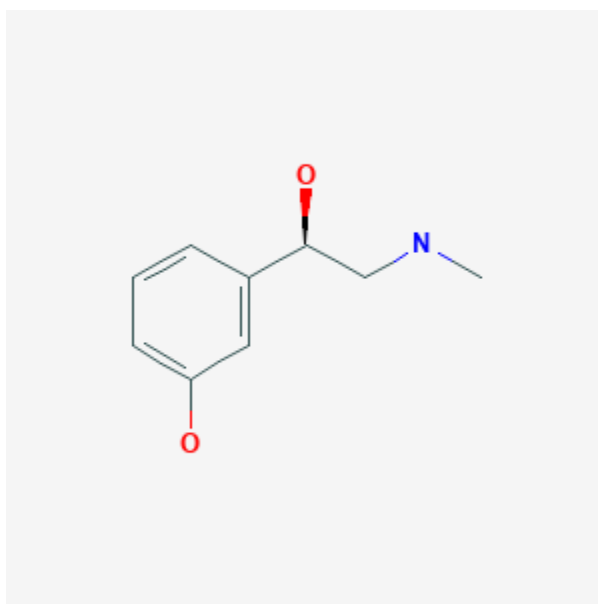




Phenylephrine

Revised: October 31, 2018.

CASRN: 59-42-7



Drug Levels and Effects

Summary of Use during Lactation

The oral bioavailability of phenylephrine is only about 40%,^[1] so the drug is unlikely to reach the infant in large amounts. However, intravenous or oral administration of phenylephrine might decrease milk production. Because no information is available on the use of oral phenylephrine during breastfeeding, an alternate drug may be preferred, especially while nursing a newborn or preterm infant.

Phenylephrine nasal spray or ophthalmic drops are less likely to decrease lactation. To substantially diminish the effect of the drug after using eye drops, place pressure over the tear duct by the corner of the eye for 1 minute or more, then remove the excess solution with an absorbent tissue.

Drug Levels

Maternal Levels. Relevant published information was not found as of the revision date.

Infant Levels. Relevant published information was not found as of the revision date.

Effects in Breastfed Infants

Relevant published information was not found as of the revision date.

Effects on Lactation and Breastmilk

Relevant published information in humans was not found as of the revision date. However, animal data indicate that phenylephrine can decrease milk production[2][3] and pseudoephedrine, a pharmacologically similar vasoconstrictor, decreases milk production in nursing mothers after oral use.[4]

Alternate Drugs to Consider

Oxymetazoline

References

1. Eccles R. Substitution of phenylephrine for pseudoephedrine as a nasal decongestant. An illogical way to control methamphetamine abuse. *Br J Clin Pharmacol.* 2007;63:10-4. PubMed PMID: 17116124.
2. Bruckmaier R, Mayer H, Schams D. Effects of alpha- and beta-adrenergic agonists in intramammary pressure and milk flow in dairy cows. *J Dairy Res.* 1991;58:411-9. PubMed PMID: 1684977.
3. Inderwies T, Pfaffl MW, Bruckmaier RM. Milking characteristics and their relation to adrenergic receptor mRNA expression and ligand binding in the mammary gland of dairy cows. *Domest Anim Endocrinol.* 2003;25:275-86. PubMed PMID: 14550511.
4. Aljazaf K, Hale TW, Ilett KF et al. Pseudoephedrine: effects on milk production in women and estimation of infant exposure via breastmilk. *Br J Clin Pharmacol.* 2003;56:18-24. PubMed PMID: 12848771.

Substance Identification

Substance Name

Phenylephrine

CAS Registry Number

59-42-7

Drug Class

Breast Feeding

Lactation

Adrenergic Agents

Adrenergic Alpha-Agonists

Antiglaucoma Agents

Sympathomimetics

Vasoconstrictor Agents

Nasal Decongestants