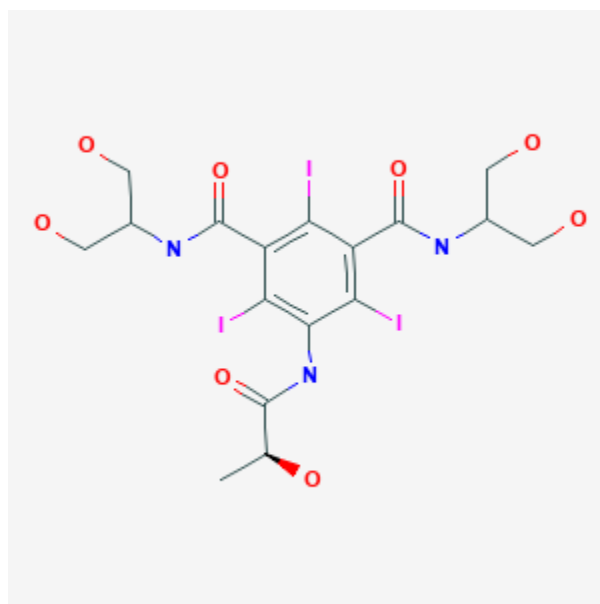




Iopamidol

Revised: October 31, 2018.

CASRN: 60166-93-0



Drug Levels and Effects

Summary of Use during Lactation

Intravenous iodinated contrast media are poorly excreted into breastmilk and poorly absorbed orally so they are not likely to reach the bloodstream of the infant or cause any adverse effects in breastfed infants. Guidelines developed by several professional organizations state that breastfeeding need not be disrupted after a nursing mother receives a iodine-containing contrast medium.[1][2][3][4] However, because there is no published experience with iopamidol during breastfeeding, other agents may be preferred, especially while nursing a newborn or preterm infant.

Drug Levels

Maternal Levels. Relevant published information was not found as of the revision date.

Infant Levels. Relevant published information was not found as of the revision date.

Effects in Breastfed Infants

Relevant published information was not found as of the revision date.

Effects on Lactation and Breastmilk

Relevant published information was not found as of the revision date.

Alternate Drugs to Consider

Diatrizoate, Iohexol

References

1. American College of Radiology Committee on Drugs and Contrast Media. Administration of contrast media to breast-feeding mothers. In, ACR manual on contrast media. 2017;Version 10.3:102-3. Available at: <https://www.acr.org/~media/37D84428BF1D4E1B9A3A2918DA9E27A3.pdf>
2. Webb JA, Thomsen HS, Morcos SK et al. The use of iodinated and gadolinium contrast media during pregnancy and lactation. *Eur Radiol.* 2005;15:1234-40. PubMed PMID: 15609057.
3. Chen MM, Coakley FV, Kaimal A, Laros RK Jr. Guidelines for computed tomography and magnetic resonance imaging use during pregnancy and lactation. *Obstet Gynecol.* 2008;112:333-40. PubMed PMID: 18669732.
4. Committee Opinion No. 723: Guidelines for Diagnostic Imaging During Pregnancy and Lactation. *Obstet Gynecol.* 2017;130:e210-e216. PubMed PMID: 28937575.

Substance Identification

Substance Name

Iopamidol

CAS Registry Number

60166-93-0

Drug Class

Breast Feeding

Lactation

Contrast Media

Diagnostic Agents