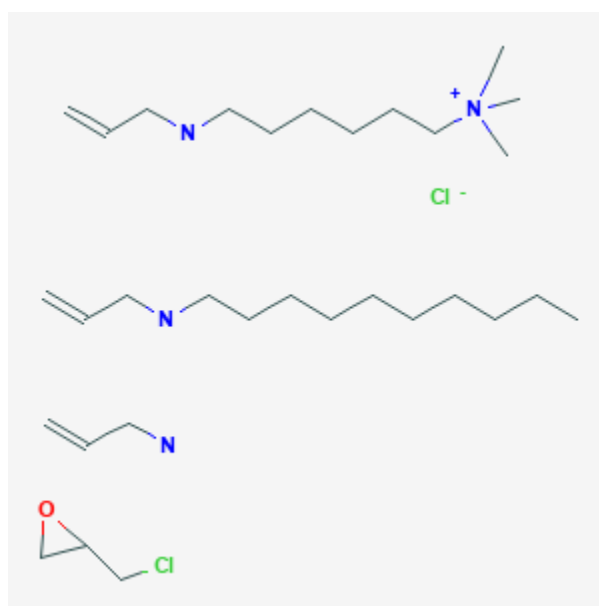




Colesevelam

Revised: October 31, 2018.

CASRN: 182815-43-6



Drug Levels and Effects

Summary of Use during Lactation

Colesevelam is a nonabsorbable resin. Because it does not enter the mother's bloodstream, it will not reach the infant via breastmilk. It is acceptable for use during lactation.

Drug Levels

Maternal Levels. Relevant published information was not found as of the revision date.

Infant Levels. Relevant published information was not found as of the revision date.

Effects in Breastfed Infants

Relevant published information was not found as of the revision date.

Disclaimer: Information presented in this database is not meant as a substitute for professional judgment. You should consult your healthcare provider for breastfeeding advice related to your particular situation. The U.S. government does not warrant or assume any liability or responsibility for the accuracy or completeness of the information on this Site .

Effects on Lactation and Breastmilk

Relevant published information was not found as of the revision date.

Alternate Drugs to Consider

(Hypercholesterolemia) Cholestyramine, Colestipol; (Type 2 Diabetes) Acarbose, Glipizide, Glyburide, Insulin, Metformin, Miglitol

Substance Identification

Substance Name

Colesevelam

CAS Registry Number

182815-43-6

Drug Class

Breast Feeding

Lactation

Anticholesteremic Agents

Antilipemic Agents

Hypoglycemic Agents