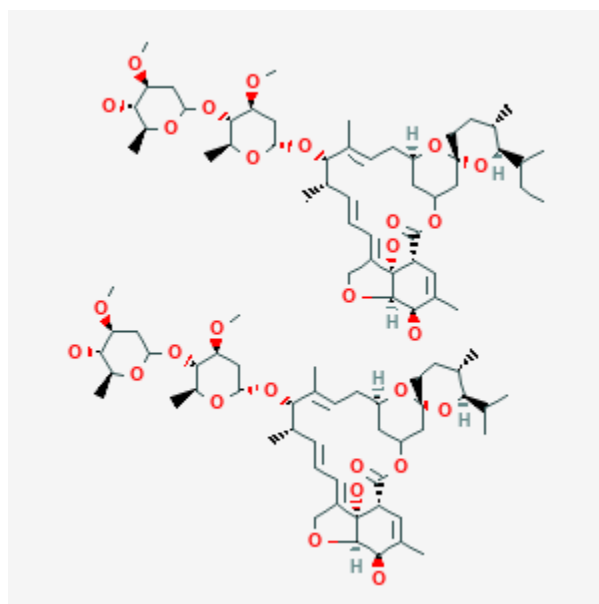




## Ivermectin

Revised: October 31, 2018.

CASRN: 70288-86-7



## Drug Levels and Effects

### Summary of Use during Lactation

Limited data indicate that ivermectin is poorly excreted into breastmilk after oral administration. Amounts ingested by the infant are small and would not be expected to cause any adverse effects in breastfed infants. No data are available on excretion after topical administration, but amounts in breastmilk should be less than after oral administration. Avoid application to the breast area where the infant might directly ingest the drug.

### Drug Levels

*Maternal Levels.* Four mothers who had lost their infants at term were given a single 150 mcg/kg dose of oral ivermectin. Ivermectin was detected in milk within 1 hour after the dose and for 72 hours after the dose. The average peak milk level was 15 mcg/L (range 11 to 21 mcg/L) and occurred 4 hours after the dose in 2 women, 6 hours in another and 12 hours after the dose in the fourth. The mean milk level was 9.85 mcg/L.[1][2] Using the

**Disclaimer:** Information presented in this database is not meant as a substitute for professional judgment. You should consult your healthcare provider for breastfeeding advice related to your particular situation. The U.S. government does not warrant or assume any liability or responsibility for the accuracy or completeness of the information on this Site .

mean milk level data from this study, an exclusively breastfed infant would receive an average dose of 1.47 mcg/kg after a maternal dose of 150 mcg/kg, or 0.98% of the weight-adjusted maternal dose.

*Infant Levels.* Relevant published information was not found as of the revision date.

## Effects in Breastfed Infants

Relevant published information was not found as of the revision date.

## Effects on Lactation and Breastmilk

Relevant published information was not found as of the revision date.

## References

1. Ogbuokiri JE, Ozumba BC, Okonkwo PO. Ivermectin levels in human breastmilk. *Eur J Clin Pharmacol.* 1993;45:389-90. PubMed PMID: 8299677.
2. Ogbuokiri JE, Ozumba BC, Okonkwo PO. Ivermectin levels in human breast milk. *Eur J Clin Pharmacol.* 1994;46:89-90. Letter. PubMed PMID: 8005194.

## Substance Identification

### Substance Name

Ivermectin

### CAS Registry Number

70288-86-7

### Drug Class

Breast Feeding

Lactation

Anti-Infective Agents

Antiparasitic Agents

Insecticides

Macrolides