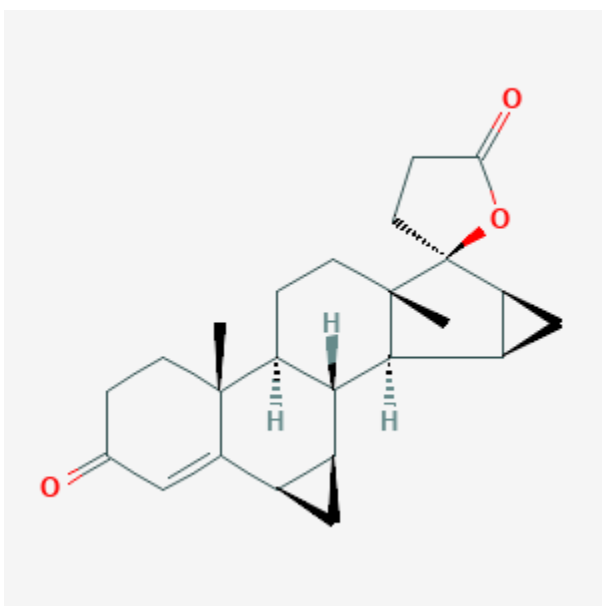




Drospirenone

Revised: February 17, 2020.

CASRN: 67392-87-4



Drug Levels and Effects

Summary of Use during Lactation

Drospirenone is a progestin that is an analogue of spironolactone. It has antimineralocorticoid and antiandrogenic activities. Amounts in milk are very low and no adverse effects on the breastfed infant or milk supply are expected. Based on the available evidence, expert opinion holds that nonhormonal methods are preferred during breastfeeding and progestin-only contraceptives are preferred over combined oral contraceptives in breastfeeding women, especially during the first 4 weeks postpartum. For further information, consult the record entitled, "Contraceptives, Oral, Combined."

Drug Levels

Maternal Levels. Six women who were between 1 week and 3 months postpartum received a single dose of drospirenone 3 mg plus ethinyl estradiol 30 mcg. Milk was collected for 72 hours after the dose in 2 of the

Disclaimer: Information presented in this database is not meant as a substitute for professional judgment. You should consult your healthcare provider for breastfeeding advice related to your particular situation. The U.S. government does not warrant or assume any liability or responsibility for the accuracy or completeness of the information on this Site .

women in whom half-lives in breastmilk were 8.3 and 15.5 hours. The average peak milk level in the 6 women was 13.5 mcg/L at 2.8 hours after the dose. The average drospirenone milk level in the first 24 hours was 3.7 mcg/L (range 1.4 to 7 mcg/L). The authors estimated that a fully breastfed infant would receive a drospirenone dose of about 3 mcg daily.[1] Using the average serum level data, an exclusively breastfed infant would receive 1.1% of the weight-adjusted maternal dosage of drospirenone.

The manufacturer of drospirenone tablets reports that with a dose of 4 mg daily, the average milk concentration is 5.6 mcg/L. Based on this concentration, the estimated average infant daily dosages for an exclusively breastfed infant would be 0.840 mcg/kg daily, which corresponds to a relative infant dose of 1.5% of the maternal weight-adjusted dosage.

Infant Levels. Relevant published information was not found as of the revision date.

Effects in Breastfed Infants

Relevant published information was not found as of the revision date.

Effects on Lactation and Breastmilk

Relevant published information was not found as of the revision date.

Alternate Drugs to Consider

Etonogestrel, Intrauterine Copper Contraceptive, Oral Levonorgestrel, Intrauterine Levonorgestrel, Levonorgestrel Implant, Medroxyprogesterone Acetate, Norethindrone, Progesterone

References

1. Blode H, Foidart JM, Heithecker R. Transfer of drospirenone to breast milk after a single oral administration of 3 mg drospirenone + 30 mcg ethinylestradiol to healthy lactating women. *Eur J Contracept Reprod Health Care.* 2001;6:167-71. PubMed PMID: 11763981.

Substance Identification

Substance Name

Drospirenone

CAS Registry Number

67392-87-4

Drug Class

Breast Feeding

Lactation

Aldosterone Antagonists

Contraceptive Agents, Female

Contraceptives, Oral, Synthetic