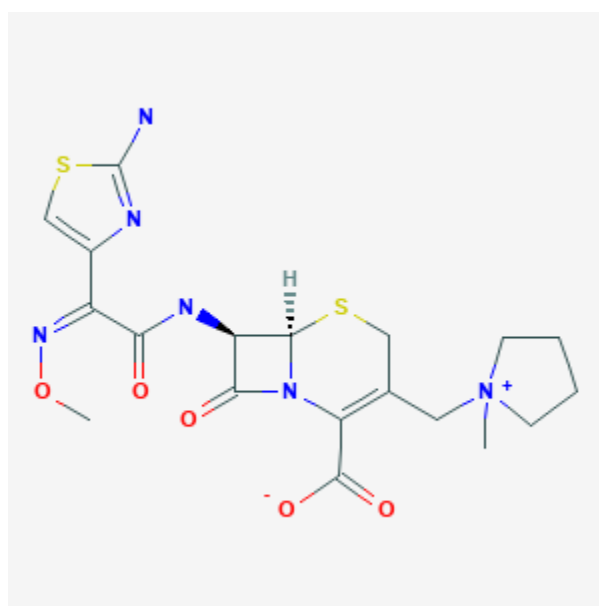




Cefepime

Revised: October 31, 2018.

CASRN: 88040-23-7



Drug Levels and Effects

Summary of Use during Lactation

Although no information is available on the use of cefepime during breastfeeding, the levels in breastmilk appear to be low and cephalosporins are generally not be expected to cause adverse effects in breastfed infants. Occasionally disruption of the infant's gastrointestinal flora, resulting in diarrhea or thrush have been reported with cephalosporins, but these effects have not been adequately evaluated. Cefepime is acceptable in nursing mothers.

Drug Levels

Maternal Levels. The manufacturer reports that the concentration of cefepime in breastmilk is 0.5 mcg/mL, although the dosage and study methodology are not reported.[1] This would be consistent with the low levels of other cephalosporins in breastmilk.

Disclaimer: Information presented in this database is not meant as a substitute for professional judgment. You should consult your healthcare provider for breastfeeding advice related to your particular situation. The U.S. government does not warrant or assume any liability or responsibility for the accuracy or completeness of the information on this Site .

Infant Levels. Relevant published information was not found as of the revision date. Reported Side Effects In Breastfed Infants: Relevant published information was not found as

Effects in Breastfed Infants

Relevant published information was not found as of the revision date.

Effects on Lactation and Breastmilk

Relevant published information was not found as of the revision date.

Alternate Drugs to Consider

Ceftazidime, Ceftriaxone

References

Anon. Maxipime package insert. Elan Pharmaceuticals, Inc. South San Francisco, CA. August, 2010.

Substance Identification

Substance Name

Cefepime

CAS Registry Number

88040-23-7

Drug Class

Breast Feeding

Lactation

Anti-Infective Agents

Antibacterial Agents

Cephalosporins