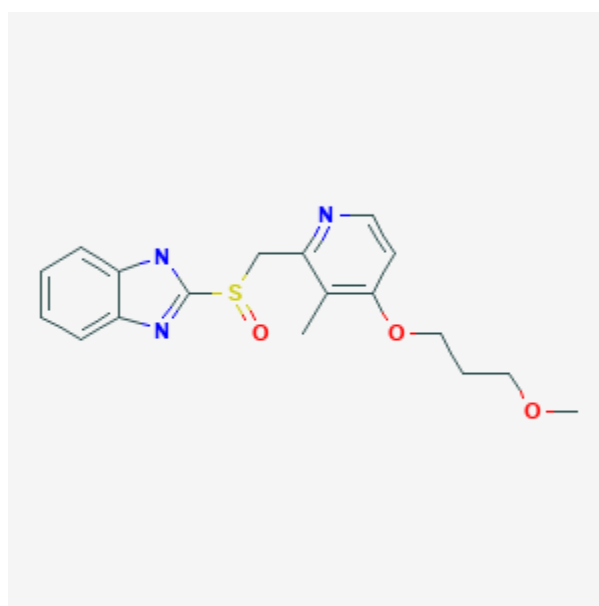




Rabeprazole

Revised: June 3, 2019.

CASRN: 117976-89-3



Drug Levels and Effects

Summary of Use during Lactation

Because no information is available on the use of rabeprazole during breastfeeding, an alternate drug may be preferred, especially while nursing a newborn or preterm infant.

Drug Levels

Maternal Levels. Relevant published information was not found as of the revision date.

Infant Levels. Relevant published information was not found as of the revision date.

Effects in Breastfed Infants

Relevant published information was not found as of the revision date.

Disclaimer: Information presented in this database is not meant as a substitute for professional judgment. You should consult your healthcare provider for breastfeeding advice related to your particular situation. The U.S. government does not warrant or assume any liability or responsibility for the accuracy or completeness of the information on this Site .

Effects on Lactation and Breastmilk

A retrospective claims database study in the United States found that users of proton pump inhibitors had an increased risk of gynecomastia.[1]

The Spanish pharmacovigilance system found one case of a 90-year-old man who developed gynecomastia associated with rabeprazole reported during the time period of 1982 to 2006. The reaction occurred after 32 days of therapy and resolved after discontinuation of the drug.[2]

Alternate Drugs to Consider

Cimetidine, Famotidine, Nizatidine, Omeprazole, Pantoprazole, Ranitidine, Sucralfate

References

1. Carvajal A, Macias D, Gutierrez A et al. Gynaecomastia associated with proton pump inhibitors: A case series from the Spanish Pharmacovigilance System. *Drug Saf.* 2007;30:527-31. PubMed PMID: 17536878.

Substance Identification

Substance Name

Rabeprazole

CAS Registry Number

117976-89-3

Drug Class

Breast Feeding

Lactation

Anti-Ulcer Agents

Gastrointestinal Agents

Proton Pump Inhibitors