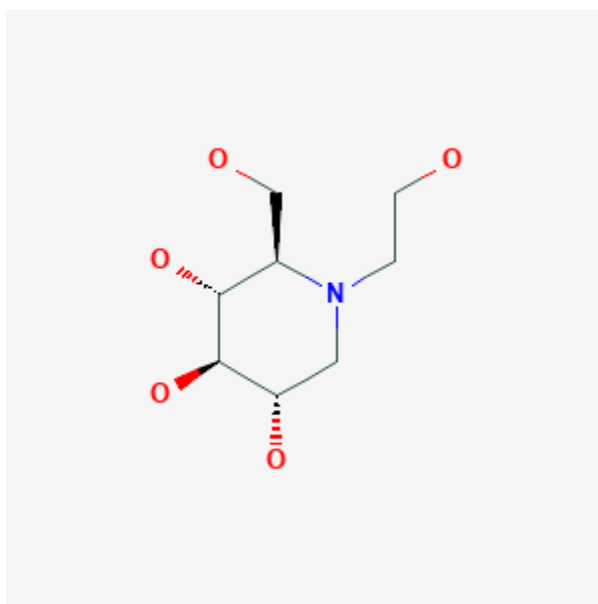




Miglitol

Revised: October 31, 2018.

CASRN: 72432-03-2



Drug Levels and Effects

Summary of Use during Lactation

Limited data indicate that miglitol is poorly excreted into breastmilk. Because miglitol is also poorly absorbed orally, it is unlikely to adversely affect the breastfed infant.

Drug Levels

Maternal Levels. No published information was found as of the revision date. According to the manufacturer, 0.02% of a 100 mg oral dose or 0.2% of the weight-adjusted maternal dosage is excreted into breastmilk.

Infant Levels. Relevant published information was not found as of the revision date.

Effects in Breastfed Infants

Relevant published information was not found as of the revision date.

Effects on Lactation and Breastmilk

Relevant published information was not found as of the revision date.

Alternate Drugs to Consider

Acarbose, Glipizide, Glyburide, Insulin, Metformin

Substance Identification

Substance Name

Miglitol

CAS Registry Number

72432-03-2

Drug Class

Breast Feeding

Lactation

Hypoglycemic Agents