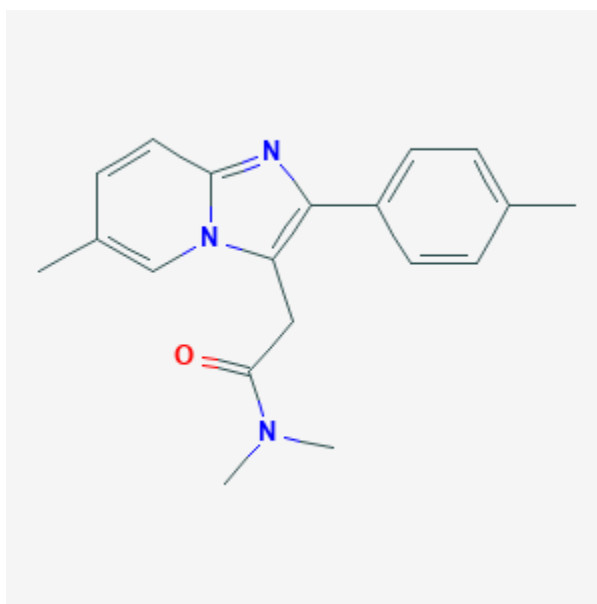




## Zolpidem

Revised: October 31, 2018.

CASRN: 82626-48-0



## Drug Levels and Effects

### Summary of Use during Lactation

Because of the low levels of zolpidem in breastmilk and its short half-life, amounts ingested by the infant are small and would not be expected to cause any adverse effects in breastfed infants. Monitor infants for excess sedation, hypotonia, and respiratory depression.

### Drug Levels

*Maternal Levels.* Five nursing mothers who were 3 to 4 days postpartum were given a single oral dose of zolpidem 20 mg. Milk collected 3 hours after the dose contained between 0.76 and 3.88 mcg of zolpidem. This corresponded to 0.004 to 0.019% of the maternal dosage. The drug was undetectable (<0.5 mcg/L) in milk 13 and 16 hours after the dose.[1]

*Infant Levels.* Relevant published information was not found as of the revision date.

### **Effects in Breastfed Infants**

Relevant published information was not found as of the revision date.

### **Effects on Lactation and Breastmilk**

Relevant published information was not found as of the revision date.

### **Alternate Drugs to Consider**

Zaleplon

### **References**

1. Pons G, Francoual C, Guillet P et al. Zolpidem excretion in breast milk. *Eur J Clin Pharmacol.* 1989;37:245-8. PubMed PMID: 2612539.

## **Substance Identification**

### **Substance Name**

Zolpidem

### **CAS Registry Number**

82626-48-0

### **Drug Class**

Breast Feeding

Lactation

Hypnotics and Sedatives