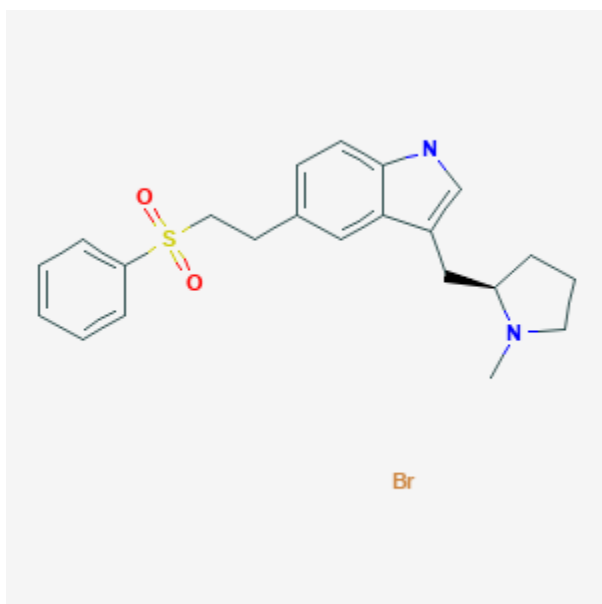




Eletriptan

Revised: February 17, 2020.

CASRN: 177834-92-3



Drug Levels and Effects

Summary of Use during Lactation

Limited information indicates that a maternal dose of eletriptan up to 80 mg daily produce low levels in milk and would not be expected to cause any adverse effects in breastfed infants, especially if the infant is older than 2 months.

Drug Levels

Eletriptan is metabolized to an active metabolite that has a longer half-life than eletriptan, but its serotonin agonist activity is only about 10% that of eletriptan.

Maternal Levels. Eight lactating women who were at least 1 month postpartum were given a single 80 mg oral dose of eletriptan. An average of 12.9 mcg was excreted in the 24 hours after the dose. At 24 hours, breastmilk

Disclaimer: Information presented in this database is not meant as a substitute for professional judgment. You should consult your healthcare provider for breastfeeding advice related to your particular situation. The U.S. government does not warrant or assume any liability or responsibility for the accuracy or completeness of the information on this Site .

levels averaged 1.7 mcg/L. The half-life in milk of eletriptan was 3.6 hours.[1] The active metabolite was not measured in breastmilk.

Three women who were at least 1 month postpartum using eletriptan to treat migraine provided milk samples at intervals over a 24-hour period after a single dose. The authors estimated the weight-adjusted infant dosage to be 0.6% (range 0.3 to 0.8%).[2]

Infant Levels. Relevant published information was not found as of the revision date.

Effects in Breastfed Infants

Relevant published information was not found as of the revision date.

Effects on Lactation and Breastmilk

Relevant published information was not found as of the revision date.

Alternate Drugs to Consider

Rizatriptan, Sumatriptan, Zolmitriptan

References

1. Research FDA Center for Drug Evaluation and. NDA 21-016. Clinical pharmacology and biopharmaceutics reviews. 2002:90. Accessed 1/25/2020. Available at: https://www.accessdata.fda.gov/drugsatfda_docs/nda/2002/21016_Relpax_BioPharmr.pdf
2. Amundsen S, Nordeng H, Fuskevåg OM, et al. Transfer of triptans into human breast milk and estimation of infant drug exposure through breastfeeding. *Reprod Toxicol.* 2019;88:141. doi: 10.1016/j.reprotox.2019.05.032.

Substance Identification

Substance Name

Eletriptan

CAS Registry Number

177834-92-3

Drug Class

Breast Feeding

Lactation

Serotonin Agonists

Vasoconstrictor Agents

Serotonin 5-HT1 Receptor Agonists

Triptans