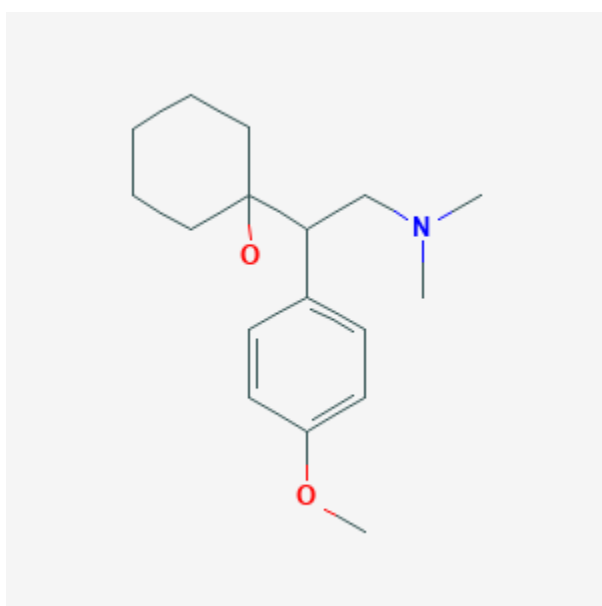




## Venlafaxine

Revised: October 23, 2019.

CASRN: 93413-69-5



## Drug Levels and Effects

### Summary of Use during Lactation

Infants receive venlafaxine and its active metabolite in breastmilk, and the metabolite of the drug can be found in the plasma of most breastfed infants; however, concurrent side effects have rarely been reported. Breastfed infants, especially newborn or preterm infants, should be monitored for excessive sedation and adequate weight gain if this drug is used during lactation, possibly including measurement of serum levels of desvenlafaxine (O-desmethylvenlafaxine), to rule out toxicity if there is a concern. However, newborn infants of mothers who took the drug during pregnancy may experience poor neonatal adaptation syndrome as seen with other antidepressants such as SSRIs or SNRIs. Use of venlafaxine during breastfeeding has been proposed as a method of mitigating infant venlafaxine withdrawal symptoms,[1][2] but this has not been rigorously demonstrated.

## Drug Levels

Venlafaxine is metabolized to a metabolite, desvenlafaxine, that has antidepressant activity similar to that of venlafaxine.[3]

*Maternal Levels.* Three mothers with infants aged 0.37, 1.3 and 6 months were taking venlafaxine in doses of 3.04 to 8.18 mg/kg daily for at least a week. Peak breastmilk levels of venlafaxine and its active metabolite, desvenlafaxine, occurred 1 to 3 hours after the dose in 2 of the mothers. Infants received an average of 7.6% (range 4.7 to 9.2%) of the maternal weight-adjusted dosage of venlafaxine plus desvenlafaxine.[4]

Six women averaging 7 months postpartum were receiving venlafaxine 225 to 300 mg daily for at least 18 days; 1 was taking the sustained-release (SR) formulation once daily and the others took 2 divided doses daily. In the women taking immediate-release product, the time of the peak milk levels averaged 2 hours (range 1.7 to 2.8 hours) for venlafaxine and 2.8 hours (range 1.8 to 4.2 hours) for desvenlafaxine. For the SR formulation, peak venlafaxine and desvenlafaxine levels occurred at 5.7 and 7.7 hours, respectively. The authors estimated that an exclusively breastfed infant would receive an average of 6.4% (range 5.2 to 7.4%) of the maternal weight-adjusted dosage of venlafaxine as the drug plus metabolite.[5]

Three women were taking venlafaxine during breastfeeding in doses of 37.5, 75 and 225 mg daily. Milk samples were taken 8 hours after a dose and measured for venlafaxine and desvenlafaxine. The infants were estimated to have received 11.8%, 3% and 6.3% of the weight-adjusted maternal dosage.[6]

In 3 women 8 to 30 weeks postpartum who were taking venlafaxine 75 to 225 mg daily, the authors calculated that their fully breastfed infants would receive an average of 5.2% of the maternal dosage, primarily as desvenlafaxine.[7]

A woman who was taking venlafaxine 375 mg daily during pregnancy and postpartum had a combined breastmilk level of 690 mcg/L of venlafaxine and 2 metabolites. The authors estimated that the breastfed infant was receiving at least 3.5% of the maternal weight-adjusted dosage.[1]

Two women who were 6.5 and 9.5 weeks postpartum and taking venlafaxine 75 mg and 225 mg daily had their milk measured at unreported times after their doses. The venlafaxine concentrations in their milk were 103 and 327 mcg/L, respectively.[8]

Eleven women taking an average of 194 mg of venlafaxine daily (1 as immediate-release and 10 as sustained-release) had their breastmilk venlafaxine and desvenlafaxine concentrations measured. The estimated excretion of the drug and metabolite into breastmilk was 8.1% (range 3.2 to 13.3%) of the weight-adjusted maternal dosage. The peak drug concentration in breastmilk occurred at about 8 hours after the dose; desvenlafaxine was the primary contributor to total milk concentration. The estimated infant dosage was 0.208 mg/kg daily (range 0.07 to 0.38 mg/kg daily),[9] which translates to 6.4% of the maternal weight-adjusted dosage.

A woman treated with venlafaxine 75 mg daily during the third trimester of pregnancy and during breastfeeding provided a trough milk samples during the first week postpartum. The milk level was 461 mcg/L, with a calculated weight-adjusted percentage of maternal dosage of 8.8%. This value might be inaccurate because of the timing of sample collection.[10]

Random milk samples were obtained from 5 women taking a median dosage of 75 mg (range 37.5 to 150 mg) of venlafaxine daily had a median venlafaxine milk concentration of 102 mcg/L (range 7.5 to 568 mcg/L) and a median desvenlafaxine milk concentration of 371 (range 72 to 1031 mcg/L). The authors calculated that this represents a combined median infant dosage of 77 (range 12 to 163) mcg/kg daily of the two drugs.[11]

*Infant Levels.* Three breastfed (extent not stated) infants aged 0.37, 1.3 and 6 months whose mothers were taking venlafaxine 3.04 to 8.18 mg/kg daily had undetectable (<10 mcg/L) venlafaxine and an average of 100 mcg/L (range 23 to 225 mcg/L) of desvenlafaxine in their plasma.[4]

Two mothers on stable doses of venlafaxine 75 and 150 mg daily exclusively breastfed their infants for 6 months. At ages 3 and 4 weeks, respectively, venlafaxine was undetectable (<10 mcg/L) in the serum of both infants. Desvenlafaxine was detectable in their serum at 16 and 21 mcg/L, respectively.[12]

Three breastfed (extent not stated) infants whose mothers were taking venlafaxine 37.5, 75 and 225 mg daily had blood samples taken 8 hours after the previous maternal dose. The infants, whose ages were 3, 10.4 and 14.6 weeks, had venlafaxine serum levels of 9 mcg/L, <3 mcg/L and undetectable; desvenlafaxine serum levels were <8, 7.5 and 12.5 mcg/L, respectively.[6]

Of 7 breastfed (extent not stated) infants with an average age of 7 months, including 1 set of twins, whose mothers were taking 225 to 300 mg of venlafaxine daily, only 1 (maternal dose 225 mg daily) had a measurable serum level of venlafaxine of 5 mcg/L (detection limit 1 mcg/L). Measurable desvenlafaxine serum levels were 3, 6, 20 and 38 mcg/L in 4 of the 7 infants.[5]

In 3 breastfed (extent not stated) infants aged 8 to 30 weeks whose mothers were taking venlafaxine 75 to 225 mg daily, their serum drug levels were 10.2% of those of their mothers, mostly as desvenlafaxine.[7]

Six nursing infants (average 20 weeks; range 7.3 to 60 weeks of age) whose mothers were taking an average of 206 mg daily of venlafaxine had their serum analyzed for venlafaxine and desvenlafaxine. Five were exclusively breastfed and 1 was about 50% breastfed. Five of the 6 had no detectable (<2 mcg/L) venlafaxine in their serum, and 1 had a concentration of 5 mcg/L. Two infants, including the one who was partially breastfed had no detectable desvenlafaxine in their serum; the other 4 had desvenlafaxine concentrations ranging from 4 to 243 mcg/L. The group of infants had an average serum concentrations of the drug and metabolite of 37% that of their mothers' serum.[9]

## Effects in Breastfed Infants

No acute adverse effects or abnormal weight gain were seen in 3 breastfed infants who had detectable serum levels of desvenlafaxine.[4]

No adverse effects on growth or in sleep, feeding or behavioral patterns were noticed clinically in 2 infants who were exclusively breastfed for 6 months during maternal therapy with venlafaxine 75 and 150 mg daily.[12]

Three mothers took an average venlafaxine dose of 162.5 mg once daily. They breastfed their infants exclusively for 4 months and at least 50% during months 5 and 6. Their infants had 6-month weight gains that were normal according to national growth standards.[13]

Seven infants (including 1 set of twins) breastfed for 2.7 to 10.3 months during maternal venlafaxine therapy. Three mothers were taking venlafaxine since birth and 3 were started later. Denver Developmental Screening Tests in all infants were normal. All but 2 had normal growth; these 2 had a decrease in weight gain.[5]

In 3 infants aged 8 to 30 weeks whose mothers were taking venlafaxine 75 to 225 mg daily, no adverse reactions were noted clinically at the time of the study.[7]

An newborn infant whose mother had been taking venlafaxine 375 mg daily during pregnancy had symptoms of lethargy, poor sucking ability, and dehydration at 2 days of age. The infant was allowed to breastfeed and the symptoms subsided over 1 week. The authors concluded that the symptoms were likely withdrawal symptoms that were mitigated by the venlafaxine in breastmilk.[1] Another infant whose mother was taking venlafaxine 300 mg daily was reported by the same center. In this case, the infant's symptoms of withdrawal improved

markedly on day 7 when breastfeeding was initiated, but no drugs levels were measured in milk or in the infant. [2]

Two nursing mothers were taking venlafaxine and quetiapine for postpartum depression; one was also taking trazodone. Their breastfed infants' development were tested at 12 to 13 months of age with the Bayley Scales. Scores were within normal limits on the mental, psychomotor and behavior scales. [14]

Thirteen infants whose mothers were taking venlafaxine in doses ranging from 37.5 to 300 mg daily were breastfed (11 exclusively and 2 about 50%). Three of the infants were also exposed to a second psychotropic drug in breastmilk: 1 each of buspirone, trazodone, quetiapine. None of the infants had any adverse reactions reported by their mothers or in their medical records. [9]

Two nursing mothers who were 6.5 and 9.5 weeks postpartum were taking venlafaxine in doses of 75 and 225 mg daily, respectively, in addition to quetiapine for major depression postpartum; one mother was also taking trazodone. Their breastfed infants' development were tested at 9 to 18 months of age with the Bayley Scales. Both infants had scores that were within normal limits. [8]

A mother was taking venlafaxine 75 mg daily for depression and anxiety, although when the drug was started is not clear from the report. Her 1-month-old infant was seen in a pediatric clinic and was demonstrating agitation, infantile colic, drowsiness, increased startle response, jitteriness and sleeplessness. The symptoms began at 1 week of age and became progressively worse over time and with breastfeeding. The symptoms were possibly caused by venlafaxine, although whether they represent a withdrawal reaction of direct drug effects cannot be determined. [15]

A woman with depression and anxiety was treated with venlafaxine 300 mg daily monotherapy beginning at 20 weeks of pregnancy. On day three of life, the infant had extensor posturing and cycling of the limbs which was thought to be seizure related. Clinical examination was normal. Her suck was noted to be strong but uncoordinated and the infant fatigued rapidly. The infant was partially breastfed initially, but when breastmilk feeding was discontinued, the infant's alertness improved and she gained 314 grams over 7 days. The authors felt that venlafaxine in breastmilk might have contributed to the infant's lethargy, especially given the high maternal dosage. The symptoms were possibly caused by venlafaxine in breastmilk. [16]

A woman was treated with venlafaxine 75 mg daily during the third trimester of pregnancy and during breastfeeding. Pediatric evaluation including neurologic assessment and brain ultrasound were conducted during the first 24 hours postpartum. Further follow-up was conducted at 6 or more months of age. The infant's clinical status was comparable to unexposed infants from the same pediatric department. [10]

## Effects on Lactation and Breastmilk

Cases of galactorrhea and elevated serum prolactin have been reported in which venlafaxine played a primary or secondary role in the etiology. [14][17][18][19][20][21][22][23] Galactorrhea with normal prolactin levels has also been reported. [24] The prolactin level in a mother with established lactation may not affect her ability to breastfeed.

One mother who was nursing a 10.3-month-old infant reported that her milk letdown took longer after starting venlafaxine 1 month earlier. [5]

An observational study looked at outcomes of 2859 women who took an antidepressant during the 2 years prior to pregnancy. Compared to women who did not take an antidepressant during pregnancy, mothers who took an antidepressant during all 3 trimesters of pregnancy were 37% less likely to be breastfeeding upon hospital discharge. Mothers who took an antidepressant only during the third trimester were 75% less likely to be breastfeeding at discharge. Those who took an antidepressant only during the first and second trimesters did not

have a reduced likelihood of breastfeeding at discharge.[25] The antidepressants used by the mothers were not specified.

A retrospective cohort study of hospital electronic medical records from 2001 to 2008 compared women who had been dispensed an antidepressant during late gestation (n = 575; venlafaxine n = 68) to those who had a psychiatric illness but did not receive an antidepressant (n = 1552) and mothers who did not have a psychiatric diagnosis (n = 30,535). Women who received an antidepressant were 37% less likely to be breastfeeding at discharge than women without a psychiatric diagnosis, but no less likely to be breastfeeding than untreated mothers with a psychiatric diagnosis.[26]

A woman with chronic depression was treated throughout pregnancy with extended-release venlafaxine 225 mg daily. She gave birth by cesarean section at 36.5 weeks and began to breastfeed her infant. The infant was not nursing adequately, but the mother pumped milk after each feeding and used it to supplement the infant. It was estimated that she was producing at least 900 mL of milk daily. By 8 days postpartum, she began to experience depression and aripiprazole 2 mg daily, which she had taken before pregnancy, was added to her regimen. After 3 days of combined therapy, she noticed a decrease in milk supply, and within 21 days, lactation had ceased completely. Either aripiprazole or the combination with venlafaxine possibly caused a decrease in milk supply. [27]

## Alternate Drugs to Consider

Desvenlafaxine, Nortriptyline, Paroxetine, Sertraline

## References

1. Koren G, Moretti M, Kapur B. Can venlafaxine in breast milk attenuate the norepinephrine and serotonin reuptake neonatal withdrawal syndrome. *J Obstet Gynaecol Can.* 2006;28:299–302. PubMed PMID: 16776907.
2. Boucher N, Koren G, Beaulac-Baillargeon L. Maternal use of venlafaxine near term: correlation between neonatal effects and plasma concentrations. *Ther Drug Monit.* 2009;31:404–9. PubMed PMID: 19455083.
3. Weissman AM, Levy BT, Hartz AJ, et al. Pooled analysis of antidepressant levels in lactating mothers, breast milk, and nursing infants. *Am J Psychiatry.* 2004;161:1066–78. PubMed PMID: 15169695.
4. Ilett KF, Hackett LP, Dusci LJ, et al. Distribution and excretion of venlafaxine and O-desmethylvenlafaxine in human milk. *Br J Clin Pharmacol.* 1998;45:459–62. PubMed PMID: 9643618.
5. Ilett KF, Kristensen JH, Hackett LP, et al. Distribution of venlafaxine and its O-desmethyl metabolite in human milk and their effects in breastfed infants. *Br J Clin Pharmacol.* 2002;53:17–22. PubMed PMID: 11849190.
6. Weissman AM, Wisner KL, Perel JM, Bentler S. Venlafaxine levels in lactating mothers, breast milk, and nursing infants. *Arch Women Ment Health.* 2003;6 Suppl 1:20. Abstract.
7. Berle JO, Steen VM, Aamo TO, et al. Breastfeeding during maternal antidepressant treatment with serotonin reuptake inhibitors: infant exposure, clinical symptoms, and cytochrome P450 genotypes. *J Clin Psychiatry.* 2004;65:1228–34. PubMed PMID: 15367050.
8. Misri S, Corral M, Wardrop AA, Kendrick K. Quetiapine augmentation in lactation: a series of case reports. *J Clin Psychopharmacol.* 2006;26:508–11. PubMed PMID: 16974194.
9. Newport DJ, Ritchie JC, Knight BT, et al. Venlafaxine in human breast milk and nursing infant plasma: determination of exposure. *J Clin Psychiatry.* 2009;70:1304–10. PubMed PMID: 19607765.
10. Pogliani L, Baldelli S, Cattaneo D, et al. Selective serotonin reuptake inhibitors passage into human milk of lactating women. *J Matern Fetal Neonatal Med.* 2019;32:3020–25. PubMed PMID: 29557689.
11. Schoretsanitis G, Augustin M, Sassmannshausen H et al. Antidepressants in breast milk; comparative analysis of excretion ratios. *Arch Womens Ment Health.* 2019;23:383-90.. PubMed PMID: 30116895.



12. Hendrick V, Altshuler L, Wertheimer A, et al. Venlafaxine and breast-feeding. *Am J Psychiatry*. 2001;158:2089–90. Letter.. PubMed PMID: 11729040.
13. Hendrick V, Smith LM, Hwang S, et al. Weight gain in breastfed infants of mothers taking antidepressant medications. *J Clin Psychiatry*. 2003;64:410–2. PubMed PMID: 12716242.
14. Pae CU, Kim JJ, Lee CU, et al. Very low dose quetiapine-induced galactorrhea in combination with venlafaxine. *Hum Psychopharmacol*. 2004;19:433–4. PubMed PMID: 15303249.
15. Matthys A, Ambat MT, Pooh R, Plavsic SK. Psychotropic medication use during pregnancy and lactation: Role of ultrasound assessment. *Donald Sch J Ultrasound Obstet Gynecol*. 2014;8:109–21. [10.5005/jp-journals-10009-1345](https://doi.org/10.5005/jp-journals-10009-1345). DOI.
16. Tran MM, Fancourt N, Ging JM et al. Failure to thrive potentially secondary to maternal venlafaxine use. *Australas Psychiatry*. 2016;24:98-9. Letter. PMID: 26850953
17. Bhatia SC, Bhatia SK, Bencomo L. Effective treatment of venlafaxine-induced noncyclical mastalgia with bromocriptine. *J Clin Psychopharmacol*. 2000;20:590–1. Letter.. PubMed PMID: 11001253.
18. Sternbach H. Venlafaxine-induced galactorrhea. *J Clin Psychopharmacol*. 2003;23:109–10. PubMed PMID: 12544389.
19. Ashton AK, Longdon MC. Hyperprolactinemia and galactorrhea induced by serotonin and norepinephrine reuptake inhibiting antidepressants. *Am J Psychiatry*. 2007;164:1121–2. PubMed PMID: 17606668.
20. Wichman CL, Cunningham JL. A case of venlafaxine-induced galactorrhea? *J Clin Psychopharmacol*. 2008;28:580–1. PubMed PMID: 18794664.
21. Karakurt F, Kargili A, Uz B, et al. Venlafaxine-induced gynecomastia in a young patient: a case report. *Clin Neuropharmacol*. 2009;32:51–2. PubMed PMID: 18978497.
22. Berilgen MS. Late-onset galactorrhea and menometrorrhagia with venlafaxine use in a migraine patient. *J Clin Psychopharmacol*. 2010;30:753–4. PubMed PMID: 21057247.
23. Suthar N, Pareek V, Nebhinani N, et al. Galactorrhea with antidepressants: A case series. *Indian J Psychiatry*. 2018;60:145–46. PubMed PMID: 29736080.
24. Warren MB. Venlafaxine-associated euprolactinemic galactorrhea and hypersexuality: A case report and review of the literature. *J Clin Psychopharmacol*. 2016;36:399–400. PubMed PMID: 27219091.
25. Venkatesh KK, Castro VM, Perlis RH, et al. Impact of antidepressant treatment during pregnancy on obstetric outcomes among women previously treated for depression: An observational cohort study. *J Perinatol*. 2017;37:1003–9. PubMed PMID: 28682318.
26. Leggett C, Costi L, Morrison JL, et al. Antidepressant use in late gestation and breastfeeding rates at discharge from hospital. *J Hum Lact*. 2017;33:701–9. PubMed PMID: 28984528.
27. Walker T, Coursey C, Duffus ALJ. Low dose of Abilify (aripiprazole) in combination with Effexor XR (venlafaxine HCl) resulted in cessation of lactation. *Clin Lact*. 2019;10:56–9. [10.1891/2158-0782.10.2.56](https://doi.org/10.1891/2158-0782.10.2.56). DOI.

## Substance Identification

### Substance Name

Venlafaxine

### CAS Registry Number

93413-69-5

### Drug Class

Breast Feeding

Lactation

## Antidepressive Agents

### Antidepressive Agents, Second-Generation